

**FEDERAL INDUSTRIES**

A Standex Company

215 Federal Avenue
Belleville, WI 53508-9201

Phone: 800-356-4206

Fax: 608-424-3234

Email: geninfo@federalind.comWebsite: www.federalind.com*The Signature of Quality*

Project Name: _____

Item #: _____

Model #: _____ Qty: _____

Approval: _____

AIA#

SIS#

SIGNATURE SERIES REFRIGERATED COUNTERTOP MERCHANDISER - Bottom Mount

The Signature Series counter top merchandiser combines attractive curved glass styling and merchandising flexibility. Designed for continuous case line-ups.

MODEL	DIMENSIONS (Includes End Panels)
<input type="checkbox"/> CRB3628	36 x 29.7 x 25.12 (in) 914 x 754 x 638 (mm)
<input type="checkbox"/> CRB4828	48 x 29.7 x 25.12 (in) 1219 x 754 x 638 (mm)

**STANDARD FEATURES****Model Features**

- Curved glass styling.
- Tempered thermopane front glass. Acrylic end panels.
- Removable sliding rear doors, shelf lights, shelf supports, and shelves.
- Removable, scratch-resistant, rustproof black display deck.
- Easily accessible light switch and adjustable temperature control.
- Average case temperature of 38° F to 40° F is maintained.
- Black painted metal and stainless construction. Black trim.
- Designed for continuous line-ups.
- Cord and plug (NEMA 5-15P).
- Installation Flexibility
- Recessed 3" in the counter with condensing component mounted underneath (CRB Models).

Refrigeration

- Condensate evaporator provided for a totally selfcontained system.
- Oversized coil and low-velocity fan system maintains high humidity and product freshness.
- Average case temperature of 38° F (3.3° C) to 40° F (4.4° C) is maintained.
- Thermometer.
- R290 Refrigerant

Shelving

- Adjustable black wire shelves. Shelves are adjustable up and down and can also be tilted in two positions. Two tiers.

Lighting

- 3500K LED top light and shelf lights.

Agency Approvals

- UL Safety and UL Sanitation Listed.
- DOE 2017 Compliant

OPTIONAL ACCESSORIES

- | | |
|--|--|
| <input type="checkbox"/> Glass Shelves | <input type="checkbox"/> Reflective Rear Doors |
| <input type="checkbox"/> Reflective Ends | <input type="checkbox"/> Chocolate Package |
| <input type="checkbox"/> Remote Refrigeration on CRB models only | |



WARRANTY*
One year Parts and Labor
2nd thru 5th year part
only service compressor
(U.S.A and Canada)

Note: Information is subject to change at any time.
Visit www.federalind.com for the most current specs.

Revised 8/10/2025

AIA#

SIGNATURE SERIES REFRIGERATED COUNTERTOP MERCHANDISER

SIS#

- Bottom Mount**Product Specifications**

Intended Environment: Type I - Designed to operate in maximum ambient conditions of 75°F (24°C) and 55% relative humidity unless noted otherwise in system information below.

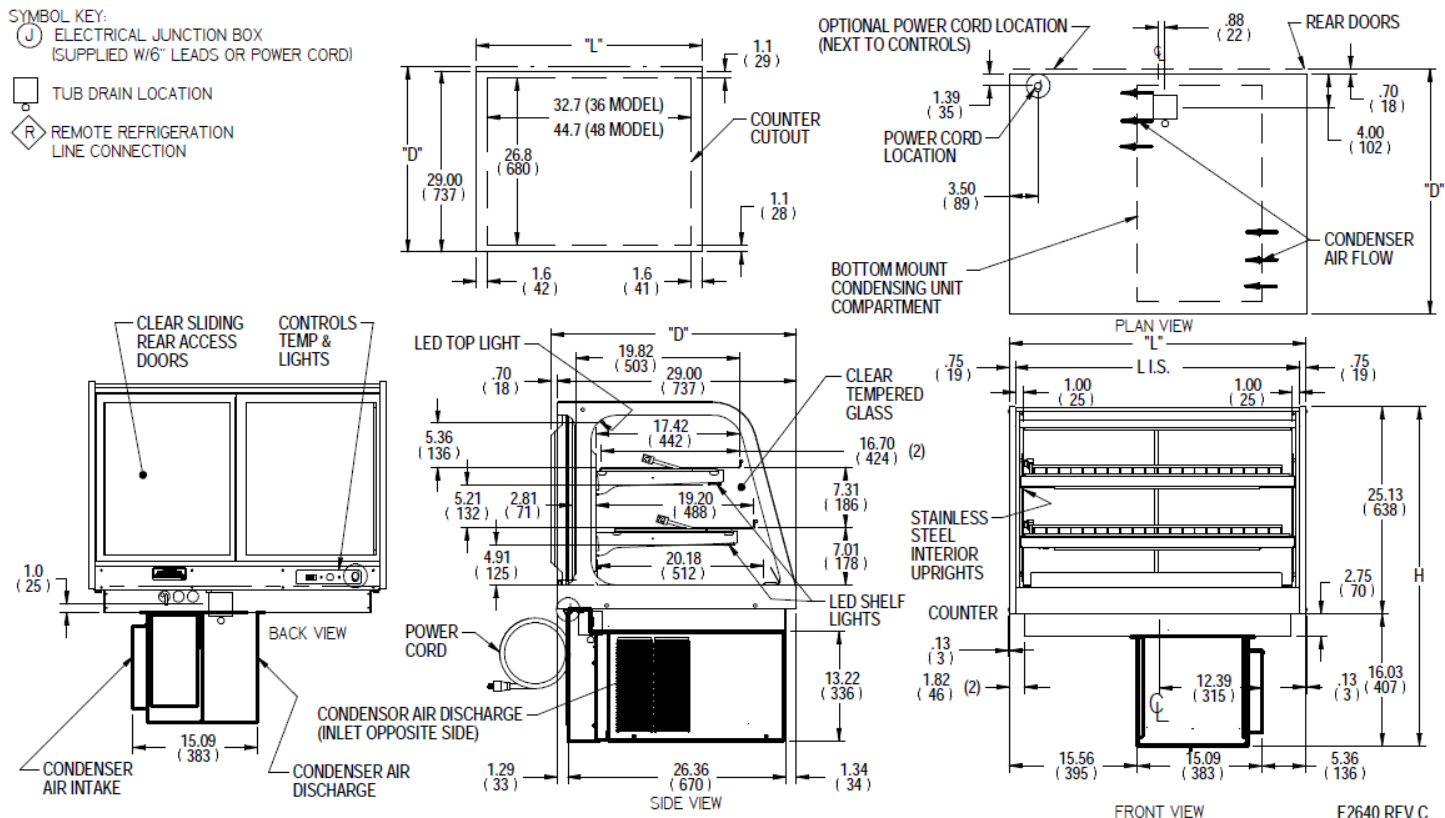
Zone	Intended Product To Be Displayed	Avg Prod Temp °F/°C
All	Packaged Refrigerated Products	38°F / (3.3°C)

DIMENSION: xx"/(mm)

DIMENSION TOLERANCE +/- 0.19 (4.8)

SYMBOL KEY:

- Ⓢ ELECTRICAL JUNCTION BOX
(SUPPLIED W/6" LEADS OR POWER CORD)
- TUB DRAIN LOCATION
- ◇ REMOTE REFRIGERATION
LINE CONNECTION



E2640 REV C

										SELF CONTAINED					
MODEL	DIMENSION				SHELVING				INTERIOR VOLUME CU FT	ELECTRICAL			REFRIGERANT	CONDENSATE REMOVAL	SHIP
	L	D	H	LS	# OF TIERS	CAPACITY (BAKERY PANS)	D	L		2-WIRE + GROUND 120/60/1					WEIGHT
	in	in	in	in			in	in		AMPS	MAX FUSE SIZE	STANDARD NEMA CORD & PLUG			LBS
	mm	mm	mm	mm			mm	mm							KILO
CRB3628	36.0	29.7	41.2	34.5	2	3 (18"X26")	16.7	32.7	9.25	6	15	NEMA 5-15p	R290a	CONDENSATE EVAPORATOR	390 LBS
	914	754	1046	876			424	831							177 KILO
CRB4828	48.0	29.7	41.2	46.5	2	(3)18"X26" & (3)18X12	16.7	44.7	12.50	6	15	NEMA 5-15p	R290a	CONDENSATE EVAPORATOR	450 LBS
	1219	754	1046	1181			424	1136							204 KILO
CRB3628C	36.0	29.7	41.2	34.5	2	3 (18"X26")	16.7	32.7	9.25	6	15	NEMA 5-15p	R290a	CONDENSATE EVAPORATOR	390 LBS
	914	754	1046	876			424	831							177 KILO
CRB4828C	48.0	29.7	41.2	46.5	2	(3)18"X26" & (3)18X12	16.7	44.7	12.50	6	15	NEMA 5-15p	R290a	CONDENSATE EVAPORATOR	450 LBS
	1219	754	1046	1181			424	1136							204 KILO

* Height above counter

- If a GFCI circuit is required, a GFCI Breaker Must be used instead of GFCI receptacle.
- Refrigerated cases are designed to operate in a maximum of 75°F (24°C) ambient and 55% relative humidity.
- Due to continuing engineering improvements, specifications are subject to change without notice.



The Signature of Quality®

FEDERAL INDUSTRIES

A Standex Company

215 Federal Avenue, Belleville, Wisconsin 53508-9201

Phone: 800-356-4206

Fax: 608-424-3234

Email: Geninfo@Federalind.com

Website: Federalind.com