



The Signature of Quality

FEDERAL INDUSTRIES

A Standex Company

215 Federal Avenue
Belleville, WI 53508-9201

Phone: 800-356-4206

Fax: 608-424-3234

Email: geninfo@federalind.com

Website: www.federalind.com

Project Name: _____

Item #: _____

Model #: _____ Qty: _____

Approval: _____

AIA#

SIS#

SIGNATURE SERIES REFRIGERATED COUNTER TOP MERCHANDISER -Rear Mount

The Signature Series Countertop merchandiser combines attractive curved glass styling and merchandising flexibility. Designed for continuous case line-ups.



Shown As Lineup



Rear Mount

OPTIONAL ACCESSORIES

- ☐ Glass Shelves
- ☐ Reflective Rear Doors
- ☐ Reflective Ends
- ☐ Chocolate Package

MODEL

DIMENSIONS

(Includes End Panels)

<input type="checkbox"/> CRR3628	36 x 29.7 x 27.83 (in) 914 x 754 x 707 (mm)
<input type="checkbox"/> CRR4828	48 x 29.7 x 27.83 (in) 1219 x 754 x 707 (mm)

STANDARD FEATURES

Model Features

- Curved glass styling.
- Tempered thermopane front glass. Acrylic end panels.
- Removable sliding rear doors, shelf lights, shelf supports, and shelves.
- Removable, scratch-resistant, rustproof black display deck.
- Easily accessible light switch and adjustable temperature control.
- Average case temperature of 38° F to 40° F is maintained.
- Black painted metal and stainless construction. Black trim.
- Designed for continuous line-ups.
- Cord and plug (NEMA 5-15P).
- Installation Flexibility
- Set directly on counter with condensing component mounted on rear (CRR Models).

Refrigeration

- Condensate evaporator provided for a totally self-contained system.
- Oversized coil and low-velocity fan system maintains high humidity and product freshness.
- Average case temperature of 38° F (3.3° C) to 40° F (4.4° C) is maintained.
- Thermometer.
- R290 Refrigerant

Shelving

- Adjustable black wire shelves. Shelves are adjustable up and down and can also be tilted in two positions. Two tiers.

Lighting

- 3500K LED top light and shelf lights.

Agency Approvals

- UL Safety and UL Sanitation Listed.
- DOE 2017 Compliant



WARRANTY*
One year Parts and Labor
2nd thru 5th year part
only service compressor
(U.S.A and Canada)

Note: Information is subject to change at any time.
Visit www.federalind.com for the most current specs.

Revised 8/10/2025

AIA#

SIGNATURE SERIES REFRIGERATED COUNTER TOP MERCHANDISER**- Rear Mount**

SIS#

Product Specifications

Intended Environment: Type I - Designed to operate in maximum ambient conditions of 75°F (24°C) and 55% relative humidity unless noted otherwise in system information below.

Zone	Intended Product To Be Displayed	Avg Prod Temp °F/°C
All	Packaged Refrigerated Products	38°F / (3.3°C)

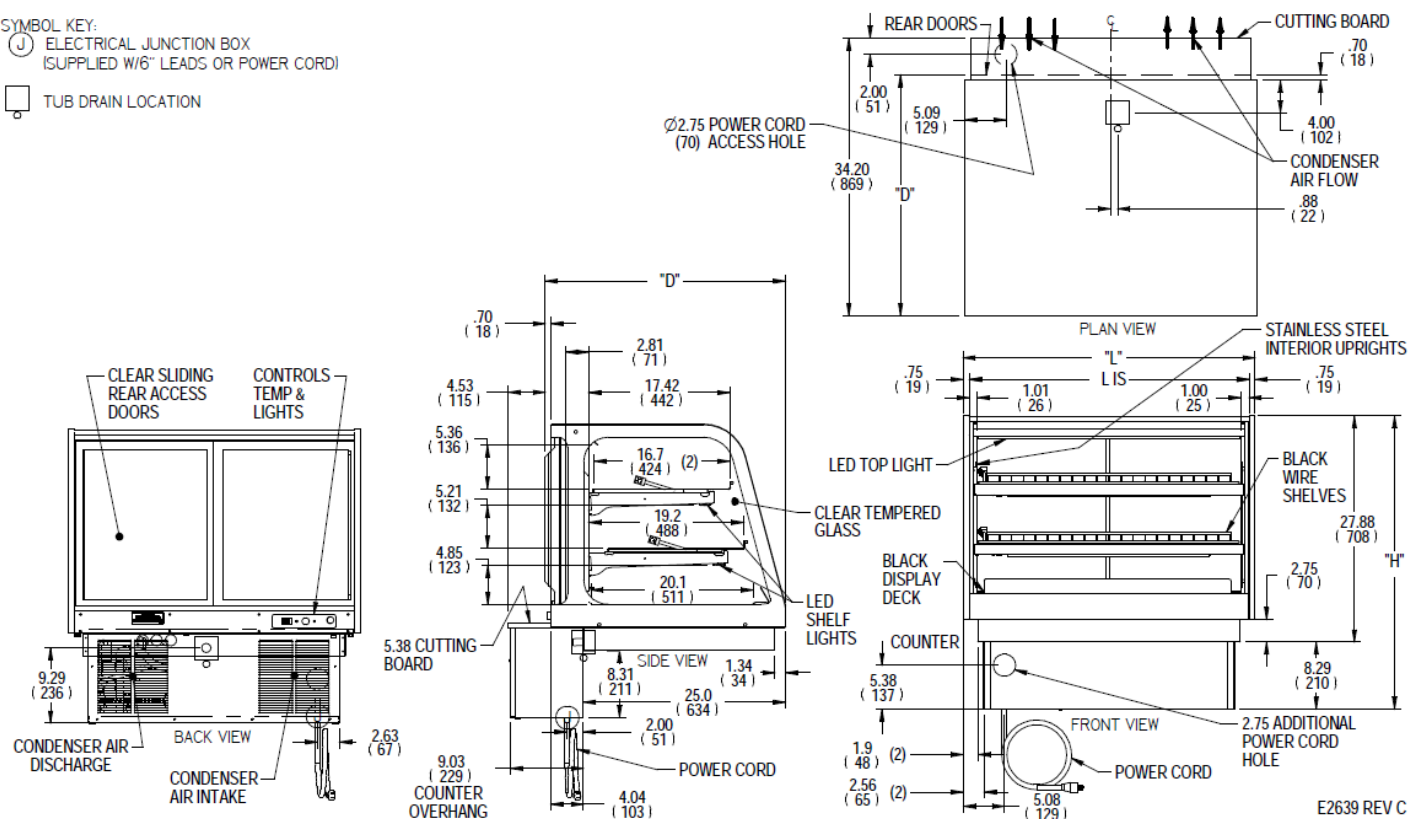
DIMENSION: xx"/(mm)

DIMENSION TOLERANCE +/- 0.19 (4.8)

SYMBOL KEY:

Ⓜ ELECTRICAL JUNCTION BOX
(SUPPLIED W/6" LEADS OR POWER CORD)

□ TUB DRAIN LOCATION



E2639 REV C

									SELF CONTAINED							
MODEL	DIMENSION				SHELVING				INTERIOR VOLUME CU FT	ELECTRICAL			REFRIGERANT	CONDENSATE REMOVAL	SHIP	
	L	D	H	LIS	# OF TIERS	CAPACITY (BAKERY PANS)	D	L		2-WIRE + GROUND 120/60/1		WEIGHT				
	in	in	in	in			in	in		AMPS	MAX FUSE SIZE				STANDARD NEMA CORD & PLUG	LBS
	mm	mm	mm	mm			mm	mm								
CRR3628	36.0	29.7	36.2	34.5	2	3 (18"X26")	17	32.2	9.25	6	15	NEMA 5-15P	R290a	CONDENSATE EVAPORATOR	390 LBS	
	914	754	919	876			424	818							177 KILO	
CRR4828	48.0	29.7	36.2	46.5	2	(3)18"X26" & (3)18X12	17	44.2	12.50	6	15	NEMA 5-15P	R290a	CONDENSATE EVAPORATOR	450 LBS	
	1219	754	919	1181			424	1123							204 KILO	
CRR3628C	36.0	29.7	36.2	34.5	2	3 (18"X26")	17	32.2	9.25	6	15	NEMA 5-15P	R290a	CONDENSATE EVAPORATOR	390 LBS	
	914	754	919	876			424	818							177 KILO	
CRR4828C	48.0	29.7	36.2	46.5	2	(3)18"X26" & (3)18X12	17	44.2	12.50	6	15	NEMA 5-15P	R290a	CONDENSATE EVAPORATOR	450 LBS	
	1219	754	919	1181			424	1123							204 KILO	

* Height above counter

- If a GFCI circuit is required, a GFCI Breaker Must be used instead of GFCI receptacle.
- Refrigerated cases are designed to operate in a maximum of 75°F (24°C) ambient and 55% relative humidity.
- Due to continuing engineering improvements, specifications are subject to change without notice.



The Signature of Quality®

FEDERAL INDUSTRIES

A Standex Company

215 Federal Avenue, Belleville, Wisconsin 53508-9201

Phone: 800-356-4206

Fax: 608-424-3234

Email: Geninfo@Federalind.com

Website: Federalind.com