



*The Signature of Quality*

## FEDERAL INDUSTRIES

A Standex Company

215 Federal Avenue  
Belleville, WI 53508-9201

Phone: 800-356-4206

Fax: 608-424-3234

Email: [geninfo@federalind.com](mailto:geninfo@federalind.com)

Website: [www.federalind.com](http://www.federalind.com)

Project Name: \_\_\_\_\_

Item #: \_\_\_\_\_

Model #: \_\_\_\_\_ Qty: \_\_\_\_\_

Approval: \_\_\_\_\_

AIA#

SIS#

# COUNTERTOP REFRIGERATED SELF-SERVE MERCHANDISER - REAR MOUNT

The Signature Series Countertop merchandiser combines attractive curved glass styling and merchandising flexibility. Designed for continuous case line-ups.



MODEL	DIMENSIONS ( Includes End Panels )
<input type="checkbox"/> CRR3628SS	36 x 29.7 x 37.7 (in) 914 x 754 x 958 (mm)
<input type="checkbox"/> CRR4828SS	48 x 29.7 x 37.7 (in) 1219 x 754 x 958 (mm)

## STANDARD FEATURES

### Model Features

- Curved glass styling.
- Adjustable black metal shelf. Adjustable up and down and can also be tilted in two positions.
- Tempered front glass with self-serve cut out for customer access. Acrylic end panels.
- Removable sliding rear doors, shelf light, shelf supports, and shelf.
- Removable, scratch-resistant, rustproof black display deck.
- Easily accessible light switch and adjustable temperature control.
- Black painted metal and stainless construction. Black trim.
- Designed for continuous line-ups.
- Cord and plug (NEMA 5-15P).
- Installation Flexibility
- Set directly on counter with condensing component mounted on rear (CRR Models).

### Refrigeration

- Average case temperature of 38° F (3.3° C) to 40° F (4.4° C) is maintained.
- Thermometer.
- R290 Refrigerant

### Shelving

- Adjustable black metal shelf. Adjustable up and down and can also be tilted in two positions.

### Lighting

- 3500K LED top light and shelf lights.

### Agency Approvals

- UL Safety and UL Sanitation Listed
- DOE 2017 Compliant



## OPTIONAL ACCESSORIES

- |  |   |
|--|---|
| <input type="checkbox"/> Glass Shelves         | <input type="checkbox"/> Remote Refrigeration (EEV Included) on CRB Models Only |
| <input type="checkbox"/> Reflective Ends       | <input type="checkbox"/> LED Lighting   |
| <input type="checkbox"/> Reflective Rear Doors |   |



**WARRANTY\***  
One year Parts and Labor  
2nd thru 5th year part  
only service compressor  
(U.S.A and Canada)

Note: Information is subject to change at any time.  
Visit [www.federalind.com](http://www.federalind.com) for the most current specs.

Revised 8/18/2025

## COUNTERTOP REFRIGERATED SELF-SERVE MERCHANDISER - REAR MOUNT

SIS#

## Product Specifications

Intended Environment: Type I - Designed to operate in maximum ambient conditions of 75°F (24°C) and 55% relative humidity unless noted otherwise in system information below.

Zone	Intended Product To Be Displayed	Avg Prod Temp °F/°C
All	Packaged Refrigerated Products	38°F / (3.3°C)

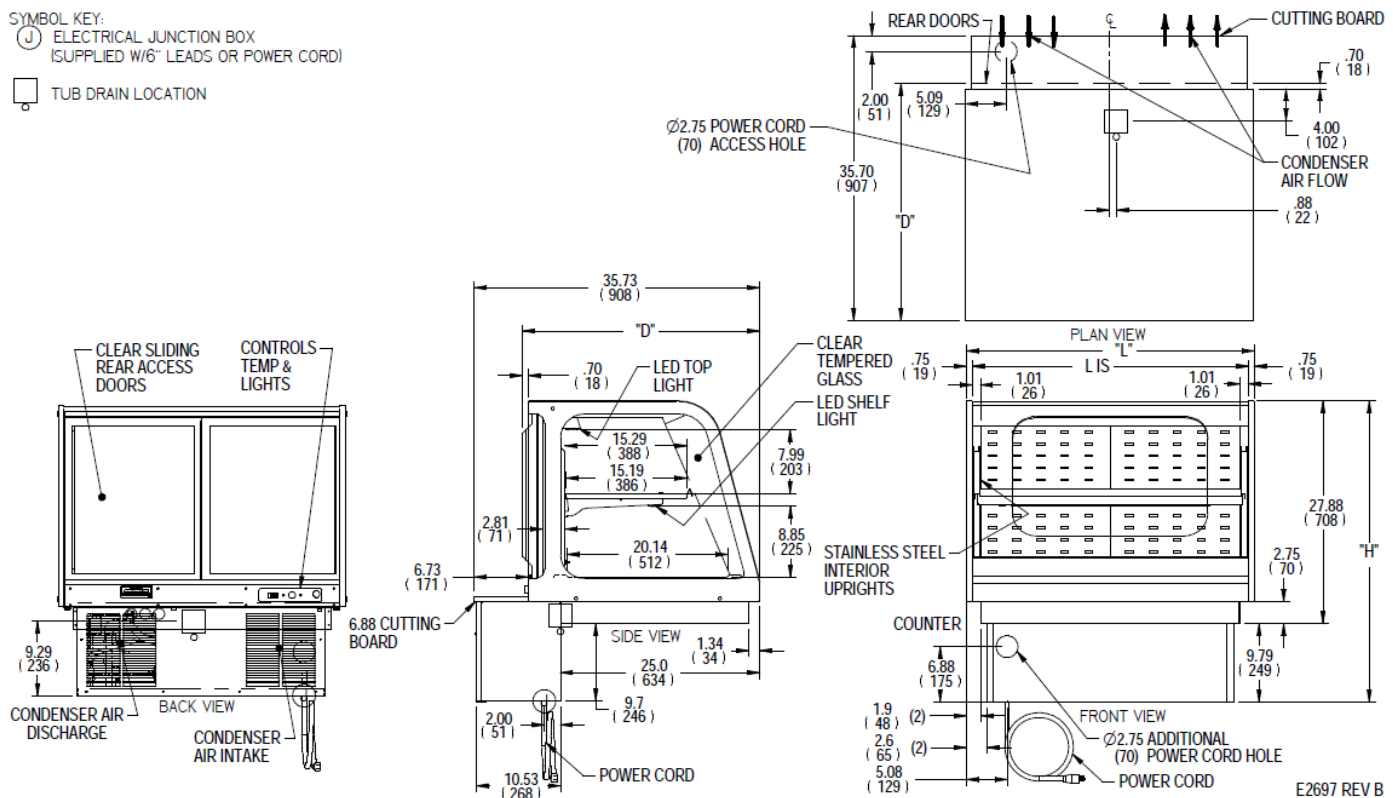
**DIMENSION: xx"/(mm)**

**DIMENSION TOLERANCE +/- 0.19 (4.8)**

SYMBOL KEY:

(J) ELECTRICAL JUNCTION BOX  
(SUPPLIED W/6" LEADS OR POWER CORD)

☐ TUB DRAIN LOCATION



									SELF CONTAINED					
MODEL	DIMENSION				SHELVING			INTERIOR VOLUME CU FT	ELECTRICAL			REFRIGERANT	CONDENSATE REMOVAL	SHIP
	L	D	H	LS	# OF TIERS	D	L		2-WIRE + GROUND 120/60/1					WEIGHT
	in	in	in	in		in	in		AMPS	MAX FUSE SIZE	STANDARD NEMA CORD & PLUG			LBS
	mm	mm	mm	mm		mm	mm							KILO
CRR3628SS	36.0	29.7	37.7	34.5	1	15.2	32.7	6.57	6	15	NEMA 5-15P	R290a	CONDENSATE EVAPORATOR	400 LBS
	914	754	958	876		386	831							181 KILO
CRR4828SS	48.0	29.7	37.7	46.5	1	15.2	44.7	8.85	6	15	NEMA 5-15P	R290a	CONDENSATE EVAPORATOR	460 LBS
	1219	754	958	1181		386	1136							209 KILO

\* Height above counter

- If a GFCI circuit is required, a GFCI Breaker Must be used instead of GFCI receptacle.
- Refrigerated cases are designed to operate in a maximum of 75°F (24°C) ambient and 55% relative humidity.
- Due to continuing engineering improvements, specifications are subject to change without notice.



*The Signature of Quality.*

**FEDERAL INDUSTRIES**

A Standex Company

215 Federal Avenue, Belleville, Wisconsin 53508-9201

**Phone:** 800-356-4206

**Fax:** 608-424-3234

**Email:** [Geninfo@Federalind.com](mailto:Geninfo@Federalind.com)

**Website:** [Federalind.com](http://Federalind.com)