



The Signature of Quality®

FEDERAL INDUSTRIES

A Standex Company

215 Federal Avenue
Belleville, WI 53508-9201

Phone: 800-356-4206

Fax: 608-424-3234

Email: geninfo@federalind.com

Website: www.federalind.com

Project Name: _____

Item #: _____

Model #: _____ Qty: _____

Approval: _____

AIA#

SIS#

CURVED GLASS REFRIGERATED DELI CASE

Sleek curved-glass styling blends with traditional design elements to maximize performance. Designed for continuous case line-ups without middle end glass.



MODEL

DIMENSIONS

(Includes End Panels)

<input type="checkbox"/> CGR3648CD	36.13 x 35.31 x 48 (in) 918 x 897 x 1219 (mm)
<input type="checkbox"/> CGR5048CD	50.13 x 35.4 x 48 (in) 1273 x 899 x 1219 (mm)
<input type="checkbox"/> CGR5948CD	59.13 x 35.4 x 48 (in) 1502 x 899 x 1219 (mm)
<input type="checkbox"/> CGR7748CD	77.13 x 35.4 x 48 (in) 1959 x 899 x 1219 (mm)

STANDARD FEATURES

Model Features

- Curved glass styling.
- Removable rear wrapping board.
- Tempered thermopane tilt-out front glass for easy cleaning.
- Tempered thermopane glass ends and doors.
- Removable sliding rear doors, shelf light, shelf supports, and shelf.
- Steel base construction with a choice of six standard laminates on base. Other finishes optional.
- Condenser air filter on self-contained units.
- Thermometer.
- Removable, scratch-resistant, rustproof white display deck
- Easily accessible light switch and adjustable temperature control.
- Rear access of the refrigeration system for quick and easy service.
- Black trim.
- Designed for continuous line-ups.
- Adjustable Leg Levelers

Refrigeration

- Condensate evaporator provided for a totally self-contained system.
- Oversized coil and low-velocity fan system maintains high humidity and product freshness.
- Easy clean, rustproof insulated evaporator coil compartment.
- Average case temperature of 36° to 38° is maintained.
- R290 Refrigerant (R449a in Remote Applications)

Shelving

- Adjustable full-length stainless steel lighted mezzanine shelf. Shelf is adjustable up and down and can also be tilted in three positions.

Lighting

- 3000K LED top light and shelf lights.
- DLC Certified, IP66 rated

Agency Approvals

- UL Safety and UL Sanitation listed
- DOE 2017 Compliant

OPTIONAL ACCESSORIES

- | | |
|--|--|
| <input type="checkbox"/> Special Base Finish | <input type="checkbox"/> Reflective Rear Doors |
| <input type="checkbox"/> Additional Mezzanine Shelf | <input type="checkbox"/> Legs |
| <input type="checkbox"/> Cord & Plug | <input type="checkbox"/> Top Cutting Board, White |
| <input type="checkbox"/> Remote Refrigeration (EEV Included) | <input type="checkbox"/> Package Shelf |
| <input type="checkbox"/> Reflective Ends | <input type="checkbox"/> LED Light Below Package Shelf |
| <input type="checkbox"/> White or Mirrored Interior Ends With Laminated Exterior | <input type="checkbox"/> Front Glass and Rear Door Locks |
| <input type="checkbox"/> Casters (Self-Contained Models Only) Cord & Plug Included | <input type="checkbox"/> Joining Kit for Continuous Line-ups |
| | <input type="checkbox"/> Scale Stand |
| | <input type="checkbox"/> Step Riser or Pan Holder |
| | <input type="checkbox"/> Glass Mezzanine Shelf |
| | <input type="checkbox"/> Additional Mezzanine Shelf |



WARRANTY*
One year Parts and Labor
2nd thru 5th year part
only service compressor
(U.S.A and Canada)

Note: Information is subject to change at any time.
Visit www.federalind.com for the most current specs.

Revised 8/4/2025

AIA#

CURVED GLASS REFRIGERATED DELI CASE

SIS#

Product Specifications

Intended Environment: Type I - Designed to operate in maximum ambient conditions of 75°F (24°C) and 55% relative humidity unless noted otherwise in system information below.

Zone	Intended Product To Be Displayed	Avg Prod Temp °F/°C
All	Packaged Refrigerated Products	38°F / (3.3°C)

DIMENSION: xx"/(mm)

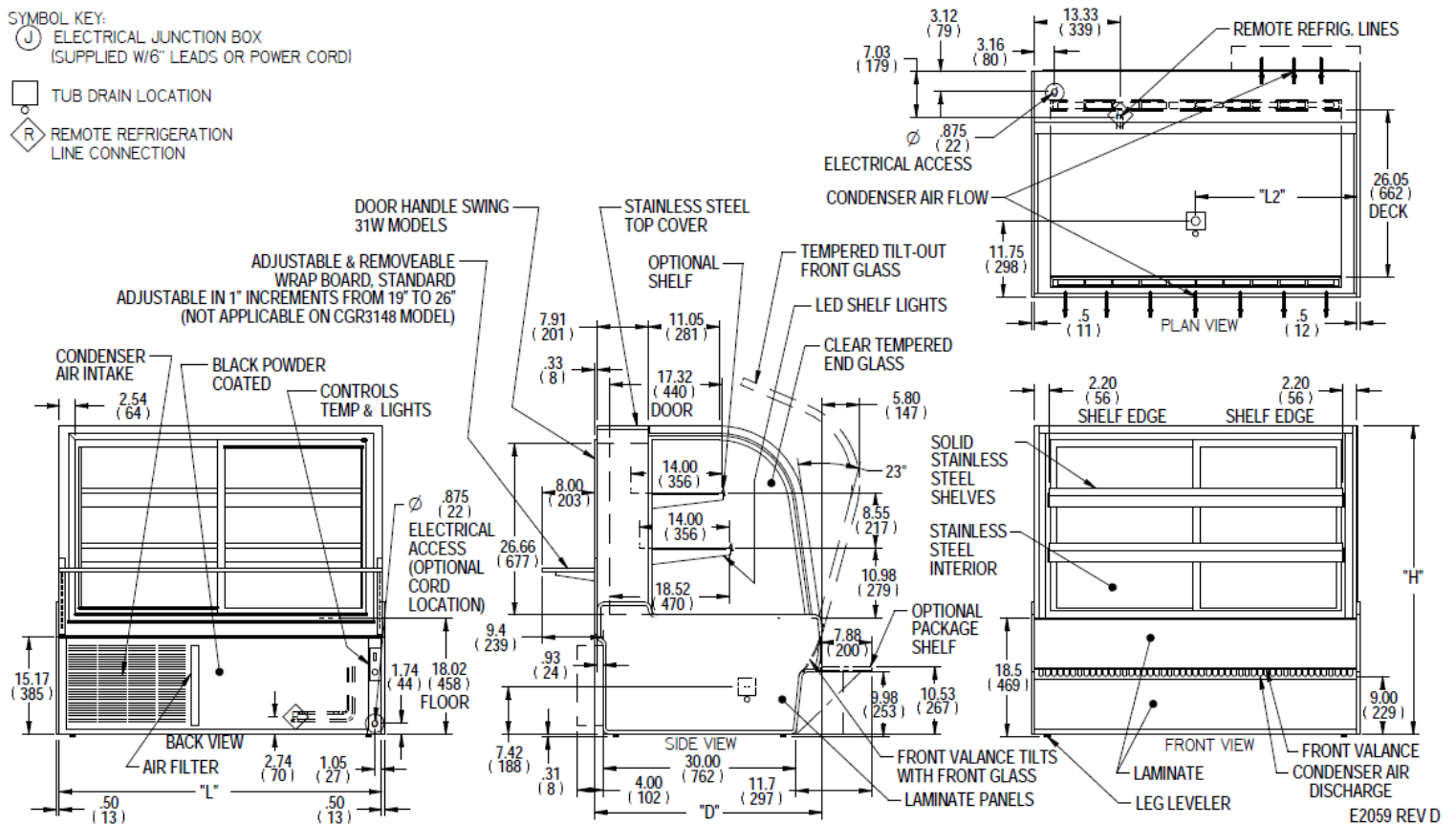
DIMENSION TOLERANCE +/- 0.25 (6.4)

SYMBOL KEY:

Ⓝ ELECTRICAL JUNCTION BOX
(SUPPLIED W/6" LEADS OR POWER CORD)

□ TUB DRAIN LOCATION

Ⓡ REMOTE REFRIGERATION
LINE CONNECTION



E2059 REV D

MODEL	DIMENSION				TUB DRAIN	SHELVING		INTERIOR VOLUME CU FT	SELF CONTAINED						REMOTE						
	L	D	H	L2		# OF TIERS	D		L	PERMANENT CONNECT		REFRIGERANT	CONDENSATE REMOVAL	SHIP WEIGHT	OPTIONAL NEMA CORD & PLUG	PERMANENT CONNECT		REFRIGERANT	BTU'S @+20°	CONDENSATE REMOVAL	SHIP WEIGHT
										2-WIRE + GROUND						2-WIRE + GROUND					
										120/60/1						120/60/2					
										AMPS	MAX FUSE SIZE					AMPS	MAX FUSE SIZE				
mm	mm	mm	mm	mm	mm	mm	AMPS	MAX FUSE SIZE	AMPS	MAX FUSE SIZE	KILO	120/60/1	AMPS	MAX FUSE SIZE	KILO						
CGR3148CD	31.13	35.31	48	5.28	1	14	27.1	13.79	8.00	15A	R290	CONDENSATE PAN	500 LBS	NEMA5-15P	3.00	15A	R449a	2800	CONDENSATE PAN	460 LBS	
	791	897	1219	134.11		356	688					227 KILO							209 KILO		
CGR3648CD	36.13	35.4	48	5.28	1	14	32.1	16.13	12.00	15A	R290	CONDENSATE PAN	510 LBS	NEMA5-15P	3.00	15A	R449a	2800	CONDENSATE PAN	470 LBS	
	918	899	1219	134.11		356	815					231 KILO							213 KILO		
CGR5048CD	50.13	35.4	48	25.05	1	14	46.1	22.69	12.00	15A	R290	CONDENSATE PAN	640 LBS	NEMA5-15P	3.00	15A	R449a	4300	CONDENSATE PAN	580 LBS	
	1273	899	1219	636.27		356	1171					290 KILO							263 KILO		
CGR5948CD	59.13	35.4	48	29.55	1	14	55.1	26.90	12.00	15A	R290	CONDENSATE PAN	765 LBS	NEMA5-15P	4.00	15A	R449a	4500	CONDENSATE PAN	720 LBS	
	1502	899	1219	750.57		356	1400					347 KILO							327 KILO		
CGR7748CD	77.13	35.4	48	38.55	1	14	73.16	35.33	16.00	20A	R290	CONDENSATE PAN	930 LBS	NEMA 5-20P	5.00	15A	R449a	6900	CONDENSATE PAN	885 LBS	
	1959	899	1219	979.17		356	1858					422 KILO							401 KILO		

- If a GFCI circuit is required, a GFCI Breaker MUST be used instead of GFCI receptacle.
- Refrigerated cases are designed to operate in a maximum of 75°F (24°C) ambient and 55% relative humidity.
- Due to continuing engineering improvements, specifications are subject to change without notice.

DOE 2017
Energy Efficiency
Compliant



The Signature of Quality®

FEDERAL INDUSTRIES

A Standex Company

215 Federal Avenue Belleville, Wisconsin 53508-9201

Phone: 800-356-4206

Fax: 608-424-3234

Email: Geninfo@Federalind.com

Website: Federalind.com