



The Signature of Quality®

**FEDERAL INDUSTRIES**

A Standex Company  
215 Federal Avenue  
Belleville, WI 53508-9201

Phone: 800-356-4206  
Fax: 608-424-3234  
Email: geninfo@federalind.com  
Website: www.federalind.com

Project Name: \_\_\_\_\_

Item #: \_\_\_\_\_

Model #: \_\_\_\_\_ Qty: \_\_\_\_\_

Approval: \_\_\_\_\_

AIA#

SIS#

## CURVED GLASS HORIZONTAL DUAL ZONE CASE

Sleek curved-glass styling blends with traditional design elements to maximize performance.

MODEL	IDE/E (Includes End Panels)
<input type="checkbox"/> CGR3660DZH	36.13 x 35.31 x 60 (in) 918 x 897 x 1524 (mm)
<input type="checkbox"/> CGR5060DZH	50.13 x 35.31 x 60 (in) 1273 x 897 x 1524 (mm)
<input type="checkbox"/> CGR5960DZH	59.13 x 35.31 x 60 (in) 1502 x 897 x 1524 (mm)
<input type="checkbox"/> CGR7760DZH	77.13 x 35.31 x 60 (in) 1959 x 897 x 1524 (mm)

### STANDARD FEATURES

#### Model Features

- Curved glass styling.
- Bottom section refrigerated, top section non-refrigerated.
- Removable sliding rear doors, shelf lights, shelf supports, and shelves.
- Steel base construction with a choice of six standard laminates on base. Other finishes optional.
- Black trim.
- White scratch-resistant display decks.
- Adjustable Leg Levelers

#### Added Features for Refrigerated Side

- Condenser air filter on self-contained units.
- Thermometer.
- Condensate evaporator provided for a totally self-contained system.
- Oversized coil and low-velocity fan system maintains high humidity and product freshness.
- Easy clean, rustproof insulated evaporator coil compartment.
- Adjustable temperature control.
- Average case temperature of 38° to 40° is maintained.
- Rear access of the refrigeration system for quick and easy service.
- R513a Refrigerant.

#### Shelving

- Adjustable white wire shelves. Shelves are adjustable up and down and can also be tilted in two positions.

#### Lighting

- 3000K LED top light and shelf lights.
- DLC Certified, IP66 rated

#### Agency Approvals

- UL Safety and UL Sanitation listed
- DOE 2017 Compliant



### OPTIONAL ACCESSORIES

- |  |  |
|--|--|
| <input type="checkbox"/> Special Base Finish                   | <input type="checkbox"/> White or Mirrored Interior                                |
| <input type="checkbox"/> Glass Shelves                         | <input type="checkbox"/> Ends With Laminated Exterior                              |
| <input type="checkbox"/> Rear Wrapping Board                   | <input type="checkbox"/> Reflective Rear Doors                                     |
| <input type="checkbox"/> Cord & Plug                           | <input type="checkbox"/> Casters/Cord & Plug Included (Self-Contained Models Only) |
| <input type="checkbox"/> Remote Condensing Unit (EEV Included) | <input type="checkbox"/> Legs  |
| <input type="checkbox"/> Black, Gold, or Chrome Wire Shelves   | <input type="checkbox"/> Package Shelf   |
| <input type="checkbox"/> Reflective Ends                       | <input type="checkbox"/> LED Light Below Package Shelf                             |



**WARRANTY\***  
One year Parts and Labor  
2nd thru 5th year part  
only service compressor  
(U.S.A and Canada)

Note: Information is subject to change at any time.  
Visit [www.federalind.com](http://www.federalind.com) for the most current specs.

AIA#

# CURVED GLASS HORIZONTAL DUAL ZONE CASE

SIS#

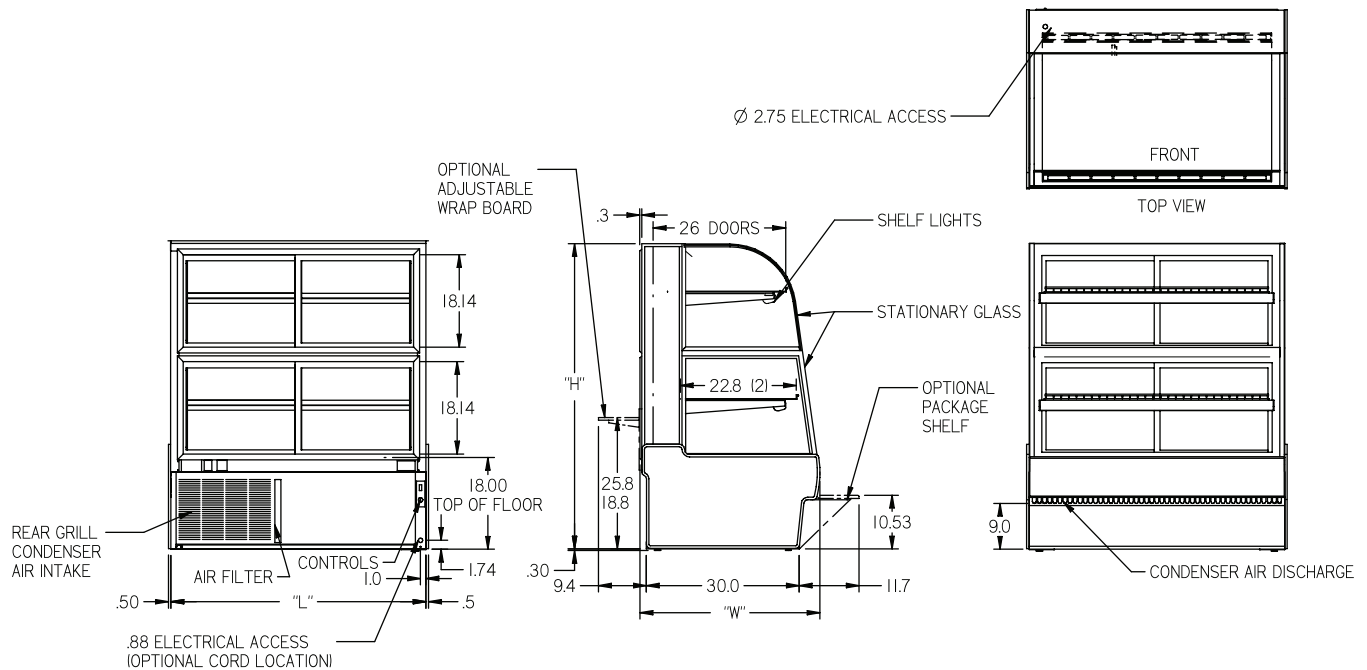
## Product Specifications

Intended Environment: Type I - Designed to operate in maximum ambient conditions of 75°F (24°C) and 55% relative humidity unless noted otherwise in system information below.

Zone	Intended Product To Be Displayed	Avg Prod Temp °F/°C
All	Packaged Refrigerated Products	38°F / (3.3°C)

DIMENSION: xx"/(mm)

DIMENSION TOLERANCE +/- 0.25 (6.4)



MODEL	DIMENSIONS				SELF-CONTAINED Permanently Connected	REMOTE 120/60/1	NEMA PLUG
	L	D	H1	UNITS			
CGR3660DZH	36.13	35.31	60	in.	1/3 HP - 8.0 AMPS	2.3 AMPS	NEMA 5-15P
	918	897	1524	mm.			
CGR5060DZH	50.13	35.31	60	in.	1/2 HP - 10.5 AMPS	2.3 AMPS	NEMA 5-15P
	1273	897	1524	mm.			
CGR5960DZH	59.13	35.31	60	in.	1/2 HP - 12.0 AMPS	2.5 AMPS	NEMA 5-15P
	1502	897	1524	mm.			
CGR7760DZH	77.13	35.31	60	in.	3/4 HP - 15.4 AMPS	3.3 AMPS	NEMA 5-20P
	1959	897	1524	mm.			

- If a GFCI circuit is required, a GFCI Breaker MUST be used instead of GFCI receptacle.
- Refrigerated cases are designed to operate in a maximum of 75°F (24°C) ambient and 55% relative humidity.
- Due to continuing engineering improvements, specifications are subject to change without notice.



The Signature of Quality®

**FEDERAL INDUSTRIES**

A Standex Company

215 Federal Avenue, Belleville, Wisconsin 53508-9201

Phone: 800-356-4206

Fax: 608-424-3234

Email: [Geninfo@Federalind.com](mailto:Geninfo@Federalind.com)

Website: [Federalind.com](http://Federalind.com)