



The Signature of Quality

FEDERAL INDUSTRIES

A Standex Company

215 Federal Avenue
Belleville, Wisconsin 53508-9201

Phone: 800-356-4206

Fax: 608-424-3234

Email: Geninfo@Federalind.com

Website: Federalind.com

Project Name: _____

Item #: _____

Model #: _____ Qty: _____

Approval: _____

AIA #

SIS #

ELEMENTS™ REFRIGERATED SELF-SERVE ISLAND MERCHANDISER

Designed with impulse sales in mind. Get maximum return and increased profits with shop-around merchandising.



Model EIMSS84SC-3 Shown
*Black Exterior Finish Only

OPTIONAL ACCESSORIES

- ☐ High Capacity Condensate Evaporator Assembly (Field Installed)
 - Requires the removal of the standard Evaporator Assembly shipped with unit, and a separate 208-240V / 20 amp circuit.
- ☐ Field Installed Caster Kit Shipped Separately

MODEL

DIMENSIONS

(Includes End Panels)

☐ EIMSS60SC-3

60.5 x 40.5 x 60 (in)
1537 x 1029 x 1524 (mm)

☐ EIMSS84SC-3

84.5 x 40.5 x 60 (in)
2146 x 1029 x 1524 (mm)

STANDARD FEATURES

Model Features

- Black metal base, interior and canopy.
- Air Deflector
- Easily accessible light switch and temperature control
- Insulated with high-density foam
- Adjustable leg levelers
- Wired for either top or bottom mount electrical connections
- Price tag molding

Refrigeration

- Condensate evaporator provided for a totally self-contained system
- Easy clean, rust-proof insulated evaporator coil compartment
- Refrigeration controls maintain 38°-40°F. Note: Case temperature will vary if the air curtain is disrupted
- R454C Refrigerant
- Thermometer

Shelving

- Adjustable black metal shelves, three tiers

Lighting

- LED top and undershelf lighting
- UL Safety and UL Sanitation Listed to NSF Standard
- DOE 2017 Compliant



WARRANTY*
One year Parts and Labor
2nd thru 5th year part only
service compressor
(U.S.A. and Canada)

Note: Information is subject to change at any time. Visit www.federalind.com for the most current specs.

ELEMENTS™ REFRIGERATED SELF-SERVE ISLAND MERCHANDISER

SIS #

Product Specifications

Intended Environment: Type I - Designed to operate in maximum ambient conditions of 75°F (24°C) and 55% relative humidity unless noted otherwise in system information below.

Zone	Intended Product To Be Displayed	Avg prod temp °F / °C
All	Packaged Refrigerated Products	38 °F / (3.3 °C)

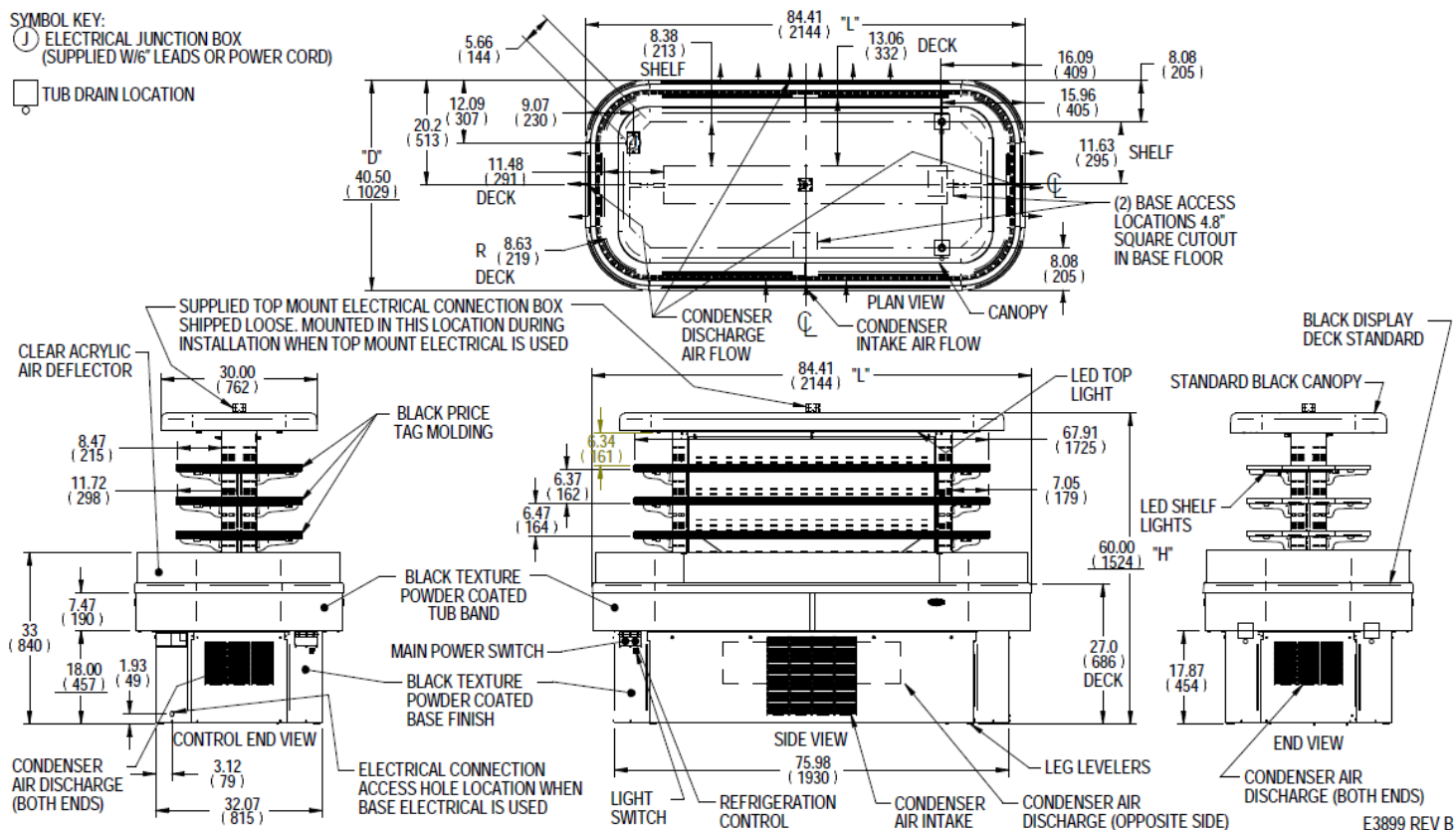
DIMENSIONS: xx"/(mm)

DIMENSION TOLERANCE +/- .19 (4.8)

SYMBOL KEY:

SYMBOL KEY:
 (J) ELECTRICAL JUNCTION BOX
 (SUPPLIED W/6" LEADS OR POWER CORD)

☐ TUB DRAIN LOCATION



								SELF CONTAINED					
MODEL	DIMENSION			SHELVING			INTERIOR VOLUME CU FT	PRODUCT AREA SQ FT	PERMANENT CONNECT		REFRIGERANT	CONDENSATE REMOVAL	SHIP WEIGHT
	L	D	H	# OF TIERS	D	L			2-WIRE + GROUND				LBS
	in	in	in		in	in			208-230/60/1				
	mm	mm	mm		mm	mm			AMPS	MAX FUSE SIZE			
EIMSS60SC-3	60.50	40.50	60.00	3	8.5	43.89	16.8 CU FT	26.0 SQ FT	15	20	R454c	CONDENSATE PAN	910 LBS
	1537	1029	1524		216	1115							413 KILO
EIMSS84SC-3	84.50	40.50	60.00	3	8.5	67.89	24.8 CU FT	38.7 SQ FT	16	30	R454c	CONDENSATE PAN	1150 LBS
	2146	1029	1524		216	1724							522 KILO

- Case temperature will vary if the air curtain disrupted
- Refrigerated cases are designed to operate in a maximum of 75°F (24°C) ambient and 55% relative humidity.
- Due to continuing engineering improvements, specifications are subject to change without notice.



The Signature of Quality.

FEDERAL INDUSTRIES

A Standex Company

215 Federal Avenue, Belleville, Wisconsin 53508-9201

Phone: 800-356-4206

Fax: 608-424-3234

Email: Geninfo@Federalind.com

Website: Federalind.com