



The Signature of Quality

FEDERAL INDUSTRIES

A Standex Company

215 Federal Avenue
Belleville, WI 53508-9201

Phone: 800-356-4206

Fax: 608-424-3234

Email: geninfo@federalind.com

Website: www.federalind.com

Project Name: _____

Item #: _____

Model #: _____ Qty: _____

Approval: _____

AIA#

SIS#

ELEMENTS REFRIGERATED SELF-SERVE LOW PROFILE MERCHANDISER

Designed with impulse sales in mind. Get maximum return with presentation and value in mind without sacrificing performance.



MODEL

DIMENSIONS

(Includes End Panels)

☐ ELPRSS-3

34.6 x 34 x 46 (in)
879 x 864 x 1168 (mm)

☐ ELPRSS-4

46.6 x 34 x 46 (in)
1184 x 864 x 1168 (mm)

☐ ELPRSS-6

70.6 x 34 x 46 (in)
1793 x 864 x 1168 (mm)

STANDARD FEATURES

Model Features

- Steel base construction.
- Textured black powder coated exterior and interior. Galvanized steel back.
- Black steel display deck and black interior.
- Acrylic end panels.
- Easily cleaned, rustproof, insulated evaporator coil compartment.
- Insulated with high-density foam.
- Rear access to the refrigeration system for quick easy service.
- Easily accessible light switch, power switch, and adjustable electronic control.
- Energy-saving night curtain.
- Adjustable Leg Levelers
- Cord and plug.

Refrigeration

- On-demand PTC condensate evaporator provided for a totally self-contained system. A condensate pump is required on the ELPRSS-6.
- Electronic temperature control maintains 38° (3.3°C) to 40° F (4.4°C) with on-demand defrost.
- R290 Refrigerant.
- Thermometer.

Shelving

- One tier adjustable solid black metal shelf.

Lighting

- Horizontal 3500K LED top light.
- DLC Certified, IP66 rated

Agency Approvals

- UL Safety and UL Sanitation Listed.
- DOE 2017 Compliant.



WARRANTY*
One year Parts and Labor
2nd thru 5th year part
only service compressor
(U.S.A and Canada)

Note: Information is subject to change at any time.
Visit www.federalind.com for the most current specs.

Revised 8/21/2025

AIA#

ELEMENTS REFRIGERATED SELF-SERVE LOW PROFILE MERCHANDISER

SIS#

Product Specifications

Intended Environment: Type I - Designed to operate in maximum ambient conditions of 75°F (24°C) and 55% relative humidity unless noted otherwise in system information below.

Zone	Intended Product To Be Displayed	Avg Prod Temp °F/°C
All	Packaged Refrigerated Products	38°F / (3.3°C)

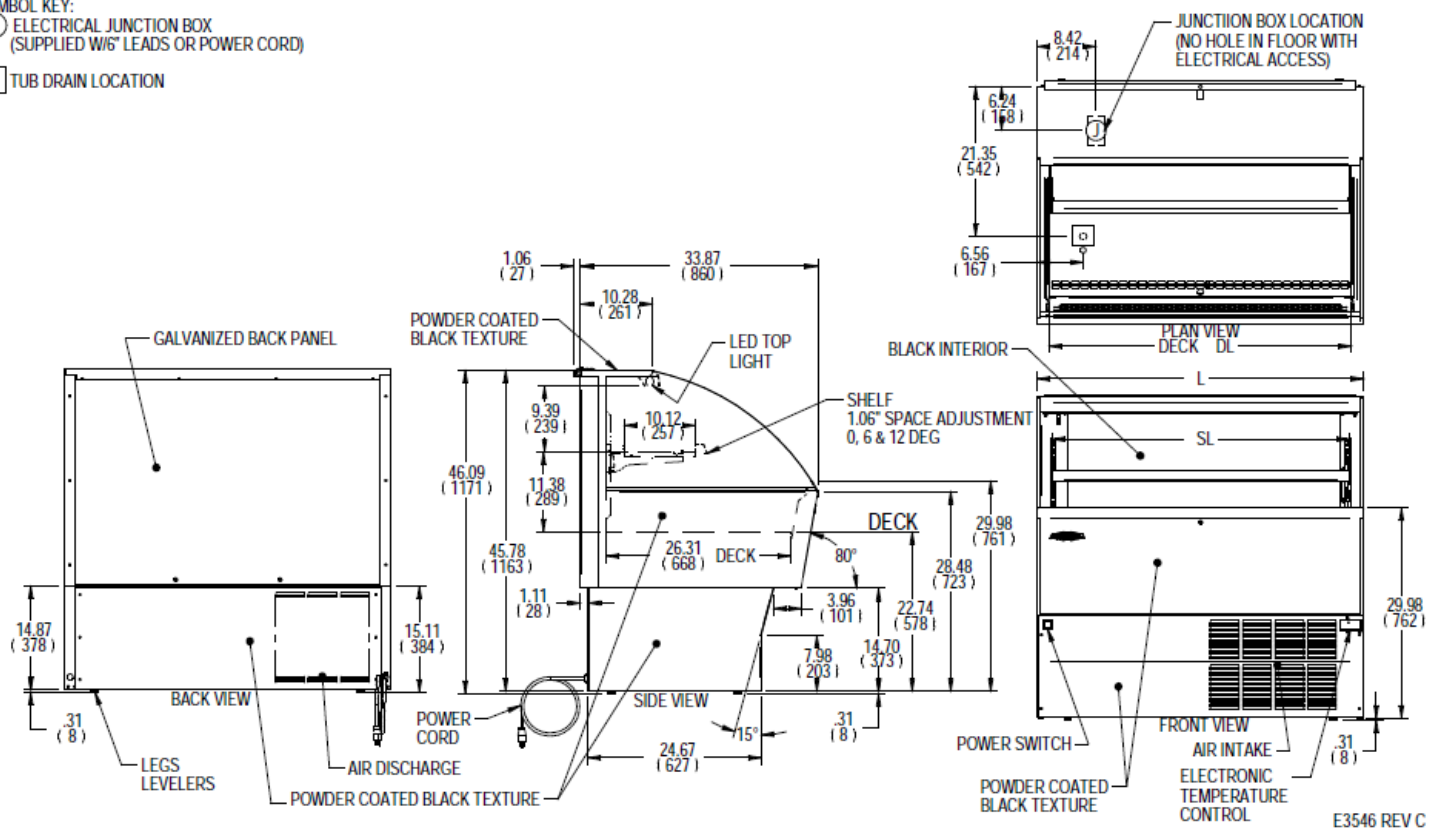
DIMENSION: xx"/(mm)

DIMENSION TOLERANCE +/- 0.19 (4.8)

SYMBOL KEY:

Ⓜ ELECTRICAL JUNCTION BOX
(SUPPLIED W/6 LEADS OR POWER CORD)

□ TUB DRAIN LOCATION



E3546 REV C

								SELF CONTAINED							
MODEL	DIMENSION				SHELVING			INTERIOR VOLUME CU FT	STANDARD CONNECTION CORD & PLUG				REFRIGERANT	CONDENSATE REMOVAL	SHIP
	L	D	H	DL	# OF TIERS	D	SL		2-WIRE + GROUND						WEIGHT
	in	in	in	in		in	in								LBS
	mm	mm	mm	mm		mm	mm		ELECTRICAL	AMPS	MAX FUSE SIZE	NEMA CORD & PLUG			KILO
ELPRSS3	34.60	34.0	46.0	31.0	1	12.1	30.5	7.8	120/60/1	10.4	15.0	NEMA 5-15P	R290	CONDENSATE PAN	450 LBS
	879	864	1168	787		307	775								204 KILO
ELPRSS4	46.60	34.0	46.0	43.0	1	12.1	42.5	10.5	120/60/1	10.4	15.0	NEMA 5-15P	R290	CONDENSATE PAN	525 LBS
	1184	864	1168	1092		307	1080								238 KILO
ELPRSS6	70.60	34.0	46.0	67.0	1	12.1	66.5	15.7	208-240/60/1	9.6	15.0	NEMA 6-15P	R290	CONDENSATE PUMP	700 LBS
	1793	864	1168	1702		307	1689								317 KILO

- Case temperature will vary if the air curtain is disrupted.
- The rear of the unit needs to be 6" from a wall.
- Electrical Requirement - The minimum circuit ampacity and maximum fuse size is 20 amps.
- Refrigerated cases are designed to operate in a maximum of 75°F (24°C) ambient and 55% relative humidity.
- Due to continuing engineering improvements, specifications are subject to change without notice.
- If a GFCI circuit is required, a GFCI Breaker must be used instead of a GFCI Receptical.



The Signature of Quality

FEDERAL INDUSTRIES

A Standex Company

215 Federal Avenue, Belleville, Wisconsin 53508-9201

Phone: 800-356-4206

Fax: 608-424-3234

Email: Geninfo@Federalind.com

Website: Federalind.com