



The Signature of Quality®

FEDERAL INDUSTRIES

A Standex Company

215 Federal Avenue
Belleville, WI 53508-9201

Phone: 800-356-4206

Fax: 608-424-3234

Email: geninfo@federalind.com

Website: www.federalind.com

Project Name: _____

Item #: _____

Model #: _____ Qty: _____

Approval: _____

AIA#

SIS#

ELEMENTS COUNTERTOP REFRIGERATED SERVICE MERCHANDISERS

The Elements countertop merchandiser provides value without sacrificing performance.



MODEL	DIMENSIONS (Includes End Panels)
<input type="checkbox"/> ERR3628	36 x 29.4 x 36.2 (in) 914 x 747 x 919 (mm)
<input type="checkbox"/> ERR4828	48 x 29.4 x 36.2 (in) 1219 x 747 x 919 (mm)

STANDARD FEATURES

Model Features

- Tempered thermopane front glass. Solid end panels.
- Removable sliding rear doors, shelf lights, shelf supports, and shelves.
- Removable, scratch-resistant, rustproof black display deck
- Easily accessible light switch and adjustable temperature control
- Average case temperature
- Black trim
- Stainless steel mirrored interior end panels.
- Cord and plug (six foot)
- Installation without recessing into counter
- Set directly on counter with condensing component mounted on rear

Refrigeration

- Thermometer
- Condensate evaporator provided for a totally self-contained system
- Average case temperature of 38° (3.3°C) to 40° F (4.4°C)
- R290 Refrigerant

Shelving

- Black shelves are adjustable up and down and can also be tilted in two positions. Two tiers.

Lighting

- 3500k LED top light and shelf lights
- DLC Certified, IP66 rated

Agency Approvals

- UL Safety and UL Sanitation Listed
- DOE 2017 Compliant



WARRANTY*
One year Parts and Labor
2nd thru 5th year part
only service compressor
(U.S.A and Canada)

Note: Information is subject to change at any time.
Visit www.federalind.com for the most current specs.

Revised 8/21/2025

AIA#

ELEMENTS COUNTERTOP REFRIGERATED SERVICE MERCHANDISERS

SIS#

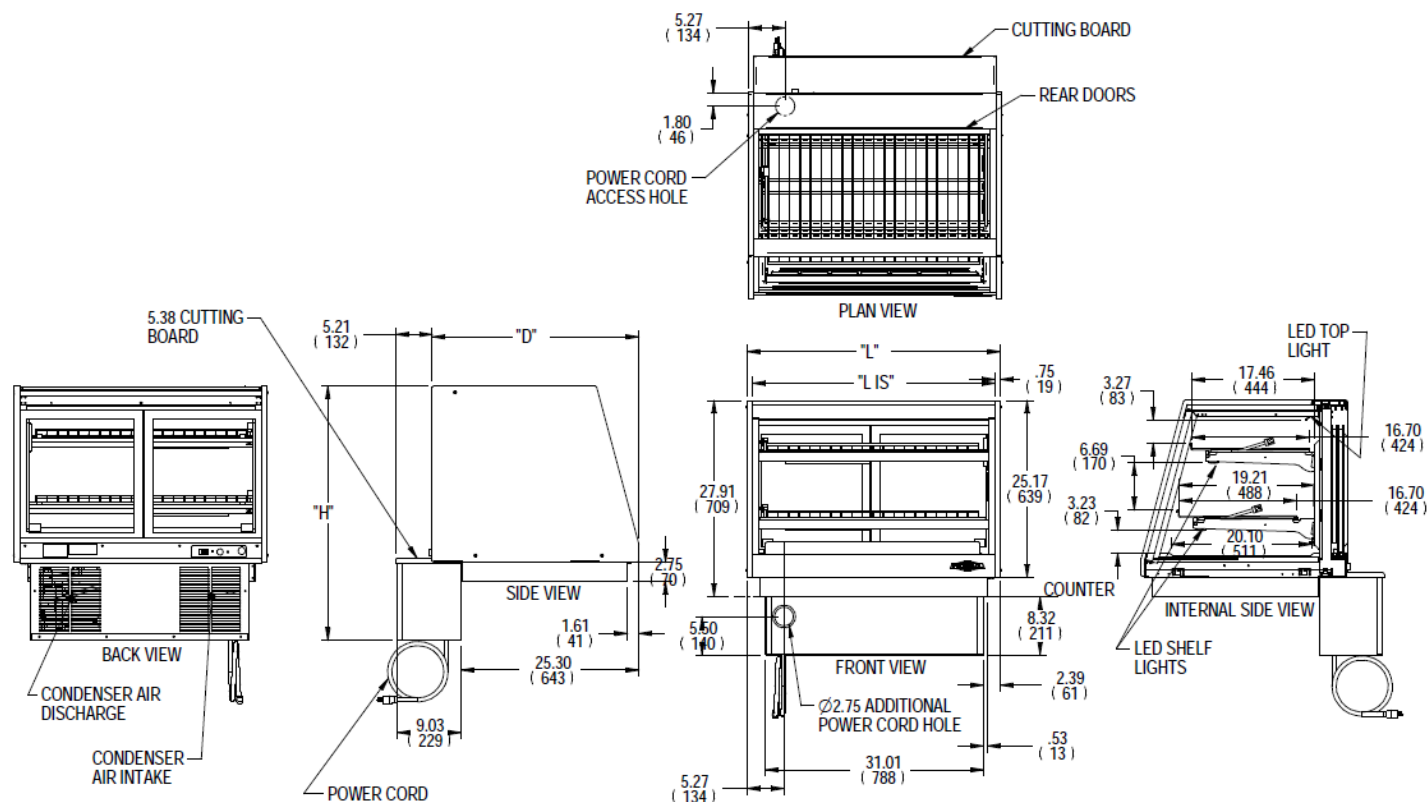
Product Specifications

Intended Environment: Type I - Designed to operate in maximum ambient conditions of 75°F (24°C) and 55% relative humidity unless noted otherwise in system information below.

Zone	Intended Product To Be Displayed	Avg Prod Temp °F/°C
All	Packaged Refrigerated Products	38°F / (3.3°C)

DIMENSION: xx"/(mm)

DIMENSION TOLERANCE +/- 0.19 (4.8)



E3226-1 REV B

									SELF CONTAINED							
MODEL	DIMENSION				SHELVING				INTERIOR VOLUME CU FT	ELECTRICAL			REFRIGERANT	CONDENSATE REMOVAL	SHIP	
	L	D	H	LIS	# OF TIERS	CAPACITY (BAKERY PANS)	D	L1		2-WIRE + GROUND 120/60/1					WEIGHT	
	in	in	in	in			in	in		AMPS	MAX FUSE SIZE	STANDARD NEMA CORD & PLUG				LBS
	mm	mm	mm	mm			mm	mm								
ERR3628	36.00	29.40	36.20	34.5	2	3 (18"X26")	16.7	32.2	9.25	6	15	NEMA 5-15P	R290	CONDENSATE EVAPORATOR	390 LBS	
	914	747	919	876			424	818							177 KILO	
ERR4828	48.00	29.40	36.20	46.5	2	(3)18"X26" & (3)18X12	16.7	44.2	12.50	6	15	NEMA 5-15P	R290	CONDENSATE EVAPORATOR	450 LBS	
	1219	747	919	1181			424	1123							204 KILO	

- If a GFCI circuit is required, a GFCI Breaker Must be used instead of GFCI receptacle.
- Refrigerated cases are designed to operate in a maximum of 75°F (24°C) ambient and 55% relative humidity.
- Due to continuing engineering improvements, specifications are subject to change without notice.

DOE 2017
Energy Efficiency
Compliant



The Signature of Quality

FEDERAL INDUSTRIES

A Standex Company

215 Federal Avenue, Belleville, Wisconsin 53508-9201

Phone: 800-356-4206

Fax: 608-424-3234

Email: Geninfo@Federalind.com

Website: Federalind.com