



The Signature of Quality®

FEDERAL INDUSTRIES

A Standex Company

215 Federal Avenue
Belleville, WI 53508-9201

Phone: 800-356-4206

Fax: 608-424-3234

Email: geninfo@federalind.com

Website: www.federalind.com

Project Name: _____

Item #: _____

Model #: _____ Qty: _____

Approval: _____

AIA#

SIS#

ELEMENTS COUNTERTOP REFRIGERATED SELF-SERVE MERCHANDISERS

The Elements counter top merchandiser provides value without sacrificing performance.

| MODEL | DIMENSIONS (Includes End Panels) |
|------------------------------------|--|
| <input type="checkbox"/> ERR3628SS | 36 x 29.4 x 36.2 (in) 914 x 747 x 919 (mm) |
| <input type="checkbox"/> ERR4828SS | 48 x 29.4 x 36.2 (in) 1219 x 747 x 919 (mm) |

STANDARD FEATURES

Model Features

- Tempered thermopane front glass. Solid end panels.
- Removable sliding rear doors, shelf lights, shelf supports, and shelves.
- Removable, scratch-resistant, rustproof black display deck
- Easily accessible light switch and adjustable temperature control
- Average case temperature
- Black trim
- Stainless steel mirrored interior end panels.
- Cord and plug (six foot)
- Installation without recessing into counter
- Set directly on counter with condensing component mounted on rear
- Lift-up front doors

Refrigeration

- Thermometer
- Condensate evaporator provided for a totally self-contained system
- Average case temperature of 38° (3.3°C) to 40° F (4.4°C)
- R290 Refrigerant

Shelving

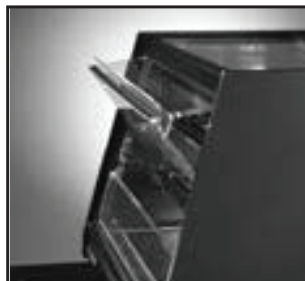
- Black shelves are adjustable up and down and can also be tilted in two positions. Two tiers.

Lighting

- 3500k LED top light and shelf lights
- DLC Certified, IP66 rated

Agency Approvals

- UL Safety and UL Sanitation Listed
- DOE 2017 Compliant



WARRANTY*
One year Parts and Labor
2nd thru 5th year part
only service compressor
(U.S.A and Canada)

Note: Information is subject to change at any time.
Visit www.federalind.com for the most current specs.

Revised 8/21/2025

AIA#

ELEMENTS COUNTERTOP REFRIGERATED SELF-SERVE MERCHANDISERS

SIS#

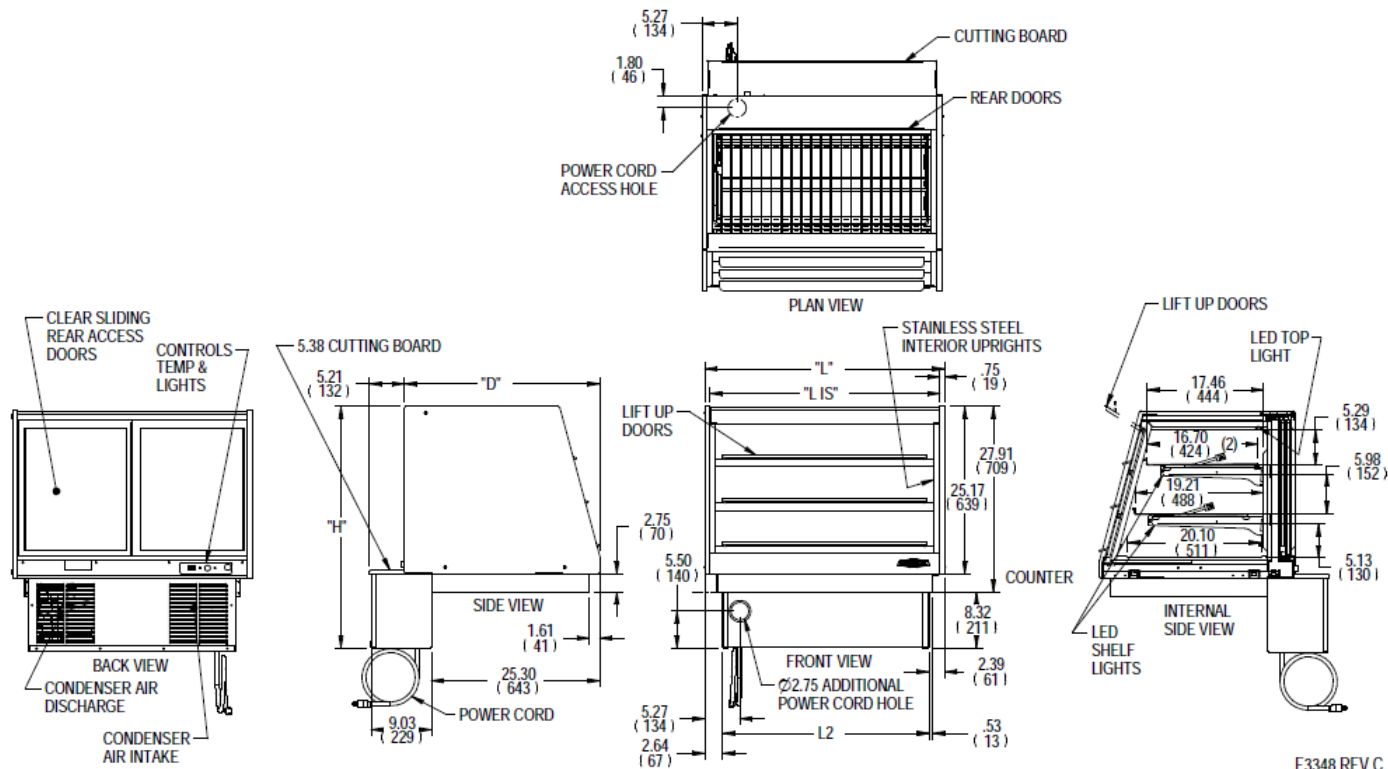
Product Specifications

Intended Environment: Type I - Designed to operate in maximum ambient conditions of 75°F (24°C) and 55% relative humidity unless noted otherwise in system information below.

| Zone | Intended Product To Be Displayed | Avg Prod Temp °F/°C |
|------|----------------------------------|---------------------|
| All | Packaged Refrigerated Products | 38°F / (3.3°C) |

DIMENSION: xx"/(mm)

DIMENSION TOLERANCE +/- 0.19 (4.8)



E3348 REV C

| | | | | | | | | | | SELF CONTAINED | | | | | | |
|-----------|-----------|------|------|------|------|---------------|------------------------------|------|------|-----------------------------|--------------------------|------------------|------------------------------|-------------|--------------------------|----------|
| MODEL | DIMENSION | | | | | SHELVING | | | | INTERIOR VOLUME CU FT | ELECTRICAL | | | REFRIGERANT | CONDENSATE REMOVAL | SHIP |
| | L | D | H | L2 | LIS | # OF TIERS | CAPACITY (BAKERY PANS) | D | L1 | | 2-WIRE + GROUND 120/60/1 | | | | | WEIGHT |
| | in | in | in | in | in | | | in | in | | AMPS | MAX FUSE SIZE | STANDARD NEMA CORD & PLUG | | | |
| | mm | mm | mm | mm | mm | | | mm | mm | | | | | | | |
| ERR3628SS | 36.0 | 29.4 | 36.2 | 31.0 | 34.5 | 2 | 3 (18"X26") | 16.7 | 32.7 | 9.25 | 6 | 15 | NEMA 5-15P | R290 | CONDENSATE EVAPORATOR | 400 LBS |
| | 914 | 747 | 919 | 787 | 876 | | | 424 | 831 | | | | | | | 181 KILO |
| ERR4828SS | 48.0 | 29.4 | 36.2 | 43.0 | 46.5 | 2 | (3)18"X26" & (3)18"X12" | 16.7 | 44.7 | 12.50 | 6 | 15 | NEMA 5-15P | R290 | CONDENSATE EVAPORATOR | 460 LBS |
| | 1219 | 747 | 919 | 1092 | 1181 | | | 424 | 1136 | | | | | | | 209 KILO |

- If a GFCI circuit is required, a GFCI Breaker Must be used instead of GFCI receptacle.
- Refrigerated cases are designed to operate in a maximum of 75°F (24°C) ambient and 55% relative humidity.
- Due to continuing engineering improvements, specifications are subject to change without notice.

DOE 2017
Energy Efficiency
Compliant



The Signature of Quality®

FEDERAL INDUSTRIES

A Standex Company

215 Federal Avenue, Belleville, Wisconsin 53508-9201

Phone: 800-356-4206

Fax: 608-424-3234

Email: Geninfo@Federalind.com

Website: Federalind.com