



The Signature of Quality

FEDERAL INDUSTRIES

A Standex Company

215 Federal Avenue
Belleville, WI 53508-9201

Phone: 800-356-4206

Fax: 608-424-3234

Email: geninfo@federalind.com

Website: www.federalind.com

Project Name: _____

Item #: _____

Model #: _____ Qty: _____

Approval: _____

AIA#

SIS#

ELEMENTS™ CONVERTIBLE SERVICE OVER REFRIGERATED SELF-SERVE MERCHANDISER

Display a variety of products and serve more customers with presentation and value in mind without sacrificing performance.



MODEL	DIMENSIONS (Includes End Panels)
<input type="checkbox"/> ESSRC5052	50 x 34.3 x 52.6 (in) 1270 x 864 x 1321 (mm)
<input type="checkbox"/> ESSRC5952	59 x 34.3 x 52.6 (in) 1499 x 864 x 1321 (mm)
<input type="checkbox"/> ESSRC7752	77 x 34.3 x 52.6 (in) 1956 x 864 x 1321 (mm)

STANDARD FEATURES

Refrigerated Self-Serve Bottom Display

- Steel base construction with black exterior
- Black interior
- Horizontal LED top light
- Two-tier black display step
- Thermometer
- Condensate evaporator provided for a self-contained system
- Easy clean, rustproof insulated evaporator coil compartment
- Easily accessible light switch and adjustable power switch
- Average case temperature of 38° to 40°F is maintained
- Rear access to the refrigeration system for quick and easy service
- R290 Refrigerant
- Adjustable leg levelers
- Cord and plug

Service Top Display

- Baffle system converts display from non-refrigerated to refrigerated
- Clear glass rear sliding doors
- Adjustable black wire shelf
- Shielded top and shelf light
- Thermometer

Shelving

- Adjustable black wire shelf

Lighting

- 3500K LED Horizontal top light and shelf light
- DLC Certified, IP66 rated

Agency Approvals

- UL Safety and UL Sanitation Listed
- DOE 2017 Compliant



WARRANTY*
One year Parts and Labor
2nd thru 5th year part
only service compressor
(U.S.A and Canada)

Note: Information is subject to change at any time.
Visit www.federalind.com for the most current specs.

Revised 8/21/2025

AIA#

ELEMENTS™ CONVERTIBLE SERVICE OVER REFRIGERATED SELF-SERVE MERCHANDISER

SIS#

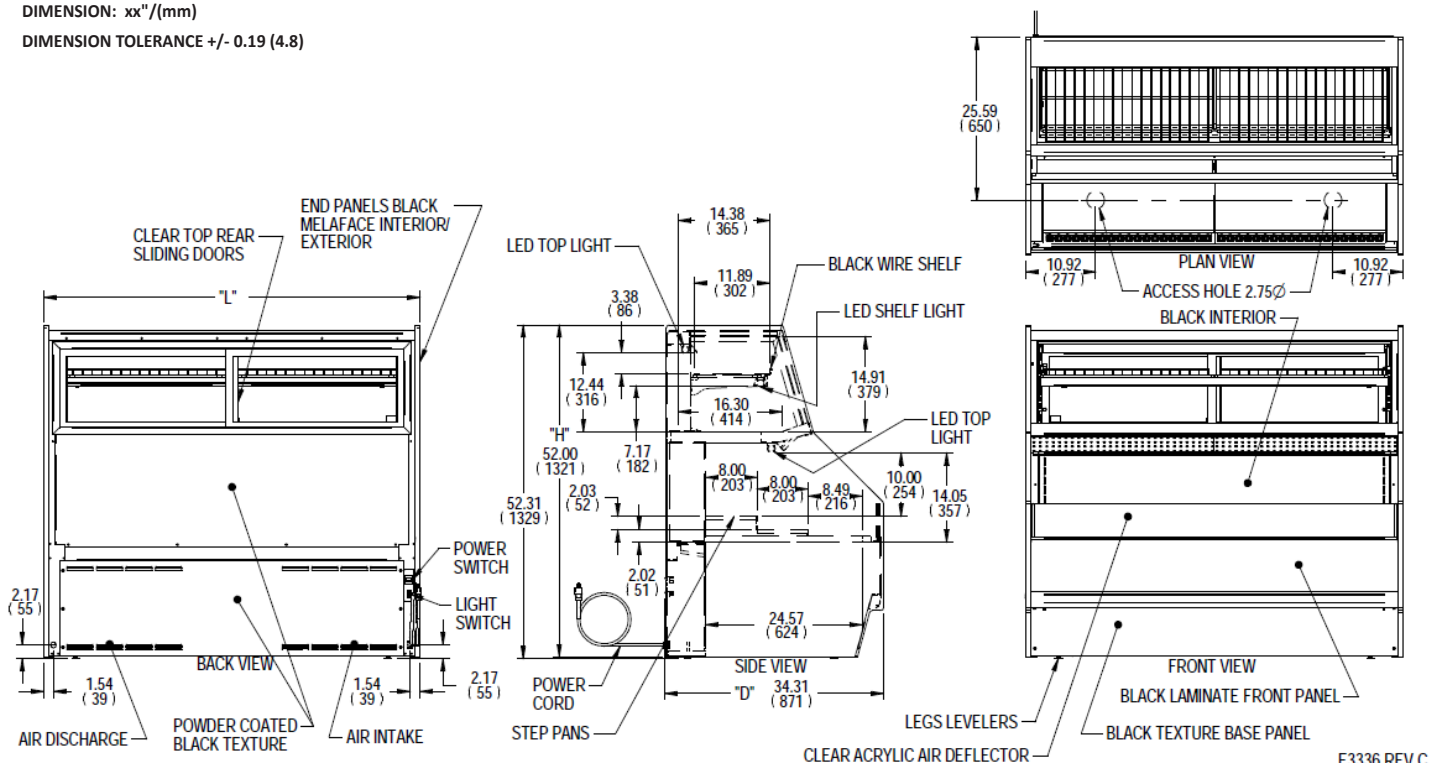
Product Specifications

Intended Environment: Type I - Designed to operate in maximum ambient conditions of 75°F (24°C) and 55% relative humidity unless noted otherwise in system information below.

Zone	Intended Product To Be Displayed	Avg Prod Temp °F/°C
All	Packaged Refrigerated Products	38°F / (3.3°C)

DIMENSION: xx"/(mm)

DIMENSION TOLERANCE +/- 0.19 (4.8)



E3336 REV C

										SELF CONTAINED						
MODEL	DIMENSION			TUB DRAIN	SHELVING			TOP	BOTTOM	STANDARD CONNECTION CORD & PLUG				REFRIGERANT	CONDENSATE REMOVAL	SHIP
	L	D	H	L2	# OF TIERS	D	L	INTERIOR	INTERIOR	2-WIRE + GROUND			NEMA CORD & PLUG			WEIGHT
	in	in	in	in		in	in	VOLUME	VOLUME	ELECTRICAL	AMPS	MAX FUSE SIZE				LBS
	mm	mm	mm	mm		mm	mm	CU FT	CU FT							KILO
ESSRC5052	50.00	34.30	52.60	25.00	1	12.4	45.75	7.10	11.80	208- 240/60/1	7.0	15	NEMA 6-15P	R290	CONDENSATE PAN	720 LBS
	1270	871	1336	635		315	1162									327 KILO
ESSRC5952	59.00	34.30	52.60	29.47	1	12.4	54.75	8.50	14.00	208- 240/60/1	7.5	15	NEMA 6-15P	R290	CONDENSATE PAN	845 LBS
	1499	871	1336	749		315	1391									383 KILO
ESSRC7752	77.00	34.30	52.60	38.47	1	12.4	72.75	11.20	18.30	208- 240/60/1	7.5	15	NEMA 6-15P	R290	CONDENSATE PAN	1010 LBS
	1956	871	1336	977		315	1848									458 KILO

- Refrigerated cases are designed to operate in a maximum of 75°F (24°C) ambient and 55% relative humidity.
- Due to continuing engineering improvements, specifications are subject to change without notice.



The Signature of Quality®

FEDERAL INDUSTRIES

A Standex Company

215 Federal Avenue, Belleville, Wisconsin 53508-9201

Phone: 800-356-4206

Fax: 608-424-3234

Email: Geninfo@Federalind.com

Website: Federalind.com