



The Signature of Quality

FEDERAL INDUSTRIES

A Standex Company
215 Federal Avenue
Belleville, WI 53508-9201

Phone: 800-356-4206
Fax: 608-424-3234
Email: geninfo@federalind.com
Website: www.federalind.com

Project Name: _____

Item #: _____

Model #: _____ Qty: _____

Approval: _____

AIA#

SIS#

Quick Ship - Under Counter Slim-Line Display Case (Square Ends, Refrigerated, Self-Serve)

Incorporate into your own counter to drive product sales. The under-counter merchandiser will entice customers with last minute impulse sales through visual appeal.



UCRSL4833S-QS

MODEL	DIMENSIONS (Includes End Panels)
<input type="checkbox"/> UCRSL3633S-QS	35.7 x 24 x 32.5 (in) 907 x 610 x 826 (mm)
<input type="checkbox"/> UCRSL4833S-QS	47.7 x 24 x 32.5 (in) 1212 x 610 x 826 (mm)

STANDARD FEATURES

Model Features

- Black interior
- Squared ends with mirrored liner
- Black top
- Black 1 step riser
- Black powder coated steel base
- Black exterior
- Light and power switch on back of case
- Front access to refrigeration system for quick and easy service
- Cord & plug
- 2.5" Recessed casters with adjustable leg lever
- Energy saving night curtain

Refrigeration

- On-Demand PTC condensate evaporator provided for a totally self-contained system
- Electronic temperature controls maintain 38°- 40°F
- Easy clean, rustproof insulated evaporator coil compartment
- Rear condensing unit air intake & discharge
- R290 Refrigerant
- Thermometer

Lighting

- 3500K LED top light

Agency Approvals

- UL, C-UL and UL Sanitation listed to NSF-7, Type I conditions
- DOE 2017 compliant



UCRSL3633S-QS Counter not included



WARRANTY*
One year Parts and Labor
2nd thru 5th year part
only service compressor
(U.S.A and Canada)



Note: Information is subject to change at any time.
Visit www.federalind.com for the most current specs.



AIA# Quick Ship - Under Counter Slim-Line Display Case (Square Ends, Refrigerated, Self-Serve)

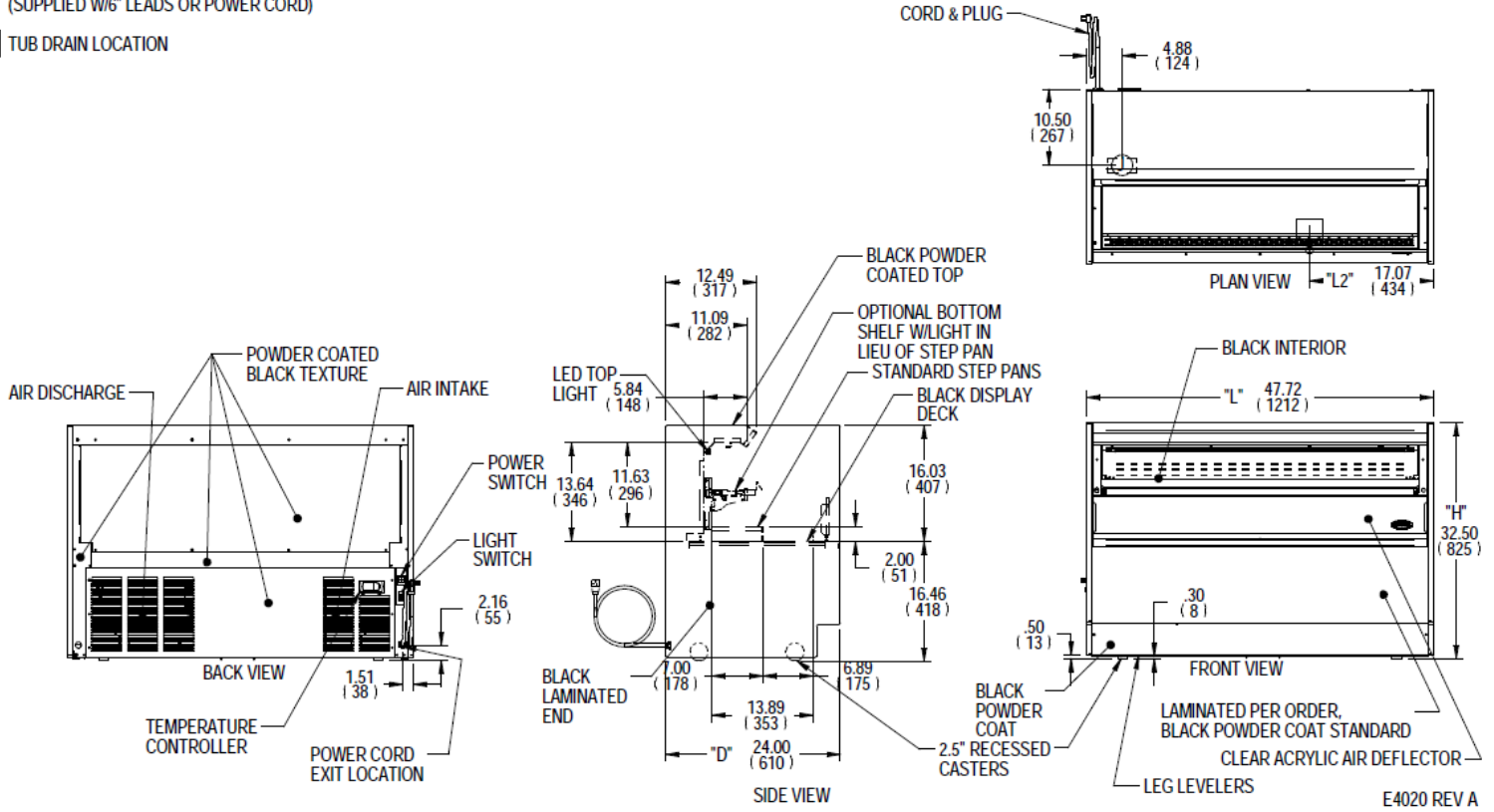
SIS# Product Specifications

Intended Environment: Type I - Designed to operate in maximum ambient conditions of 75°F (24°C) and 55% relative humidity.

Zone	Intended Product To Be Displayed	Avg Prod Temp °F/°C
All	Packaged Refrigerated Products	38°F / (3.3°C)

DIMENSION: xx"/(mm)
 DIMENSION TOLERANCE +/- 0.25 (6.4)

SYMBOL KEY:
 ELECTRICAL JUNCTION BOX (SUPPLIED W/6" LEADS OR POWER CORD)
 TUB DRAIN LOCATION



MODEL	DIMENSION			TUB DRAIN	STEP RISER	INTERIOR VOLUME CU FT	ELECTRICAL	SELF CONTAINED			REFRIGERANT	CONDENSATE REMOVAL	SHIP WEIGHT		
	L	D	H	L2	# OF STEPS			D	L	STANDARD CONNECTION					
	in	in	in	in				in	in	CORD & PLUG					
	mm	mm	mm	mm	mm			mm	mm	AMPS				MAX FUSE SIZE	NEMA CORD & PLUG
UCRSL3633S-QS	35.7	24.0	32.5	8.01	1	7.00	33.6	120/60/1	10.0	15	5-15	R290	CONDENSATE PAN	365 LBS	
	907	610	826	203		178	853							166 KILO	
UCRSL4833S-QS	47.7	24.0	32.5	17.01	1	7.00	45.6	120/60/1	10.0	15	5-15	R290	CONDENSATE PAN	495 LBS	
	1212	610	826	432		178	1158							224 KILO	

- Case temperature will vary if the air curtain is disrupted.
- Due to continuing engineering improvements, specifications are subject to change without notice.



FEDERAL INDUSTRIES
 A Standex Company
 215 Federal Avenue Belleville, Wisconsin 53508-9201

Phone: 800-356-4206
Fax: 608-424-3234
Email: Geninfo@Federalind.com
Website: Federalind.com