

**FEDERAL INDUSTRIES**

A Standex Company

215 Federal Avenue
Belleville, WI 53508-9201Phone: 800-356-4206
Fax: 608-424-3234Email: geninfo@federalind.com
Website: www.federalind.com*The Signature of Quality®*

Project Name: _____

Item #: _____

Model #: _____ Qty: _____

Approval: _____

AIA#

SIS#

STRAIGHT GLASS HIGH VOLUME DUAL ZONE CASE

Display more product and serve more customers
with presentation and value in mind. Designed for
continuous case line-ups.



SGR5948DZ Shown

MODEL	DIMENSIONS (Includes End Panels)
<input type="checkbox"/> SGR5042DZ	50.13 x 35.31 x 42 (in) 1273 x 897 x 1067 (mm)
<input type="checkbox"/> SGR5048DZ	50.13 x 35.31 x 48 (in) 1273 x 897 x 1219 (mm)
<input type="checkbox"/> SGR5942DZ	59.13 x 35.31 x 42 (in) 1502 x 897 x 1067 (mm)
<input type="checkbox"/> SGR5948DZ	59.13 x 35.31 x 48 (in) 1502 x 897 x 1219 (mm)
<input type="checkbox"/> SGR7742DZ	77.13 x 35.31 x 42 (in) 1959 x 897 x 1067 (mm)
<input type="checkbox"/> SGR7748DZ	77.13 x 35.31 x 48 (in) 1959 x 897 x 1219 (mm)

STANDARD FEATURES**Model Features**

- Single base design.
- Left side refrigerated, right side non-refrigerated from customer view.
- Tempered thermopane tilt-out front glass for easy cleaning. Front glass is sloped for high visual product display.
- Tempered thermopane glass top, ends, and doors.
- Removable sliding rear doors, shelf lights, shelf supports, and shelves.
- Steel base construction with a choice of six standard laminates on base. Other finishes optional.
- Black trim
- White scratch-resistant display deck.
- Adjustable Leg Levelers

Added Features for Refrigerated Side

- Condenser air filter on self-contained units.
- Thermometer.
- Condensate evaporator provided for a totally self contained system.
- Oversized coil and low-velocity fan system maintains high humidity and product freshness.
- Easy clean, rustproof insulated evaporator coil compartment.
- Adjustable temperature control.
- Average case temperature of 38° to 40° is maintained.
- Rear access of the refrigeration system for quick and easy service.
- R290 Refrigerant

Shelving

- Adjustable white wire shelves. Shelves are adjustable up and down and can also be tilted in three positions. 48" models have three tiers of shelves; 42" models have two tiers of shelves.

Lighting

- LED top light and shelf lights.
- **Agency Approvals**
- UL Safety and UL Sanitation listed
- DOE 2017 Compliant

OPTIONAL ACCESSORIES

- | | |
|--|--|
| <input type="checkbox"/> Special Base Finish | <input type="checkbox"/> With Laminated Exterior |
| <input type="checkbox"/> Glass Shelves | <input type="checkbox"/> Reflective Rear Doors |
| <input type="checkbox"/> Rear Wrapping Board | <input type="checkbox"/> Casters/Cord & Plug Included |
| <input type="checkbox"/> Cord & Plug (Self-Contained Models Only) (NEMA 5-15P) | (Self-Contained Models Only) |
| <input type="checkbox"/> Remote Refrigeration | <input type="checkbox"/> Legs |
| <input type="checkbox"/> Black, Gold, or Chrome Wire Shelves | <input type="checkbox"/> Top Cutting Board, White |
| <input type="checkbox"/> Reflective Ends | <input type="checkbox"/> Package Shelf |
| <input type="checkbox"/> White or Mirrored Interior Ends | <input type="checkbox"/> Light Below Package Shelf |
| | <input type="checkbox"/> Front Glass and Rear Door Locks |



WARRANTY*
One year Parts and Labor
2nd thru 5th year part
only service compressor
(U.S.A and Canada)

Note: Information is subject to change at any time.
Visit www.federalind.com for the most current specs.

Revised 8/18/2025

AIA#

SRAIGHT GLASS HIGH VOLUME DUAL ZONE CASE

SIS#

Product Specifications

Intended Environment: Type I - Designed to operate in maximum ambient conditions of 75°F (24°C) and 55% relative humidity unless noted otherwise in system information below.

Zone	Intended Product To Be Displayed	Avg Prod Temp °F/°C
All	Packaged Refrigerated Products	38°F / (3.3°C)

DIMENSION: xx"/(mm)

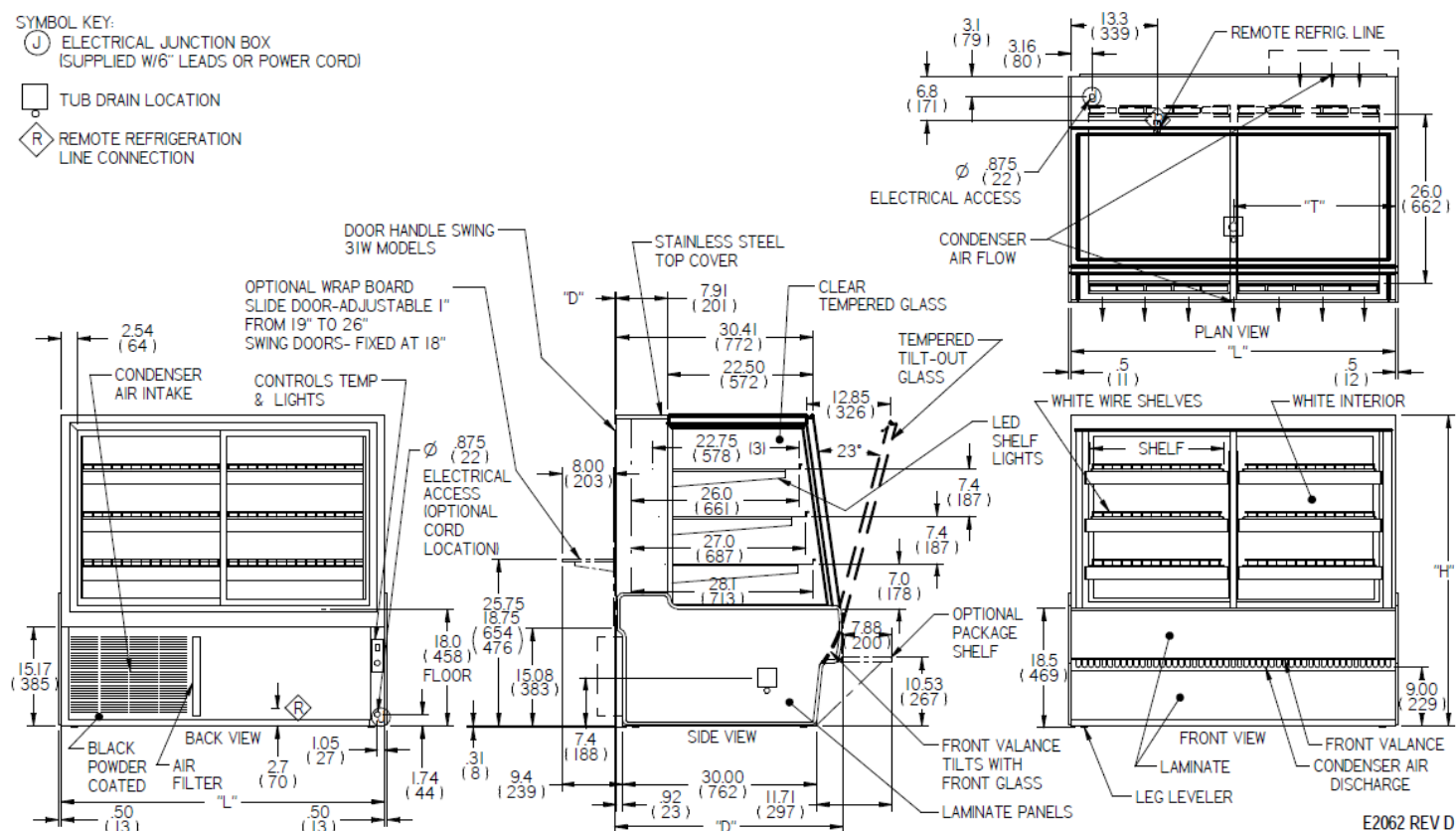
DIMENSION TOLERANCE +/- 0.25 (6.4)

SYMBOL KEY:

ⓐ ELECTRICAL JUNCTION BOX
(SUPPLIED W/6" LEADS OR POWER CORD)

□ TUB DRAIN LOCATION

Ⓡ REMOTE REFRIGERATION
LINE CONNECTION



E2062 REV D

MODEL	DIMENSION			DOOR DEPTH	TUB DRAIN	# OF TIERS	SHELVING			TOTAL INTERIOR VOLUME CU FT	SELF CONTAINED				REMOTE							
	L	D	H				CAPACITY (BAKERY PANS)	D	L		2-WIRE + GROUND 120/60/1	REFRIGERANT	CONDENSATE REMOVAL	SHIP WEIGHT LBS	OPTIONAL NEMA CORD & PLUG 2-WIRE + GROUND 120/60/1	PERMANENT 2-WIRE + GROUND 120/60/1	REFRIGERANT	CONDENSATE REMOVAL	BTU'S @+20°	SHIP WEIGHT LBS		
	in	in	in	in	in			in														
	mm	mm	mm	mm	mm		mm	mm	AMPS		MAX FUSE SIZE	KILO	KILO	AMPS	MAX FUSE SIZE	KILO	KILO					
SGR5042DZ	50.13	35.31	42	0.5	25.1	4	6 (18"x26")	22.75	21.00	18.31	12.00	15A	R290	CONDENSATE PAN	560 LBS	NEMA 5-15P	3.00	15A	R449A	CONDENSATE PAN	2800	570
	1273	897	1067	13	636			254 KIL0	259 KIL0													
SGR5048DZ	50.13	35.31	48	0.5	25.1	6	8 (18"x26")	22.75	21.00	22.86	12.00	15A	R290	CONDENSATE PAN	605 LBS	NEMA 5-15P	3.00	15A	R449A	CONDENSATE PAN	2800	590
	1273	897	1219	13	636			274 KIL0	268 KIL0													
SGR5942DZ	59.13	35.31	42	0.5	29.6	4	6 (18"x26")	22.75	25.50	21.78	12.00	15A	R290	CONDENSATE PAN	630 LBS	NEMA 5-15P	3.00	15A	R449A	CONDENSATE PAN	3600	625
	1502	897	1067	13	751			286 KIL0	283 KIL0													
SGR5948DZ	59.13	35.31	48	0.5	29.6	6	8 (18"x26")	22.75	25.50	27.19	12.00	15A	R290	CONDENSATE PAN	670 LBS	NEMA 5-15P	3.00	15A	R449A	CONDENSATE PAN	3600	665
	1502	897	1219	13	751			304 KIL0	302 KIL0													
SGR7742DZ	77.13	35.31	42	0.5	38.6	4	6 (18"x26")& 6 (9"x26")	22.75	34.50	28.72	12.00	15A	R290	CONDENSATE PAN	740 LBS	NEMA 5-15P	3.00	15A	R449A	CONDENSATE PAN	3800	735
	1959	897	1067	13	979			578 876	336 KIL0						333 KIL0							
SGR7748DZ	77.13	35.31	48	0.5	38.6	6	8 (18"x26")& 8 (9"x26")	22.75	34.50	35.85	12.00	15A	R290	CONDENSATE PAN	850 LBS	NEMA 5-15P	3.00	15A	R449A	CONDENSATE PAN	3800	845
	1959	897	1219	13	979			578 876	385 KIL0						383 KIL0							

- If a GFCI circuit is required, a GFCI Breaker MUST be used instead of GFCI receptacle.
- Refrigerated cases are designed to operate in a maximum of 75°F (24°C) ambient and 55% relative humidity.
- Due to continuing engineering improvements, specifications are subject to change without notice.

DOE 2017
Energy Efficiency
Compliant



The Signature of Quality®

FEDERAL INDUSTRIES

A Standex Company

215 Federal Avenue Belleville, Wisconsin 53508-9201

Phone: 800-356-4206

Fax: 608-424-3234

Email: Geninfo@Federalind.com

Website: Federalind.com