



The Signature of Quality

FEDERAL INDUSTRIES

A Standex Company

215 Federal Avenue
Belleville, WI 53508-9201

Phone: 800-356-4206

Fax: 608-424-3234

Email: geninfo@federalind.com

Website: www.federalind.com

Project Name: _____

Item #: _____

Model #: _____ Qty: _____

Approval: _____

AIA#

SIS#

STRAIGHT GLASS HIGH VOLUME REFRIGERATED BAKERY CASE

MODEL	DIMENSIONS (Includes End Panels)
<input type="checkbox"/> SGR3642	36.13 x 35.31 x 42 (in) 918 x 897 x 1067 (mm)
<input type="checkbox"/> SGR5042	50.13 x 35.31 x 42 (in) 1273 x 897 x 1067 (mm)
<input type="checkbox"/> SGR5942	59.13 x 35.31 x 42 (in) 1502 x 897 x 1067 (mm)
<input type="checkbox"/> SGR7742	77.13 x 35.31 x 42 (in) 1959 x 897 x 1067 (mm)

MODEL	DIMENSIONS (Includes End Panels)
<input type="checkbox"/> SGR3648	36.13 x 35.31 x 48 (in) 918 x 897 x 1219 (mm)
<input type="checkbox"/> SGR5048	50.13 x 35.31 x 48 (in) 1273 x 897 x 1219 (mm)
<input type="checkbox"/> SGR5948	59.13 x 35.31 x 48 (in) 1502 x 897 x 1219 (mm)
<input type="checkbox"/> SGR7748	77.13 x 35.31 x 48 (in) 1959 x 897 x 1219 (mm)



SGR5042 Shown

SGR5948 Shown

Display more product and serve more customers with presentation and value in mind. Designed for continuous case line-ups without middle end glass.

OPTIONAL ACCESSORIES

- | | |
|---|--|
| <input type="checkbox"/> Special Base Finish | <input type="checkbox"/> Legs |
| <input type="checkbox"/> Glass Shelves | <input type="checkbox"/> Cord & Plug |
| <input type="checkbox"/> Rear Wrapping Board | <input type="checkbox"/> Top Cutting Board, White |
| <input type="checkbox"/> Casters/Cord & Plug Included
(Self-Contained Models Only) | <input type="checkbox"/> Package Shelf |
| <input type="checkbox"/> Remote Condensing Unit (EEV Included) | <input type="checkbox"/> Light Below Package Shelf |
| <input type="checkbox"/> Reflective Ends | <input type="checkbox"/> Black, Gold, or Chrome Wire Shelves |
| <input type="checkbox"/> White or Mirrored Interior Ends
with Laminated Exterior | <input type="checkbox"/> Front Glass and Rear Door Locks |
| <input type="checkbox"/> Reflective Rear Doors | <input type="checkbox"/> Joining Kit for Continuous Line-ups |

STANDARD FEATURES

Model Features

- Tempered thermopane tilt-out front glass for easy cleaning. Front glass is sloped for high visual product display.
- Tempered thermopane glass top, ends, and doors.
- Removable sliding rear doors, shelf lights, shelf supports, and shelves.
- Steel base construction with a choice of six standard laminates on base. Other finishes optional.
- Removable, scratch-resistant, rustproof white display deck.
- Easily accessible light switch and adjustable temperature control.
- Average case temperature of 38° to 40° F is maintained.
- Rear access to the refrigeration system for quick and easy service.
- Designed for continuous line-ups.
- Black trim. Others optional
- Adjustable Leg Levelers

Refrigeration

- Condensate evaporator provided for a totally self-contained system.
- Oversized coil and low-velocity fan system maintains high humidity and product freshness.
- Easy clean, rustproof insulated evaporator coil compartment.
- Condenser air filter on self-contained units.
- Thermometer.
- R290 Refrigerant

Shelving

- Adjustable white wire shelves. Shelves are adjustable up and down and can also be tilted in three positions. 48" models have three tiers of shelves; 42" models have two tiers of shelves.

Lighting

- LED top light and shelf lights.

Agency Approvals

- UL Safety and UL Sanitation listed
- DOE 2017 Compliant



WARRANTY*
One year Parts and Labor
2nd thru 5th year part
only service compressor
(U.S.A and Canada)

Note: Information is subject to change at any time.
Visit www.federalind.com for the most current specs.

Revised 8/18/2025

AIA#

STRAIGHT GLASS HIGH VOLUME REFRIGERATED BAKERY CASE

SIS#

Product Specifications

Intended Environment: Type I - Designed to operate in maximum ambient conditions of 75°F (24°C) and 55% relative humidity unless noted otherwise in system information below.

Zone	Intended Product To Be Displayed	Avg Prod Temp °F/°C
All	Packaged Refrigerated Products	38°F / (3.3°C)

DIMENSION: xx"/(mm)

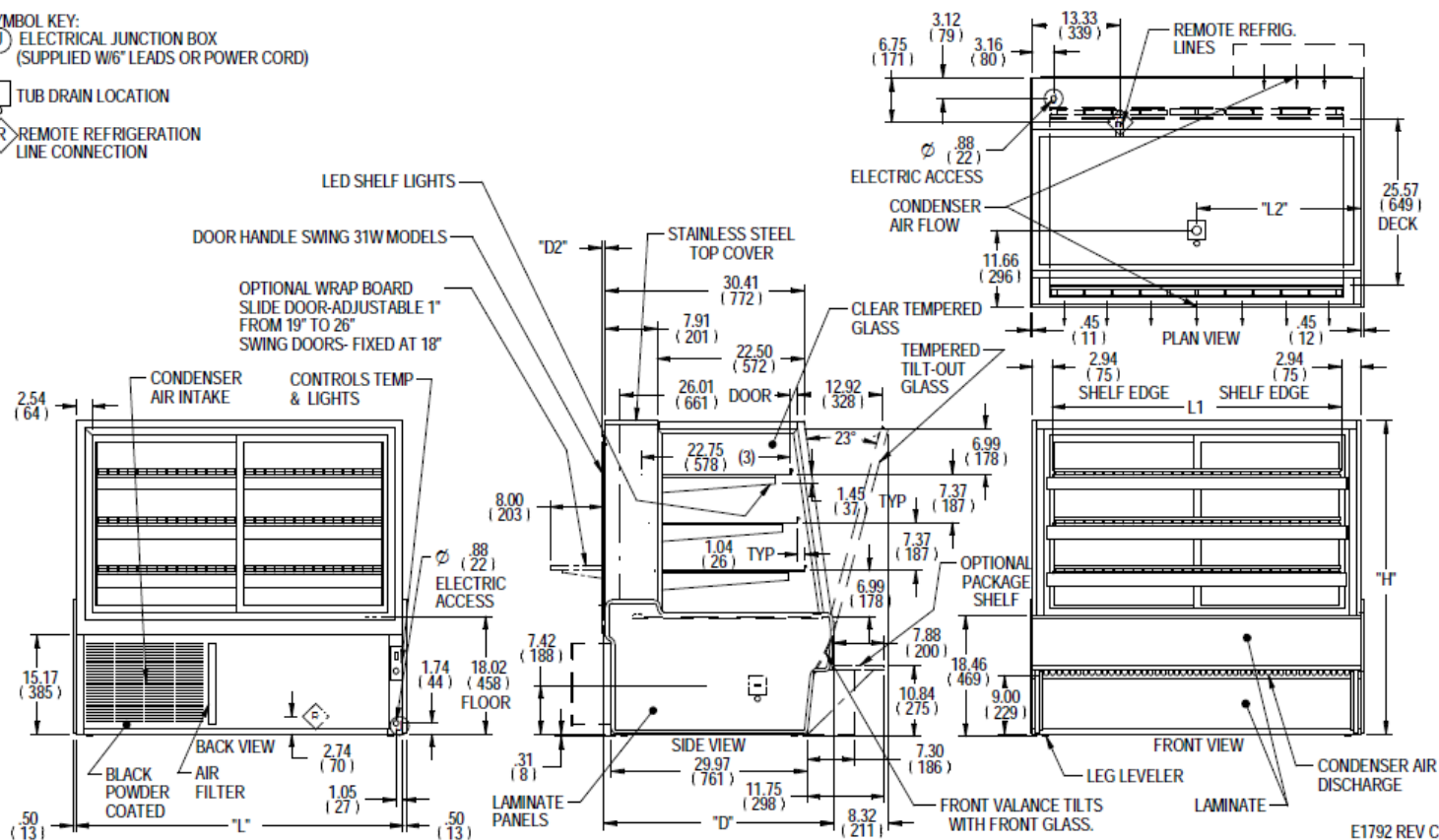
DIMENSION TOLERANCE +/- 0.25 (6.4)

SYMBOL KEY:

Ⓜ ELECTRICAL JUNCTION BOX
(SUPPLIED W/6" LEADS OR POWER CORD)

□ TUB DRAIN LOCATION

Ⓡ REMOTE REFRIGERATION
LINE CONNECTION



E1792 REV C

MODEL	DIMENSION			DOOR DEPTH	TUB DRAIN	# OF TIERS	SHELVING			INTERIOR VOLUME CU FT	PERMANENT CONNECT		REFRIGERANT	CONDENSATE REMOVAL	SHIP WEIGHT	OPTIONAL NEMA CORD & PLUG	PERMANENT CONNECT		REFRIGERANT	CONDENSATE REMOVAL	BTU'S @+20'	SHIP WEIGHT										
	L	D	H	D2	L2		CAPACITY (BAKERY PANS)	D	L1		2-WIRE + GROUND	MAX FUSE SIZE			LBS	2-WIRE + GROUND	120/60/1	MAX FUSE SIZE				LBS	KILO									
	in	in	in	in	in			in	in		AMPS																					
	mm	mm	mm	mm	mm			mm	mm																							
	SGR3642	36.13	35.31	42	0.5			5.28	2		3 (18"X26") & 3 (9"X26")	22.8			30.3	12.00	15A	R290				CONDENSATE PAN	440	NEMA 5-15P	3.0 A	15	R449A	CONDENSATE PAN	3600	405		
918		897	1067	13	134	578	768																								184 KILO	
36.13		35.31	48	0.5	5.28	22.8	30.3																								480	
SGR3648	918	897	1219	13	134	3	4 (18"X26") & 4 (9"X26")	578	768	16.58	12.0	15A	R290	CONDENSATE PAN	234 KILO	NEMA 5-15P	3.0 A	15	R449A	CONDENSATE PAN	3600	218 KILO										
	36.13	35.31	42	0.5	25.05			22.8	44.3																							540
	1273	897	1067	13	636			578	1124																							245 KILO
SGR5042	50.13	35.31	42	0.5	25.05	2	6 (18"X26") & 3 (9"X26")	22.8	44.3	18.68	12.0	15A	R290	CONDENSATE PAN	575	NEMA 5-15P	3.0 A	15	R449A	CONDENSATE PAN	4300	540										
	1273	897	1067	13	636			578	1124																							245 KILO
	50.13	35.31	48	0.5	25.05			22.8	44.3																							580
SGR5048	1273	897	1219	13	636	3	8 (18"X26") & 4 (9"X26")	578	1124	23.31	12.0	15A	R290	CONDENSATE PAN	620	NEMA 5-15P	3.0 A	15	R449A	CONDENSATE PAN	4300	263 KILO										
	59.13	35.31	42	0.5	29.55			22.8	53.3																							615
	1502	897	1067	13	751			578	1353																							279 KILO
SGR5942	59.13	35.31	48	0.5	29.55	2	9 (18 X 26)	22.8	53.3	22.15	12.0	15A	R290	CONDENSATE PAN	655	NEMA 5-15P	4.0 A	15	R449A	CONDENSATE PAN	4500	615										
	1502	897	1067	13	751			578	1353																							279 KILO
	59.13	35.31	48	0.5	29.55			22.8	53.3																							655
SGR5948	1502	897	1219	13	751	3	12 (18 X 26)	578	1353	27.64	12.0	15A	R290	CONDENSATE PAN	317 KILO	NEMA 5-15P	4.0 A	15	R449A	CONDENSATE PAN	4500	297 KILO										
	77.13	35.31	42	0.5	38.55			22.8	71.3																							725
	1959	897	1067	13	979			578	1810																							329 KILO
SGR7742	77.13	35.31	48	0.5	38.55	2	12(18" X 26")	22.8	71.3	29.09	16.0	20A	R290	CONDENSATE PAN	770	NEMA 5-20P	5.0 A	15	R449A	CONDENSATE PAN	6900	725										
	1959	897	1067	13	979			578	1810																							329 KILO
	77.13	35.31	48	0.5	38.55			22.8	71.3																							835
SGR7748	1959	897	1219	13	979	3	16(18" X 26")	578	1810	36.30	16.0	20A	R290	CONDENSATE PAN	880	NEMA 5-20P	5.0 A	15	R449A	CONDENSATE PAN	6900	835										
	36.13	35.31	48	0.5	5.28			22.8	30.3																							184 KILO
	918	897	1067	13	134			578	768																							480

- If a GFCI circuit is required, a GFCI Breaker MUST be used instead of GFCI receptacle.
- Refrigerated cases are designed to operate in a maximum of 75°F (24°C) ambient and 55% relative humidity.
- Due to continuing engineering improvements, specifications are subject to change without notice.



The Signature of Quality®

FEDERAL INDUSTRIES

A Standex Company

215 Federal Avenue Belleville, Wisconsin 53508-9201

Phone: 800-356-4206

Fax: 608-424-3234

Email: Geninfo@Federalind.com

Website: Federalind.com