



The Signature of Quality

FEDERAL INDUSTRIES

A Standex Company
215 Federal Avenue
Belleville, WI 53508-9201

Phone: 800-356-4206
Fax: 608-424-3234
Email: geninfo@federalind.com
Website: www.federalind.com

Project Name: _____

Item #: _____

Model #: _____ Qty: _____

Approval: _____

AIA#

SIS#

STRAIGHT GLASS HIGH VOLUME REFRIGERATED BAKERY CASE

MODEL	DIMENSIONS (Includes End Panels)
<input type="checkbox"/> SGR3642	36.13 x 35.31 x 42 (in) 918 x 897 x 1067 (mm)
<input type="checkbox"/> SGR5042	50.13 x 35.31 x 42 (in) 1273 x 897 x 1067 (mm)
<input type="checkbox"/> SGR5942	59.13 x 35.31 x 42 (in) 1502 x 897 x 1067 (mm)
<input type="checkbox"/> SGR7742	77.13 x 35.31 x 42 (in) 1959 x 897 x 1067 (mm)

MODEL	DIMENSIONS (Includes End Panels)
<input type="checkbox"/> SGR3648	36.13 x 35.31 x 48 (in) 918 x 897 x 1219 (mm)
<input type="checkbox"/> SGR5048	50.13 x 35.31 x 48 (in) 1273 x 897 x 1219 (mm)
<input type="checkbox"/> SGR5948	59.13 x 35.31 x 48 (in) 1502 x 897 x 1219 (mm)
<input type="checkbox"/> SGR7748	77.13 x 35.31 x 48 (in) 1959 x 897 x 1219 (mm)



SGR5042 Shown



SGR5948 Shown

Display more product and serve more customers with presentation and value in mind. Designed for continuous case line-ups without middle end glass.

OPTIONAL ACCESSORIES

- Special Base Finish
- Glass Shelves
- Rear Wrapping Board
- Casters/Cord & Plug Included (Self-Contained Models Only)
- Remote Condensing Unit (EEV Included)
- Reflective Ends
- White or Mirrored Interior Ends with Laminated Exterior
- Reflective Rear Doors
- Legs
- Cord & Plug
- Top Cutting Board, White
- Package Shelf
- Light Below Package Shelf
- Black, Gold, or Chrome Wire Shelves
- Front Glass and Rear Door Locks
- Joining Kit for Continuous Line-ups

STANDARD FEATURES

Model Features

- Tempered thermopane tilt-out front glass for easy cleaning. Front glass is sloped for high visual product display.
- Tempered thermopane glass top, ends, and doors.
- Removable sliding rear doors, shelf lights, shelf supports, and shelves.
- Steel base construction with a choice of six standard laminates on base. Other finishes optional.
- Removable, scratch-resistant, rustproof white display deck.
- Easily accessible light switch and adjustable temperature control.
- Average case temperature of 38° to 40° F is maintained.
- Rear access to the refrigeration system for quick and easy service.
- Designed for continuous line-ups.
- Black trim. Others optional
- Adjustable Leg Levelers

Refrigeration

- Condensate evaporator provided for a totally self-contained system.
- Oversized coil and low-velocity fan system maintains high humidity and product freshness.
- Easy clean, rustproof insulated evaporator coil compartment.
- Condenser air filter on self-contained units.
- Thermometer.
- R290 Refrigerant

Shelving

- Adjustable white wire shelves. Shelves are adjustable up and down and can also be tilted in three positions. 48" models have three tiers of shelves; 42" models have two tiers of shelves.

Lighting

- LED top light and shelf lights.

Agency Approvals

- UL Safety and UL Sanitation listed
- DOE 2017 Compliant



WARRANTY*
One year Parts and Labor
2nd thru 5th year part
only service compressor
(U.S.A and Canada)

Note: Information is subject to change at any time.
Visit www.federalind.com for the most current specs.

Revised 5/6/2026

AIA#

STRAIGHT GLASS HIGH VOLUME REFRIGERATED BAKERY CASE

SIS#

Product Specifications

Intended Environment: Type I - Designed to operate in maximum ambient conditions of 75°F (24°C) and 55% relative humidity unless noted otherwise in system information below.

Zone	Intended Product To Be Displayed	Avg Prod Temp °F/°C
All	Packaged Refrigerated Products	38°F / (3.3°C)

DIMENSION: xx"/(mm)

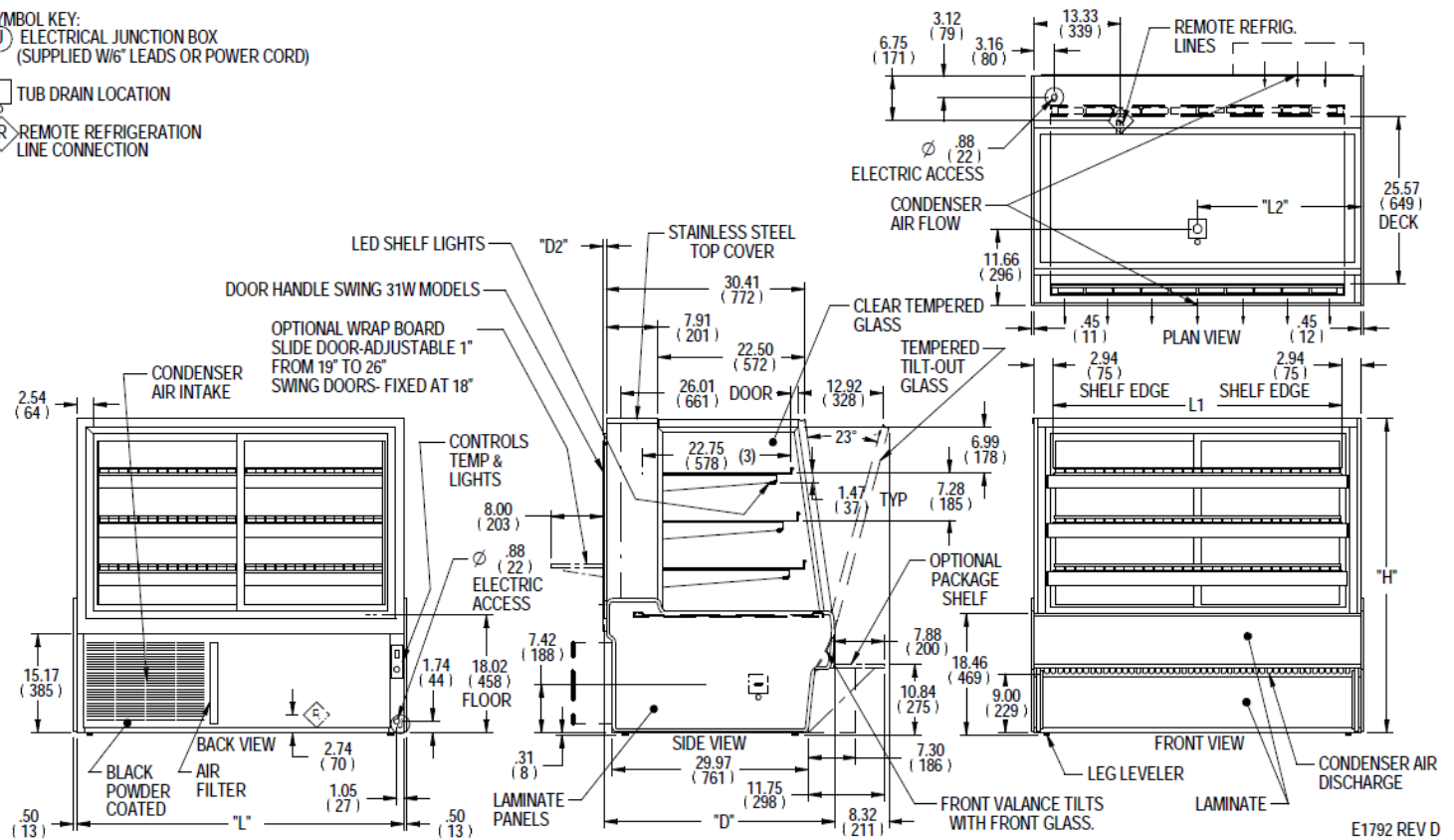
DIMENSION TOLERANCE +/- 0.25 (6.4)

SYMBOL KEY:

Ⓝ ELECTRICAL JUNCTION BOX
(SUPPLIED W/6" LEADS OR POWER CORD)

□ TUB DRAIN LOCATION

Ⓜ REMOTE REFRIGERATION
LINE CONNECTION



E1792 REV D

MODEL	DIMENSION						DOOR DEPTH		TUB DRAIN		SHELVING		INTERIOR VOLUME CU FT	PERMANENT CONNECT 2-WIRE + GROUND 120/60/1		SELF CONTAINED				REMOTE							
	L		D		H		D2		L2		# OF TIERS	CAPACITY (BAKERY PANS)		D	L1	AMPS	MAX FUSE SIZE	REFRIGERANT	CONDENSATE REMOVAL	SHIP WEIGHT KILO	OPTIONAL NEMA CORD & PLUG 2-WIRE + GROUND 120/60/1	AMPS	MAX FUSE SIZE	REFRIGERANT	CONDENSATE REMOVAL	BTU'S @+20°	SHIP WEIGHT LBS
	mm	in	mm	in	mm	in	mm	in	mm	in																	
SGR3642	36.13	35.31	42	0.5	5.28	2	3 (18"X26") & 3 (9"X26")	22.8	30.3	13.29	12.00	15A	R290	CONDENSATE PAN	440	NEMA 5-15P	N/A	N/A	N/A	N/A	N/A	N/A	N/A	N/A	N/A	N/A	N/A
	918	897	1067	13	134	3	4 (18"X26") & 4 (9"X26")	578	768	16.58	12.0	15A	R290	CONDENSATE PAN	515	NEMA 5-15P	N/A	N/A	N/A	N/A	N/A	N/A	N/A	N/A	N/A	N/A	
SGR5042	50.13	35.31	42	0.5	25.05	2	6 (18"X26") & 3 (9"X26")	22.8	44.3	18.68	12.0	15A	R290	CONDENSATE PAN	575	NEMA 5-15P	5.0 A	15	R454c	CONDENSATE PUMP	4300	540	245	580			
	1273	897	1067	13	636	3	8 (18"X26") & 4 (9"X26")	578	1124	23.31	12.0	15A	R290	CONDENSATE PAN	620	NEMA 5-15P	5.0 A	15	R454c	CONDENSATE PUMP	4300	580	263	615			
SGR5048	50.13	35.31	48	0.5	25.05	2	6 (18"X26") & 3 (9"X26")	22.8	44.3	18.68	12.0	15A	R290	CONDENSATE PAN	575	NEMA 5-15P	5.0 A	15	R454c	CONDENSATE PUMP	4300	540	245	580			
	1273	897	1219	13	636	3	4 (9"X26")	578	1124	23.31	12.0	15A	R290	CONDENSATE PAN	281 KILO	NEMA 5-15P	5.0 A	15	R454c	CONDENSATE PUMP	4300	263	615				
SGR5942	59.13	35.31	42	0.5	29.55	2	9 (18 X 26)	22.8	53.3	22.15	12.0	15A	R290	CONDENSATE PAN	655	NEMA 5-15P	5.0 A	15	R454c	CONDENSATE PUMP	4500	615	279	655			
	1502	897	1067	13	751	3	12 (18 X 26)	578	1353	27.64	12.0	15A	R290	CONDENSATE PAN	700	NEMA 5-15P	5.0 A	15	R454c	CONDENSATE PUMP	4500	655	297	725			
SGR5948	59.13	35.31	48	0.5	29.55	2	9 (18 X 26)	22.8	53.3	22.15	12.0	15A	R290	CONDENSATE PAN	655	NEMA 5-15P	5.0 A	15	R454c	CONDENSATE PUMP	4500	615	279	655			
	1502	897	1219	13	751	3	12 (18 X 26)	578	1353	27.64	12.0	15A	R290	CONDENSATE PAN	317 KILO	NEMA 5-15P	5.0 A	15	R454c	CONDENSATE PUMP	4500	297	725				
SGR7742	77.13	35.31	42	0.5	38.55	2	12(18" X 26")	22.8	71.3	29.09	16.0	20A	R290	CONDENSATE PAN	770	NEMA 5-20P	5.4 A	15	R454c	CONDENSATE PUMP	6900	725	329	835			
	1959	897	1067	13	979	3	16(18" X 26")	578	1810	36.30	16.0	20A	R290	CONDENSATE PAN	349 KILO	NEMA 5-20P	5.4 A	15	R454c	CONDENSATE PUMP	6900	329	835				
SGR7748	77.13	35.31	48	0.5	38.55	2	12(18" X 26")	22.8	71.3	29.09	16.0	20A	R290	CONDENSATE PAN	770	NEMA 5-20P	5.4 A	15	R454c	CONDENSATE PUMP	6900	725	329	835			
	1959	897	1219	13	979	3	16(18" X 26")	578	1810	36.30	16.0	20A	R290	CONDENSATE PAN	880	NEMA 5-20P	5.4 A	15	R454c	CONDENSATE PUMP	6900	835	379				

CORD AND PLUG NOT AVAILABLE ON REMOTES

- If a GFCI circuit is required, a GFCI Breaker MUST be used instead of GFCI receptacle.
- Refrigerated cases are designed to operate in a maximum of 75°F (24°C) ambient and 55% relative humidity.
- Due to continuing engineering improvements, specifications are subject to change without notice.



The Signature of Quality®

FEDERAL INDUSTRIES

A Standex Company

215 Federal Avenue Belleville, Wisconsin 53508-9201

Phone: 800-356-4206

Fax: 608-424-3234

Email: Geninfo@Federalind.com

Website: Federalind.com