



The Signature of Quality

FEDERAL INDUSTRIES

A Standex Company

215 Federal Avenue Belleville Wisconsin 53508-9201

Phone: 800-356-4206

Fax: 608-424-3234

Email: Geninfo@Federalind.com

Website: Federalind.com

Project Name: _____

Item #: _____

Model #: _____ Qty: _____

Approval: _____

AIA #

SIS #

Italian Glass Non-Refrigerated Self-Serve 26" Display Case

Designed for customers looking for a rich, up-scale Italian styling for maximum visual appeal that will drive product sales.



Model ITDSS4834-B18 shown with optional special base laminate

MODEL	DIMENSIONS <small>(Includes End Panels)</small>
<input type="checkbox"/> ITDSS3626-B18	36 x 33 x 44 (in) 914 x 838 x 1118 (mm)
<input type="checkbox"/> ITDSS4826-B18	48 x 33 x 44 (in) 1219 x 838 x 1118 (mm)
<input type="checkbox"/> ITDSS6026-B18	60 x 33 x 44 (in) 1524 x 838 x 1118 (mm)

STANDARD FEATURES

Model Features

- Powder coated steel base construction with a choice of standard laminates
- Tempered thermo-pane glass construction
- Removable, sliding glass front doors
- Removable, sliding glass rear doors
- Stainless steel interior
- Adjustable leg levelers
- Cord & plug

Shelving

- Two adjustable tempered glass shelves are adjustable up and down and can be tilted in two positions (0°/ 5° angle).

Lighting

- 3500K LED top light and shelf lights
- DLC Certified, IP66 rated

Agency Approvals

- UL, C-UL, and UL Sanitation Listed to NSF-2

OPTIONAL ACCESSORIES

- Premium exterior laminate
- Stainless steel exterior
- Stainless steel shelving
- 17" Stainless steel or glass shelving
- Reflective ends
- Reflective doors
- 4"/102mm Casters
- Recessed casters
- 6"/152mm Legs with or without skirt
- Rear wrap board
- Joining kit for continuous line ups
- Self-closing front doors



WARRANTY* One year Parts and Labor 2nd thru 5th year part only service compressor (U.S.A. and Canada)

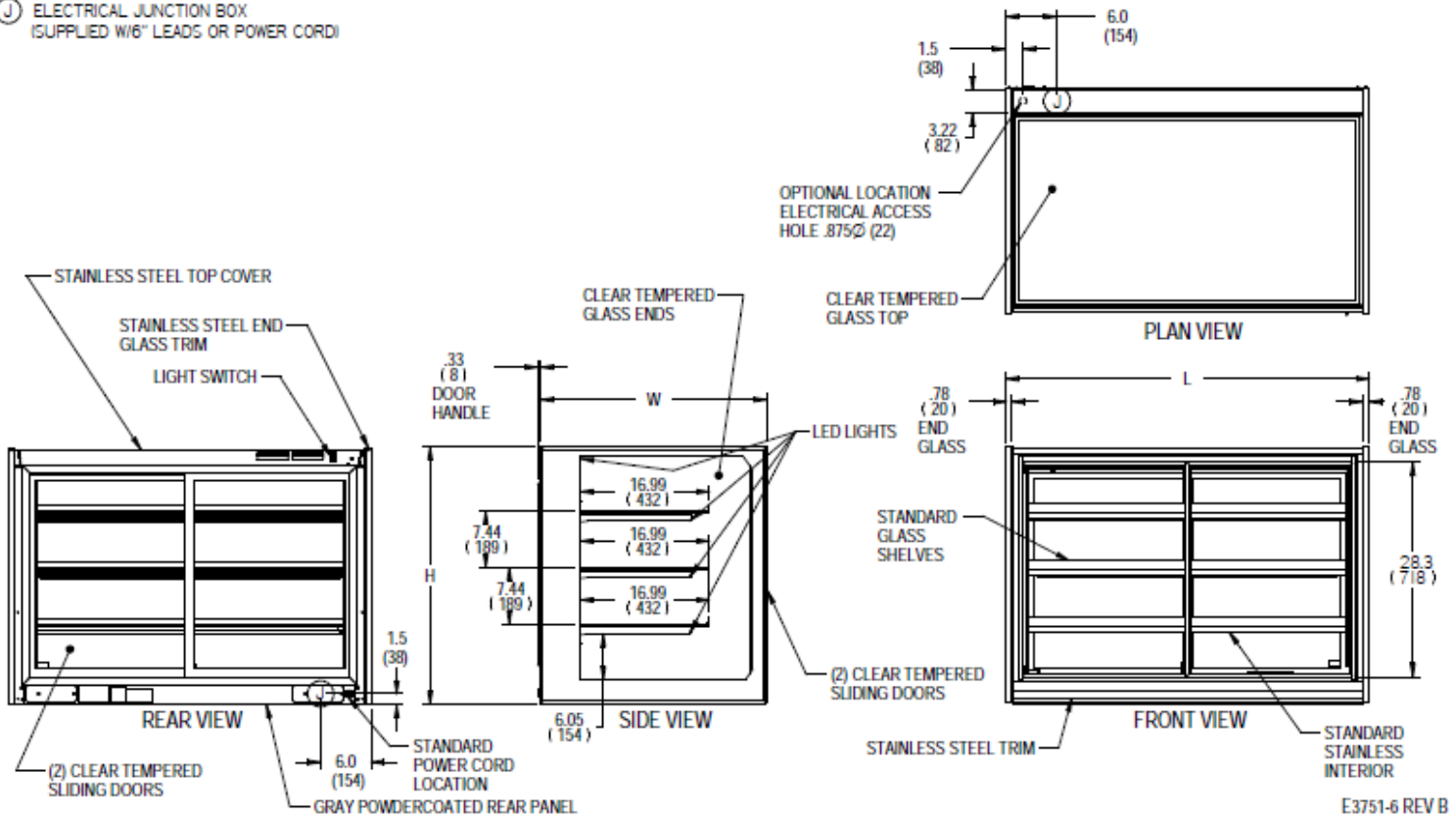
Note: Information is subject to change at any time. Visit www.federalind.com For the most current specs.

AIA #	Italian Glass Non-Refrigerated Self-Serve 26" Display Case
SIS #	Product Specifications

Zone	Intended product to be displayed	Avg prod temp °F / °C
All	Packaged non refrigerated products	N/A

DIMENSION: xx"/(mm)

SYMBOL KEY:
 ELECTRICAL JUNCTION BOX
 (SUPPLIED W/6" LEADS OR POWER CORD)



E3751-6 REV B

MODEL	DIMENSION					# OF TIERS	SHELVING				DISPLAY AREA SQ. IN	INTERIOR VOLUME CU FT	PERMANENT CONNECT		OPTIONAL NEMA CORD & PLUG	SHIP WEIGHT
	L	D1	D2	H1	H2		DT	DM	DB	L			2-WIRE + GROUND			
	in	in	in	in	in		in	in	in	in			120/60/1			
	mm	mm	mm	mm	mm		mm	mm	mm	mm			AMPS	MAX FUSE SIZE		
ITDSS3634-B18	36.00	30.00	30.75	34.00	52.00	3	11	14	17	30.88	1980 SQ. IN	15.5 CU FT	1.5	15	NEMA 5-15P	575 LBS
	914	762	781	864	1321		279	356	432	784						261 KILO
ITDSS4834-B18	48.00	30.00	30.75	34.00	52.00	3	11	14	17	42.88	2720 SQ. IN	21 CU FT	1.5	15	NEMA 5-15P	690 LBS
	1219	762	781	864	1321		279	356	432	1089						313 KILO
ITDSS6034-B18	60.00	30.00	30.75	34.00	52.00	3	11	14	17	54.88	3470 SQ. IN	26 CU FT	1.5	15	NEMA 5-15P	800 LBS
	1524	762	781	864	1321		279	356	432	1394						363 KILO

• Due to continuing engineering improvements, specifications are subject to change without notice.



FEDERAL INDUSTRIES
 A Standex Company
 215 Federal Avenue, Belleville, Wisconsin 53508-9201

Phone: 800-356-4206
Fax: 608-424-3234
Email: Geninfo@Federalind.com
Website: Federalind.com