



The Signature of Quality

FEDERAL INDUSTRIES

A Standex Company

215 Federal Avenue Belleville
Wisconsin 53508-9201

Phone: 800-356-4206

Fax: 608-424-3234

Email: Geninfo@Federalind.com

Website: Federalind.com

Project Name: _____

Item #: _____

Model #: _____ Qty: _____

Approval: _____

AIA #

SIS #

Italian Glass Refrigerated Display Case

Ideal for both Bakery & Deli Merchandising

Designed for customers looking for rich, up-scale Italian styling for maximum visual appeal that will drive product sales.



Model ITR4834-B18
Shown with optional laminate

OPTIONAL ACCESSORIES

- ☐ Special Base Laminates
- ☐ Condensate Pump for self-contained cases
- ☐ Condensate pan for remote cases
- ☐ Cord & Plug (SC models only)
- ☐ Stainless Steel Shelving
- ☐ Reflective Ends
- ☐ 4"/102mm Casters
- ☐ Recessed Casters
- ☐ 6"/152mm Legs With or Without Skirt
- ☐ Rear Wrap board
- ☐ Remote Condensing Unit (EEV Included)
- ☐ Joining Kit for Continuous Line-Ups
- ☐ Reflective Rear Doors
- ☐ Front Air Intake & Discharge

MODEL

DIMENSIONS

(Includes End Panels)

☐ ITR3626-B18

36 x 30.75 x 44 (in)
914 x 781 x 1118 (mm)

☐ ITR4826-B18

48 x 30.75 x 44 (in)
1219 x 781 x 1118 (mm)

☐ ITR6026-B18

60 x 30.75 x 44 (in)
1524 x 781 x 1118 (mm)

STANDARD FEATURES

Model Features

- Powder coated steel base construction with a choice of six standard laminates
- Stainless steel interior
- All tempered thermo-pane glass construction
- Tilt out front glass for easy cleaning
- Removable sliding glass rear doors
- Adjustable Leg Levelers
- Rear air intake and discharge.

Refrigeration

- Electronic temperature control with demand defrost
- PTC Condensate evaporator provided for a totally self-contained system.
- Condensate pump standard with remote cases
- Easily accessible light switch, power switch, and electronic temperature control
- Average product temperature of 38°F (3.3°C) to 40°F (4.4°C)
- R290 Refrigerant

Shelving

- Adjustable tempered glass shelves. Shelves are adjustable up and down and can be tilted in two positions (0°/5° angle)
- Two tiers of shelves

Lighting

- 3500K LED top light and shelf lights
- DLC Certified, IP66 rated

Agency Approvals

- UL, C-UL, and UL Sanitation Listed to NSF-7, Type I conditions
- DOE 2017 Compliant



Note: Information is subject to change at any time. Visit www.federalind.com For the most current specs.


Italian Glass Refrigerated Display Case

Product Specifications

Intended Environment: Type I - Designed to operate in maximum ambient conditions of 75°F (24°C) and 55% relative humidity unless noted otherwise in system information below.

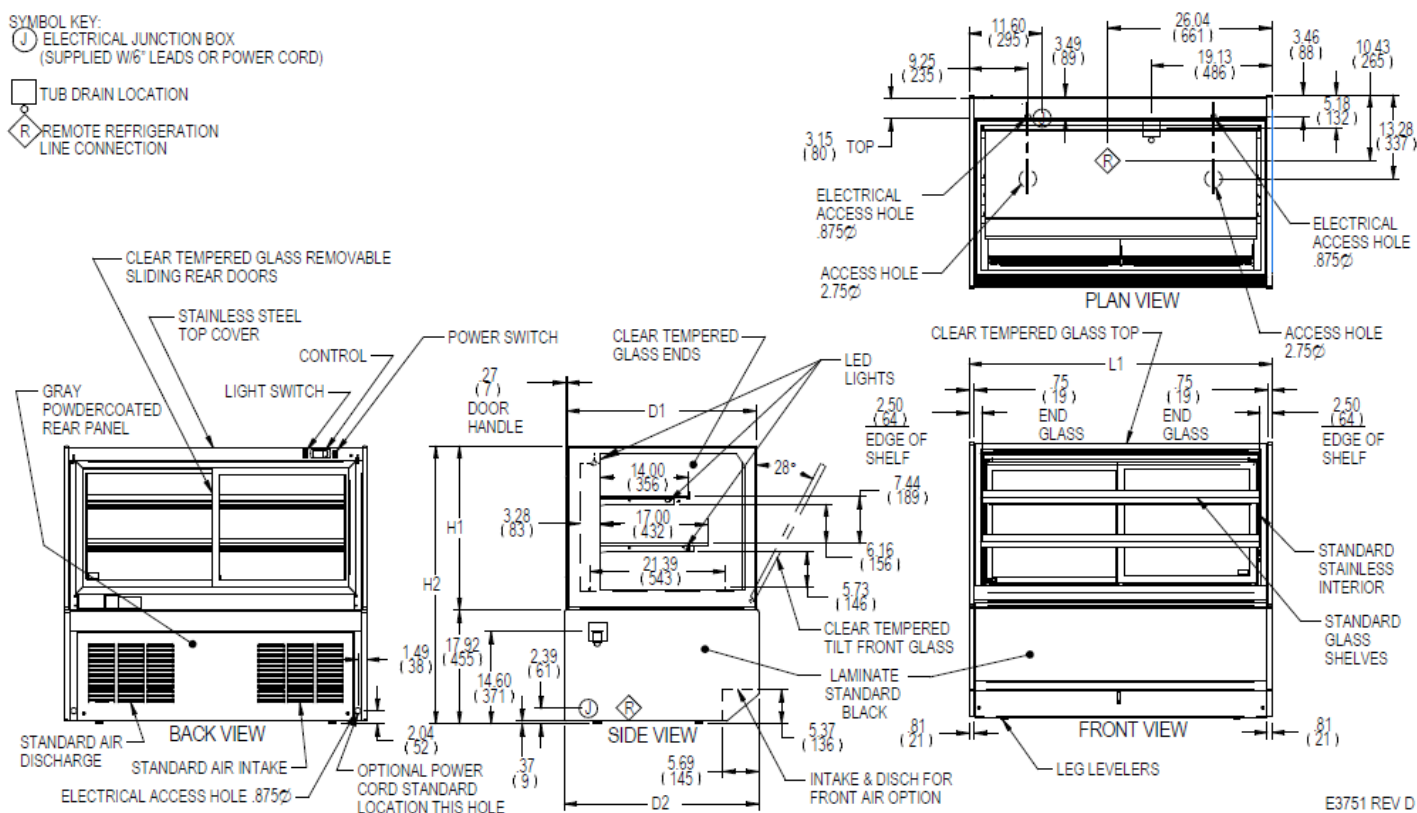
Zone	Intended product to be displayed	Avg prod temp °F / °C
All	Unpackaged Refrigerated Products / All Foods & Beverages	38°F / (3.3°C)

DIMENSION: xx"/(mm)

SYMBOL KEY:
 ELECTRICAL JUNCTION BOX
 (SUPPLIED W/6" LEADS OR POWER CORD)

☐ TUB DRAIN LOCATION

R REMOTE REFRIGERATION
LINE CONNECTION

[illegible]

- Refrigerated cases are designed to operate in a maximum of 80°F [27°C] ambient and 55% relative humidity.
- Due to continuing engineering improvements, specifications are subject to change without notice.
- Packaged food products placed in case must be pre-chilled before placing in case.



The Signature of Quality.

FEDERAL INDUSTRIES

A Standex Company

215 Federal Avenue, Belleville, Wisconsin 53508-9201

Phone: 800-356-4206

Fax: 608-424-3234

Email: Geninfo@Federalind.com

Website: Federalind.com