



The Signature of Quality

FEDERAL INDUSTRIES

A Standex Company

215 Federal Avenue Belleville
Wisconsin 53508-9201

Phone: 800-356-4206

Fax: 608-424-3234

Email: Geninfo@Federalind.com

Website: Federalind.com

Project Name: _____

Item #: _____

Model #: _____ Qty: _____

Approval: _____

AIA #

SIS #

Italian Glass Refrigerated Self-Serve Merchandiser

Designed for customers looking for a rich, up-scale Italian styling for maximum visual appeal that will drive product sales.



Model ITRSS4834-B18
Shown with optional laminate

| MODEL | DIMENSIONS (Includes End Panels) |
|--|---|
| <input type="checkbox"/> ITRSS3626-B18 | 36 x 33 x 44 (in) 914 x 838 x 1118 (mm) |
| <input type="checkbox"/> ITRSS4826-B18 | 48 x 33 x 44 (in) 1219 x 838 x 1118 (mm) |
| <input type="checkbox"/> ITRSS6026-B18 | 60 x 33 x 44 (in) 1524 x 838 x 1118 (mm) |
| <input type="checkbox"/> ITRSS3634-B18 | 36 x 33 x 52 (in) 914 x 838 x 1321 (mm) |
| <input type="checkbox"/> ITRSS4834-B18 | 48 x 33 x 52 (in) 1219 x 838 x 1321 (mm) |
| <input type="checkbox"/> ITRSS6034-B18 | 60 x 33 x 52 (in) 1524 x 838 x 1321 (mm) |

STANDARD FEATURES

Model Features

- Powder coated steel base construction with a choice of six standard laminates
- Stainless steel interior
- All tempered thermo-pane glass construction
- Removable tempered sliding glass rear doors
- Adjustable Leg Levelers
- Rear air intake and discharge
- Energy Saving Night Curtain

Refrigeration

- Electronic temperature control with on demand defrost
- PTC Condensate evaporator provided for a totally self-contained system
- Condensate pump standard on remote cases
- Easily accessible light switch, power switch, and electronic temperature control
- Average product temperature of 38°F (3.3°C) to 40°F (4.4°C)
- R513a Refrigerant (R449a in Remote Applications)
- Adjustable tempered glass shelves. Shelves are adjustable up and down and can be tilted in two positions (0°/5° angle). 4" (864mm) models have three tiers of shelves; 26" (660) models have two tiers of shelves.

Lighting

- 3500K LED top light and shelf lights
- DLC Certified, IP66 rated

Agency Approvals

- UL, C-UL, and UL Sanitation Listed to NSF-7, Type I conditions
- DOE 2017 Compliant

OPTIONAL ACCESSORIES

- | | |
|--|---|
| <input type="checkbox"/> Special Base Laminates | <input type="checkbox"/> Front Air Intake & Discharge |
| <input type="checkbox"/> Condensate Pump for self-contained models | <input type="checkbox"/> 4"/102mm Casters |
| <input type="checkbox"/> Condensate Pan for remote models | <input type="checkbox"/> Recessed Casters |
| <input type="checkbox"/> Cord & Plug [6'/1829mm] [SC Models only] | <input type="checkbox"/> 6"/152mm Legs with or without skirt |
| <input type="checkbox"/> Stainless Steel Shelving | <input type="checkbox"/> Rear Wrap Board |
| <input type="checkbox"/> Reflective Ends | <input type="checkbox"/> Remote Condensing Unit (R449a Refrigerant, EEV Included) |
| | <input type="checkbox"/> Joining Kit for Continuous Line Ups |



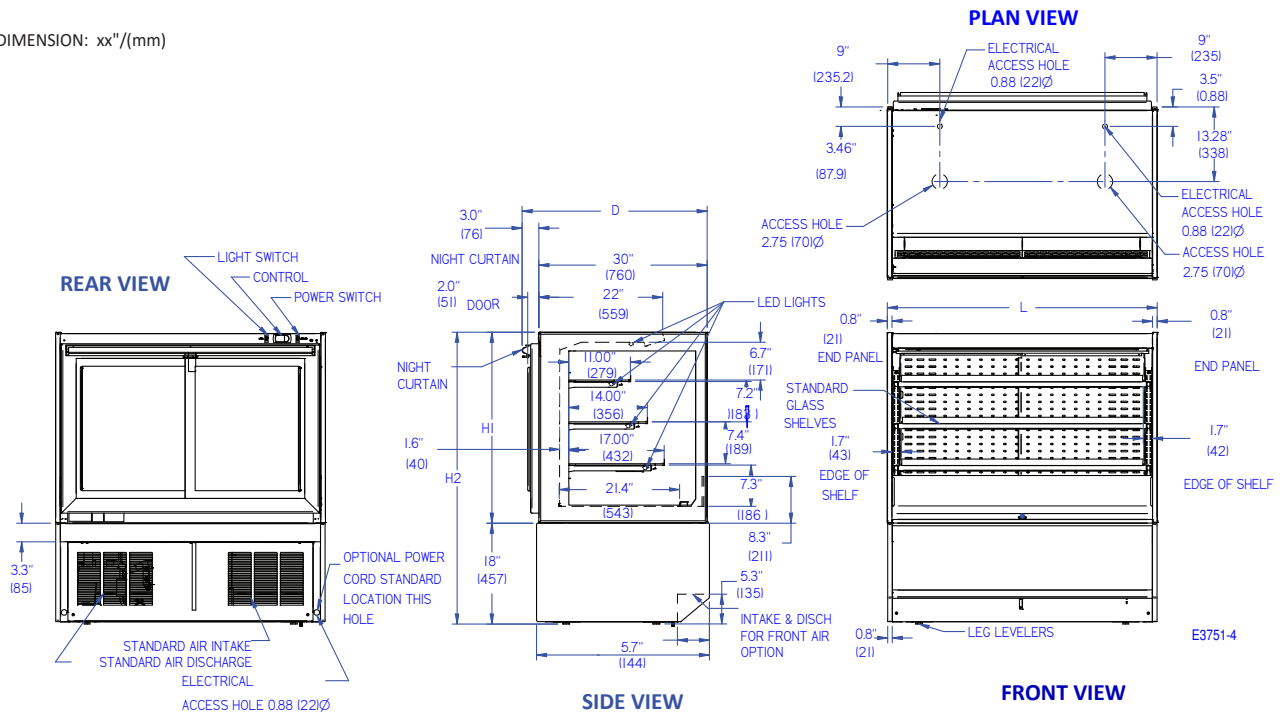
Note: Information is subject to change at any time. Visit www.federalind.com For the most current specs.

| | |
|-------|--|
| AIA # | Italian Glass Refrigerated Self-Serve Merchandiser |
| SIS # | Product Specifications |

Intended Environment: Type I - Designed to operate in ambient conditions of 75°F [24°C] and 55% relative humidity unless noted otherwise in system information below.

| Zone | Intended product to be displayed | Avg prod temp °F / °C |
|------|----------------------------------|-----------------------|
| All | Packaged refrigerated products | 38°F / (3.3°C) |

DIMENSION: xx"/(mm)



DIMENSION TOLERANCE +/- 0.19 (4.8)

| MODEL | DIMENSIONS | | | | | SHELVES | SHIPPING WHT | | SELF CONTAINED Permanently Connected | | OPTIONAL NEMA PLUG | REMOTE | | BTU @ 20°F |
|---------------|------------|-----|-----|------|-------|---------|--------------|------|--------------------------------------|-------------|--------------------|----------|-------------|------------|
| | L | D | H1 | H2 | UNITS | | LBS | KILO | VOLTAGE | AMPS | CONFIG (SC) | VOLTAGE | AMPS | |
| ITRSS3626-B18 | 36 | 33 | 26 | 44 | in. | 2 | 520 | 236 | 120/60/1 | MAX FUSE 20 | NEMA 5-20 | 120/60/1 | MAX FUSE 15 | 3900 |
| | 914 | 838 | 661 | 1118 | mm. | | | | | | | | | |
| ITRSS4826-B18 | 48 | 33 | 26 | 44 | in. | 2 | 635 | 288 | 120/60/1 | MAX FUSE 25 | NEMA 5-20 | 120/60/1 | MAX FUSE 15 | 4700 |
| | 1219 | 838 | 661 | 1118 | mm. | | | | | | | | | |
| ITRSS6026-B18 | 60 | 33 | 26 | 44 | in. | 2 | 760 | 345 | 208-240/60/1 | MAX FUSE 20 | NEMA 6-15 | 120/60/1 | MAX FUSE 15 | 5750 |
| | 1524 | 838 | 661 | 1118 | mm. | | | | | | | | | |
| ITRSS3634-B18 | 36 | 33 | 34 | 52 | in. | 3 | 560 | 254 | 120/60/1 | MAX FUSE 20 | NEMA 5-20 | 120/60/1 | MAX FUSE 15 | 3900 |
| | 914 | 838 | 864 | 1321 | mm. | | | | | | | | | |
| ITRSS4834-B18 | 48 | 33 | 34 | 52 | in. | 3 | 670 | 304 | 120/60/1 | MAX FUSE 25 | NEMA 5-20 | 120/60/1 | MAX FUSE 15 | 4700 |
| | 1219 | 838 | 864 | 1321 | mm. | | | | | | | | | |
| ITRSS6034-B18 | 60 | 33 | 34 | 52 | in. | 3 | 795 | 361 | 208-240/60/1 | MAX FUSE 20 | NEMA 6-15 | 120/60/1 | MAX FUSE 15 | 5750 |
| | 1524 | 838 | 864 | 1321 | mm. | | | | | | | | | |

- Refrigerated cases are designed to operate in a maximum of 75°F (24°C) ambient and 55% relative humidity.
- Due to continuing engineering improvements, specifications are subject to change without notice.
- Package food products placed in case must be pre-chilled to 40°F (4.4°C) degrees before placing in case.



FEDERAL INDUSTRIES
 A Standex Company
 215 Federal Avenue, Belleville, Wisconsin 53508-9201

Phone: 800-356-4206
Fax: 608-424-3234
Email: Geninfo@Federalind.com
Website: Federalind.com