



The Signature of Quality

FEDERAL INDUSTRIES

A Standex Company

215 Federal Avenue Belleville
Wisconsin 53508-9201

Phone: 800-356-4206

Fax: 608-424-3234

Email: Geninfo@Federalind.com

Website: Federalind.com

Project Name: _____

AIA #

Item #: _____

Model #: _____ Qty: _____

SIS #

Approval: _____

Italian Glass Refrigerated Self-Serve Merchandiser (Drop-In)

Designed for customers looking for rich, up-scale Italian styling for maximum visual appeal that will drive product sales.



Model ITRSS3634 Shown
*Counter Not Provided

MODEL	DIMENSIONS <small>(Includes End Panels)</small>
<input type="checkbox"/> ITRSS3626	36 x 33 x 42.7 (in) 914 x 838 x 1085 (mm)
<input type="checkbox"/> ITRSS4826	48 x 33 x 42.7 (in) 1219 x 838 x 1085 (mm)
<input type="checkbox"/> ITRSS6026	60 x 33 x 42.7 (in) 1524 x 838 x 1085 (mm)
<input type="checkbox"/> ITRSS3634	36 x 33 x 50.7 (in) 914 x 838 x 1288 (mm)
<input type="checkbox"/> ITRSS4834	48 x 33 x 50.7 (in) 1219 x 838 x 1288 (mm)
<input type="checkbox"/> ITRSS6034	60 x 33 x 50.7 (in) 1524 x 838 x 1288 (mm)

STANDARD FEATURES

Model Features

- Stainless steel interior
- All tempered thermo-pane glass construction
- Removable sliding glass rear doors

Refrigeration

- Electronic temperature control with on demand defrost
- PTC Condensate evaporator provided for a totally self-contained system
- Condensate pump standard on remote cases
- Easily accessible light switch, power switch, and electronic temperature control
- Average product temperature of 38°F (3.3°C) to 40°F (4.4°C)
- Proper ventilation of counter is required for proper performance
- Rear air intake and discharge
- Energy saving Night Curtain
- Starting January 1, 2025, R513A refrigerant will be replaced by R290

Shelving

- Adjustable tempered glass shelves. Shelves are adjustable up and down and can be tilted in two positions (0°/ 5° angle). 34" (864mm) models have three tiers of shelves; 26"

Lighting

- 3500K LED top light and shelf lights
- DLC Certified, IP66 rated

Agency Approvals

- UL, C-UL, and UL Sanitation Listed to NSF-7, Type I conditions
- DOE 2017 Compliant

OPTIONAL ACCESSORIES

- | | |
|--------------------------------------------------------------------|-----------------------------------------------------------------------------------------------|
| <input type="checkbox"/> Stainless Steel Shelving | <input type="checkbox"/> Reflective Ends |
| <input type="checkbox"/> Condensate Pump for self-contained models | <input type="checkbox"/> Joining Kit for Continuous Line-ups |
| <input type="checkbox"/> Condensate pan for remote cases | <input type="checkbox"/> Remote Condensing Unit (EEV Included) (R449a in Remote Applications) |
| <input type="checkbox"/> Cord & Plug (SC models only) | |
| <input type="checkbox"/> Reflective Rear Doors | |



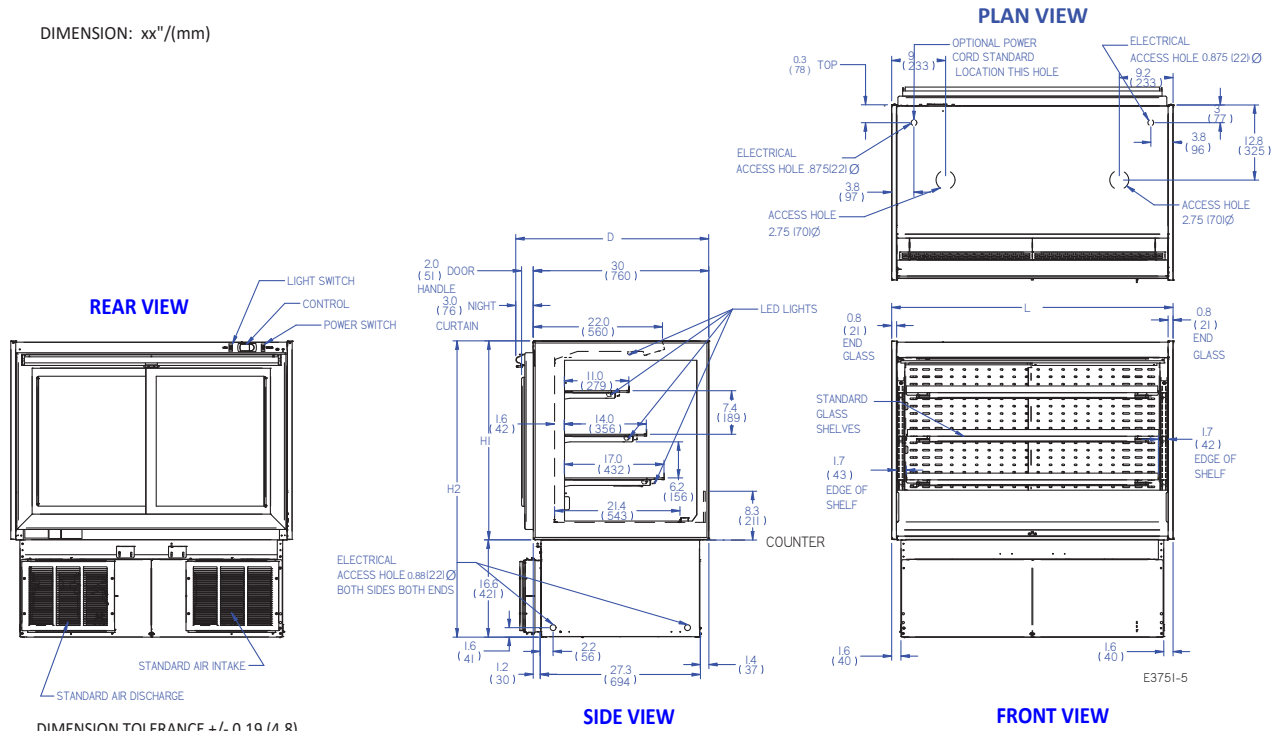
WARRANTY*
One year Parts and Labor
2nd thru 5th year part only
service compressor
(U.S.A. and Canada)

Note: Information is subject to change at any time. Visit www.federalind.com For the most current specs.

AIA #	Italian Glass Refrigerated Self-Serve Merchandiser (Drop-In)
SIS #	
Product Specifications	

Intended Environment: Type I - Designed to operate in maximum ambient conditions of 75°F (24°C) and 55% relative humidity unless noted otherwise in system information below.		
Zone	Intended product to be displayed	Avg prod temp °F / °C
All	Packaged refrigerated products	38°F / (3.3°C)

DIMENSION: xx"/(mm)



DIMENSION TOLERANCE +/- 0.19 (4.8)

MODEL	DIMENSIONS					SHIPPING WHT		SELF-CONTAINED Permanently Connected			OPTIONAL NEMA PLUG	REMOTE		BTU @ 20°F	COUNTER CUTOUT		
	L	D	H1	H2	UNITS	LBS	KILO	VOLTAGE	AMPS	VOLTAGE		AMPS	L		W	UNITS	
ITRSS3626	36	33	26	42.7	in.	520	236	120/60/1	MAX FUSE 20	NEMA 5-20	120/60/1	MAX FUSE 15	3900	33.4	27.7	in.	
	914	838	661	1085	mm.									848	704	mm.	
ITRSS4826	48	33	26	42.7	in.	635	288	120/60/1	MAX FUSE 25	NEMA 5-20	120/60/1	MAX FUSE 15	4700	45.4	27.7	in.	
	1219	838	661	1085	mm.									1153	704	mm.	
ITRSS6026	60	33	26	42.7	in.	760	345	208-240/60/1	MAX FUSE 20	NEMA 6-15	120/60/1	MAX FUSE 15	5750	57.4	27.7	in.	
	1524	838	661	1085	mm.									1458	704	mm.	
ITRSS3634	36	33	34	50.7	in.	560	254	120/60/1	MAX FUSE 20	NEMA 5-20	120/60/1	MAX FUSE 15	3900	33.4	27.7	in.	
	914	838	864	1288	mm.									848	704	mm.	
ITRSS4834	48	33	34	50.7	in.	670	304	120/60/1	MAX FUSE 25	NEMA 5-20	120/60/1	MAX FUSE 15	4700	45.4	27.7	in.	
	1219	838	864	1288	mm.									1153	704	mm.	
ITRSS6034	60	33	34	50.7	in.	795	361	208-240/60/1	MAX FUSE 20	NEMA 6-15	120/60/1	MAX FUSE 15	5750	57.4	27.7	in.	
	1524	838	864	1288	mm.									1458	704	mm.	

- Refrigerated cases are designed to operate in a maximum of 75°F (24°C) ambient and 55% relative humidity.
- Due to continuing engineering improvements, specifications are subject to change without notice.
- Counter must have adequate ventilation for proper case performance.
- Packaged food products placed in case must be pre-chilled before placing in case.



FEDERAL INDUSTRIES
 A Standex Company
 215 Federal Avenue, Belleville, Wisconsin 53508-9201

Phone: 800-356-4206
Fax: 608-424-3234
Email: Geninfo@Federalind.com
Website: Federalind.com