



The Signature of Quality®

### FEDERAL INDUSTRIES

A Standex Company  
215 Federal Avenue  
Belleville, WI 53508-9201

Phone: 800-356-4206  
Fax: 608-424-3234  
Email: geninfo@federalind.com  
Website: www.federalind.com

Project Name: \_\_\_\_\_

Item #: \_\_\_\_\_

Model #: \_\_\_\_\_ Qty: \_\_\_\_\_

Approval: \_\_\_\_\_

AIA#

SIS#

## SERIES '90 NON-REFRIGERATED BAKERY CASE

Series '90. The ultimate merchandiser with advanced styling for maximum visual appeal. Designed for continuous case line-ups.



MODEL	DIMENSIONS ( Includes End Panels )
<input type="checkbox"/> <b>SN48</b>	48.25 x 37.75 x 48.50 (in) 1226 x 959 x 1232 (mm)
<input type="checkbox"/> <b>SN59</b>	59.25 x 37.75 x 48.50 (in) 1505 x 959 x 1232 (mm)
<input type="checkbox"/> <b>SN77</b>	77.25 x 37.75 x 48.50 (in) 1962 x 959 x 1232 (mm)

### STANDARD FEATURES

#### Model Features

- Adjustable white cantilevered shelves. Shelves are adjustable up and down and can be tilted.
- Lift-up pneumatic, cylinder-assisted, double-curve tempered front glass.
- Adjustable Leg Levelers
- Removable sliding rear doors, shelf lights, shelf supports, and shelves.
- Glass ends and rear doors. Rear doors are sloped for product access.
- Vent system to reduce heat build-up from the lights.
- Base trim: specify white, black, or stainless.
- End glass trim: specify white or black.
- All-welded base construction with a choice of six standard laminates on base. Other color laminates optional.
- Easily accessible control panel with main auxiliary fan and light control.
- Double-bend tempered front glass reduces glare from outside lighting.
- Case height is only 48" high allowing better interaction between the customer and the sales clerk.
- White display deck.

#### Shelving

- Adjustable white cantilevered shelves. Shelves are adjustable up and down and can also be tilted.

#### Lighting

- fluorescent top light and shelf lights. Lights are independently wired.
- DLC Certified, IP66 rated.

#### Agency Approvals

- UL Safety and NSF Listed.
- DOE 2017 Compliant.

### OPTIONAL ACCESSORIES

- Special Base Finish
- Base Trim Specify White, Black, or Stainless
- End Glass Trim Specify White or Black
- Black or Stainless Steel Interior
- Glass, Black, or Chrome Shelves in Lieu of White
- Casters or Legs
- Cord and Plug (Six Foot)
- Front Package Shelf With or Without Light Below
- Reflective End Glass
- Mirrored Interior Ends With Laminated Exterior
- Reflective Rear Doors
- Rear Wrapping Board
- Front Glass and Rear Door Locks
- Top Service Shelf (Stainless Steel or Glass)



**WARRANTY\***  
One year Parts and Labor  
2nd thru 5th year part  
only service compressor  
(U.S.A and Canada)

Note: Information is subject to change at any time. Visit [www.federalind.com](http://www.federalind.com) for the most current specs.

AIA#

# SERIES '90 NON-REFRIGERATED BAKERY CASE

SIS#

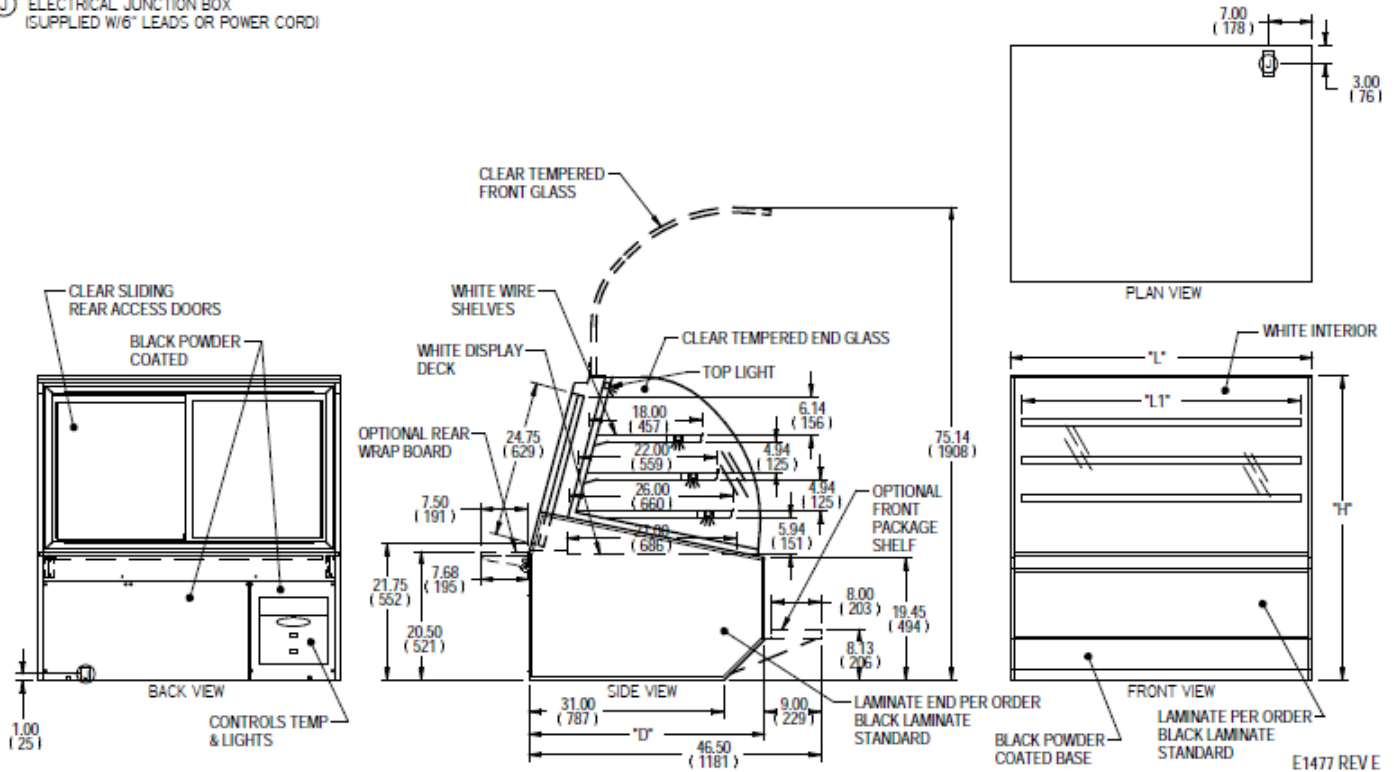
## Product Specifications

DIMENSION: xx"/(mm)

DIMENSION TOLERANCE +/- 0.19 (4.8)

## SYMBOL KEY:

Ⓢ ELECTRICAL JUNCTION BOX  
 (SUPPLIED W/6" LEADS OR POWER CORD)



MODEL	DIMENSION			# OF SHELF TIERS	SHELVES PER TIER	SHELVING				CAPACITY (BAKERY PANS)	INTERIOR VOLUME CU FT	SELF CONTAINED			
	L	D	H			D	D1	D2	L1			PERMANENT CONNECT		OPTIONAL NEMA CORD & PLUG	SHIP WEIGHT
	in	in	in			in	in	in	in			2-WIRE + GROUND	2-WIRE + GROUND		
	mm	mm	mm			mm	mm	mm	mm			AMPS	MAX FUSE SIZE	120/60/1	KILO
SN-48	48.25	37.75	48.50	3	1	18.00	22.00	26.00	44.25	4 (18" X 26"), 8 (12" X 18"), 2 (9" X 26")	20.08	1.5	15	NEMA 5-15P	640 LBS 290 KILO
SN-59	59.25	37.75	48.50	3	1	18.00	22.00	26.00	55.25	6 (18" X 26"), 8 (12" X 18")	24.88	1.5	15	NEMA 5-15P	805 LBS 365 KILO
SN-77	77.25	37.75	48.50	3	1	18.00	22.00	26.00	73.25	8 (18" X 26"), 12 (12" X 18")	32.74	1.5	15	NEMA 5-15P	865 LBS 392 KILO

- If a GFCI circuit is required, a GFCI Breaker Must be used instead of GFCI receptacle.
- Due to continuing engineering improvements, specifications are subject to change without notice.



The Signature of Quality®

**FEDERAL INDUSTRIES**

A Standex Company

215 Federal Avenue Belleville, Wisconsin 53508-9201

Phone: 800-356-4206

Fax: 608-424-3234

Email: Geninfo@Federalind.com

Website: Federalind.com