



*The Signature of Quality®*

## FEDERAL INDUSTRIES

A Standex Company

215 Federal Avenue  
Belleville, WI 53508-9201

Phone: 800-356-4206

Fax: 608-424-3234

Email: [geninfo@federalind.com](mailto:geninfo@federalind.com)

Website: [www.federalind.com](http://www.federalind.com)

Project Name: \_\_\_\_\_

Item #: \_\_\_\_\_

Model #: \_\_\_\_\_ Qty: \_\_\_\_\_

Approval: \_\_\_\_\_

AIA#

SIS#

## HYBRID MERCHANDISER

### SERVICE REFRIGERATED OVER SELF-SERVE REFRIGERATED

Display more product and serve more customers with presentation and value in mind.



### MODEL

### DIMENSIONS

( Includes End Panels )

<input type="checkbox"/> CRR3628/RSS3SC	36.25 x 45.0 x 72.50 (in) 921 x 1143 x 1842 (mm)
<input type="checkbox"/> CRR4828/RSS4SC	48 x 45.0 x 72.50 (in) 1219 x 1143 x 1842 (mm)

## STANDARD FEATURES

### Service Refrigerated Top Display

- Service Refrigerated Top Display
- Two tiers black wire shelves.
- Sliding rear doors.
- Black trim.
- Thermometer
- R290 Refrigerant

### Refrigerated Self-Serve Bottom Display

- Black laminated exterior. Other finishes available.
- Black trim. Silver optional.
- Black interior, glass ends.
- Horizontal LED top and front light.
- Two tiers black metal shelves.
- Cord and plug.
- Thermometer
- R290 Refrigerant

### Lighting

- LED top light and shelf lights.

### Agency Approvals

- UL Safety and UL Sanitation Listed to NSF Type I conditions
- DOE 2017 Compliant

## OPTIONAL ACCESSORIES

### For Top Display

- ☐ Glass Shelves
- ☐ Reflective Ends
- ☐ Reflective Rear Doors

### For Self-Serve Refrigerated Base

- ☐ Energy Saving Night Curtain
- ☐ Silver Trim
- ☐ Special Base Finish
- ☐ Mirrored Interior Ends
- ☐ Security Night Cover
- ☐ Stainless Steel Steps in Lieu of Metal Shelves
- ☐ Reflective End Glass



**WARRANTY\***  
One year Parts and Labor  
2nd thru 5th year part  
only service compressor  
(U.S.A and Canada)

Note: Information is subject to change at any time.  
Visit [www.federalind.com](http://www.federalind.com) for the most current specs.

Revised 1/28/2026

## HYBRID MERCHANDISER

SIS#

## Product Specifications

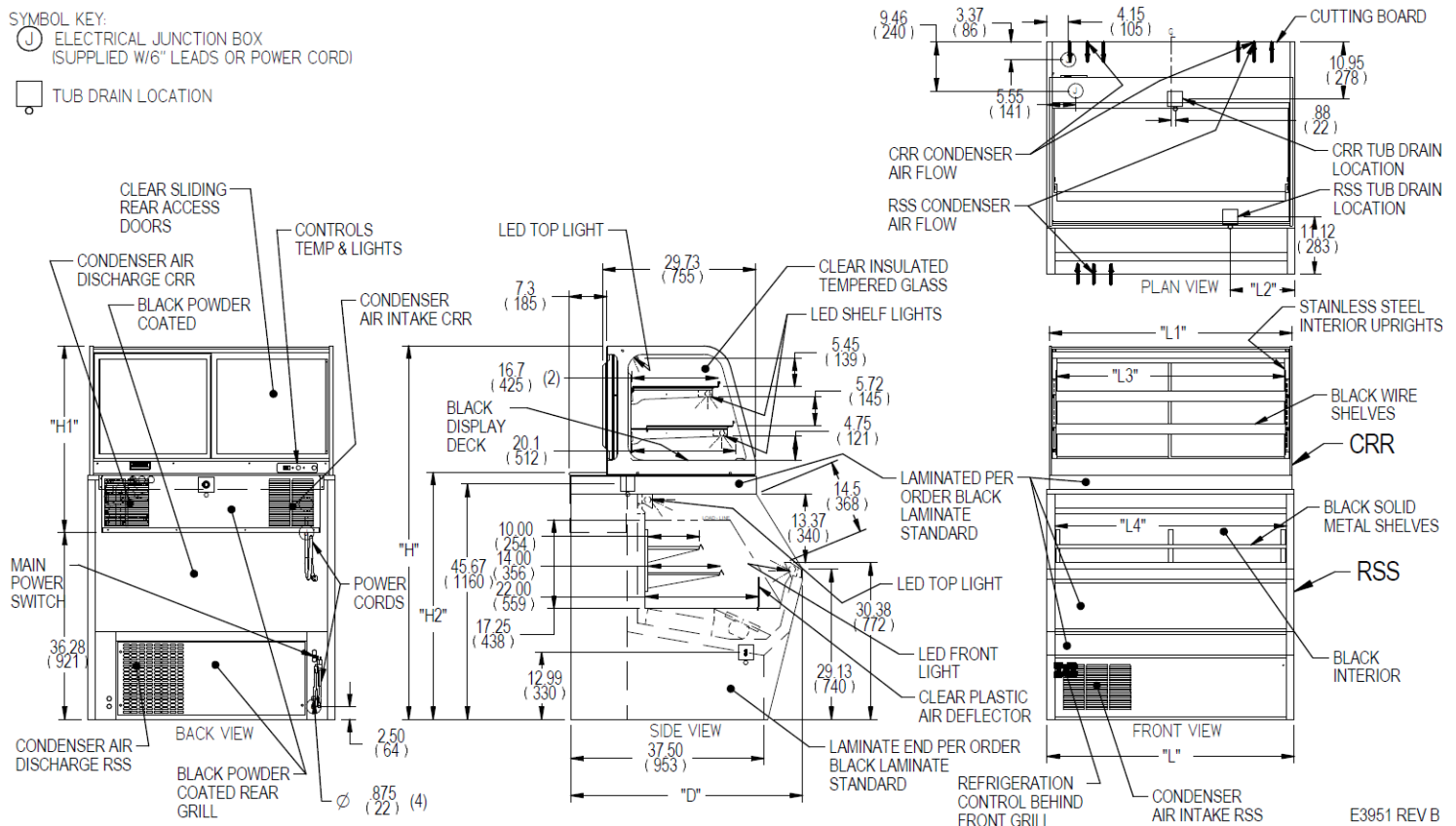
Intended Environment: Type I - Designed to operate in maximum ambient conditions of 75°F (24°C) and 55% relative humidity unless noted otherwise in system information below.

Zone	Intended Product To Be Displayed	Avg Prod Temp °F/°C
All	Packaged Refrigerated Products	38°F / (3.3°C)

SYMBOL KEY:

(J) ELECTRICAL JUNCTION BOX  
(SUPPLIED W/6" LEADS OR POWER CORD)

 TUB DRAIN LOCATION

[illegible]

- On the six foot display a separate 120/60/1 15 AMP circuit is required for the condensate evaporator.
- Refrigerated cases are designed to operate in a maximum of 75°F (24°C) ambient and 55% relative humidity.
- Due to continuing engineering improvements, specifications are subject to change without notice.
- If a GFCI circuit is required, a GFCI Breaker Must be used instead of GFCI receptacle.



*The Signature of Quality*®

FEDERAL INDUSTRIES

**FEDERAL INDUSTRIES**  
A Standex Company

215 Federal Avenue Belleville, Wisconsin 53508-9201

**Phone:** 800-356-4206

**Fax:** 608-424-3234

**Email:** [Geninfo@Federalind.com](mailto:Geninfo@Federalind.com)

**Website:** [Federalind.com](http://Federalind.com)