



The Signature of Quality

FEDERAL INDUSTRIES

A Standex Company

215 Federal Avenue
Belleville, WI 53508-9201

Phone: 800-356-4206

Fax: 608-424-3234

Email: geninfo@federalind.com

Website: www.federalind.com

Project Name: _____

Item #: _____

Model #: _____ Qty: _____

Approval: _____

AIA#

SIS#

REFRIGERATED SELF-SERVE END CAP DISPLAY CASE

Designed with impulse sales in mind. Get maximum return and increased profits by putting the food where the people are.



Model ECSS40SC Shown

MODEL	DIMENSIONS
<input type="checkbox"/> ECSS40SC	40 x 40 x 60 (in) 1016 x 1016 x 1524 (mm)
<input type="checkbox"/> ECSS60SC	60 x 40 x 60 (in) 1524 x 1016 x 1524 (mm)

STANDARD FEATURES

Model Features

- Black metal base, interior and canopy. Choice of six standard laminates on exterior. Other color laminates are optional
- Air Deflector
- Easily accessible light switch and temperature control
- Insulated with high-density foam
- Adjustable Leg Levelers

Refrigeration

- Condensate pump provided
- Easy clean, rust-proof insulated evaporator coil compartment
- Refrigeration controls maintain 38°-40° F. Note: Case temperature will vary if the air curtain is disrupted
- R449a Refrigerant
- Thermometer

Shelving

- Adjustable black metal shelves, three tiers

Lighting

- 3500k LED top and under shelf lighting.
- DLC Certified, IP66 rated.

Agency Approvals

- UL Safety and UL Sanitation Listed to NSF Standard No. 7
- DOE 2017 Compliant

OPTIONAL ACCESSORIES

- ☐ Special Color Laminated Exterior Finish
- ☐ Recessed Casters or Legs
- ☐ Cord and Plug (30 AMP)
- ☐ Remote Refrigeration (R449a Refrigerant,EEV Included)
- ☐ Cart Bumper
- ☐ Condensate Evaporator Assembly (Field Install) 120V 15 AMP
Dedicated Circuit Required
- ☐ Large-capacity condensate evaporator assembly (field install)
(separate 208/240V, 20A circuit required) ECSS60SC only



WARRANTY*
One year Parts and Labor
2nd thru 5th year part
only service compressor
(U.S.A and Canada)



Note: Information is subject to change at any time.
Visit www.federalind.com for the most current specs.

Revised 08/21/2023

AIA#

REFRIGERATED SELF-SERVE END CAP DISPLAY CASE

SIS#

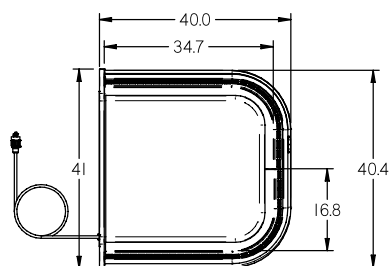
Product Specifications

Intended Environment: Type I - Designed to operate in maximum ambient conditions of 75°F (24°C) and 55% relative humidity unless noted otherwise in system information below.

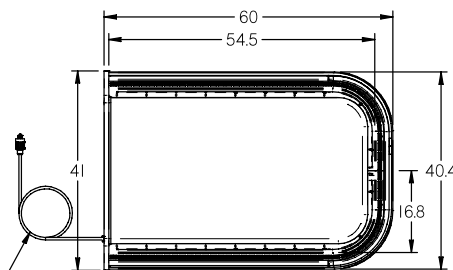
Zone	Intended Product To Be Displayed	Avg Prod Temp °F/°C
All	Packaged Refrigerated Products	38°F / (3.3°C)

DIMENSION: xx"/(mm)

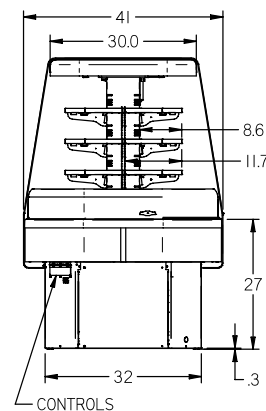
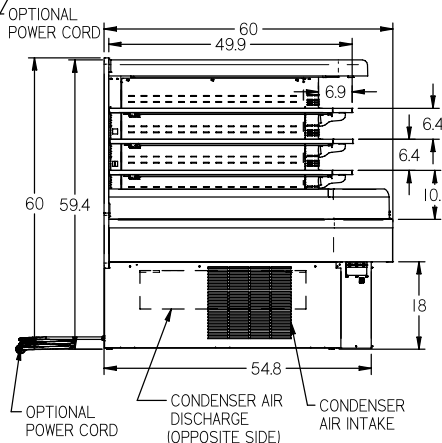
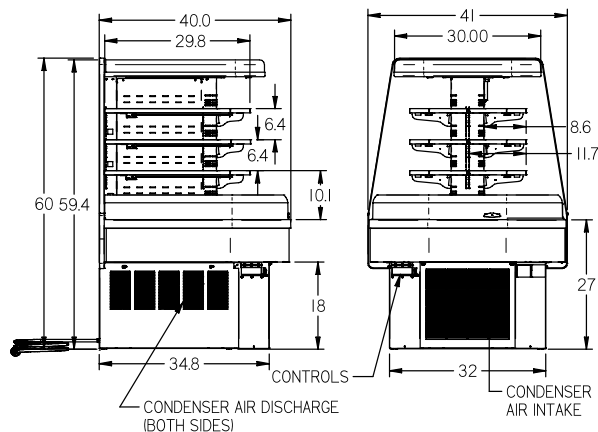
DIMENSION TOLERANCE +/- 0.25 (6.4)



ECSS40



ECSS60



MODEL	DIMENSIONS				DISPLAY AREA (SQ. FT.)	SHIPPING WHT		SELF CONTAINED Permanently Connected		H.P.	OPTIONAL NEMA PLUG	REMOTE WITH CONDENSATE PAN	
	L	D	H1	UNITS		LBS	KILO	VOLTAGE	AMPS		CONFIG (SC)	VOLTAGE	AMPS
ECSS40SC	40	40	60	in.	17.6	560	254	208-240/60/1	20 AMPS	1 HP	6-20P	208-240/60/1	10 AMPS
	1016	1016	1524	mm.									
ECSS60SC	60	40	60	in.	27.9	760	345	208-240/60/1	20 AMPS	1-1/2 HP	6-20P	208-240/60/1	10 AMPS
	1524	1016	1524	mm.									

- Case temperature will vary if the air curtain is disrupted
- Refrigerated cases are designed to operate in a maximum of 75°F (24°C) ambient and 55% relative humidity.
- Due to continuing engineering improvements, specifications are subject to change without notice.

DOE 2017
Energy Efficiency
Compliant

The Signature of Quality®

FEDERAL INDUSTRIES

A Standex Company

215 Federal Avenue Belleville, Wisconsin 53508-9201

Phone: 800-356-4206

Fax: 608-424-3234

Email: Geninfo@Federalind.com

Website: Federalind.com