



The Signature of Quality

### FEDERAL INDUSTRIES

A Standex Company  
215 Federal Avenue  
Belleville, WI 53508-9201

Phone: 800-356-4206  
Fax: 608-424-3234  
Email: geninfo@federalind.com  
Website: www.federalind.com

Project Name: \_\_\_\_\_

Item #: \_\_\_\_\_

Model #: \_\_\_\_\_ Qty: \_\_\_\_\_

Approval: \_\_\_\_\_

AIA#

SIS#

## REFRIGERATED SELF-SERVE END CAP DISPLAY CASE

Designed with impulse sales in mind. Get maximum return and increased profits by putting the food where the people are.



Model ECSS40SC Shown

MODEL	DIMENSIONS
<input type="checkbox"/> ECSS40SC	40 x 40 x 60 (in) 1016 x 1016 x 1524 (mm)
<input type="checkbox"/> ECSS60SC	60 x 40 x 60 (in) 1524 x 1016 x 1524 (mm)

### STANDARD FEATURES

#### Model Features

- Black metal base, interior and canopy. Choice of six standard laminates on exterior. Other color laminates are optional
- Air Deflector
- Easily accessible light switch and temperature control
- Insulated with high-density foam
- Adjustable Leg Levelers

#### Refrigeration

- Condensate pump provided
- Easy clean, rust-proof insulated evaporator coil compartment
- Refrigeration controls maintain 38°-40° F. Note: Case temperature will vary if the air curtain is disrupted
- R454c refrigerant
- Thermometer

#### Shelving

- Adjustable black metal shelves, three tiers

#### Lighting

- 3500k LED top and under shelf lighting.
- DLC Certified, IP66 rated.

#### Agency Approvals

- UL Safety and UL Sanitation Listed to NSF Standard No. 7
- DOE 2017 Compliant

### OPTIONAL ACCESSORIES

- Special Color Laminated Exterior Finish
- Recessed Casters or Legs
- Cord and Plug ( 20 AMP )
- Remote Refrigeration (R449a Refrigerant,EEV Included)
- Cart Bumper
- Condensate Evaporator Assembly ( Field Install ) 120V 15 AMP Dedicated Circuit Required
- Large-capacity condensate evaporator assembly (field install) (separate 208/240V, 20A circuit required) ECSS60SC only



WARRANTY\*  
One year Parts and Labor  
2nd thru 5th year part  
only service compressor  
(U.S.A and Canada)



Note: Information is subject to change at any time.  
Visit [www.federalind.com](http://www.federalind.com) for the most current specs.

AIA#

## REFRIGERATED SELF-SERVE END CAP DISPLAY CASE

SIS#

## Product Specifications

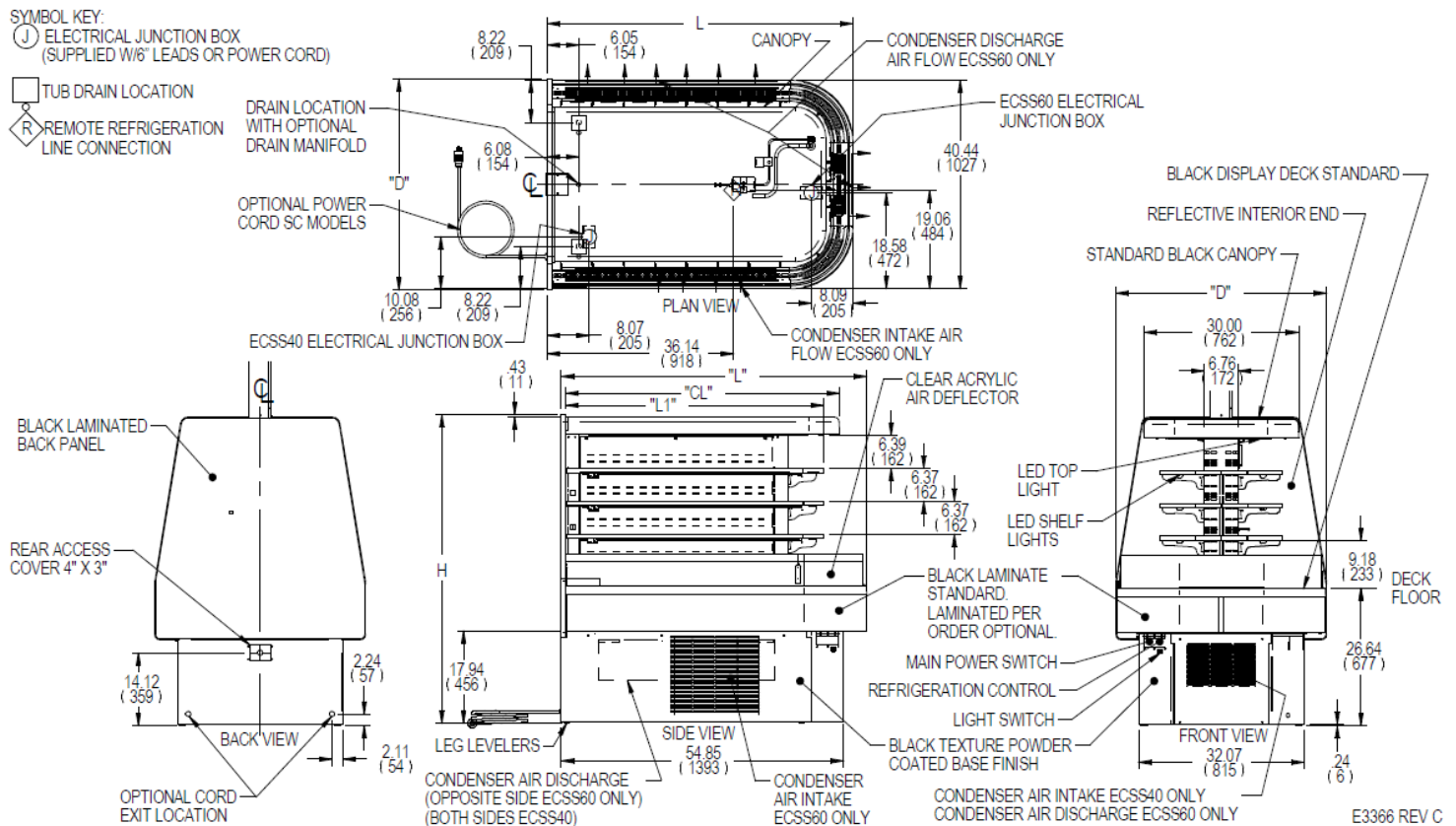
Intended Environment: Type I - Designed to operate in maximum ambient conditions of 75°F (24°C) and 55% relative humidity unless noted otherwise in system information below.

Zone	Intended Product To Be Displayed	Avg Prod Temp °F/°C
All	Packaged Refrigerated Products	38°F / (3.3°C)

DIMENSIONS: xx"/(mm)

DIMENSION TOLERANCE +/- .19 (4.8)

## ECSS60SC-3 SHOWN



MODEL	DIMENSION				SHELVING		INTERIOR VOLUME CU FT	PRODUCT AREA SQ FT	SELF CONTAINED					REMOTE							
	L	D	H	CL	# OF TIERS	D			L1	PERMANENT CONNECT 2-WIRE + GROUND 208-230/60/1	OPTIONAL NEMA CORD & PLUG 2-WIRE + GROUND 208-230/60/1	REFRIGERANT	CONDENSATE REMOVAL	SHIP WEIGHT LBS	PERMANENT CONNECT 2-WIRE + GROUND 208-230/60/1	REFRIGERANT	BTU'S @+20°	CONDENSATE REMOVAL	SHIP WEIGHT LBS		
	in	in	in	in		in			in	AMPS	MAX FUSE SIZE			KILO	AMPS	MAX FUSE SIZE			KILO		
ECSS40-3	40.00	41.00	60.00	33.00	3	8.5	29.90	11.1	17.2	8.2	15	6-20P	R454c	CONDENSATE PUMP	750 LBS	2.0	15	R449a	10,000	CONDENSATE PUMP	650 LBS
ECSS60-3	60.00	41.00	60.00	53.00	3	8.5	49.90	17.8	27.8	8.2	15	6-20P	R454c	CONDENSATE PUMP	950 LBS	2.0	15	R449a	14,000	CONDENSATE PUMP	840 LBS
	1016	1041	1524	838		216	759								340 KILO						295 KILO
	1524	1041	1524	1346		216	1267								431 KILO						381 KILO

- Case temperature will vary if the air curtain disrupted
- Refrigerated cases are designed to operate in a maximum of 75°F (24°C) ambient and 55% relative humidity.
- Due to continuing engineering improvements, specifications are subject to change without notice.



The Signature of Quality®

FEDERAL INDUSTRIES

A Standex Company

215 Federal Avenue Belleville, Wisconsin 53508-9201

Phone: 800-356-4206

Fax: 608-424-3234

Email: Geninfo@Federalind.com

Website: Federalind.com