



*The Signature of Quality*

## FEDERAL INDUSTRIES

A Standex Company

215 Federal Avenue  
Belleville, WI 53508-9201

Phone: 800-356-4206

Fax: 608-424-3234

Email: [geninfo@federalind.com](mailto:geninfo@federalind.com)

Website: [www.federalind.com](http://www.federalind.com)

Project Name: \_\_\_\_\_

Item #: \_\_\_\_\_

Model #: \_\_\_\_\_ Qty: \_\_\_\_\_

Approval: \_\_\_\_\_

AIA#

SIS#

## REFRIGERATED SELF-SERVE END CAP DISPLAY CASE

Designed with impulse sales in mind. Get maximum return and increased profits by putting the food where the people are.



Model ECSS40SC Shown

MODEL	DIMENSIONS
<input type="checkbox"/> ECSS40SC	40 x 40 x 60 (in) 1016 x 1016 x 1524 (mm)
<input type="checkbox"/> ECSS60SC	60 x 40 x 60 (in) 1524 x 1016 x 1524 (mm)

## STANDARD FEATURES

### Model Features

- Black metal base, interior and canopy. Choice of six standard laminates on exterior. Other color laminates are optional
- Air Deflector
- Easily accessible light switch and temperature control
- Insulated with high-density foam
- Adjustable Leg Levelers

### Refrigeration

- Condensate pump provided
- Easy clean, rust-proof insulated evaporator coil compartment
- Refrigeration controls maintain 38°-40° F. Note: Case temperature will vary if the air curtain is disrupted
- R454c refrigerant
- Thermometer

### Shelving

- Adjustable black metal shelves with price tag molding
- Three tiers

### Lighting

- 3500k LED top and under shelf lighting.
- DLC Certified, IP66 rated.

### Agency Approvals

- UL Safety and UL Sanitation Listed to NSF Standard No. 7
- DOE 2017 Compliant

## OPTIONAL ACCESSORIES

- ☐ Special Color Laminated Exterior Finish
- ☐ Recessed Casters or Legs
- ☐ Cord and Plug ( 20 AMP )
- ☐ Remote Refrigeration (R449a Refrigerant,EEV Included)
- ☐ Cart Bumper
- ☐ Condensate Evaporator Assembly ( Field Install ) 120V 15 AMP  
Dedicated Circuit Required
- ☐ Large-capacity condensate evaporator assembly (field install)  
(separate 208/240V, 20A circuit required) ECSS60SC only



**WARRANTY\***  
One year Parts and Labor  
2nd thru 5th year part  
only service compressor  
(U.S.A and Canada)



Note: Information is subject to change at any time.  
Visit [www.federalind.com](http://www.federalind.com) for the most current specs.

Revised 7/30/2025

## REFRIGERATED SELF-SERVE END CAP DISPLAY CASE

SIS#

## Product Specifications

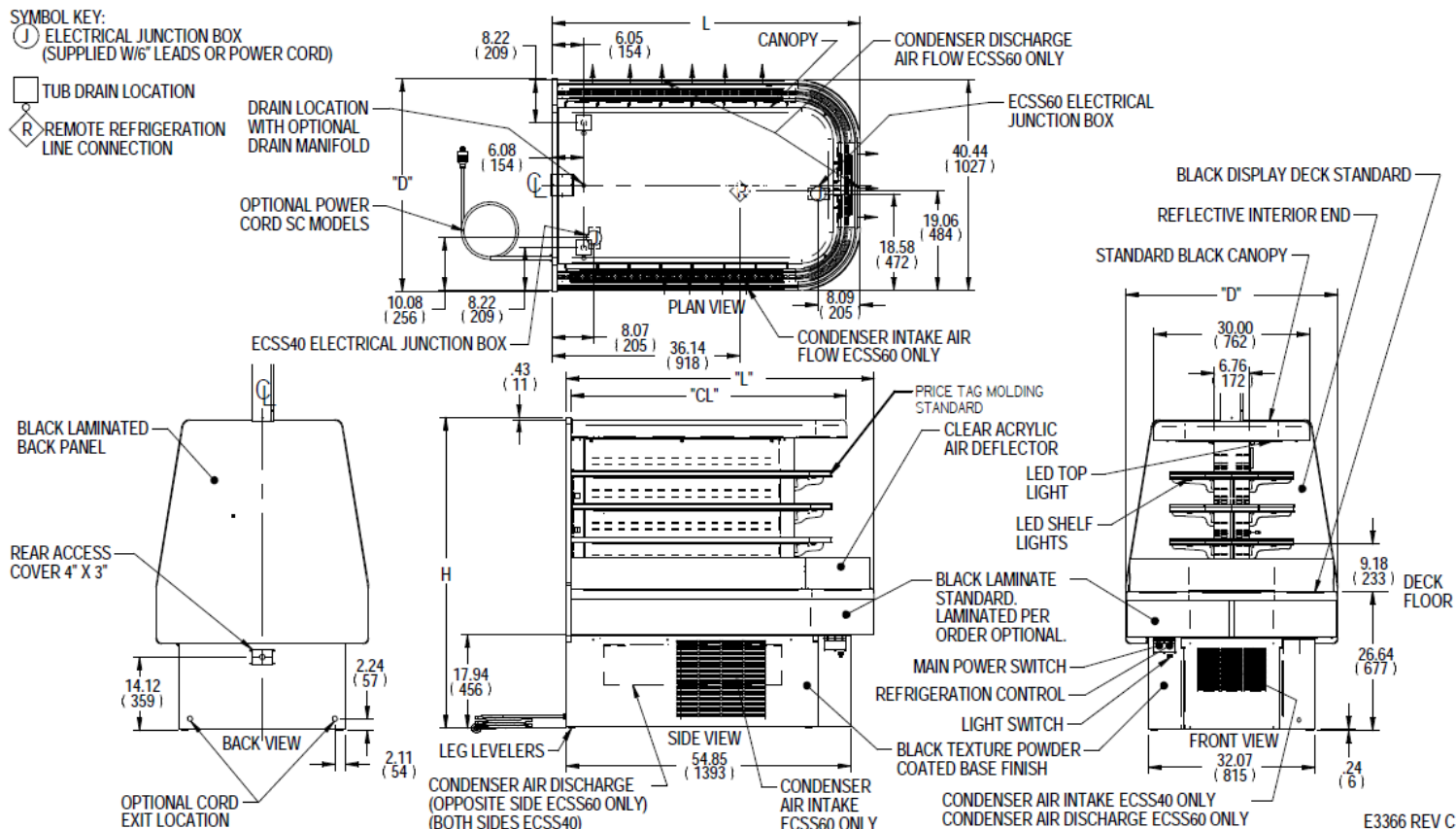
Intended Environment: Type I - Designed to operate in maximum ambient conditions of 75°F (24°C) and 55% relative humidity unless noted otherwise in system information below.

Zone	Intended Product To Be Displayed	Avg Prod Temp °F/°C
All	Packaged Refrigerated Products	38°F / (3.3°C)

DIMENSIONS: xx"/(mm)

DIMENSION TOLERANCE +/- .19 (4.8)

ECSS60SC-3 SHOWN



MODEL	DIMENSION				SHELVING			INTERIOR VOLUME CU FT	PRODUCT AREA SQ FT	SELF CONTAINED						REMOTE					
	L	D	H	CL	# OF TIERS	D	L1			PERMANENT CONNECT		OPTIONAL NEMA CORD & PLUG	REFRIGERANT	CONDENSATE REMOVAL	SHIP WEIGHT	PERMANENT CONNECT		REFRIGERANT	BTU'S @+20"	CONDENSATE REMOVAL	SHIP WEIGHT
	in	in	in	in		in	in			2-WIRE + GROUND		2-WIRE + GROUND			LBS	2-WIRE + GROUND					LBS
	mm	mm	mm	mm		mm	mm			208-230/60/1		208-230/60/1			KILO	208-230/60/1					KILO
	mm	mm	mm	mm		mm	mm			AMPS	MAX FUSE SIZE	208-230/60/1			AMPS	MAX FUSE SIZE	AMPS				MAX FUSE SIZE
ECSS40-3	40.00	41.00	60.00	33.00	3	8.5	29.90	11.1 CU FT	17.2 SQ FT	8.2	15	6-20P	R454c	CONDENSATE PUMP	750 LBS	2.0	15	R449a	14,000	CONDENSATE PUMP	650 LBS
	1016	1041	1524	838		216	759								340 KILO					295 KILO	
ECSS60-3	60.00	41.00	60.00	53.00	3	8.5	49.90	17.8 CU FT	27.8 SQ FT	8.2	15	6-20P	R454c	CONDENSATE PUMP	950 LBS	2.0	15	R449a	14,000	CONDENSATE PUMP	840 LBS
	1524	1041	1524	1346		216	1267								431 KILO					381 KILO	

- Case temperature will vary if the air curtain disrupted
- Refrigerated cases are designed to operate in a maximum of 75°F (24°C) ambient and 55% relative humidity.
- Due to continuing engineering improvements, specifications are subject to change without notice.



*The Signature of Quality*®

**FEDERAL INDUSTRIES**

A Standex Company

215 Federal Avenue Belleville, Wisconsin 53508-9201

**Phone:** 800-356-4206

**Fax:** 608-424-3234

**Email:** [Geninfo@Federalind.com](mailto:Geninfo@Federalind.com)

**Website:** [Federalind.com](http://Federalind.com)