



*The Signature of Quality®*

## FEDERAL INDUSTRIES

A Standex Company

215 Federal Avenue  
Belleville, WI 53508-9201

Phone: 800-356-4206

Fax: 608-424-3234

Email: [geninfo@federalind.com](mailto:geninfo@federalind.com)

Website: [www.federalind.com](http://www.federalind.com)

Project Name: \_\_\_\_\_

Item #: \_\_\_\_\_

Model #: \_\_\_\_\_ Qty: \_\_\_\_\_

Approval: \_\_\_\_\_

AIA#

SIS#

## REFRIGERATED SELF-SERVE ISLAND DISPLAY CASE

Designed with impulse sales in mind. Get maximum return and increased profits with shop-around merchandising.



Models IMSS84SC-3 and IMSS60SC-2 Shown  
Shown with options

MODEL	DIMENSIONS
<input type="checkbox"/> IMSS60SC-2	60.5 x 40.5 x 55 (in) 1537 x 1029 x 1397 (mm)
<input type="checkbox"/> IMSS60SC-3	60.5 x 40.5 x 60 (in) 1537 x 1029 x 1524 (mm)
<input type="checkbox"/> IMSS84SC-2	84.5 x 40.5 x 55 (in) 2146 x 1029 x 1397 (mm)
<input type="checkbox"/> IMSS84SC-3	84.5 x 40.5 x 60 (in) 2146 x 1029 x 1524 (mm)

## STANDARD FEATURES

### Model Features

- Black Metal Base, Interior and Canopy. Choice of standard laminates on exterior. Specialty laminates are optional.
- Air Deflector
- Easily accessible light switch and temperature control
- Insulated with high-density foam
- Adjustable Leg Levelers

### Refrigeration

- Condensate evaporator provided for a totally self contained system (Models IMSS60SC-3 and IMSS84SC-3)
- Condensate Pump standard on models IMSS60SC-2 and IMSS84SC-2.
- Easy clean, rust-proof insulated evaporator coil compartment
- Refrigeration controls maintain 38°- 40° F. Note: Case temperature will vary if the air curtain is disrupted
- R454c Refrigerant
- Thermometer

### Shelving

- Adjustable black metal shelves with price tag molding
- Two or three tier

### Lighting

- 3500K LED top and under shelf lighting
- DCL Certified, IP66 rated

### Agency Approvals

- UL Safety and UL Sanitation Listed to NSF Standard No. 7
- DOE 2017 Compliant

## OPTIONAL ACCESSORIES

- |  |  |
|--|--|
| <input type="checkbox"/> Special color laminated exterior finish | <input type="checkbox"/> Condenser air filter (self-contained only)  |
| <input type="checkbox"/> Stainless steel exterior                | <input type="checkbox"/> Remote refrigeration (R449a refrigerant, EEV included)  |
| <input type="checkbox"/> Stainless steel interior                | <input type="checkbox"/> Large-capacity condensate evaporator assembly (field install) (separate 208/240V, 20A circuit required) |
| <input type="checkbox"/> Recessed casters or legs                | <input type="checkbox"/> Condensate pump in lieu of pan  |
| <input type="checkbox"/> Cord and plug                           | <input type="checkbox"/> Condensate evaporator assembly (field install) (separate 208-240V, 15A circuit required)                |
| <input type="checkbox"/> Cart bumper                             |  |
| <input type="checkbox"/> Top-mounted electrical                  |  |
| <input type="checkbox"/> Top-mount refrigeration                 |  |
| <input type="checkbox"/> Top-mount condensate pump lines         |  |



**WARRANTY\***  
One year Parts and Labor  
2nd thru 5th year part  
only service compressor  
(U.S.A and Canada)

Note: Information is subject to change at any time.  
Visit [www.federalind.com](http://www.federalind.com) for the most current specs.

Revised 7/30/2025

AIA#

## REFRIGERATED SELF-SERVE ISLAND DISPLAY CASE

SIS#

## Product Specifications

Intended Environment: Type I - Designed to operate in maximum ambient conditions of 75°F (24°C) and 55% relative humidity unless noted otherwise in system information below.

Zone	Intended Product To Be Displayed	Avg Prod Temp °F/°C
All	Packaged Refrigerated Products	38°F / (3.3°C)

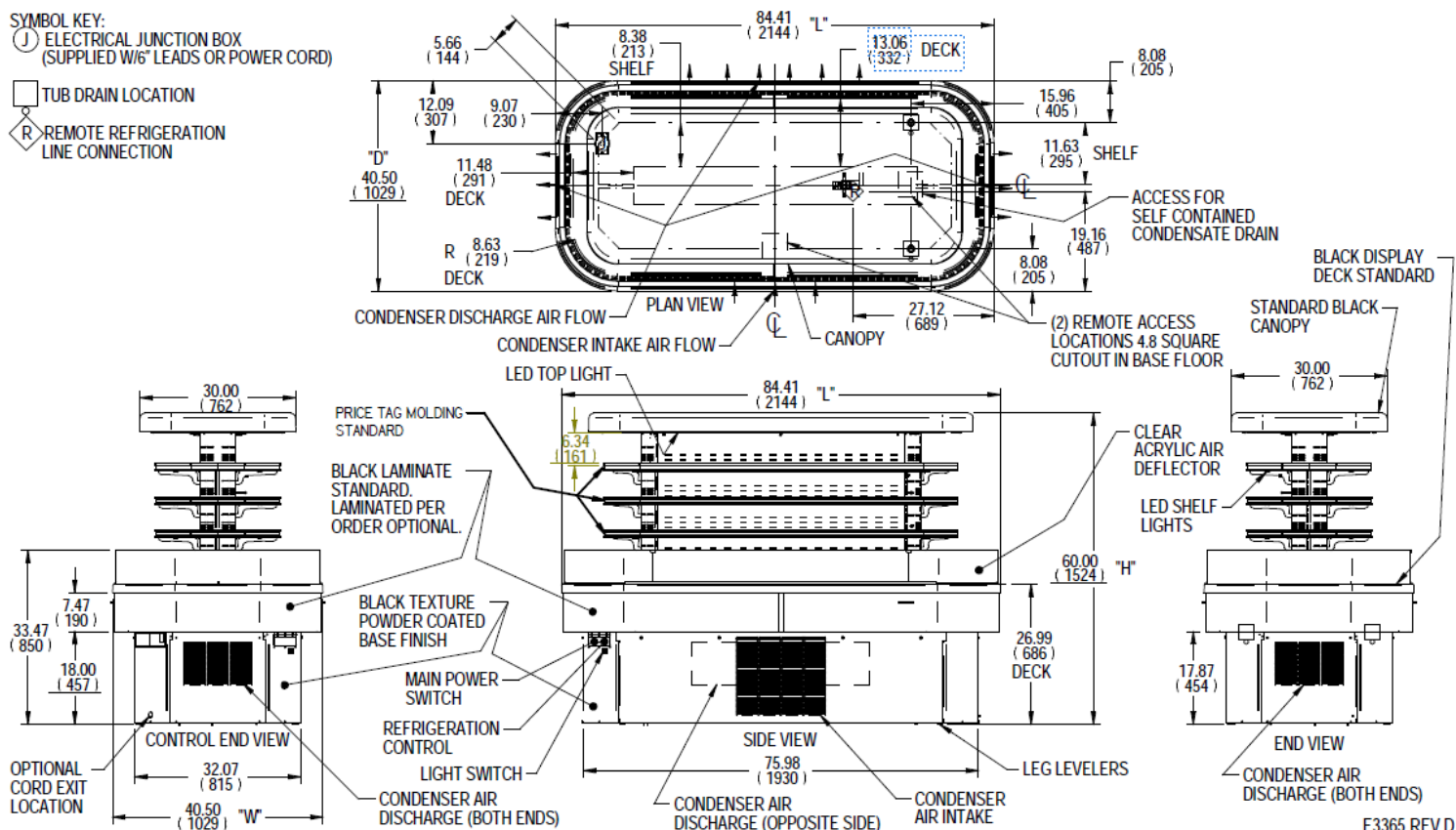
DIMENSIONS: xx"/(mm)

DIMENSION TOLERANCE +/- .19 (4.8)

SYMBOL KEY:  
 (J) ELECTRICAL JUNCTION BOX  
 (SUPPLIED W/6" LEADS OR POWER CORD)

(T) TUB DRAIN LOCATION

(R) REMOTE REFRIGERATION  
 LINE CONNECTION



E3365 REV D

MODEL	DIMENSION			SHELVING		INTERIOR VOLUME CU FT	PRODUCT AREA SQ FT	SELF CONTAINED						REMOTE						
	L in mm	D in mm	H in mm	# OF TIERS	D in mm			L in mm	PERMANENT CONNECT		OPTIONAL NEMA CORD & PLUG 2-WIRE + GROUND 208-230/60/1	REFRIGERANT	CONDENSATE REMOVAL	SHIP WEIGHT LBS KILO	PERMANENT CONNECT		REFRIGERANT	BTU'S @+20°	CONDENSATE REMOVAL	SHIP WEIGHT LBS KILO
									2-WIRE + GROUND 208-230/60/1						2-WIRE + GROUND 208-230/60/1					
									AMPS	MAX FUSE SIZE					AMPS	MAX FUSE SIZE				
IMSS60-2	60.50 1537	40.50 1029	55.00 1397	2	8.5 216	43.89 1115	14.50	20.80	15.0	20	6-20P	R454c	CONDENSATE PUMP	860 LBS 390 KILO	2.0	15	R449a	12,800	CONDENSATE PUMP	750 LBS 340 KILO
IMSS60-3	60.50 1537	40.50 1029	60.00 1524	3	8.5 216	43.89 1115	16.80	26.00	15.0	20	6-20P	R454c	CONDENSATE PAN	910 LBS 413 KILO	2.0	15	R449a	12,800	CONDENSATE PUMP	800 LBS 363 KILO
IMSS84-2	84.50 2146	40.50 1029	55.00 1397	2	8.5 216	67.89 1724	21.50	30.80	16.0	30	6-20P	R454c	CONDENSATE PUMP	1000 LBS 454 KILO	3.0	15	R449a	16,400	CONDENSATE PUMP	890 LBS 404 KILO
IMSS84-3	84.50 2146	40.50 1029	60.00 1524	3	8.5 216	67.89 1724	24.80	38.70	16.0	30	6-20P	R454c	CONDENSATE PAN	1150 LBS 522 KILO	3.0	15	R449a	16,400	CONDENSATE PUMP	1040 LBS 472 KILO

- Case temperature will vary if the air curtain disrupted
- Refrigerated cases are designed to operate in a maximum of 75°F (24°C) ambient and 55% relative humidity.
- Due to continuing engineering improvements, specifications are subject to change without notice.

DOE 2017  
Energy Efficiency  
Compliant



The Signature of Quality

FEDERAL INDUSTRIES

A Standex Company

215 Federal Avenue Belleville, Wisconsin 53508-9201

Phone: 800-356-4206

Fax: 608-424-3234

Email: Geninfo@Federalind.com

Website: Federalind.com