



The Signature of Quality®

FEDERAL INDUSTRIES

A Standex Company

215 Federal Avenue
Belleville, WI 53508-9201

Phone: 800-356-4206

Fax: 608-424-3234

Email: geninfo@federalind.com

Website: www.federalind.com

Project Name: _____

Item #: _____

Model #: _____ Qty: _____

Approval: _____

AIA#

SIS#

REFRIGERATED SELF-SERVE MULTI-DECK SPECIALTY MERCHANDISER

REMOTE UNITS DESIGNED FOR CONTINUOUS LINE-UPS

Designed with impulse in mind. Get maximum return from an attention-grabbing merchandiser and increase profits.



MODEL	DIMENSIONS (Includes End Panels)
<input type="checkbox"/> LMD4878R	49.8 x 38 x 78 (in) 1265 x 965 x 1981 (mm)
<input type="checkbox"/> LMD7278R	73.8 x 38 x 78 (in) 1875 x 965 x 1981 (mm)
<input type="checkbox"/> LMD9678R	97.8 x 38 x 78 (in) 2484 x 965 x 1981 (mm)

STANDARD FEATURES

Model Features

- Insulated with high-density urethane foam.
- Designed for continuous line-ups.
- White interior
- Choice of six standard laminates on exterior base, other colors laminates are optional. Black trim and top front canopy.
- Energy saving night curtain
- Thermometer
- Recessed casters w/ leg levelers

Refrigeration

- Electronic temperature control maintains average product temperature 38° to 40°. Note: Case temperature will vary if the air curtain is disrupted.
- Remote: Designed for R449a Refrigeration (EEV Included)
- Drain trap & 25' condensate drain hose

Shelving

- Adjustable white metal shelves with price tag molding. Shelves can be flat or slanted. Five tiers, black optional.

Lighting

- 3500K LED top light and shelf lights.
- DLC Certified, IP66 rated.

Agency Approvals

- UL Safety and UL Sanitation Listed to NSF Type II conditions.
- DOE 2017 Compliant

OPTIONAL ACCESSORIES

- | | |
|--|--|
| <input type="checkbox"/> Special Laminate Base Finish | <input type="checkbox"/> Stainless Steel Shelves |
| <input type="checkbox"/> Joining Kit For Continuous Line-ups | <input type="checkbox"/> Security Cover |
| <input type="checkbox"/> Condensate Pump | <input type="checkbox"/> Deli Meat Pegs |
| <input type="checkbox"/> Black or Stainless Steel Interior
(Including Shelving) | <input type="checkbox"/> Outdoor Condensing Unit |
| <input type="checkbox"/> White Top Front Canopy | |
| <input type="checkbox"/> Reflective End Glass | |
| <input type="checkbox"/> Stainless Steel Exterior | |



WARRANTY*
One year Parts and Labor
2nd thru 5th year part
only service compressor
(U.S.A and Canada)



Note: Information is subject to change at any time.
Visit www.federalind.com for the most current specs.

Revised 01/12/2026

AIA#

REFRIGERATED SELF-SERVE MULTI-DECK SPECIALTY MERCHANDISER

SIS#

Product Specifications

Intended Environment: Type I - Designed to operate in maximum ambient conditions of 75°F (24°C) and 55% relative humidity unless noted otherwise in system information below.

Zone	Intended Product To Be Displayed	Avg Prod Temp °F/°C
All	Packaged Refrigerated Products	38°F / (3.3°C)

DIMENSION: xx"/(mm)

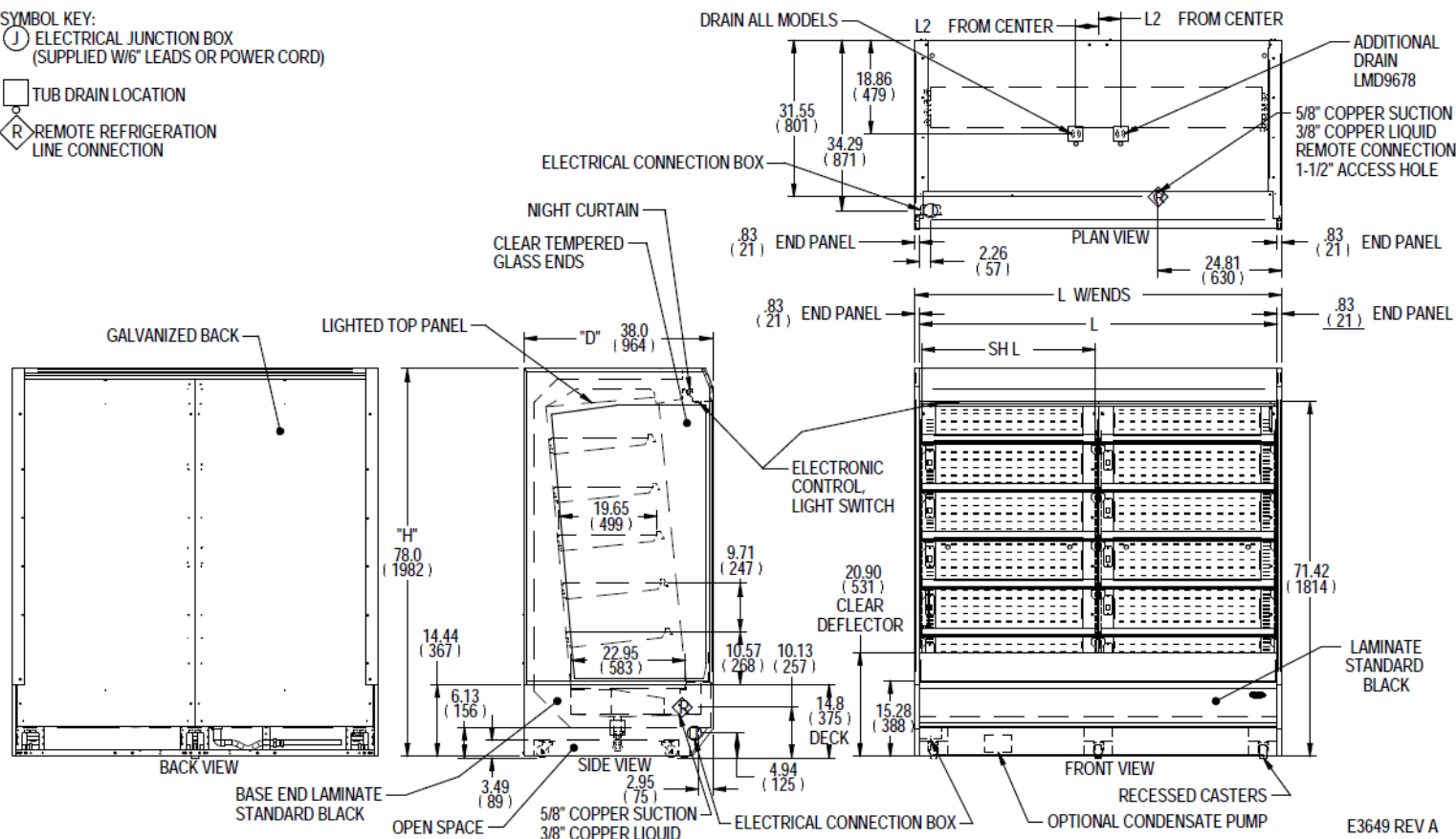
DIMENSION TOLERANCE +/- 0.19 (4.8)

SYMBOL KEY:

Ⓜ ELECTRICAL JUNCTION BOX
(SUPPLIED W/6' LEADS OR POWER CORD)

□ TUB DRAIN LOCATION

Ⓡ REMOTE REFRIGERATION
LINE CONNECTION



E3649 REV A

MODEL	DIMENSION				TUB DRAIN	SHELVING			INTERIOR VOLUME CU FT	DISPLAY AREA	PRODUCT AREA DECK	PRODUCT AREA SHELVES	PERMANENT CONNECT		OPTIONAL NEMA	REFRIGERANT	BTU'S @+20°	CONDENSATE REMOVAL	SHIP WEIGHT
	L	"L" W/ENDS	D	H	L2	# OF TIERS	D	SH L					2-WIRE + GROUND	CORD & PLUG	2-WIRE + GROUND				LBS
	in	in	in	in	in		in	in											
	mm	mm	mm	mm	mm		mm	mm											
	mm	mm	mm	mm	mm		mm	mm											
LMD4878R	48.00	49.80	38.00	78.00	4.50	5	19.65	47	36.3 CU FT	40.0 SQ FT	7.7 SQ FT	32.3 SQ FT	4.4	15	NEMA 5-15P	R449a	9,600	FLOOR DRAIN	800 LBS
	1219	1265	965	1981	114		499	1194											363 KIL0
LMD7278R	72.00	73.80	38.00	78.00	4.50	10	19.65	35	54.4 CU FT	59.5 SQ FT	11.5 SQ FT	48.0 SQ FT	4.6	15	NEMA 5-15P	R449a	14,400	FLOOR DRAIN	1070 LBS
	1829	1875	965	1981	114		499	889											485 KIL0
LMD9678R	96.00	97.80	38.00	78.00	20.00	10	19.65	47	72.6 CU FT	80.0 SQ FT	15.3 SQ FT	64.7 SQ FT	5.9	15	NEMA 5-15P	R449a	19,200	FLOOR DRAIN	1260 LBS
	2438	2484	965	1981	508		499	1194											571 KIL0

- Case temperature will vary if the air curtain is disrupted.
- Refrigerated cases are designed to operate in a maximum of 80°F (27°C) ambient and 55% relative humidity.
- Due to continuing engineering improvements, specifications are subject to change without notice.
- If a GFCI circuit is required, a GFCI Breaker Must be used instead of GFCI receptacle.

DOE 2017
Energy Efficiency
Compliant

c UL US

CLASSIFIED
UL
EPH
9143
ANSI/NSF 7



The Signature of Quality

FEDERAL INDUSTRIES

A Standex Company

215 Federal Avenue, Belleville, Wisconsin 53508-9201

Phone: 800-356-4206

Fax: 608-424-3234

Email: Geninfo@Federalind.com

Website: Federalind.com