



The Signature of Quality®

FEDERAL INDUSTRIES

A Standex Company
215 Federal Avenue
Belleville, WI 53508-9201

Phone: 800-356-4206
Fax: 608-424-3234
Email: geninfo@federalind.com
Website: www.federalind.com

Project Name: _____

Item #: _____

Model #: _____ Qty: _____

Approval: _____

AIA#

SIS#

REFRIGERATED SELF-SERVE MULTI-DECK SPECIALTY MERCHANDISER

REMOTE UNITS DESIGNED FOR CONTINUOUS LINE-UPS

Designed with impulse in mind. Get maximum return from an attention-grabbing merchandiser and increase profits.



MODEL	DIMENSIONS (Includes End Panels)
<input type="checkbox"/> LMD4878R	49.8 x 38 x 78 (in) 1265 x 965 x 1981 (mm)
<input type="checkbox"/> LMD7278R	73.8 x 38 x 78 (in) 1875 x 965 x 1981 (mm)
<input type="checkbox"/> LMD9678R	97.8 x 38 x 78 (in) 2484 x 965 x 1981 (mm)

STANDARD FEATURES

Model Features

- Insulated with high-density urethane foam.
- Designed for continuous line-ups.
- White interior
- Choice of six standard laminates on exterior base, other colors laminates are optional. Black trim and top front canopy.
- Energy saving night curtain
- Thermometer
- Recessed casters w/ leg levelers

Refrigeration

- Electronic temperature control maintains average product temperature 38° to 40°. Note: Case temperature will vary if the air curtain is disrupted.
- Remote: Designed for R454c Refrigeration (EEV Included)
- Drain trap & 25' condensate drain hose

Shelving

- Adjustable white metal shelves with price tag molding. Shelves can be flat or slanted. Five tiers, black optional.

Lighting

- 3500K LED top light and shelf lights.
- DLC Certified, IP66 rated.

Agency Approvals

- UL Safety and UL Sanitation Listed to NSF Type II conditions.
- DOE 2017 Compliant

OPTIONAL ACCESSORIES

- Special Laminate Base Finish
- Joining Kit For Continuous Line-ups
- Condensate Pump
- Black or Stainless Steel Interior (Including Shelving)
- White Top Front Canopy
- Reflective End Glass
- Stainless Steel Exterior
- Stainless Steel Shelves
- Security Cover
- Deli Meat Pegs
- Outdoor Condensing Unit



WARRANTY*
One year Parts and Labor
2nd thru 5th year part
only service compressor
(U.S.A and Canada)



Note: Information is subject to change at any time.
Visit www.federalind.com for the most current specs.

Revised 5/1/2026

AIA#

REFRIGERATED SELF-SERVE MULTI-DECK SPECIALTY MERCHANDISER

SIS#

Product Specifications

Intended Environment: Type I - Designed to operate in maximum ambient conditions of 75°F (24°C) and 55% relative humidity unless noted otherwise in system information below.

Zone	Intended Product To Be Displayed	Avg Prod Temp °F/°C
All	Packaged Refrigerated Products	38°F / (3.3°C)

DIMENSION: xx"/(mm)

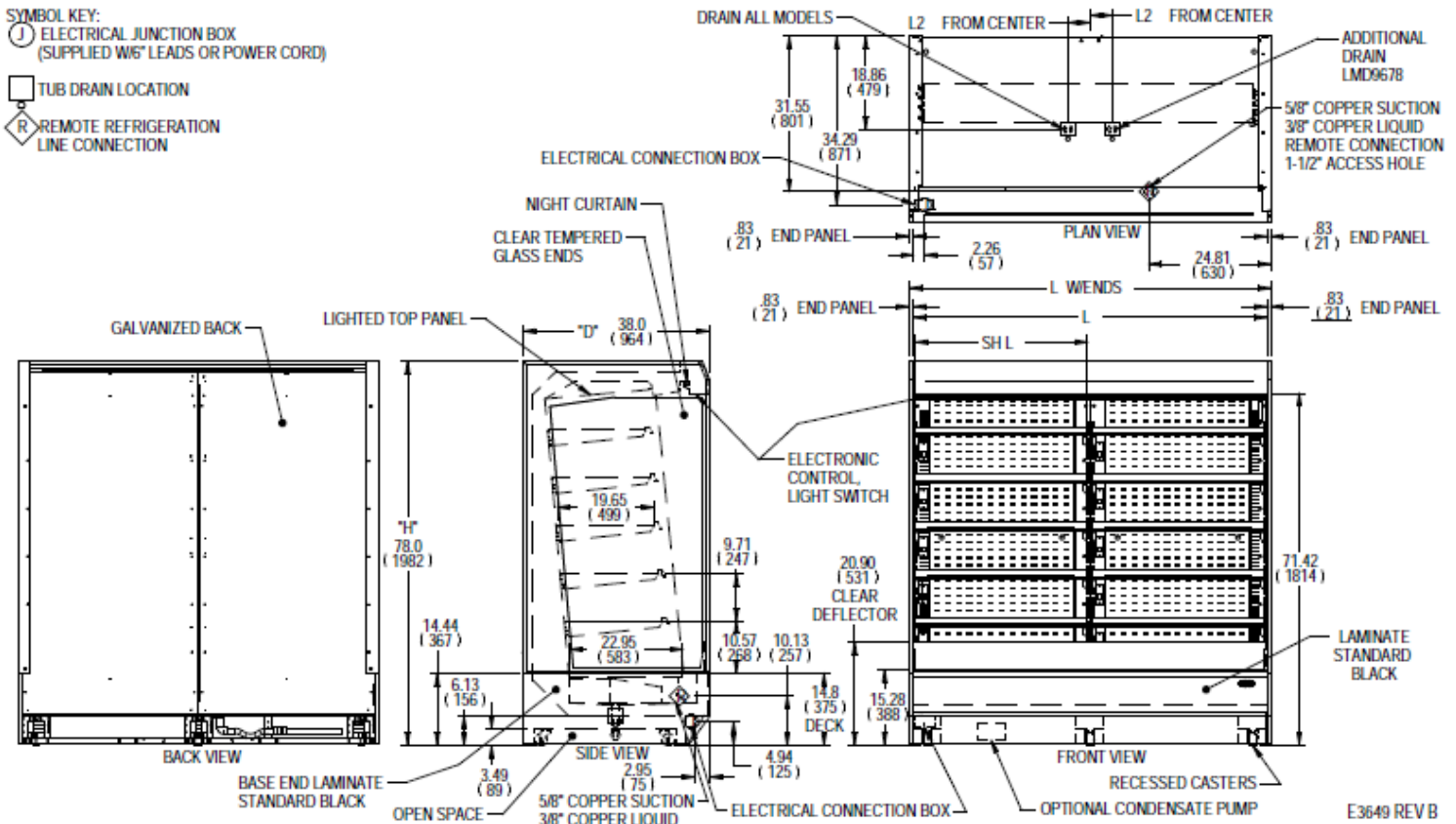
DIMENSION TOLERANCE +/- 0.19 (4.8)

SYMBOL KEY:

① ELECTRICAL JUNCTION BOX
(SUPPLIED W/6 LEADS OR POWER CORD)

□ TUB DRAIN LOCATION

◇ R REMOTE REFRIGERATION
LINE CONNECTION



E3649 REV B

MODEL	DIMENSION					TUB DRAIN L2	SHELVING		INTERIOR VOLUME CU FT	DISPLAY AREA	PRODUCT AREA DECK	PRODUCT AREA SHELVES	REMOTE						
	L	"L" W/ENDS	D	H	# OF		D	SH L					PERMANENT CONNECT 2-WIRE + GROUND 120/60/1		REFRIGERANT	BTU'S @+20°	CONDENSATE REMOVAL	SHIP WEIGHT LBS	
	in	in	in	in	TIERS		in	in					AMPS	MAX FUSE SIZE					KILO
	mm	mm	mm	mm			mm	mm											
LMD4878R	48.00	49.80	38.00	78.00	4.50	19.65	47	36.3 CU FT	40.0 SQ FT	7.7 SQ FT	32.3 SQ FT	4.0	15	R454c	9,600	FLOOR DRAIN	800 LBS		
	1219	1265	965	1981	114	499	1194										363 KILO		
LMD7278R	72.00	73.80	38.00	78.00	4.50	19.65	35	54.4 CU FT	59.5 SQ FT	11.5 SQ FT	48.0 SQ FT	4.0	15	R454c	14,400	FLOOR DRAIN	1070 LBS		
	1829	1875	965	1981	114	499	889										485 KILO		
LMD9678R	96.00	97.80	38.00	78.00	20.00	19.65	47	72.6 CU FT	80.0 SQ FT	15.3 SQ FT	64.7 SQ FT	4.0	15	R454c	19,200	FLOOR DRAIN	1260 LBS		
	2438	2484	965	1981	508	499	1194										571 KILO		

CORD AND PLUG NOT AVAILABLE ON REMOTE

- Case temperature will vary if the air curtain is disrupted.
- Refrigerated cases are designed to operate in a maximum of 80°F (27°C) ambient and 55% relative humidity.
- Due to continuing engineering improvements, specifications are subject to change without notice.
- If a GFCI circuit is required, a GFCI Breaker Must be used instead of GFCI receptacle.

DOE 2017
Energy Efficiency
Compliant

c UL US

CLASSIFIED
UL EPI 9143
ANSI/NSF 7



The Signature of Quality®

FEDERAL INDUSTRIES

A Standex Company

215 Federal Avenue, Belleville, Wisconsin 53508-9201

Phone: 800-356-4206

Fax: 608-424-3234

Email: Geninfo@Federalind.com

Website: Federalind.com