



The Signature of Quality

FEDERAL INDUSTRIES

A Standex Company

215 Federal Avenue
Belleville, Wisconsin 53508-9201

Phone: 800-356-4206

Fax: 608-424-3234

Email: Geninfo@Federalind.com

Website: Federalind.com

Project Name: _____

Item #: _____

Model #: _____ Qty: _____

Approval: _____

AIA #

SIS #

High-Profile Self-Serve Refrigerated Milk Merchandiser 78"H X 40"D X 50"W

Designed for schools to enhance ease of merchandising for K-12 grades while also accommodating sales of other items for higher grades in one attractive package



Shown with optional rear sliding doors and roll down security cover

OPTIONAL ACCESSORIES

- ☐ Special External Laminate Finish
- ☐ Black Interior (Including Shelving)
- ☐ Stainless Steel Exterior Finish
- ☐ Stainless Steel Interior
- ☐ Additional Lighted LED Shelf (If Using Single Layer Of Milk Crates)
- ☐ Additional Shelf Depths
- ☐ Roll-down Security Cover - white
- ☐ Removable Security Cover
- ☐ Reflective End Glass
- ☐ Graphic wrap
- ☐ Sliding Rear Access Doors (Clear or Reflective)
- ☐ Rear door locks

*Additional options available on the website and price list.

MODEL

☐ LMDM4878SC

DIMENSIONS

(Includes End Panels)

49.7 x 40.1 x 78 (in)
1262 x 1019 x 1981 (mm)

STANDARD FEATURES

Model Features

- Choice of six standard laminates on exterior
- Black metal front kick plate and trim with galvanized steel back
- White interior
- Moisture resistant end panel construction with field replaceable tempered thermo-pane glass
- Condenser air filter cleaning indicator light
- Easy to remove washable condenser air filter
- Energy saving night curtain
- Cord and plug
- Recessed casters with rear located floor locks
- Stainless steel slanted display deck to merchandise up to 12 milk crates (13"X13")
- Front access catch pan for broken milk containers

Refrigeration

- Electronic temperature control with on demand defrost
- PTC Condensate heater provided for a totally self-contained system
- Refrigeration controls maintain 35°-38°F (1.6°-3.3°C)
Note: Case temperature will vary if the air curtain is disrupted
- Insulated with high-density urethane foam
- Thermometer
- R290 refrigerant, EPA SNAP compliant

Shelving

- One adjustable white metal shelf with LED light and price tag molding.
- Shelf can be flat or slanted downward at 10°

Lighting

- 3500K LED top and shelf light, DLC certified, IP 65 rated

Agency Approvals

- UL, C-UL and UL Sanitation listed to NSF-7, Type I conditions
- DOE 2017 compliant



Note: Information is subject to change at any time. Visit www.federalind.com for the most current specs.

Revised 07/30/2025


AIA #
SIS #

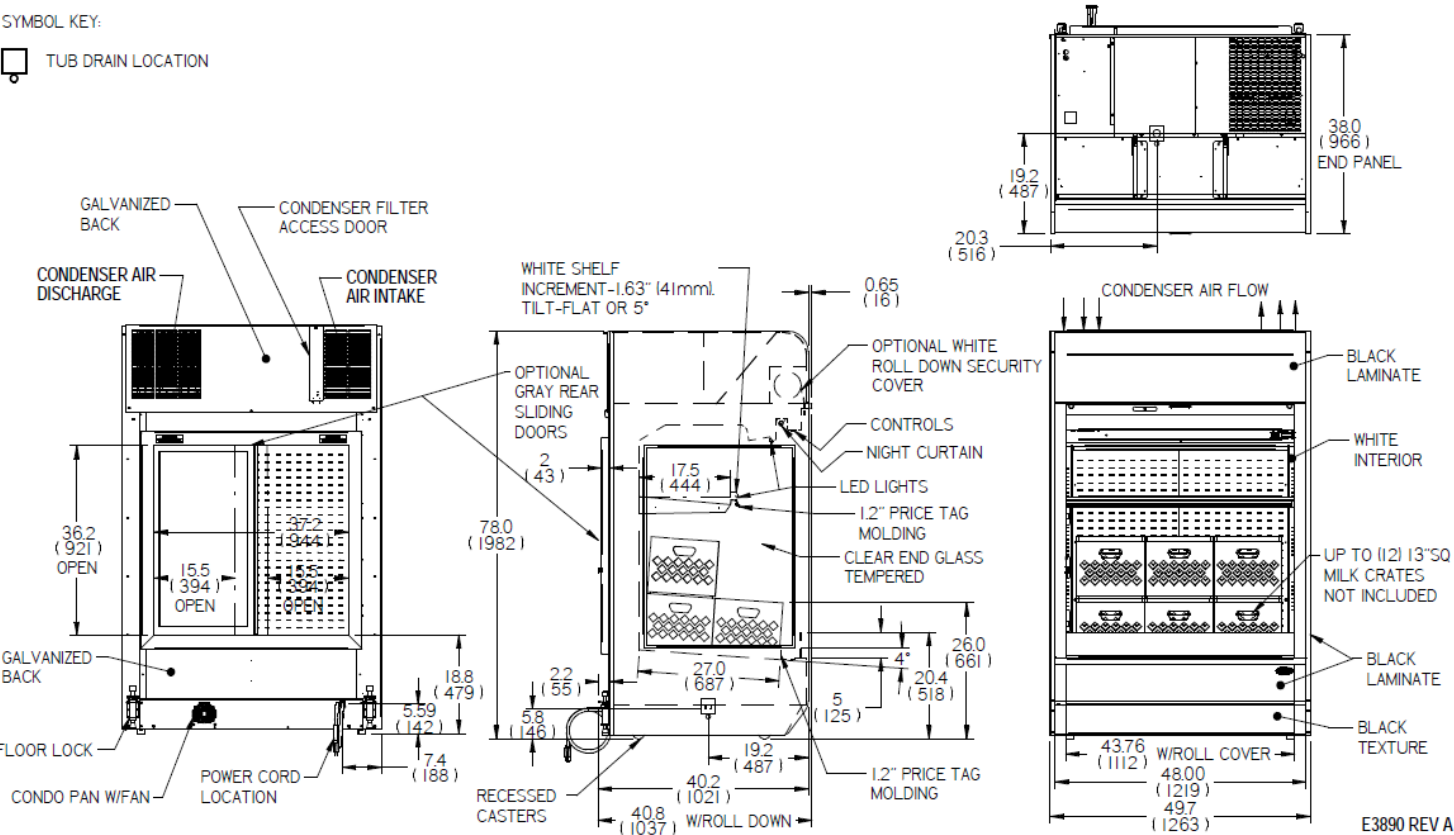
High-Profile Self-Serve Refrigerated Milk Merchandiser 78"H X 40"D X 50"W

Product Specifications

Intended Environment: Type I (Self Contained) - Designed to operate in maximum ambient conditions of 75°F (24°C) and 55% relative humidity.		
Zone	Intended Product To Be Displayed	Avg prod temp °F / °C
All	Packaged Refrigerated Products	35 -38°F / (1.6 - 3.3°C)

DIMENSION: xx"/(mm)
 DIMENSION TOLERANCE+/- 0.25(6.4)

SYMBOL KEY:
 TUB DRAIN LOCATION



MODEL	DIMENSIONS			DIMENSIONS W/ROLL DOWN COVER			# OF TIERS	SHELVING		DISPLAY DECK		INTERIOR VOLUME CU FT	SELF CONTAINED			REFRIGERANT	CONDENSATE REMOVAL	SHIP
	L	D	H	L	D	H		L	D	L	D		STANDARD CONNECTION CORD & PLUG					WEIGHT
	in	in	in	in	in	in		in	in	in	in		2-WIRE + GROUND, 208-240/60/1					LBS
	mm	mm	mm	mm	mm	mm		mm	mm	mm	mm		AMPS	MAX FUSE SIZE	NEMA CORD & PLUG			KILO
LMDM4878SC	49.70	40.10	78.00	49.70	40.90	78.00	1	47	17.5	48	27	34.00	15	20	NEMA 6-20P	R290	CONDENSATE PAN	1150 LBS
	1262	1019	1981	1262	1039	1981		1194	445	1219	686							522 KILO

- Case temperature will vary if the air curtain is disrupted.
- A 208-240 volt, 60 hertz, 1 phase, 2-wire plus ground power supply is required.
- Due to continuing engineering improvements, specifications are subject to change without notice.



FEDERAL INDUSTRIES
 A Standex Company
 215 Federal Avenue, Belleville, Wisconsin 53508-9201

Phone: 800-356-4206
Fax: 608-424-3234
Email: Geninfo@Federalind.com
Website: Federalind.com