



The Signature of Quality

FEDERAL INDUSTRIES

A Standex Company

215 Federal Avenue
Belleville, WI 53508-9201

Phone: 800-356-4206

Fax: 608-424-3234

Email: geninfo@federalind.com

Website: www.federalind.com

Project Name: _____

Item #: _____

Model #: _____ Qty: _____

Approval: _____

AIA#

SIS#

Convertible Service Over Refrigerated Self-Serve Display Case

Display a variety of products and serve more customers with pre-sentation and value in mind.



Model SSRC5052 Shown

MODEL	DIMENSIONS (Includes End Panels)
<input type="checkbox"/> SSRC3652	36 x 34.3 x 52.5 (in) 914 x 864 x 1321 (mm)
<input type="checkbox"/> SSRC5052	50 x 34 x 52.5 (in) 1270 x 864 x 1321 (mm)
<input type="checkbox"/> SSRC5952	59 x 34.3 x 52.5 (in) 1499 x 864 x 1321 (mm)
<input type="checkbox"/> SSRC7752	77 x 34.3 x 52.5 (in) 1956 x 864 x 1321 (mm)

STANDARD FEATURES

Convertible Service Top Display

- Divided merchandising area (24" and 36" models have one display area only)
- Clear glass rear sliding doors (24" model has hinged door)
- Tempered lift-up thermopane front glass

Refrigerated Self-Serve Bottom Display

- Steel base construction with black exterior
- Black interior, glass end panels
- Two-tier black display step
- Easily accessible light switch and adjustable power switch located at case rear
- Rear access to refrigeration system for quick and easy service
- Adjustable leg levelers

Refrigeration

- Condensate evaporator provided for a totally self-contained system
- Electronic temperature controls maintain 38°-40° F case temperature.
- Easy clean, rustproof insulated evaporator coil compartment
- Insulated with high-density urethane foam
- R290 Refrigerant
- Thermometer
- Baffle system converts display from non-refrigerated to refrigerated (Service Top Display)

Shelving

- Adjustable black wire shelf

Lighting

- 3500K LED top and shelf Light
- DLC Certified, IP66 rated

Agency Approvals

- UL and UL Sanitation listed
- DOE 2017 Compliant

OPTIONAL ACCESSORIES

For Service Top Display

- ☐ Reflective Rear Doors
- ☐ Glass Shelves

For Self-Service Refrigerated Base

- ☐ Reflective End Glass
- ☐ Special Finish
- ☐ Energy Saving Night Curtain
- ☐ Security Night Cover
- ☐ Solid Rear Sliding Access Doors for Bottom Section
- ☐ Cord & Plug
- ☐ Remote Refrigeration (R449a Refrigerant, EEV Included)
- ☐ Casters (Recessed or 4") or 6" Legs
- ☐ Black Wire or Glass Shelf with Light in Lieu of Display Steps
- ☐ Rear Wrapping Board



WARRANTY*
One year Parts and Labor
2nd thru 5th year part
only service compressor
(U.S.A and Canada)



Note: Information is subject to change at any time.
Visit www.federalind.com for the most current specs.

Revised 7/24/2025

CONVERTIBLE SERVICE OVER REFRIGERATED SELF-SERVE SPECIALTY MERCHANDISER

SIS#

Product Specifications

Intended Environment: Type I - Designed to operate in maximum ambient conditions of 75°F (24°C) and 55% relative humidity unless noted otherwise in system information below.

Zone	Intended Product To Be Displayed	Avg Prod Temp °F/°C
All	Packaged Refrigerated Products	38°F / (3.3°C)

DIMENSIONS: xx"/(mm)

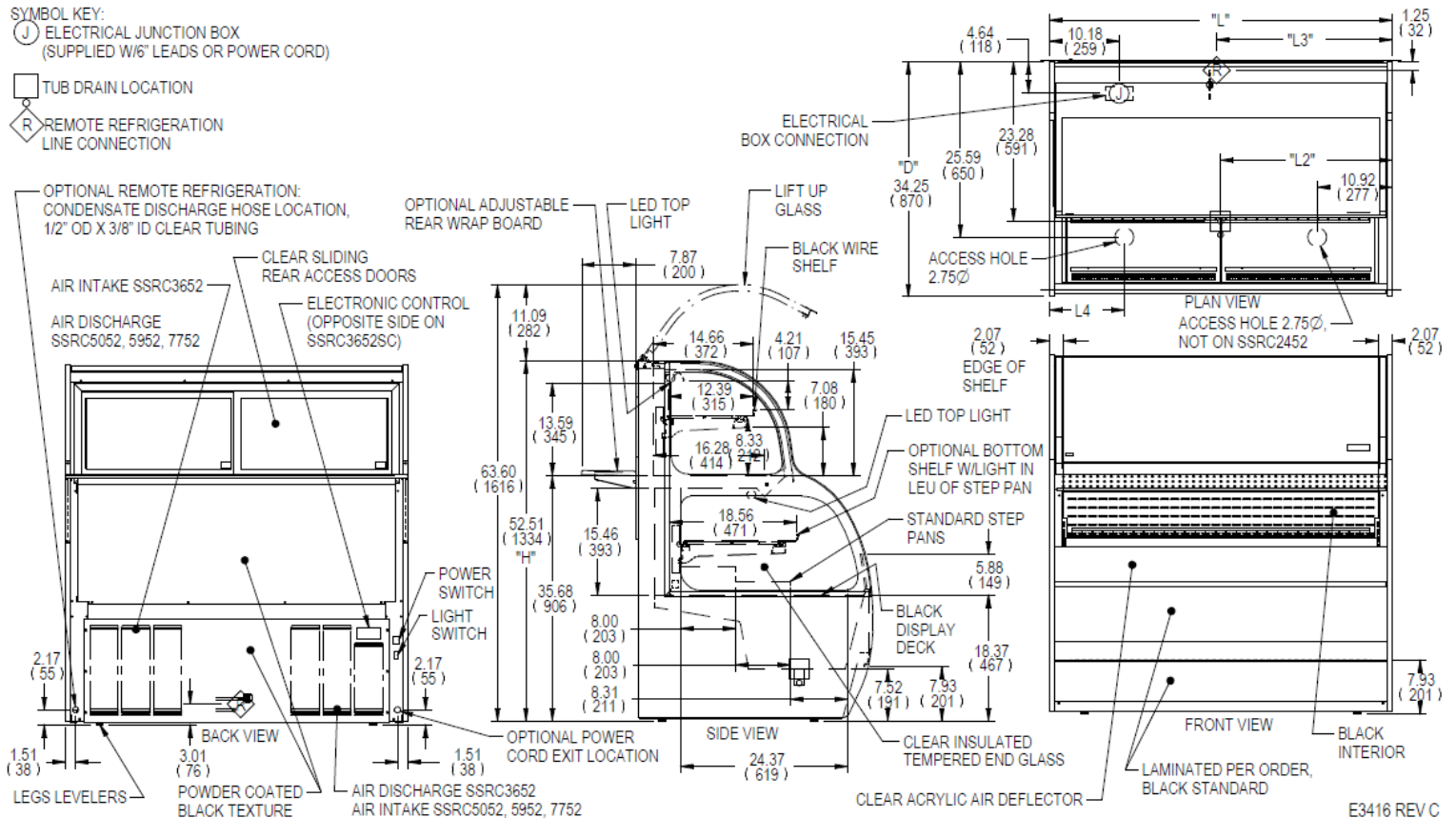
DIMENSION TOLERANCE +/- .19 (4.8)

SYMBOL KEY:

J ELECTRICAL JUNCTION BOX
(SUPPLIED W/6" LEADS OR POWER CORD)

☐ TUB DRAIN LOCATION

R REMOTE REFRIGERATION
LINE CONNECTION



MODEL							# OF TIERS	SHELVING		TOP INTERIOR VOLUME CU FT	BOTTOM INTERIOR VOLUME CU FT	SELF CONTAINED				REFRIGERANT	SHIP WEIGHT LBS	REMOTE								
	DIMENSION							TUB DRAIN	D			L1	PERMANENT CONNECT		CORD & PLUG			PERMANENT CONNECT		REFRIGERANT	BTU'S @+20°	CONDENSATE REMOVAL	SHIP WEIGHT			
	L	D	H	L3	L4	L2							2-WIRE + GROUND					2-WIRE + GROUND						2-WIRE + GROUND		
	in	in	in	in	in	in							in	in				ELECTRICAL	AMPS					MAX FUSE SIZE	AMPS	MAX FUSE SIZE
	mm	mm	mm	mm	mm	mm							mm	mm				mm	mm					mm	mm	mm
SSRC3652	36.00	34.30	52.50	20.92	10.92	5.26	1	12.4	31.75	5.10	8.40	120/60/1	12.7	20	NEMA 5-20	R290	590 LBS	8.5	15	R449a	4,400	CONDENSATE PUMP	530 LBS			
	914	871	1334	531	277	134		315	806																	268 KILO
SSRC5052	50.00	34.30	52.50	25.60	10.92	25.00	1	12.4	45.75	7.10	11.80	208-230/60/1	7.0	15	NEMA 6-15	R290	720 LBS	10.0	15	R449a	5,400	CONDENSATE PUMP	660 LBS			
	1270	871	1334	650	277	635		315	1162															327 KILO	299 KILO	
SSRC5952	59.00	34.30	52.50	26.70	10.92	29.47	1	12.4	54.75	8.50	14.00	208-230/60/1	7.5	15	NEMA 6-15	R290	845 LBS	13.0	15	R449a	6,400	CONDENSATE PUMP	770 LBS			
	1499	871	1334	678	277	749		315	1391															383 KILO	349 KILO	
SSRC7752	77.00	34.30	52.50	26.70	10.92	38.47	1	12.4	72.75	11.20	18.30	208-230/60/1	7.5	15	NEMA 6-15	R290	1010 LBS	13.0	15	R449a	7,400	CONDENSATE PUMP	935 LBS			
	1956	871	1334	678	277	977		315	1848															458 KILO	424 KILO	

- Refrigerated cases are designed to operate in a maximum of 75°F (24°C) ambient and 55% relative humidity.
- Due to continuing engineering improvements, specifications are subject to change without notice.
- IF GFCI is required, a GFI Breaker must be used in lieu of GFCI recepticle.



The Signature of Quality.

FEDERAL INDUSTRIES

A Standex Company

215 Federal Avenue, Belleville, Wisconsin 53508-9201

Phone: 800-356-4206

Fax: 608-424-3234

Email: Geninfo@Federalind.com

Website: Federalind.com