



*The Signature of Quality®*

## FEDERAL INDUSTRIES

A Standex Company

215 Federal Avenue  
Belleville, WI 53508-9201

Phone: 800-356-4206

Fax: 608-424-3234

Email: [geninfo@federalind.com](mailto:geninfo@federalind.com)

Website: [www.federalind.com](http://www.federalind.com)

Project Name: \_\_\_\_\_

Item #: \_\_\_\_\_

Model #: \_\_\_\_\_ Qty: \_\_\_\_\_

Approval: \_\_\_\_\_

AIA#

SIS#

## CONVERTIBLE SERVICE OVER REFRIGERATED SELF-SERVE SPECIALTY MERCHANDISER

Display a variety of products and serve more customers with pre-sentation and value in mind.



Model SSRC5052 Shown

MODEL	DIMENSIONS ( Includes End Panels )
<input type="checkbox"/> <b>SSRC3652</b>	36 x 34 x 52 (in) 914 x 864 x 1321 (mm)
<input type="checkbox"/> <b>SSRC5052</b>	50 x 34 x 52 (in) 1270 x 864 x 1321 (mm)
<input type="checkbox"/> <b>SSRC5952</b>	59 x 34 x 52 (in) 1499 x 864 x 1321 (mm)
<input type="checkbox"/> <b>SSRC7752</b>	77 x 34 x 52 (in) 1956 x 864 x 1321 (mm)

### STANDARD FEATURES

#### Model Features: Self-Serve Bottom Display

- Steel base construction with black exterior
- Black interior, glass end panels
- Two-tier black display step
- Easily accessible light switch and adjustable power switch located at case rear
- Rear access to refrigeration system for quick and easy service
- Adjustable leg levelers

#### Model Features: Service Top Display

- Divided merchandising area (36" models have one display area only)
- Tempered lift-up thermopane front glass

#### Refrigeration

- Condensate evaporator provided for a totally self-contained system
- Electronic temperature controls maintain 38°-40° F case temperature.
- Easy clean, rustproof insulated evaporator coil compartment
- Insulated with high-density urethane foam
- R290 refrigerant
- Thermometer
- Baffle system converts display from non-refrigerated to refrigerated ( Service Top Display )

#### Shelving

- Adjustable black wire shelf

#### Lighting

- 3500K LED top and shelf light
- DLC Certified, IP66 rated

#### Agency Approvals

- UL and UL Sanitation listed
- DOE 2017 Compliant

### OPTIONAL ACCESSORIES

- ☐ Reflective End Glass

#### For Self-Serve Refrigerated Base

- ☐ Special Finish
- ☐ Energy Saving Night Curtain
- ☐ Security Night Cover
- ☐ Solid Rear Sliding Access Doors for Bottom Section
- ☐ Cord & Plug
- ☐ Remote Refrigeration (R449a Refrigerant, EEV Included)

- ☐ Black Wire or Glass Shelf with Light in Lieu of Display Steps

- ☐ Rear Wrapping Board

#### For Service Top Display

- ☐ Reflective Rear Doors
- ☐ Glass Shelves
- ☐ Casters (Recessed or 4") or 6" Legs



**WARRANTY\***  
One year Parts and Labor  
2nd thru 5th year part  
only service compressor  
(U.S.A and Canada)



Note: Information is subject to change at any time.  
Visit [www.federalind.com](http://www.federalind.com) for the most current specs.

Revised 8/21/2025

AIA#

# CONVERTIBLE SERVICE OVER REFRIGERATED SELF-SERVE SPECIALTY MERCHANDISER

SIS#

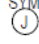
## Product Specifications


Intended Environment: Type I - Designed to operate in maximum ambient conditions of 75°F (24°C) and 55% relative humidity unless noted otherwise in system information below.


Zone	Intended Product To Be Displayed	Avg Prod Temp °F/°C
All	Packaged Refrigerated Products	38°F / (3.3°C)

DIMENSION: xx"/(mm)

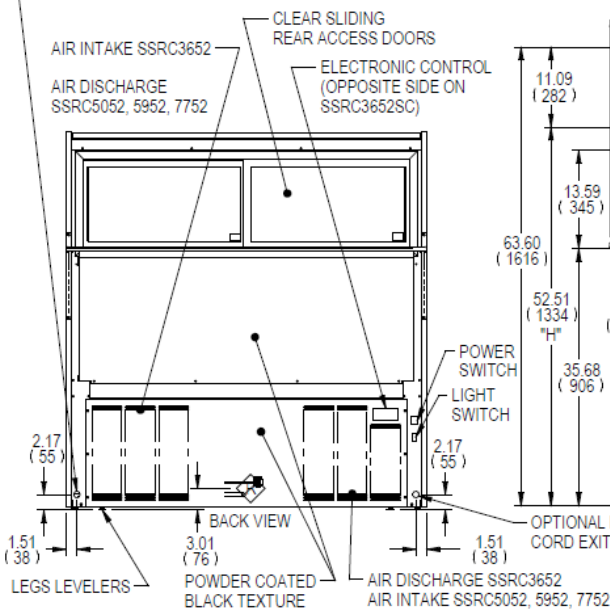
DIMENSION TOLERANCE +/- 0.25 (6.4)

SYMBOL KEY:  
 ELECTRICAL JUNCTION BOX  
 (SUPPLIED W/6" LEADS OR POWER CORD)

 TUB DRAIN LOCATION

 REMOTE REFRIGERATION  
LINE CONNECTION

OPTIONAL REMOTE REFRIGERATION:  
CONDENSATE DISCHARGE HOSE LOCATION,  
1/2" OD X 3/8" ID CLEAR TUBING



MODEL	DIMENSION						TUB DRAIN	SHELVING		TOP INTERIOR VOLUME CU FT	BOTTOM INTERIOR VOLUME CU FT	SELF CONTAINED				SHIP WEIGHT LBS	REMOTE				SHIP WEIGHT LBS																																																																																																																																																																																																																																																																																																																																																																																																																																																																																																																																																																																																																																																																																																																																																																																																																																																																																																																																																																																																																																																																																																								
	L	D	H	L3	L4	L2		# OF TIER	D			L1	PERMANENT CONNECT		OPTIONAL NEMA CORD & PLUG		REFRIGERANT	PERMANENT CONNECT		REFRIGERANT		BTU'S @+20"	CONDENSATE PUMP REMOVAL																																																																																																																																																																																																																																																																																																																																																																																																																																																																																																																																																																																																																																																																																																																																																																																																																																																																																																																																																																																																																																																																																																						
													2-WIRE + GROUND					2-WIRE + GROUND																																																																																																																																																																																																																																																																																																																																																																																																																																																																																																																																																																																																																																																																																																																																																																																																																																																																																																																																																																																																																																																																																																											
													ELECTRICAL	AMPS				MAX FUSE SIZE	2-WIRE + GROUND					KILLO	AMPS	MAX FUSE SIZE																																																																																																																																																																																																																																																																																																																																																																																																																																																																																																																																																																																																																																																																																																																																																																																																																																																																																																																																																																																																																																																																																																			
in	in	in	in	in	in	in	in	in	in	in	in	in	in	in	in	in	in	in	in	in	in	in	in	in	in	in	in	in	in	in	in	in	in	in	in	in	in	in	in	in	in	in	in	in	in	in	in	in	in	in	in	in	in	in	in	in	in	in	in	in	in	in	in	in	in	in	in	in	in	in	in	in	in	in	in	in	in	in	in	in	in	in	in	in	in	in	in	in	in	in	in	in	in	in	in	in	in	in	in	in	in	in	in	in	in	in	in	in	in	in	in	in	in	in	in	in	in	in	in	in	in	in	in	in	in	in	in	in	in	in	in	in	in	in	in	in	in	in	in	in	in	in	in	in	in	in	in	in	in	in	in	in	in	in	in	in	in	in	in	in	in	in	in	in	in	in	in	in	in	in	in	in	in	in	in	in	in	in	in	in	in	in	in	in	in	in	in	in	in	in	in	in	in	in	in	in	in	in	in	in	in	in	in	in	in	in	in	in	in	in	in	in	in	in	in	in	in	in	in	in	in	in	in	in	in	in	in	in	in	in	in	in	in	in	in	in	in	in	in	in	in	in	in	in	in	in	in	in	in	in	in	in	in	in	in	in	in	in	in	in	in	in	in	in	in	in	in	in	in	in	in	in	in	in	in	in	in	in	in	in	in	in	in	in	in	in	in	in	in	in	in	in	in	in	in	in	in	in	in	in	in	in	in	in	in	in	in	in	in	in	in	in	in	in	in	in	in	in	in	in	in	in	in	in	in	in	in	in	in	in	in	in	in	in	in	in	in	in	in	in	in	in	in	in	in	in	in	in	in	in	in	in	in	in	in	in	in	in	in	in	in	in	in	in	in	in	in	in	in	in	in	in	in	in	in	in	in	in	in	in	in	in	in	in	in	in	in	in	in	in	in	in	in	in	in	in	in	in	in	in	in	in	in	in	in	in	in	in	in	in	in	in	in	in	in	in	in	in	in	in	in	in	in	in	in	in	in	in	in	in	in	in	in	in	in	in	in	in	in	in	in	in	in	in	in	in	in	in	in	in	in	in	in	in	in	in	in	in	in	in	in	in	in	in	in	in	in	in	in	in	in	in	in	in	in	in	in	in	in	in	in	in	in	in	in	in	in	in	in	in	in	in	in	in	in	in	in	in	in	in	in	in	in	in	in	in	in	in	in	in	in	in	in	in	in	in	in	in	in	in	in	in	in	in	in	in	in	in	in	in	in	in	in	in	in	in	in	in	in	in	in	in	in	in	in	in	in	in	in	in	in	in	in	in	in	in	in	in	in	in	in	in	in	in	in	in	in	in	in	in	in	in	in	in	in	in	in	in	in	in	in	in	in	in	in	in	in	in	in	in	in	in	in	in	in	in	in	in	in	in	in	in	in	in	in	in	in	in	in	in	in	in	in	in	in	in	in	in	in	in	in	in	in	in	in	in	in	in	in	in	in	in	in	in	in	in	in	in	in	in	in	in	in	in	in	in	in	in	in	in	in	in	in	in	in	in	in	in	in	in	in	in	in	in	in	in	in	in	in	in	in	in	in	in	in	in	in	in	in	in	in	in	in	in	in	in	in	in	in	in	in	in	in	in	in	in	in	in	in	in	in	in	in	in	in	in	in	in	in	in	in	in	in	in	in	in	in	in	in	in	in	in	in	in	in	in	in	in	in	in	in	in	in	in	in	in	in	in	in	in	in	in	in	in	in	in	in	in	in	in	in	in	in	in	in	in	in	in	in	in	in	in	in	in	in	in	in	in	in	in	in	in	in	in	in	in	in	in	in	in	in	in	in	in	in	in	in	in	in	in	in	in	in	in	in	in	in	in	in	in	in	in	in	in	in	in	in	in	in	in	in	in	in	in	in	in	in	in	in	in	in	in	in	in	in	in	in	in	in	in	in	in	in	in	in	in	in	in	in	in	in	in	in	in	in	in	in	in	in	in	in	in	in	in	in	in	in	in	in	in	in	in	in	in	in	in	in	in	in	in	in	in	in	in	in	in	in	in	in	in	in	in	in	in	in	in	in	in	in	in	in	in	in	in	in	in	in	in	in	in	in	in	in	in	in	in	in	in	in	in	in	in	in	in	in	in	in	in	in	in	in	in	in	in	in	in	in	in	in	in	in	in	in	in	in	in	in	in	in	in	in	in	in	in	in	in	in	in	in	in	in	in	in	in	in	in	in	in	in	in	in	in	in	in	in	in	in	in	in	in	in	in	in	in	in	in	in	in	in	in	in	in	in	in	in	in	in	in	in	in	in	in	in	in	in	in	in	in	in	in	in	in	in	in	in	in	in	in	in	in	in	in	in	in	in	in	in	in	in	in	in	in	in	in	in	in	in	in	in	in	in	in	in	in	in	in	in	in	in	in	in	in	in	in	in	in	in	in	in	in	in	in	in	in	in	in	in	in	in	in	in	in	in	in	in	in	in	in	in	in	in	in	in	in	in	in	in	in	in	in	in	in	in	in	in

- Refrigerated cases are designed to operate in a maximum of 75°F (24°C) ambient and 55% relative humidity.
- Due to continuing engineering improvements, specifications are subject to change without notice.
- IF GFCI is required, a GFI Breaker must be used in lieu of GFCI receptacle.



The Signature of Quality®

FEDERAL INDUSTRIES

A Standex Company

215 Federal Avenue, Belleville, Wisconsin 53508-9201

Phone: 800-356-4206

Fax: 608-424-3234

Email: Geninfo@Federalind.com

Website: Federalind.com