



The Signature of Quality®

FEDERAL INDUSTRIES

A Standex Company

215 Federal Avenue
Belleville, WI 53508-9201

Phone: 800-356-4206

Fax: 608-424-3234

Email: geninfo@federalind.com

Website: www.federalind.com

Project Name: _____

Item #: _____

Model #: _____ Qty: _____

Approval: _____

AIA#

SIS#

SELF-SERVE REFRIGERATED PREPARED FOODS MERCHANDISER

Designed for those customers looking for up-market styling for maximum visual appeal that will drive product sales.



Model SSRPF5952 Shown

MODEL	DIMENSIONS (Includes End Panels)
<input type="checkbox"/> SSRPF3652	36.2 x 34.3 x 52.3 (in) 919 x 871 x 1328 (mm)
<input type="checkbox"/> SSRPF5052	50.2 x 34.3 x 52.3 (in) 1275 x 871 x 1328 (mm)
<input type="checkbox"/> SSRPF5952	59.2 x 34.3 x 52.3 (in) 1504 x 871 x 1328 (mm)
<input type="checkbox"/> SSRPF7752	77.2 x 34.3 x 52.3 (in) 1961 x 871 x 1328 (mm)

STANDARD FEATURES

Model Features

- Steel base construction with black laminated exterior. Other finishes optional.
- Black interior, glass end panels
- Easily accessible light and power switch
- Rear access to refrigeration system for quick and easy service
- The rear of the display needs to be 6" from wall.
- Adjustable leg levelers

Refrigeration

- On-demand PTC condensate evaporator provided for a totally self-contained system
- Electronic temperature controls maintain 38°-40° F with on-demand defrost. Note: Case temperature will vary if the air curtain is disrupted.
- Easy clean, rustproof insulated evaporator coil compartment
- R290 Refrigerant
- Thermometer

Shelving

- Three tiers adjustable metal shelves

Lighting

- LED top light and shelf lights **Agency**

Approvals

- UL and UL Sanitation listed
- DOE 2017 Compliant

OPTIONAL ACCESSORIES

- | | |
|---|--|
| <input type="checkbox"/> Stainless Steel Exterior | <input type="checkbox"/> Cord & Plug |
| <input type="checkbox"/> Stainless Steel Top | <input type="checkbox"/> Remote Refrigeration (EEV Included) |
| <input type="checkbox"/> Reflective End Glass | <input type="checkbox"/> 4" and 2 1/2" Recessed Casters |
| <input type="checkbox"/> White Interior (Including Shelves) | <input type="checkbox"/> Condensate Pump |
| <input type="checkbox"/> Stainless Steel Interior (Including Shelves) | <input type="checkbox"/> Joining Kit for Continuous Line-ups |
| <input type="checkbox"/> Special Exterior Finish | <input type="checkbox"/> Front Basket for Non-Refrigerated Merchandise |
| <input type="checkbox"/> Glass Shelves | <input type="checkbox"/> 6" Legs |
| <input type="checkbox"/> Stainless Steel Shelves | <input type="checkbox"/> Seismic Legs |
| <input type="checkbox"/> Energy Saving Night Curtain | |
| <input type="checkbox"/> Security Night Cover | |
| <input type="checkbox"/> Solid Rear Sliding Access Doors | |



WARRANTY*
One year Parts and Labor
2nd thru 5th year part
only service compressor
(U.S.A and Canada)



Note: Information is subject to change at any time.
Visit www.federalind.com for the most current specs.

Revised 07/23/2025

AIA#

SELF-SERVE REFRIGERATED PREPARED FOODS MERCHANDISER

SIS#

Specifications

Intended Environment: Type I - Designed to operate in maximum ambient conditions of 75°F (24°C) and 55% relative humidity unless noted otherwise in system information below.

Zone	Intended Product To Be Displayed	Avg Prod Temp °F/°C
All	Packaged Refrigerated Products	38°F / (3.3°C)

DIMENSION: xx"/(mm)

DIMENSION TOLERANCE +/- 0.25 (6.4)

SYMBOL KEY:

Ⓜ ELECTRICAL JUNCTION BOX
(SUPPLIED W/6 LEADS OR POWER CORD)

□ TUB DRAIN LOCATION

Ⓡ REMOTE REFRIGERATION
LINE CONNECTION

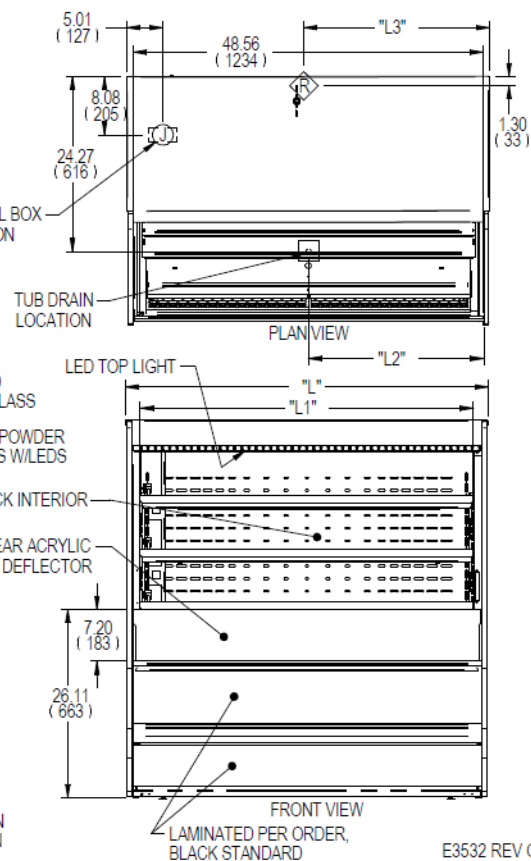
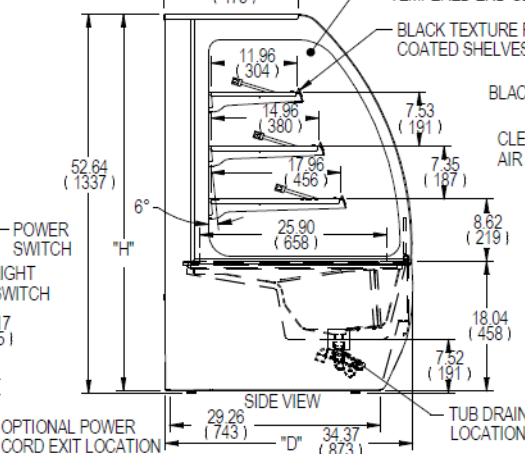
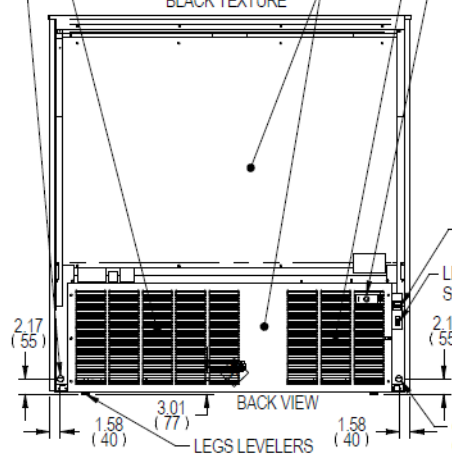
OPTIONAL REMOTE REFRIGERATION:
CONDENSATE DISCHARGE HOSE LOCATION,
1/2" OD X 3/8" ID CLEAR TUBING

AIR INTAKE SSRPF3652
AIR DISCHARGE SSRPF5052, 5952, 7752

AIR DISCHARGE SSRPF3652
AIR INTAKE SSRPF5052, 5952, 7752

POWDER COATED
BLACK TEXTURE

ELECTRONIC CONTROL
(OPPOSITE SIDE ON
SSRPF3652SC)



E3532 REV G

MODEL	DIMENSION					TUB DRAIN	SHELVING	INTERIOR VOLUME CU FT	SELF CONTAINED				REFRIGERANT	CONDENSATE 2-REMOVAL	SHIP WEIGHT	REMOTE					
	L		D	H	L2	# OF TIERS	L1 in mm		PERMANENT CONNECT 2-WIRE + GROUND		OPTIONAL NEMA CORD & PLUG 2-WIRE + GROUND	PERMANENT CONNECT 2-WIRE + GROUND				REFRIGERANT	BTU'S @+20°	CONDENSATE REMOVAL	SHIP WEIGHT		
	in	in	in	in	ELECTRICAL				AMPS	MAX FUSE SIZE		LBS								120/60/1	LBS
	mm	mm	mm	mm	mm				mm	mm		mm								mm	mm
	mm	mm	mm	mm	mm				mm	mm		mm								mm	mm
SSRPF3652	36.2	34.3	52.3	20.92	4.45	3	32.3 820	12.21	120/60/1	12.7	20	NEMA 5-20P	R290	CONDENSATE PAN	590 LBS	8.5	15	R449a	4,400	CONDENSATE PUMP	530 LBS
	919	871	1328	531	113										268 KILO						240 KILO
SSRPF5052	50.2	34.3	52.3	25.60	24.26	3	46.3 1176	17.20	208- 240/60/1	7	15	NEMA 6-15P	R290	CONDENSATE PAN	720 LBS	9.5	15	R449a	5,400	CONDENSATE PUMP	660 LBS
	1275	871	1328	650	616										327 KILO						299 KILO
SSRPF5952	59.2	34.3	52.3	26.70	28.76	3	55.2 1402	20.40	208- 240/60/1	7.5	15	NEMA 6-15P	R290	CONDENSATE PAN	845 LBS	13.0	15	R449a	6,400	CONDENSATE PUMP	770 LBS
	1504	871	1328	678	730										383 KILO						349 KILO
SSRPF7752	77.2	34.3	52.3	26.70	37.76	3	73.2 1859	26.82	208- 240/60/1	7.5	15	NEMA 6-15P	R290	CONDENSATE PAN	1010 LBS	13.5	15	R449a	7,400	CONDENSATE PUMP	935 LBS
	1961	871	1328	678	959										458 KILO						424 KILO

- Case temperature will vary if the air curtain is disrupted.
- The rear of the unit needs to be 6" from a wall.
- Electrical Requirement - The minimum circuit ampacity and maximum fuse size is 20 amps.
- Refrigerated cases are designed to operate in a maximum of 75°F (24°C) ambient and 55% relative humidity.
- Due to continuing engineering improvements, specifications are subject to change without notice.



The Signature of Quality

FEDERAL INDUSTRIES

A Standex Company

215 Federal Avenue, Belleville, Wisconsin 53508-9201

Phone: 800-356-4206

Fax: 608-424-3234

Email: Geninfo@Federalind.com

Website: Federalind.com