



The Signature of Quality

FEDERAL INDUSTRIES

A Standex Company

215 Federal Avenue
Belleville, WI 53508-9201

Phone: 800-356-4206
Fax: 608-424-3234
Email: geninfo@federalind.com
Website: www.federalind.com

Project Name: _____

Item #: _____

Model #: _____ Qty: _____

Approval: _____

AIA#

SIS#

VERSATILE SERVICE TOP OVER REFRIGERATED SELF-SERVE DELI

Designed for those customers looking for up-market styling for maximum visual appeal that will drive product sales.

Sneeze Guard Accessory



Model SSRVS5942 Shown

| MODEL | DIMENSIONS (Includes End Panels) |
|------------------------------------|---|
| <input type="checkbox"/> SSRVS3642 | 36.2 x 34.3 x 42.6 (in) 919 x 871 x 1082 (mm) |
| <input type="checkbox"/> SSRVS5042 | 50.2 x 34.3 x 42.6 (in) 1275 x 871 x 1082 (mm) |
| <input type="checkbox"/> SSRVS5942 | 59.2 x 34.3 x 42.6 (in) 1504 x 871 x 1082 (mm) |
| <input type="checkbox"/> SSRVS7742 | 77.2 x 34.3 x 42.6 (in) 1961 x 871 x 1082 (mm) |

STANDARD FEATURES

Model Features

- All-steel base construction with black laminate exterior.
- Black interior, glass end panels
- Easily accessible light and power switch
- Rear access to refrigeration system for quick and easy service
- Stainless steel top service area with extension
- Adjustable leg levelers
- Power outlet on back

Refrigeration

- On-Demand PTC condensate evaporator provided for a totally self-contained system
- Electronic temperature controls maintain 38°-40° F with on-demand defrost
- Easy clean, rustproof insulated evaporator coil compartment
- R290 refrigerant
- Thermometer

Shelving

- Two tiers adjustable metal shelves

Lighting

- 3500k shielded top LED light and undershelf lights

Agency Approvals

- UL and UL Sanitation listed
- DOE 2017 Compliant

OPTIONAL ACCESSORIES

For Self-Service Refrigerated Base

- ☐ Special Exterior Finish
- ☐ Stainless Steel Exterior
- ☐ Glass Shelves
- ☐ White or Stainless Interior (Including Shelves)
- ☐ Energy Saving Night Curtain
- ☐ Reflective End Glass
- ☐ Solid Ends
- ☐ Security Night Cover
- ☐ Solid Rear Sliding Access Doors
- ☐ Remote Refrigeration (EEV Included)

- ☐ Recessed Casters
- ☐ Front Basket for Non-Refrigerated Merchandise
- ☐ Rear Wrapping Board
- ☐ Cord and Plug
- ☐ 6" Legs
- ☐ Condensate Pump
- ☐ Seismic Legs
- ☐ Joining Kit

For Service Top Display

- ☐ Sneeze Guard with Top Service Shelf
- ☐ Sneeze Guard with Two Bakery Shelves
- ☐ Warming Shelf



WARRANTY*
One year Parts and Labor
2nd thru 5th year part
only service compressor
(U.S.A and Canada)

Note: Information is subject to change at any time.
Visit www.federalind.com for the most current specs.

Revised 07/23/2025

AIA#

VERSATILE SERVICE TOP OVER REFRIGERATED SELF-SERVE DELI

SIS#

Product Specifications

Intended Environment: Type I - Designed to operate in maximum ambient conditions of 75°F (24°C) and 55% relative humidity unless noted otherwise in system information below.

| Zone | Intended Product To Be Displayed | Avg Prod Temp °F/°C |
|------|----------------------------------|---------------------|
| All | Packaged Refrigerated Products | 38°F / (3.3°C) |

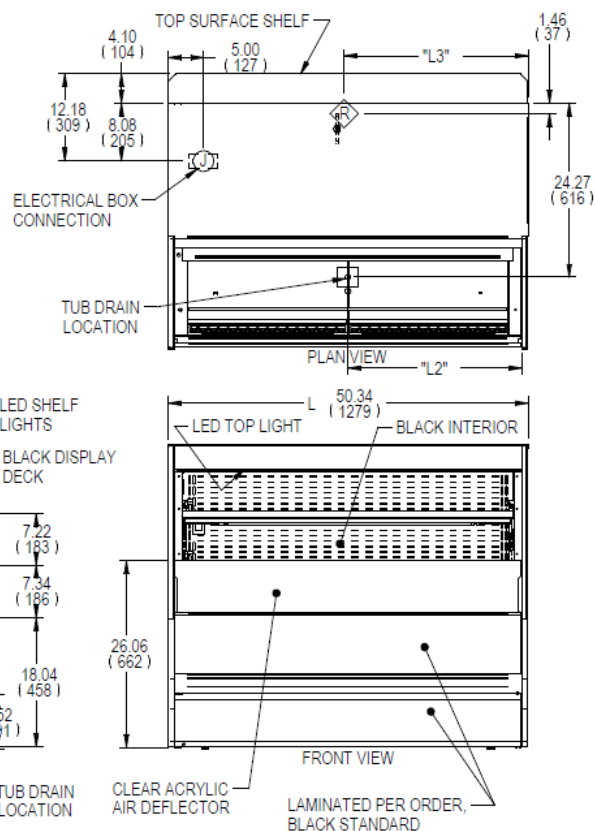
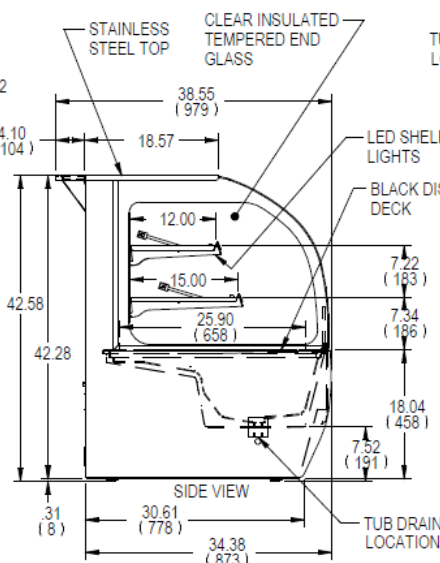
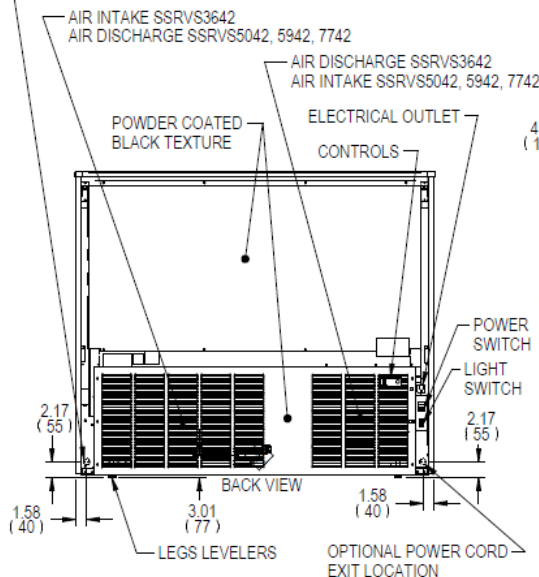
DIMENSION: xx"/(mm)

DIMENSION TOLERANCE +/- 0.25 (6.4)

SYMBOL KEY:

J ELECTRICAL JUNCTION BOX
(SUPPLIED W/6" LEADS OR POWER CORD)

TUB DRAIN LOCATION

R REMOTE REFRIGERATION
LINE CONNECTIONOPTIONAL REMOTE REFRIGERATION:
CONDENSATE DISCHARGE HOSE LOCATION,
1/2" OD X 3/8" ID CLEAR TUBING

E3531 REV D

| MODEL | DIMENSION | | | | | TUB DRAIN | SHELVING | | INTERIOR VOLUME CU FT | PERMANENT CONNECT | | | OPTIONAL NEMA | REFRIGERANT | CONDENSATE REMOVAL | SHIP | PERMANENT CONNECT | | REFRIGERANT | BTU'S @+20" | CONDENSATE REMOVAL | SHIP |
|----------|-----------|------|------|-------|-------|---------------|----------|------|--------------------------|-------------------|------|------------------|--------------------|-------------|-----------------------|----------|--------------------|------|-------------|----------------|-----------------------|---------|
| | L | D | H | L3 | L2 | # OF TIERS | D | L | | 2-WIRE + GROUND | | CORD & PLUG | 2-WIRE + GROUND | | | WEIGHT | 2-WIRE + GROUND | | | | | WEIGHT |
| | in | in | in | in | in | | in | in | | ELECTRICAL | AMPS | MAX FUSE SIZE | 2-WIRE + GROUND | | | LBS | 120/60/1 | | | | | LBS |
| | mm | mm | mm | mm | mm | | mm | mm | | | | | | | | KILO | AMPS MAX FUSE SIZE | | | | | KILO |
| | SSRV3642 | 36.2 | 34.3 | 42.6 | 20.92 | | 4.45 | 2 | | | 32.3 | 10.80 | 120/60/1 | | | 12.7 | 20 | 6-20 | | | | R290 |
| 919 | | 871 | 1082 | 531 | 113 | 0 | 820 | | | | | | | | 268 KILO | | | | | 240 KILO | | |
| SSRV5042 | 50.2 | 34.3 | 42.6 | 25.60 | 24.26 | 2 | | 46.3 | 15.50 | 208-240/60/1 | 7.0 | 15 | 6-15 | R290 | CONDENSATE PAN | 720 LBS | 8.5 | 15 | R449a | 5,400 | CONDENSATE PUMP | 660 LBS |
| | 1275 | 871 | 1082 | 650 | 616 | | 0 | 1176 | | | | | | | | | | | | | | |
| SSRV5942 | 59.2 | 34.3 | 42.6 | 26.70 | 28.76 | 2 | | 55.2 | 18.60 | 208-240/60/1 | 7.5 | 15 | 6-15 | R290 | CONDENSATE PAN | 845 LBS | 8.5 | 15 | R449a | 6,400 | CONDENSATE PUMP | 770 LBS |
| | 1504 | 871 | 1082 | 678 | 730 | | 0 | 1402 | | | | | | | | | | | | | | |
| SSRV5742 | 77.2 | 34.3 | 42.6 | 26.70 | 37.76 | 2 | | 73.2 | 24.60 | 208-240/60/1 | 7.5 | 15 | 6-15 | R290 | CONDENSATE PAN | 1010 LBS | 8.5 | 15 | R449a | 7,400 | CONDENSATE PUMP | 935 LBS |
| | 1961 | 871 | 1082 | 678 | 959 | | 0 | 1859 | | | | | | | | | | | | | | |

* Plus general receptacle 120V, 15AMP. (2nd circuit required)

- Refrigerated cases are designed to operate in a maximum of 75°F (24°C) ambient and 55% relative humidity.
- Due to continuing engineering improvements, specifications are subject to change without notice.



The Signature of Quality®

FEDERAL INDUSTRIES

A Standex Company

215 Federal Avenue, Belleville, Wisconsin 53508-9201

Phone: 800-356-4206

Fax: 608-424-3234

Email: Geninfo@Federalind.com

Website: Federalind.com