



The Signature of Quality

FEDERAL INDUSTRIES

A Standex Company
215 Federal Avenue
Belleville, WI 53508-9201
Phone: 800-356-4206
Fax: 608-424-3234
Email: geninfo@federalind.com
Website: www.federalind.com

Project Name: \_\_\_\_\_

AIA#

Item #: \_\_\_\_\_

Model #: \_\_\_\_\_ Qty: \_\_\_\_\_

SIS#

Approval: \_\_\_\_\_

REFRIGERATED SELF-SERVE COUNTER TOP MERCHANDISER



MODEL

DIMENSIONS

( Includes End Panels )

TSSM2454

24 x 28 x 54 (in)
610 x 711 x 1372 (mm)



Shown with optional stainless exterior and interior finish

OPTIONAL ACCESSORIES

- Stainless Steel Exterior and Interior
Stainless Steel Shelving
220V/50hz and 230V/60hz models available

STANDARD FEATURES

Model Features

- Black exterior and galvanized steel back
Stainless steel slanted display deck, stainless steel interior
Choice of 3 standard exterior colors (black, white powder coated or grain stainless steel finishes)
Side Air Intake & Top Discharge
Condenser Air Filter
Energy-saving night curtain
Black end panels with insulated glasspanes, argon filled
Cord and plug, NEMA 5-15P 90° Plug
Insulated with high-density urethane foam

Refrigeration

- Condensate pump provided
Electronic temperature controls maintain 38°-40° F / 3.3°-4.4°C case temperature. Note: Case temperature will vary if the air curtain is disrupted.
Coated Evaporator Coil
On-Demand Frost
Thermometer

Shelving

- Two adjustable stainless-steel shelves with 1 1/8" (28 mm) price tag molding. Shelves can be flat or slanted downwards at 10°

Lighting

- Top LED light and LED Shelf lights- 3500K.
IP66 rated

Agency Approvals

- UL Safety and UL Sanitation listed
DOE 2017 Compliant



WARRANTY\*
One year Parts and Labor (U.S.A and Canada)



Note: Information is subject to change at any time. Visit www.federalind.com for the most current specs.

AIA#

## REFRIGERATED SELF-SERVE COUNTER TOP MERCHANDISE

SIS#

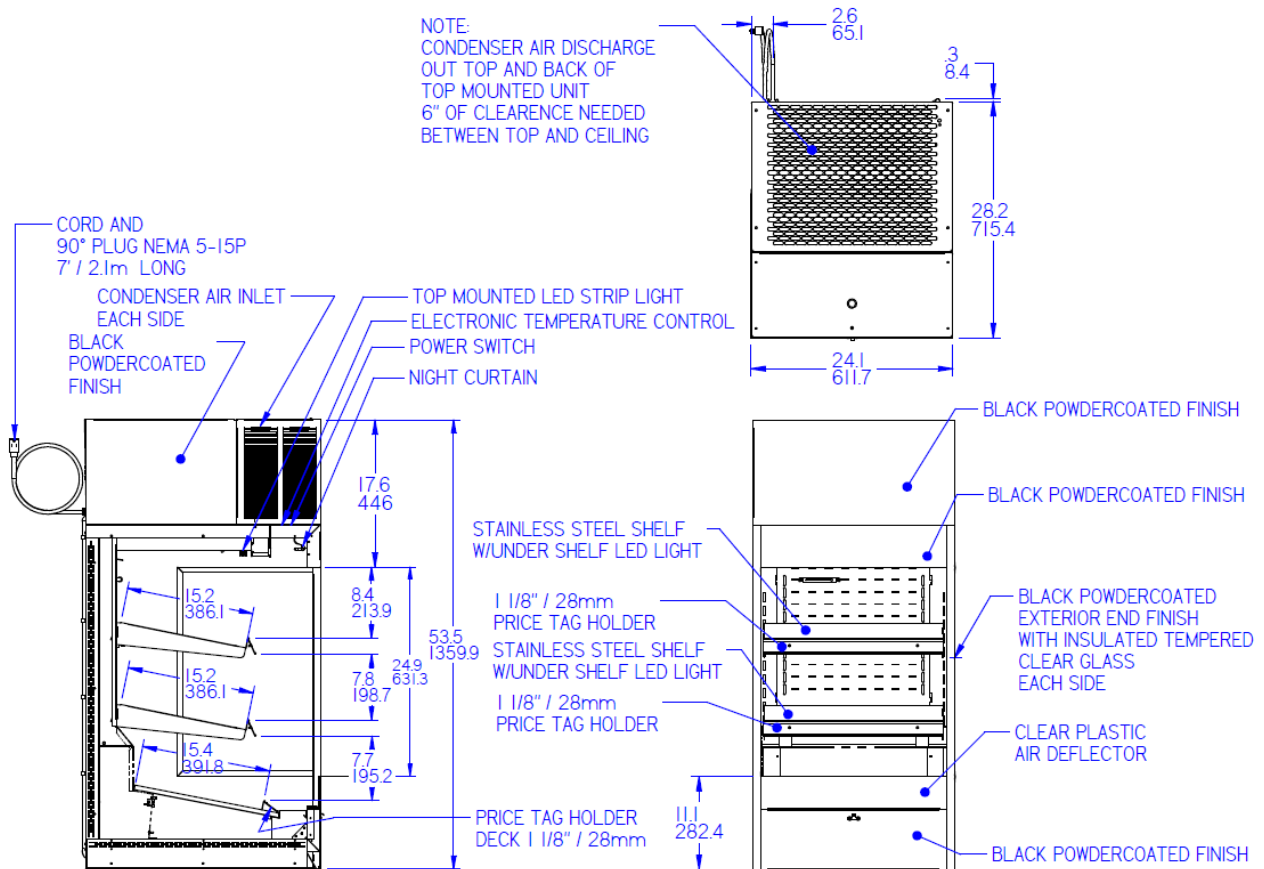
## Product Specifications

Intended Environment: Type I - Designed to operate in maximum ambient conditions of 75°F (24°C) and 55% relative humidity unless noted otherwise in system information below.

Zone	Intended Product To Be Displayed	Avg Prod Temp °F/°C
All	Packaged Refrigerated Products	38°F / (3.3°C)

DIMENSION: xx"/(mm)

DIMENSION TOLERANCE +/- 0.25 (6.4)



MODEL	DIMENSIONS				SHIPPING WHT		SHELVING	SELF CONTAINED	H.P.	OPTIONAL NEMA PLUG
	L	D	H1	UNITS	LBS	KILO		VOLTAGE		CONFIG (SC)
TSSM2454	24	28	54	in.	250	113	2 (15 x 22) in. (381 x 559) mm.	120/60/1	1/2 HP	NEMA 5-15P
	610	711	1372	mm.						

- Case temperature will vary if the air curtain is disrupted.
- Refrigerated cases are designed to operate in a maximum of 75°F (24°C) ambient and 55% relative humidity.
- Due to continuing engineering improvements, specifications are subject to change without notice.
- Condensate Pump Drain Hose must be routed to a remote drain at installation.

DOE 2017  
Energy Efficiency  
Compliant

## FEDERAL INDUSTRIES

A Standex Company

215 Federal Avenue, Belleville, WI 53508-9201

PHONE: 800-356-4206

E-MAIL: [geninfo@federalind.com](mailto:geninfo@federalind.com)

FAX: 608-424-3234

WEBSITE: [www.federalind.com](http://www.federalind.com)

The Signature of Quality®