



The Signature of Quality®

### FEDERAL INDUSTRIES

A Standex Company  
215 Federal Avenue  
Belleville, WI 53508-9201

Phone: 800-356-4206  
Fax: 608-424-3234  
Email: geninfo@federalind.com  
Website: www.federalind.com

Project Name: \_\_\_\_\_

Item #: \_\_\_\_\_

Model #: \_\_\_\_\_ Qty: \_\_\_\_\_

Approval: \_\_\_\_\_

AIA#

SIS#

## UNDER COUNTER - Curved Ends, Refrigerated, Self-Serve Display Case

Incorporate into your own counter to drive product sales. The under counter display case will entice customers with last minute impulse sales through visual appeal.



Shown with optional accessories

MODEL	DIMENSIONS ( Includes End Panels )
<input type="checkbox"/> UCR3633C	35.7 x 34 x 32.5 (in) 907 x 864 x 826 (mm)
<input type="checkbox"/> UCR4833C	47.7 x 34 x 32.5 (in) 1212 x 864 x 826 (mm)
<input type="checkbox"/> UCR6033C	59.7 x 34 x 32.5 (in) 1516 x 864 x 826 (mm)
<input type="checkbox"/> UCR7233C	71.7 x 34 x 32.5 (in) 1821 x 864 x 826(mm)

### STANDARD FEATURES

#### Model Features

- Black powder coated steel base
- Black interior back panel
- Curved ends
- Black top
- Black 2 step riser
- Black laminate exterior. Other finishes optional
- Light and power switch on back of case
- Front access to refrigeration system for quick and easy service
- Rear air intake and discharge
- Cord & plug
- Adjustable leg levelers
- Recessed casters

#### Refrigeration

- On-Demand PTC condensate evaporator provided for a totally self-contained system
- Electronic temperature controls maintain 38°-40°F
- Easy clean, rustproof insulated evaporator coil compartment
- Rear condensing unit air intake & discharge
- R290 refrigerant

#### Lighting

- LED top light

#### Agency Approvals

- UL, C-UL and UL Sanitation listed to NSF-7, Type II conditions
- DOE 2017 compliant

### OPTIONAL ACCESSORIES

- White or stainless interior (Including step riser or shelf)
- Glass, stainless steel, white or black solid shelf w/ LED light
- Special exterior finish
- Stainless Exterior including Top
- Reflective end glass panels
- Energy saving night curtain
- Security night cover
- Condensate pump
- Rear door (available with single step riser)
- 6" Legs
- 4" Casters
- Rear air intake/ front discharge



WARRANTY\*  
One year Parts and Labor  
2nd thru 5th year part  
only service compressor  
(U.S.A and Canada)



Note: Information is subject to change at any time.  
Visit [www.federalind.com](http://www.federalind.com) for the most current specs.

AIA#

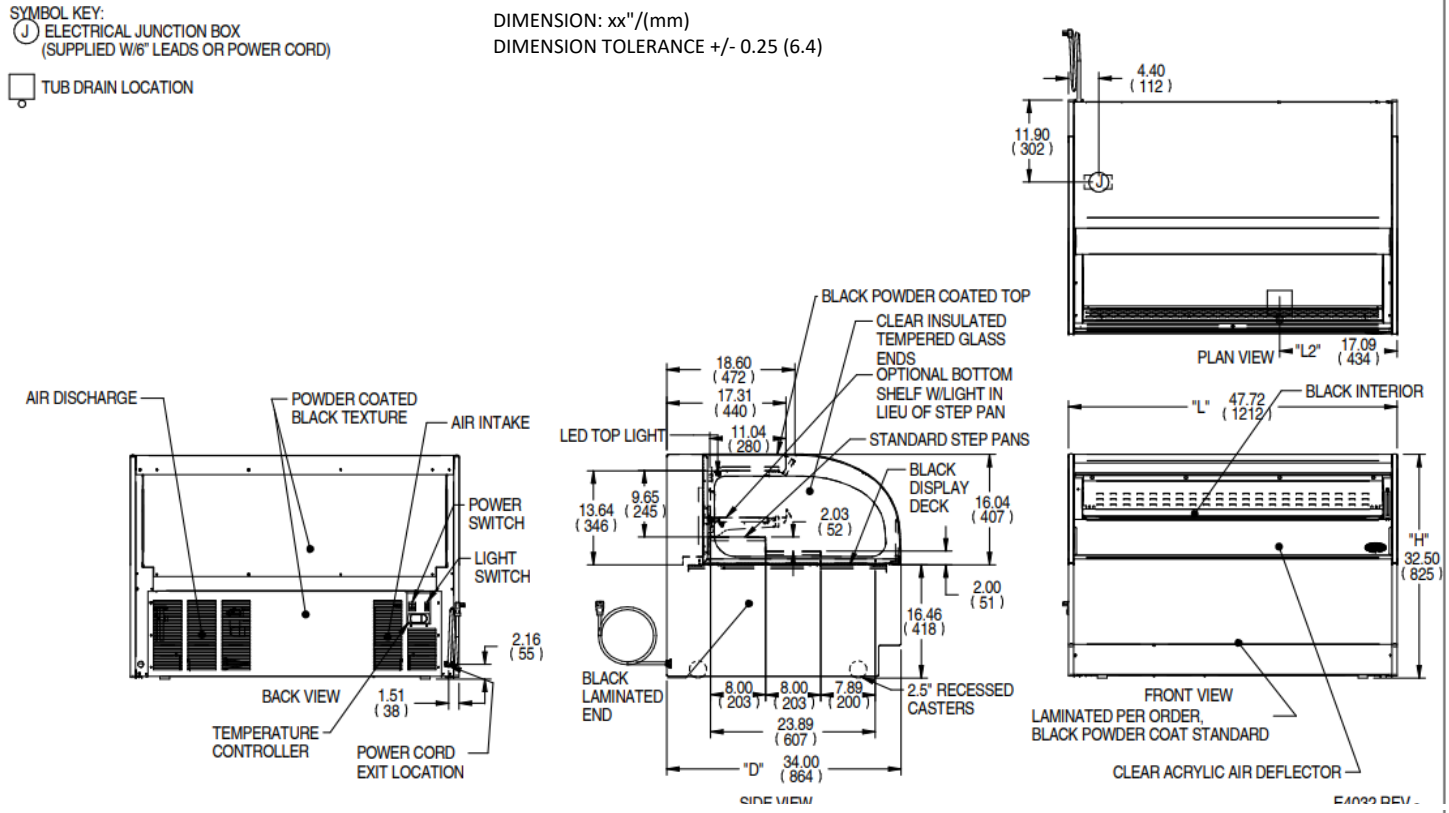
# UNDER COUNTER - Curved Ends, Refrigerated, Self-Serve Display Case

SIS#

## Product Specifications

Intended Environment: Type II - Designed to operate in maximum ambient conditions of 80°F (24°C) and 55% relative humidity.

Zone	Intended Product To Be Displayed	Avg Prod Temp °F/°C
All	Packaged Refrigerated Products	38°F / (3.3°C)



MODEL	DIMENSION				TUB DRAIN	STEP RISER			INTERIOR VOLUME CU FT	ELECTRICAL 2-WIRE + GROUND	STANDARD CONNECTION CORD & PLUG			REFRIGERANT	C.U. HP	CONDENSATE REMOVAL	SHIP WEIGHT	
	L	D	H	L2		# OF STEPS	D	L			AMPS	MAX FUSE SIZE	NEMA CORD & PLUG					LBS
	in	in	in	in			in	in										
UCR3633C	35.7	34.0	32.5	4.34	2	8.00	33.6	4.52	120/60/1	12.3	20	5-20	R290	1/2	CONDENSATE PAN	450 LBS		
	907	864	826	110		203	853									204 KILO		
UCR4833C	47.7	34.0	32.5	17.01	2	8.00	45.6	6.11	120/60/1	12.5	20	5-20	R290	1/2	CONDENSATE PAN	605 LBS		
	1212	864	826	432		203	1158									274 KILO		
UCR6033C	59.7	34.0	32.5	26.01	2	8.00	57.6	7.70	120/60/1	13.0	20	5-20	R290	3/4	CONDENSATE PAN	760 LBS		
	1516	864	826	661		203	1463									345 KILO		
UCR7233C	71.7	34.0	32.5	33.01	2	8.00	69.6	9.28	120/60/1	13.5	20	5-20	R290	3/4	CONDENSATE PAN	915 LBS		
	1821	864	826	838		203	1768									415 KILO		

- Case temperature will vary if the air curtain is disrupted.
- Due to continuing engineering improvements, specifications are subject to change without notice.



The Signature of Quality

**FEDERAL INDUSTRIES**

A Standex Company

215 Federal Avenue Belleville, Wisconsin 53508-9201

Phone: 800-356-4206

Fax: 608-424-3234

Email: Geninfo@Federalind.com

Website: Federalind.com