



The Signature of Quality®

FEDERAL INDUSTRIES

A Standex Company

215 Federal Avenue
Belleville, WI 53508-9201

Phone: 800-356-4206
Fax: 608-424-3234
Email: geninfo@federalind.com
Website: www.federalind.com

Project Name: _____

Item #: _____

Model #: _____ Qty: _____

Approval: _____

AIA#

SIS#

UNDER COUNTER - Square End, Refrigerated, Self-Serve Display Case

Incorporate into your own counter to drive product sales. The under counter display case will entice customers with last minute impulse sales through visual appeal.



Shown with optional accessories

MODEL	DIMENSIONS (Includes End Panels)
<input type="checkbox"/> UCR3633S	35.7 x 34 x 32.5 (in) 907 x 864 x 826 (mm)
<input type="checkbox"/> UCR4833S	47.7 x 34 x 32.5 (in) 1212 x 864 x 826 (mm)
<input type="checkbox"/> UCR6033S	59.7 x 34 x 32.5 (in) 1516 x 864 x 826 (mm)
<input type="checkbox"/> UCR7233S	71.7 x 34 x 32.5 (in) 1821 x 864 x 826 (mm)

STANDARD FEATURES

Model Features

- Black powder coated steel base
- Black interior back panel
- Squared ends with mirrored interior
- Black top
- Black 2 step riser
- Black laminate exterior. Other finishes optional
- Light and power switch on back of case
- Front access to refrigeration system for quick and easy service
- Cord & plug (includes casters)
- Adjustable leg levelers
- Recessed casters

Refrigeration

- On-Demand PTC condensate evaporator provided for a totally self-contained system
- Electronic temperature controls maintain 38°-40°F
- Easy clean, rustproof insulated evaporator coil compartment
- Rear condensing unit air intake & discharge
- R290 Refrigerant

Lighting

- LED top light

Agency Approvals

- UL, C-UL and UL Sanitation listed to NSF-7, Type II conditions
- DOE 2017 compliant

OPTIONAL ACCESSORIES

- | | |
|---|--|
| <input type="checkbox"/> White or stainless interior
(Including step riser or shelf) | <input type="checkbox"/> 6" Legs |
| <input type="checkbox"/> Glass, stainless steel, white or
black solid shelf w/ LED light | <input type="checkbox"/> 4" Casters |
| <input type="checkbox"/> Special exterior finish | <input type="checkbox"/> Rear air intake / front discharge |
| <input type="checkbox"/> Stainless Exterior including Top | |
| <input type="checkbox"/> Energy saving night curtain | |
| <input type="checkbox"/> Security night cover | |
| <input type="checkbox"/> Condensate pump | |
| <input type="checkbox"/> Rear door (available with single
step riser) | |



WARRANTY*
One year Parts and Labor
2nd thru 5th year part
only service compressor
(U.S.A and Canada)



Note: Information is subject to change at any time.
Visit www.federalind.com for the most current specs.

Revised 7/31/2025

AIA#

UNDER COUNTER - Square End, Refrigerated, Self-Serve Display Case

SIS#

Product Specifications

Intended Environment: Type II - Designed to operate in maximum ambient conditions of 80°F (24°C) and 55% relative humidity.

Zone	Intended Product To Be Displayed	Avg Prod Temp °F/°C
All	Packaged Refrigerated Products	38°F / (3.3°C)

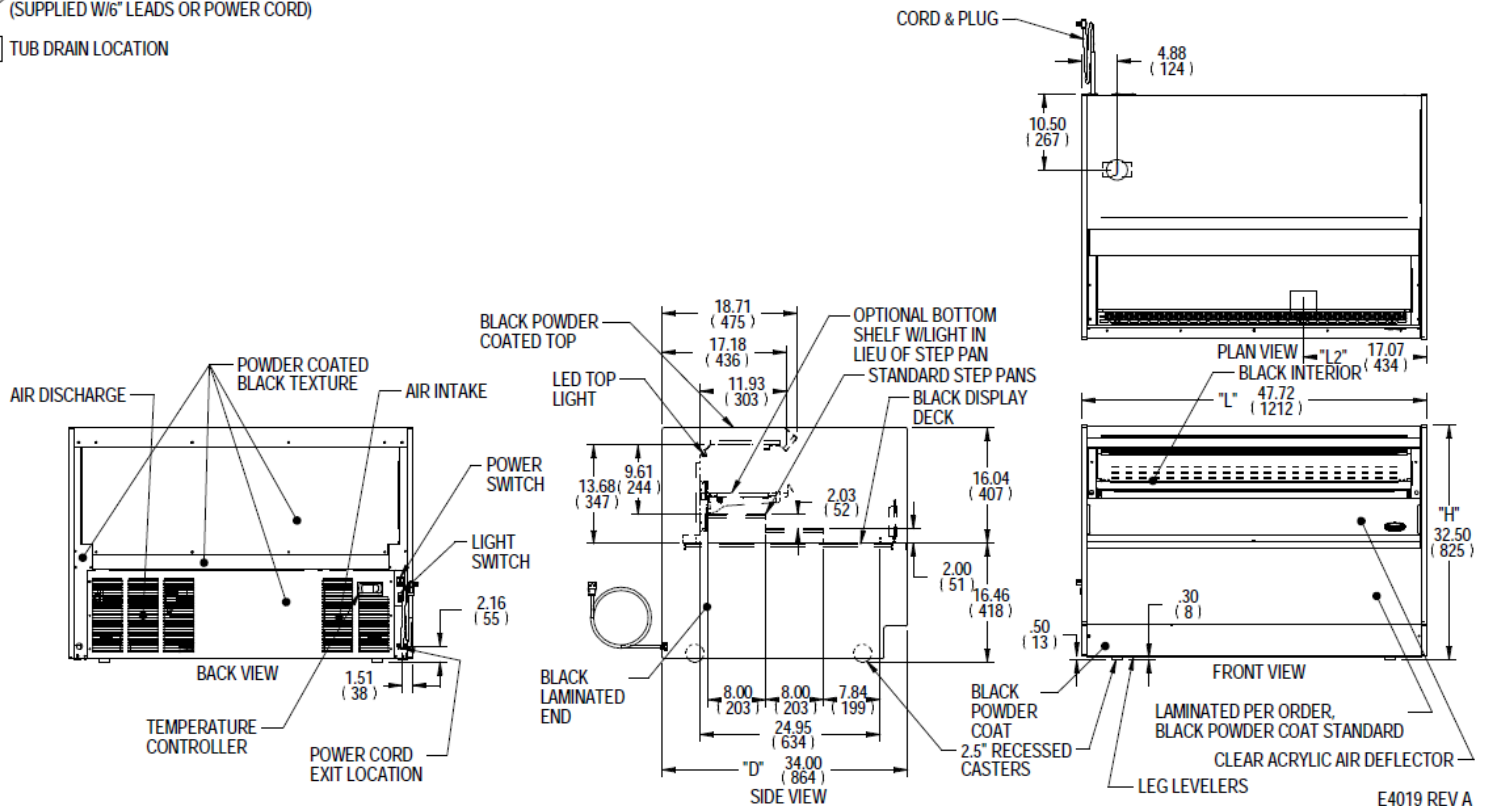
DIMENSION: xx"/(mm)

DIMENSION TOLERANCE +/- 0.25 (6.4)

SYMBOL KEY:

① ELECTRICAL JUNCTION BOX
(SUPPLIED W/6" LEADS OR POWER CORD)

□ TUB DRAIN LOCATION



E4019 REV A

										SELF CONTAINED					
MODEL	DIMENSION			TUB DRAIN	STEP RISER			INTERIOR VOLUME CU FT	ELECTRICAL 2-WIRE + GROUND	STANDARD CONNECTION			REFRIGERANT	CONDENSATE REMOVAL	SHIP
	L	D	H	L2	# OF STEPS	D	L			CORD & PLUG					WEIGHT
	in	in	in	in		in	in								LBS
	mm	mm	mm	mm		mm	mm								KILO
UCR3633S	35.7	34.0	32.5	8.01	2	8.00	33.6	4.52	120/60/1	10.0	15	5-15	R290	CONDENSATE PAN	450 LBS
	907	864	826	203		203	853								204 KILO
UCR4833S	47.7	34.0	32.5	17.01	2	8.00	45.6	6.11	120/60/1	10.0	15	5-15	R290	CONDENSATE PAN	605 LBS
	1212	864	826	432		203	1158								274 KILO
UCR6033S	59.7	34.0	32.5	22.01	2	8.00	57.6	7.70	120/60/1	16.0	20	5-20	R290	CONDENSATE PAN	760 LBS
	1516	864	826	559		203	1463								345 KILO
UCR7233S	71.7	34.0	32.5	28.01	2	8.00	69.6	9.28	120/60/1	16.0	20	5-20	R290	CONDENSATE PAN	915 LBS
	1821	864	826	711		203	1768								415 KILO

- Case temperature will vary if the air curtain is disrupted.
- Due to continuing engineering improvements, specifications are subject to change without notice.



The Signature of Quality

FEDERAL INDUSTRIES

A Standex Company

215 Federal Avenue Belleville, Wisconsin 53508-9201

Phone: 800-356-4206

Fax: 608-424-3234

Email: Geninfo@Federalind.com

Website: Federalind.com