



The Signature of Quality

FEDERAL INDUSTRIES

A Standex Company

215 Federal Avenue
Belleville, Wisconsin 53508-9201

Phone: 800-356-4206

Fax: 608-424-3234

Email: Geninfo@Federalind.com

Website: Federalind.com

Project Name: _____

Item #: _____

Model #: _____ Qty: _____

Approval: _____

AIA #

SIS #

VISION SERIES - FLEX™ - 3-in-1 Multifunctional Merchandiser - 60" Curved Ends

Maximize limited space and expand your menu offering with the ability to "flex" between heated, refrigerated, or ambient food and beverages using a single 60"H 3-in-1 grab-and-go multifunctional merchandiser.



Model VFSS3678S shown

Table with 2 columns: MODEL and DIMENSIONS (Includes End Panels). Rows include VFSS3660C and VFSS4860C with their respective dimensions.

STANDARD FEATURES

Model Features

- Stainless steel interior including shelves
Removable heated stainless steel display deck
Tempered glass curved ends
Black powder coated base frame
Moisture resistant lower end panel construction
Choice of standard colors on lower ends and lower front panel
Black trim
Adjustable leg levelers
Cord & 90 degree plug
Front air intake / front discharge
Energy saving night curtain

Refrigeration

- R290 Refrigerant
Electronic temperature control maintains 38° - 40°F (3.3° - 4.4°C) Note: Case temperatures will vary if the air curtain is disrupted.
On-demand PTC condensate evaporator provided for totally self-contained system
Digital thermometer
Clear Coil™ on demand defrost
h
Coated evaporator coil

Heating System

- Independently controlled heated shelves and deck
Holds up to an average temperature of 160°F (71°C)

Shelving

- Three tiers of adjustable stainless steel shelves with price tag molding.
Shelves can be flat or tilted down at 10°

Lighting

- 3500K LED top light

Agency Approvals

- UL, C-UL, and UL Sanitation listed to NSF-7, Type I conditions
DOE 2017 compliant

OPTIONAL ACCESSORIES

- 3500K LED lights below shelves
Stainless steel exterior finish
Premium exterior laminate
Graphics package
Solid end panels (mirrored interior)
Reflective end glass
Clear or reflective sliding rear doors (Solid swinging doors on 36" cases)
2 1/2" Casters
2 1/2" Recessed casters
2 1/2" Casters with skirt
4" Casters
4" Casters with skirt
6" Legs
6" Legs with skirt
6" Seismic legs
Front wire display basket
Cart bumper, front only
Cart bumper 3-sides
Roll-down locking security cover (black, white, or gray)
Black polycarbonate removable locking security cover
Wire shelf and deck racks
White or stainless steel trim
Rear air intake and discharge
High output condensate pan
Condensate drain
Condensate pump in lieu of pan

*Additional options available on the website and price list



WARRANTY* One year Parts and Labor 2nd thru 5th year part only service compressor (U.S.A. and Canada)

Note: Information is subject to change at any time. Visit www.federalind.com for the most current specs.

AIA #	VISION SERIES FLEX - 3-in-1 Multifunctional Merchandiser - 60" Curved Ends
SIS #	Product Specifications

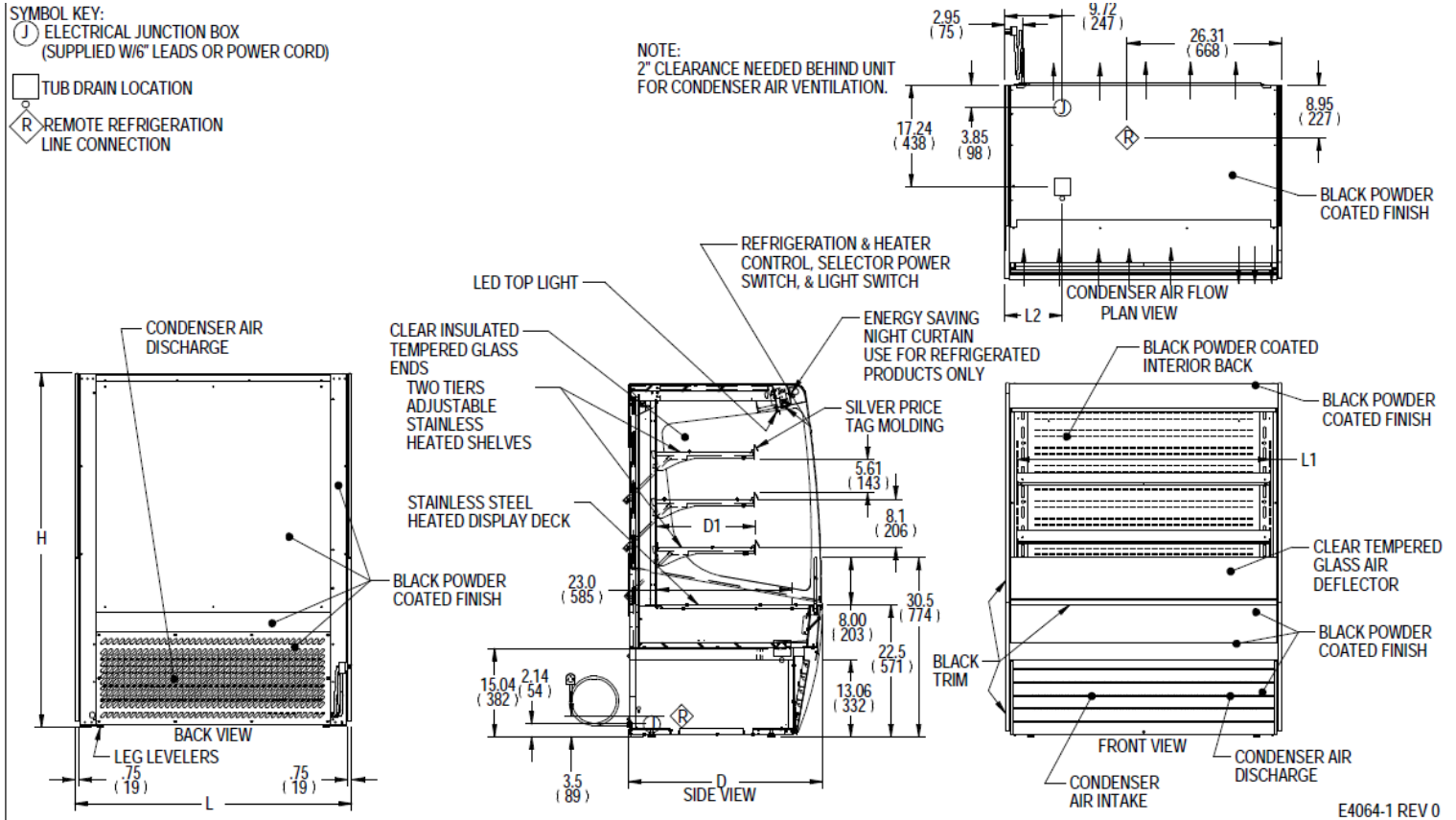
Intended Environment: Type I - Designed to operate in maximum ambient conditions of 75°F (24°C) and 55% relative humidity.		
Zone	Intended Product To Be Displayed	Avg Prod Temp °F/°C
All	Packaged Refrigerated or Heated Merchandise	Refrigerated 38°F / (3.3°C) Heated 160°F / (71.1°C)

DIMENSION: xx"/(mm)

DIMENSION TOLERANCE +/- 0.25 (6.4)

- SYMBOL KEY:**
- ELECTRICAL JUNCTION BOX (SUPPLIED W/6" LEADS OR POWER CORD)
 - TUB DRAIN LOCATION
 - REMOTE REFRIGERATION LINE CONNECTION

NOTE:
2" CLEARANCE NEEDED BEHIND UNIT FOR CONDENSER AIR VENTILATION.



E4064-1 REV 0

MODEL	DIMENSIONS				TUB DRAIN L2	SHELVING			INTERIOR VOLUME CU FT	R290 REFRIGERATION SELF CONTAINED					SHIP WEIGHT LBS KILO
	L	D	H			# OF TIERS	L1	D1		ELECTRICAL 2 WIRE + GROUND	STANDARD CONNECTION CORD & PLUG			CONDENSATE REMOVAL	
	in mm	in mm	in mm				in mm	in mm			REFR. AMPS	HEATED AMPS	MAX FUSE		
VFSS3660C	36	33	60		2	32.25	16.6	13.98	208-240/60/1	10.3	11.7	20	NEMA 6-20P	INTEGRATED PAN	500
	914	838	1524	6.74		819	422								227
VFSS4860C	47.25	33	60		2	43.25	16.6	18.48	208-240/60/1	11.0	16.3	20	NEMA 6-20P	INTEGRATED PAN	590
	1200	838	1524	13.49		1099	422								268

- Due to continuing engineering improvements, specifications are subject to change without notice.
- Case temperature will vary if the air curtain is disrupted.



FEDERAL INDUSTRIES
A Standex Company
215 Federal Avenue Belleville, Wisconsin 53508-9201

Phone: 800-356-4206
Fax: 608-424-3234
Email: Geninfo@Federalind.com
Website: Federalind.com