



The Signature of Quality®

## FEDERAL INDUSTRIES

A Standex Company

215 Federal Avenue  
Belleville, Wisconsin 53508-9201

Phone: 800-356-4206

Fax: 608-424-3234

Email: Geninfo@Federalind.com

Website: Federalind.com

Project Name: \_\_\_\_\_

Item #: \_\_\_\_\_

Model #: \_\_\_\_\_ Qty: \_\_\_\_\_

Approval: \_\_\_\_\_

AIA #

SIS #

## VISION SERIES FLEX - 3-in-1 Multifunctional Merchandiser - 78"

Maximize limited space and expand your menu offering with the ability to "flex" between heated, refrigerated, or ambient food and beverages using a single 78"H 3-in-1 grab-and-go multifunctional merchandiser.



Model VFSS3678S shown

### OPTIONAL ACCESSORIES

- |  |   |
|--|---|
| <input type="checkbox"/> 3500K LED lights below shelves          | <input type="checkbox"/> Front wire display basket        |
| <input type="checkbox"/> Self-cleaning condenser (reversing fan) | <input type="checkbox"/> Cart bumper, front only          |
| <input type="checkbox"/> Stainless steel exterior finish         | <input type="checkbox"/> Cart bumper 3-sides              |
| <input type="checkbox"/> Premium exterior laminate               | <input type="checkbox"/> Roll-down locking security cover |
| <input type="checkbox"/> Graphics package                        | (black, white, or gray)                                   |
| <input type="checkbox"/> Solid end panels (mirrored interior)    | <input type="checkbox"/> Black polycarbonate removable    |
| <input type="checkbox"/> Reflective end glass                    | locking security cover                                    |
| <input type="checkbox"/> Clear or reflective sliding rear doors  | <input type="checkbox"/> Wire shelf and deck racks        |
| (Solid swinging doors on 36" cases)                              | <input type="checkbox"/> White or stainless steel trim    |
| <input type="checkbox"/> 2 1/2" Casters                          | <input type="checkbox"/> Rear air intake and discharge    |
| <input type="checkbox"/> 2 1/2" Recessed casters                 | <input type="checkbox"/> High output condensate pan       |
| <input type="checkbox"/> 2 1/2" Casters with skirt               | <input type="checkbox"/> Condensate drain                 |
| <input type="checkbox"/> 4" Casters                              | <input type="checkbox"/> Condensate pump in lieu of pan   |
| <input type="checkbox"/> 4" Casters with skirt                   |   |
| <input type="checkbox"/> 6" Legs                                 |   |
| <input type="checkbox"/> 6" Legs with skirt                      |   |
| <input type="checkbox"/> 6" Seismic legs                         |   |

\*Additional options available on the website and price list

MODEL	DIMENSIONS (Includes End Panels)
<input type="checkbox"/> VFSS3678S	36 x 33 x 78 (in) 914 x 838 x 1981 (mm)
<input type="checkbox"/> VFSS4878S	47.25 x 33 x 78 (in) 1200 x 838 x 1981 (mm)

### STANDARD FEATURES

#### Model Features

- Stainless steel interior including shelves
- Removable heated stainless steel display deck
- Tempered glass square ends
- Black powder coated base frame
- Moisture resistant lower end panel construction
- Choice of standard colors on lower ends and lower front panel
- Black trim
- Adjustable leg levelers
- Cord & 90 degree plug
- Front air intake / front discharge
- Energy saving night curtain

#### Refrigeration

- R290 Refrigerant
- Electronic temperature control maintains 38° - 40°F (3.3° - 4.4°C) *Note: Case temperatures will vary if the air curtain is disrupted.*
- On-demand PTC condensate evaporator provided for totally self-contained system
- Digital thermometer
- Clear Coil™ on demand defrost
- Coated evaporator coil

#### Heating System

- Independently controlled heated shelves and deck
- Holds up to an average temperature of 160°F (71°C)

#### Shelving

- Four tiers of adjustable stainless steel shelves with price tag molding.
- Shelves can be flat or slanted down at 10°

#### Lighting

- 3500K LED top light

#### Agency Approvals

- UL, C-UL, and UL Sanitation listed to NSF-7, Type I conditions
- DOE 2017 compliant



**WARRANTY\***  
One year Parts and Labor  
2nd thru 5th year part only  
service compressor  
(U.S.A. and Canada)

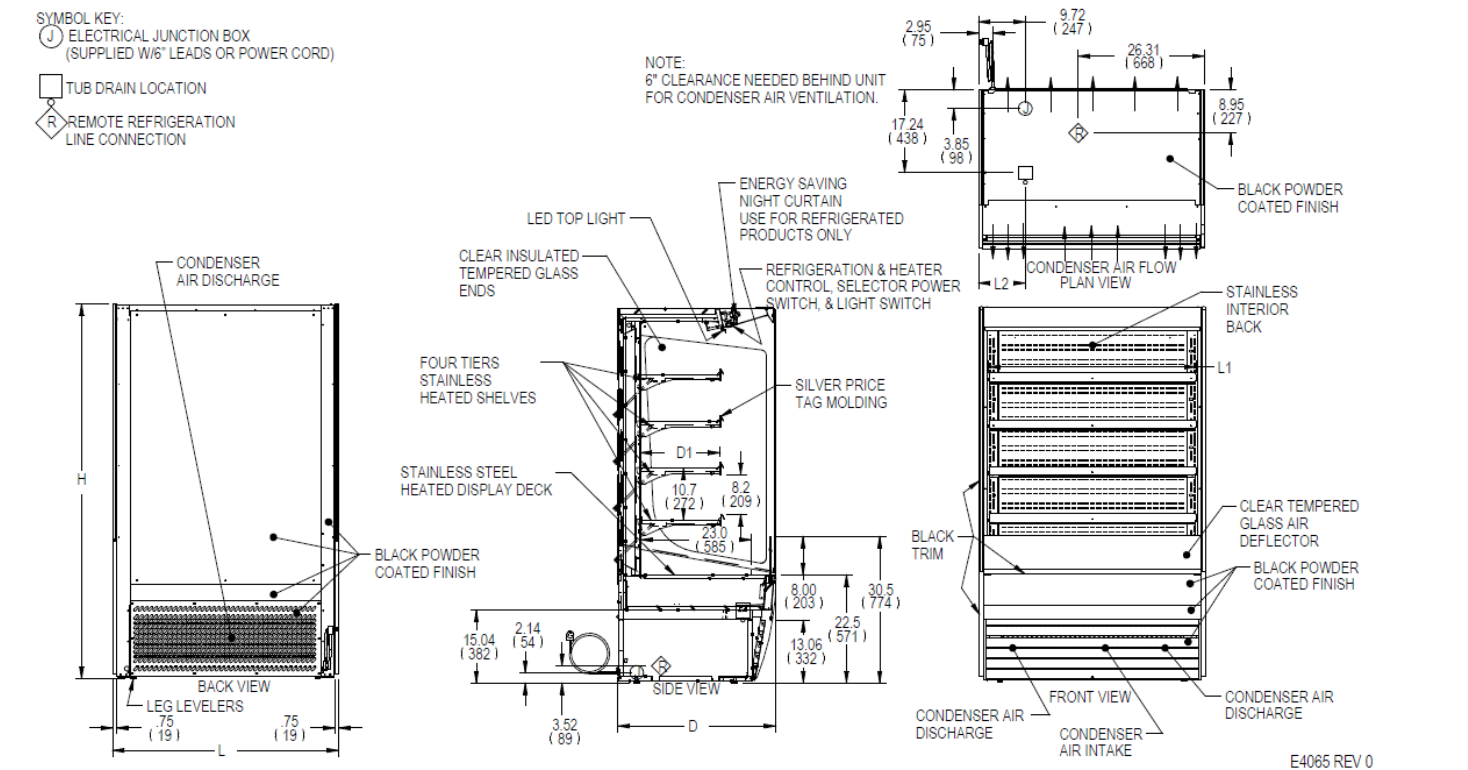
**Note: Information is subject to change at any time. Visit [www.federalind.com](http://www.federalind.com) for the most current specs.**

AIA #	<b>VISION SERIES FLEX - 3-in-1 Multifunctional Merchandiser - 78"</b>
SIS #	
<b>Product Specifications</b>	

Intended Environment: Type I - Designed to operate in maximum ambient conditions of 75°F (24°C) and 55% relative humidity.		
Zone	Intended Product To Be Displayed	Avg Prod Temp °F/°C
All	Packaged Refrigerated or Heated Merchandise	Refrigerated 38°F / (3.3°C) Heated 160°F / (71.1°C)

**DIMENSION: xx"/(mm)**

**DIMENSION TOLERANCE +/- 0.25 (6.4)**



MODEL	DIMENSIONS			TUB DRAIN	SHELVING			INTERIOR VOLUME CU FT	ELECTRICAL	R290 REFRIGERATIONS SELF CONTAINED						SHIP WEIGHT
	L	D	H	L2	# OF TIERS	L1	D1			STANDARD CONNECTION CORD & PLUG				CONDENSATE REMOVAL		
	in	in	in	in		in	in			REFRIG AMPS	HEATED AMPS	MAX FUSE	NEMA CORD & PLUG			
	mm	mm	mm	mm		mm	mm									
VFSS3678S	36	33	78	6.74	4	32.25	16.6	19.47	208-240/60/1	10.0	11.1	15	NEMA 6-15P	INTEGRATED PAN	500	
	914	838	1981	171		819	422								227	
VFSS4878S	47.25	33	78	13.49	4	43.25	16.6	25.74	208-240/60/1	11.0	15.4	20	NEMA 6-20P	INTEGRATED PAN	590	
	1200	838	1981	343		1099	422								268	

- Due to continuing engineering improvements, specifications are subject to change without notice.
- Case temperature will vary if the air curtain is disrupted.