



*The Signature of Quality*

## FEDERAL INDUSTRIES

A Standex Company

215 Federal Avenue  
Belleville, Wisconsin 53508-9201

Phone: 800-356-4206

Fax: 608-424-3234

Email: [Geninfo@Federalind.com](mailto:Geninfo@Federalind.com)

Website: [Federalind.com](http://Federalind.com)

Project Name: \_\_\_\_\_

Item #: \_\_\_\_\_

Model #: \_\_\_\_\_ Qty: \_\_\_\_\_

Approval: \_\_\_\_\_

AIA #

SIS #

## Vision Series - Curved End Self-Serve Heated Case - 60"

Designed for customers looking to increase grab and go sales of hot packaged products or to complement refrigerated offering.



Model VHSS3660C  
Shown with Options

### OPTIONAL ACCESSORIES

- |   |   |
|---|---|
| <input type="checkbox"/> 3500K LED lights below shelves   | <input type="checkbox"/> Reflective end glass   |
| <input type="checkbox"/> Stainless steel exterior finish  | <input type="checkbox"/> Front cart bumper  |
| <input type="checkbox"/> Premium exterior laminate  | <input type="checkbox"/> 6" legs (152mm)  |
| <input type="checkbox"/> Graphics package   | <input type="checkbox"/> Seismic legs   |
| <input type="checkbox"/> Solid end panels (mirrored interior)   | <input type="checkbox"/> Skirt w/4" casters or legs                                       |
| <input type="checkbox"/> Glass sliding rear doors (clear or reflective) (Glass swinging door on 24" cases, clear or reflective) | <input type="checkbox"/> 2 1/2" (63.5mm) recessed casters                                 |
|   | <input type="checkbox"/> 4" (101.6mm) casters   |
|   | <input type="checkbox"/> Joining kit for continuous line-ups (not available with casters) |
|   | <input type="checkbox"/> Front wire display basket  |

\*Additional options available on the website and price list

MODEL	DIMENSIONS (Includes End Panels)
<input type="checkbox"/> VHSS2460C	24 x 33 x 60 (in) 610 x 838 x 1524 (mm)
<input type="checkbox"/> VHSS3660C	36 x 33 x 60 (in) 914 x 838 x 1524 (mm)
<input type="checkbox"/> VHSS4860C	47.25 x 33 x 60 (in) 1200 x 838 x 1524 (mm)

### STANDARD FEATURES

#### Model Features

- Stainless steel interior including shelves
- Removable, heated stainless steel display deck
- Tempered glass ends
- Black powder coated base frame
- Moisture resistant end panel construction
- Choice of standard colors on lower millwork panel
- Black trim
- Adjustable leg levelers
- Cord & 90 degree plug
- Matches profile of the VRSS & VNSS models

#### Heating System

- Independently controlled heated shelves and deck, that are easily adjusted or replaced.
- Holds product up to an average temperature of 160oF (71oC)
- Easy front access digital temperature controls

#### Shelving

- 3 Tiers of adjustable, heated, stainless steel shelves with price tag molding on 1 1/8" centers
- Shelves can be flat or slanted down at 10°

#### Lighting

- 3500K LED Top Light

#### Agency Approvals

- UL, C-UL, and UL Sanitation listed to NSF-4



**WARRANTY\***  
One year Parts and Labor  
(U.S.A. and Canada)

Note: Information is subject to change at any time. Visit [www.federalind.com](http://www.federalind.com) for the most current specs.

Revised 2/6/2026

AIA #
SIS #

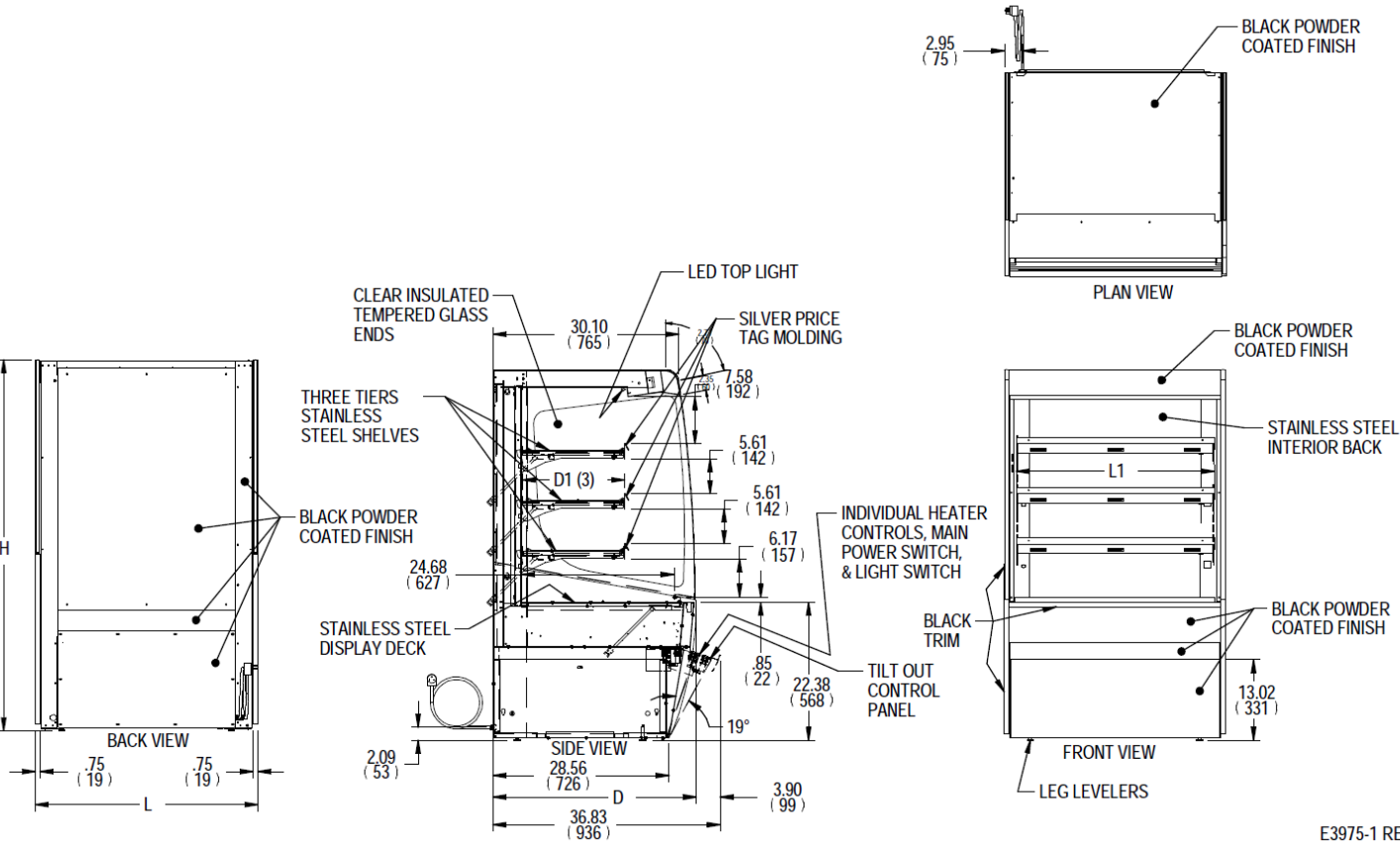
Vision Series - Curved End Self-Serve Heated - 60"

Product Specifications

Zone	Intended Product to Be Displayed	Warmest Avg Prod Temp °F/°C
All	Packaged Heated Merchandise	160°F/(71.1C)

DIMENSION: xx"/(mm)

DIMENSION TOLERANCE +/- 0.25 (6.4)



E3975-1 REV -

MODEL	DIMENSIONS			SHELVING			INTERIOR VOLUME  CU FT	STANDARD CONNECTION			SHIP WEIGHT
				# OF  TIERS	L1	D1		CORD & PLUG		NEMA  CORD &  PLUG	
	L	D	H		2 WIRE + GROUND						
	in	in	in		208-240/60/1						
	mm	mm	mm		AMPS	MAX FUSE SIZE					
VHSS2460C	24	33	60	3	20.25	16.61	9.07	6.0 @ 208	15	NEMA	310
	610	838	1524		514	422		6.9 @ 240		6-15P	141
VHSS3660C	36	33	60	3	32.25	16.61	13.98	9.7 @ 208	15	NEMA	355
	914	838	1524		819	422		11.1 @ 240		6-15P	161
VHSS4860C	47.25	33	60	3	43.25	16.61	18.48	13.4 @ 208	20	NEMA	490
	1200	838	1524		1099	422		15.4 @ 240		6-20P	222

- Packaged food products placed in case must be pre-heated before placing in case
- Due to continuing engineering improvements, specifications are subject to change without notice

