



*The Signature of Quality*

## FEDERAL INDUSTRIES

A Standex Company

215 Federal Avenue  
Belleville, Wisconsin 53508-9201

**Phone:** 800-356-4206

**Fax:** 608-424-3234

**Email:** Geninfo@Federalind.com

**Website:** Federalind.com

Project Name: \_\_\_\_\_

Item #: \_\_\_\_\_

Model #: \_\_\_\_\_ Qty: \_\_\_\_\_

Approval: \_\_\_\_\_

AIA #

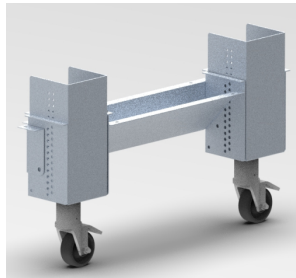
SIS #

## VISION SERIES - Square Ends Self-Serve Heated Slide-In Display Case - 60"

Designed with impulse sales in mind. Get maximum return from an attention-grabbing case and increase profits.



Square model shown



MODEL	DIMENSIONS (Includes End Panels)
<input type="checkbox"/> VHSS2460S-SLD	24 x 33 x 69.62 - 75.62 (in) 610 x 838 x 1768 - 1921 (mm)
<input type="checkbox"/> VHSS3660S-SLD	36 x 33 x 71.62 (in) 914 x 838 x 1768 - 1921 (mm)
<input type="checkbox"/> VHSS4860S-SLD	47.25 x 33 x 71.62 (in) 1200 x 838 x 1768 - 1921 (mm)

### STANDARD FEATURES

#### Model Features

- Stainless steel interior including shelves
- Stainless steel heated display deck
- Removable heated deck
- Black powder coated base frame
- Tempered glass ends
- Black trim
- Adjustable height casters (32" to 38" counter height) with locks
- Cord & plug

#### Heating System

- Independently controlled heated shelves and deck, that are easily adjusted or replaced.
- Holds product up to an average temperature of 160°F (71°C)
- Easy rear access microprocessor digital temperature controls

#### Shelving

- Three heated tiers of adjustable stainless-steel shelves with price tag molding on 1 1/8" centers
- Shelves can be flat or slanted down at 10°

#### Lighting

- 3500K LED top light

#### Agency Approvals

- UL, C-UL, and NSF4

### OPTIONAL ACCESSORIES

- ☐ 3500K LED lights below shelves
- ☐ Stainless steel exterior finish
- ☐ Premium exterior laminate
- ☐ Graphics package
- ☐ Solid end panels (mirrored interior)
- ☐ Reflective end glass
- ☐ Clear or reflective sliding rear doors (solid hinged on 24" cases)

\*Additional options available on the website and price list



**WARRANTY\***  
One year Parts and Labor  
2nd thru 5th year part only  
service compressor  
(U.S.A. and Canada)

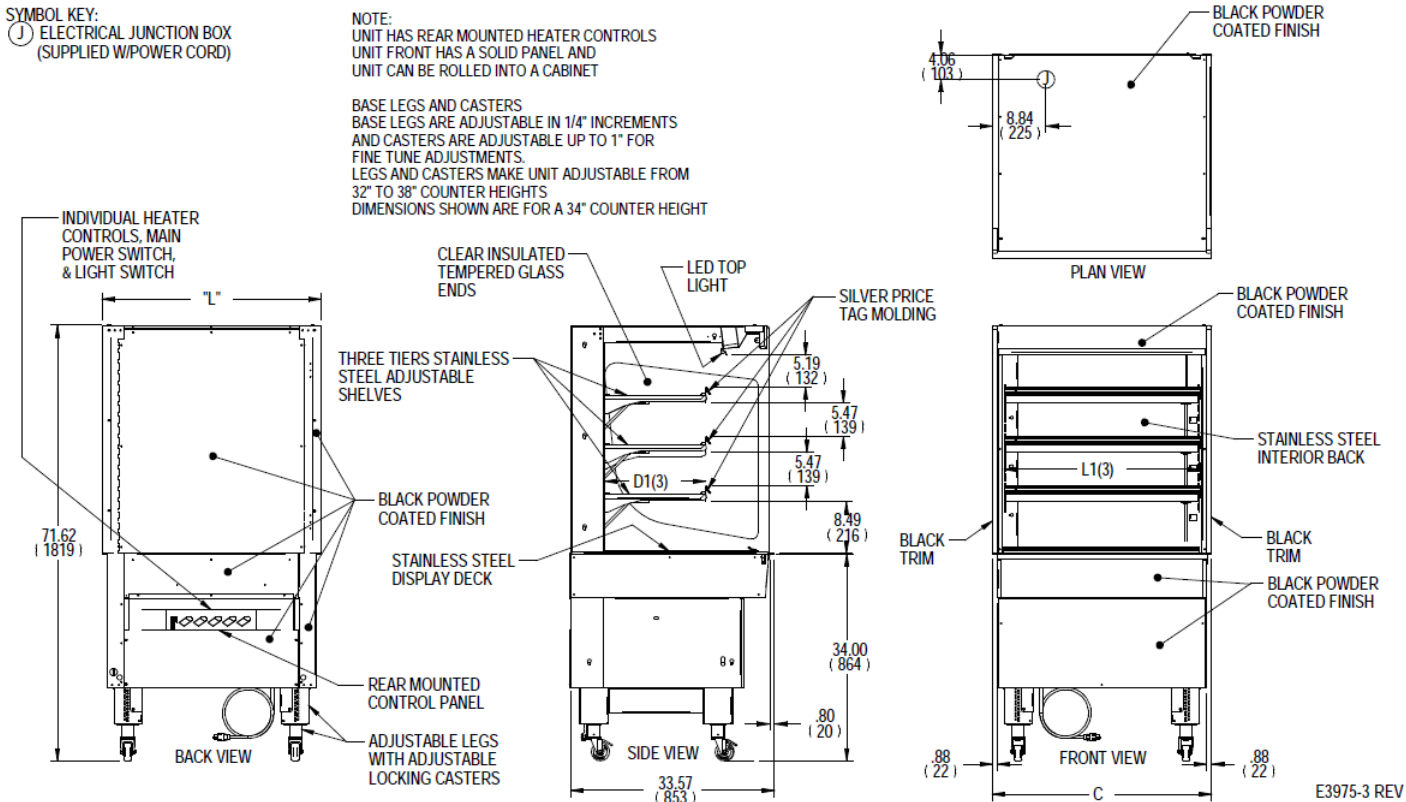
**Note:** Information is subject  
to change at any time. Visit  
[www.federalind.com](http://www.federalind.com) for the  
most current specs.

AIA #	<h1>VISION SERIES - Square Ends Self-Serve Heated Slide-In Display Case - 60"</h1> <h2>Product Specifications</h2>
SIS #	

Zone	Intended Product to be Displayed	Warmest Ave. Prod. Temp. °F/°C
All	Packaged Heated Merchandise	160°F/[71.1°C]

DIMENSION: xx" / (mm)

DIMENSION TOLERANCE +/- 0.25 (6.4)



MODEL	DIMENSIONS						COUNTER CUTOUT	SHELVING			INTERIOR VOLUME CU FT	STANDARD CONNECTION CORD & PLUG			SHIP WEIGHT
	L	D	MIN	H	MAX	C		# OF TIERS	L1	D1		2 WIRE + GROUND		NEMA	
	in	in	in	in	in	in			in	in		208-240/60/1		CORD &	
	mm	mm	mm	mm	mm	mm			mm	mm		AMPS	MAX FUSE SIZE	PLUG	KILO
VHSS2460S-SLD	24	33	69.62	-	75.62	22.5	23.25	3	32.25	16.61	9.07	6.0 @ 208	15	NEMA	310
	610	838	1768	-	1921	572	591		819	422		6.9 @ 240		6-15P	141
VHSS3660S-SLD	36	33	69.62	-	75.62	34.5	35.25	3	43.25	16.61	13.98	9.7 @ 208	15	NEMA	355
	914	838	1768	-	1921	876	895		1099	422		11.1 @ 240		6-15P	161
VHSS4860S-SLD	47.25	33	69.62	-	75.62	45.5	46.25	3	55.25	16.61	18.48	13.4 @ 208	20	NEMA	490
	1200	838	1768	-	1921	1156	1175		1403	422		15.4 @ 240		6-20P	222

- Packaged food products placed in case must be pre-heated before placing in case
- Due to continuing engineering improvements, specifications are subject to change without notice



**FEDERAL INDUSTRIES**  
 A Standex Company  
 215 Federal Avenue Belleville, Wisconsin 53508-9201

**Phone:** 800-356-4206  
**Fax:** 608-424-3234  
**Email:** Geninfo@Federalind.com  
**Website:** Federalind.com