

**FEDERAL INDUSTRIES**

A Standex Company

215 Federal Avenue
Belleville, Wisconsin 53508-9201**Phone:** 800-356-4206**Fax:** 608-424-3234**Email:** Geninfo@Federalind.com**Website:** Federalind.com

Project Name: _____

Item #: _____

Model #: _____ Qty: _____

Approval: _____

AIA #

SIS #

Vision Series - Curved End Self-Serve Heated Case - 78"

Designed for customers looking to increase grab and go sales of hot packaged products or to complement refrigerated offering.



Model VHSS3678C
Shown with Options

MODEL	DIMENSIONS (Includes End Panels)
<input type="checkbox"/> VHSS2478C	24 x 33 x 78 (in) 610 x 838 x 1981 (mm)
<input type="checkbox"/> VHSS3678C	36 x 33 x 78 (in) 914 x 838 x 1981 (mm)
<input type="checkbox"/> VHSS4878C	47.25 x 33 x 78 (in) 1200 x 838 x 1981 (mm)

STANDARD FEATURES**Model Features**

- Stainless steel interior including shelves
- Removable, heated stainless steel display deck
- Tempered glass ends
- Black powder coated base frame
- Moisture resistant end panel construction
- Choice of standard colors on lower millwork panel
- Black trim
- Adjustable leg levelers
- Cord & 90 degree plug
- Matches profile of the VRSS & VNSS models

Heating System

- Independently controlled heated shelves and deck, that are easily adjusted or replaced.
- Holds product up to an average temperature of 160°F (71°C)
- Easy front access digital temperature controls

Shelving

- 4 Tiers of adjustable, heated, stainless steel shelves with price tag molding on 1 1/8" centers
- Shelves can be flat or slanted down at 10°

Lighting

- 3500K LED Top Light

Agency Approvals

- UL, C-UL, and UL Sanitation listed to NSF-4

OPTIONAL ACCESSORIES

- | | |
|---|---|
| <input type="checkbox"/> 3500K LED lights below shelves | <input type="checkbox"/> Front cart bumper |
| <input type="checkbox"/> Stainless steel exterior finish | <input type="checkbox"/> 6" legs (152mm) |
| <input type="checkbox"/> Premium exterior laminate | <input type="checkbox"/> Seismic legs |
| <input type="checkbox"/> Graphics package | <input type="checkbox"/> Skirt w/ 4" casters or legs |
| <input type="checkbox"/> Solid end panels (mirrored interior) | <input type="checkbox"/> 2 1/2" (63.5mm) recessed casters |
| <input type="checkbox"/> Reflective end glass | <input type="checkbox"/> 4" (101.6mm) casters |
| <input type="checkbox"/> Glass sliding rear doors (clear or reflective) (Glass swinging door on 24" cases, clear or reflective) | <input type="checkbox"/> Joining kit for continuous line-ups (not available with casters) |
| | <input type="checkbox"/> Front wire display basket |

*Additional options available on the website and price list



WARRANTY*
One year Parts and Labor
(U.S.A. and Canada)

Note: Information is subject to change at any time. Visit www.federalind.com for the most current specs.

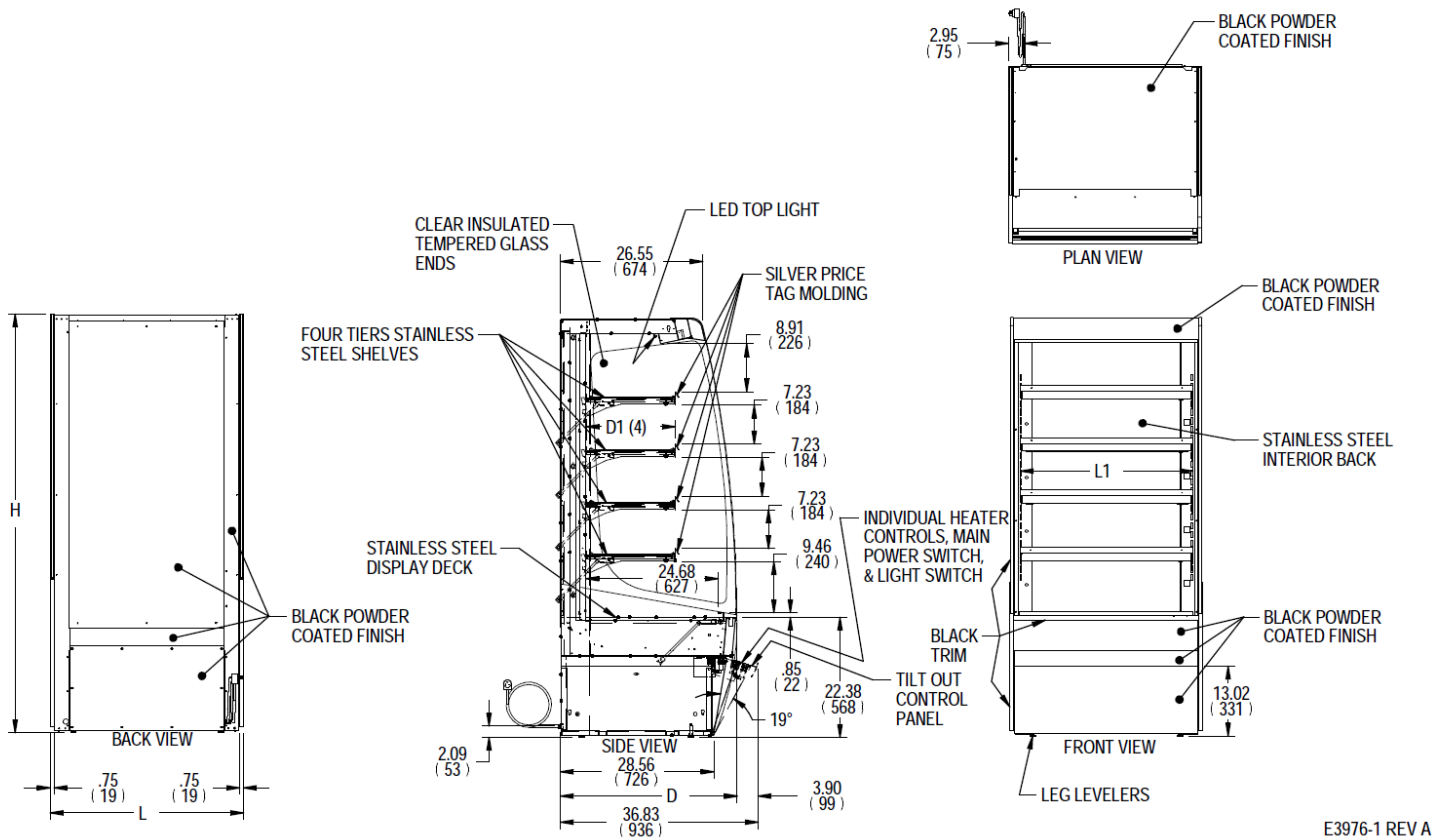
Revised 2/6/2026

AIA #	<h1>Vision Series - Curved End Self-Serve Heated Case - 78"</h1> <h2>Product Specifications</h2>
SIS #	

Zone	Intended Product to Be Displayed	Warmest Avg Prod Temp °F/°C
All	Packaged Heated Merchandise	160°F/(71.1C)

DIMENSION: xx"/(mm)

DIMENSION TOLERANCE +/- 0.25 (6.4)



E3976-1 REV A

MODEL	DIMENSIONS			SHELVING			INTERIOR VOLUME CU FT	STANDARD CONNECTION & PLUG		CORD	SHIP WEIGHT
				# OF TIERS	L1	D1		2 WIRE + GROUND			
	in	in	208-240/60/1		CORD						
	mm	mm	mm		mm	AMPS		MAX FUSE SIZE	& PLUG	LBS	
	mm	mm	mm		mm					KILO	
VHSS2478C	24	33	78	4	20.25	16.61	12.64	7.3 @ 208	15	NEMA	510
	610	838	1981		514	422		8.6 @ 240		6-15P	231
VHSS3678C	36	33	78	4	32.25	16.61	19.47	12.0 @ 208	20	NEMA	555
	914	838	1981		819	422		13.5 @ 240		6-20P	252
VHSS4878C	47.25	33	78	4	43.25	16.61	25.74	16.2 @ 208	30	NEMA	580
	1200	838	1981		1099	422		18.8 @ 240		L6-30P	263

- Packaged food products placed in case must be pre-heated before placing in case.
- Due to continuing engineering improvements, specifications are subject to change without notice.



FEDERAL INDUSTRIES
A Standex Company
215 Federal Avenue, Belleville, Wisconsin 53508-9201

Phone: 800-356-4206
Fax: 608-424-3234
Email: Geninfo@Federalind.com
Website: Federalind.com