

**FEDERAL INDUSTRIES**

A Standex Company

215 Federal Avenue  
Belleville, Wisconsin 53508-9201**Phone:** 800-356-4206**Fax:** 608-424-3234**Email:** Geninfo@Federalind.com**Website:** Federalind.com

Project Name: \_\_\_\_\_

Item #: \_\_\_\_\_

Model #: \_\_\_\_\_ Qty: \_\_\_\_\_

Approval: \_\_\_\_\_

AIA #

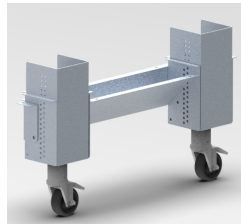
SIS #

**VISION SERIES - Curved Ends Self-Serve Non-Refrigerated Slide-In Display Case - 60"**

Designed with impulse sales in mind. Get maximum return from an attention-grabbing case and increase profits.



Square model shown



Adjustable height casters

MODEL	DIMENSIONS (Includes End Panels)
<input type="checkbox"/> VNSS3660C-SLD	36 x 33 x 69.62 - 75.62 (in) 914 x 838 x 1768 - 1921 (mm)
<input type="checkbox"/> VNSS4860C-SLD	47.25 x 33 x 69.62 - 75.62 (in) 1200 x 838 x 1768 - 1921mm
<input type="checkbox"/> VNSS6060C-SLD	59.25 x 33 x 69.62 - 75.62 (in) 1505 x 838 x 1768 - 1921 (mm)
<input type="checkbox"/> VNSS7260C-SLD	71.25 x 33 x 69.62 - 75.62 (in) 1810 x 838 x 1768 - 1921(mm)

**STANDARD FEATURES****Model Features**

- Black interior including shelves
- Stainless steel display deck
- Tempered glass upper end panels
- Black powder coated base frame
- Black trim
- Adjustable height casters (32" to 38" counter height) with locks
- Cord & plug

**Shelving**

- Two tiers of adjustable black metal shelves with black price tag molding.
- Shelves can be flat or slanted down at 10°

**Lighting**

- 3500K LED top light

**Agency Approvals**

- UL, C-UL, and UL Sanitation listed to NSF-2

**OPTIONAL ACCESSORIES**

- 3500K LED lights below shelves
- White interior (including shelves)
- Stainless steel interior (including shelves)
- Stainless steel shelves in lieu of black
- Deli meat pegs
- Additional lighted 3500K LED shelf
- Stainless steel exterior finish
- Premium exterior laminate
- Graphics package
- Solid end panels (mirrored interior)
- Reflective end glass
- Clear or reflective glass, sliding rear doors
- Black polycarbonate removable locking security cover

**\*Additional options available on the website and price list**

**WARRANTY\***  
One year Parts and Labor  
2nd thru 5th year part only  
service compressor  
(U.S.A. and Canada)

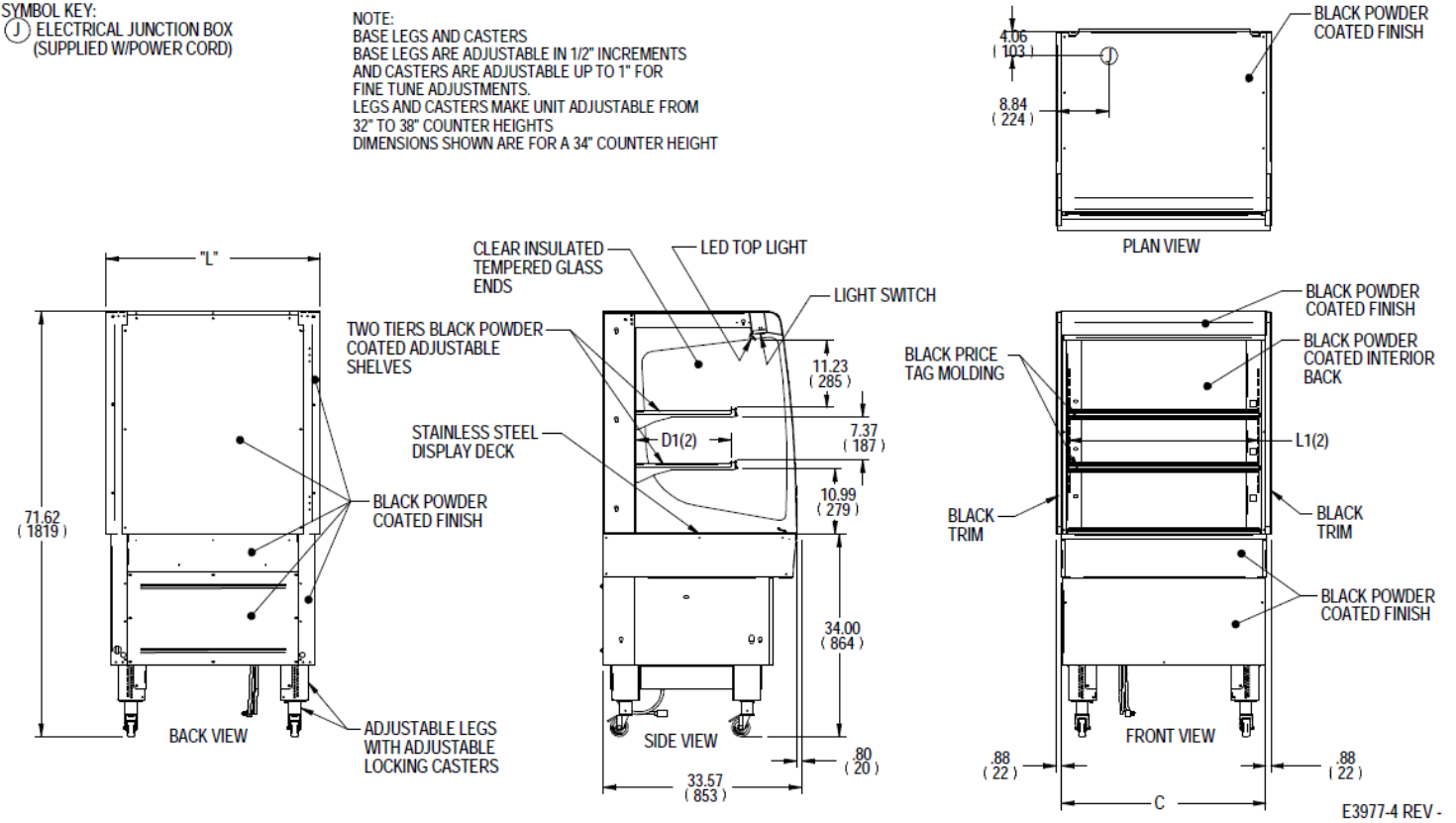
**Note: Information is subject to change at any time. Visit [www.federalind.com](http://www.federalind.com) for the most current specs.**

Zone	Intended Product To Be Displayed	
All	Non-Refrigerated Packaged Merchandise	

DIMENSION: xx" / (mm)  
 DIMENSION TOLERANCE +/- 0.25 (6.4)

SYMBOL KEY:  
 (J) ELECTRICAL JUNCTION BOX  
 (SUPPLIED W/POWER CORD)

NOTE:  
 BASE LEGS AND CASTERS  
 BASE LEGS ARE ADJUSTABLE IN 1/2" INCREMENTS  
 AND CASTERS ARE ADJUSTABLE UP TO 1" FOR  
 FINE TUNE ADJUSTMENTS.  
 LEGS AND CASTERS MAKE UNIT ADJUSTABLE FROM  
 32" TO 38" COUNTER HEIGHTS  
 DIMENSIONS SHOWN ARE FOR A 34" COUNTER HEIGHT



MODEL	DIMENSIONS						COUNTER	SHELVING			INTERIOR VOLUME CU FT	STANDARD CONNECTION CORD & PLUG			SHIP
	L	D	MIN	H	MAX	C	CUTOUT	# OF TIERS	L1	D1		2 WIRE + GROUND		NEMA	WEIGHT
	in	in	in		in	in	in		in	in		120/60/1		CORD &	LBS
	mm	mm	mm		mm	mm	mm		mm	mm		AMPS	MAX FUSE SIZE	PLUG	KILO
	VNSS3660C-SLD	36	33	69.62	-	75.62	34.5		35.25	2		32.25	16.634	13.98	1.5
914		838	1768	-	1921	876	895	819	423		202				
VNSS4860C-SLD	47.25	33	69.62	-	75.62	45.5	46.25	2	43.25	16.634	18.48	1.5	15	NEMA 5-15P	535
	1200	838	1768	-	1921	1156	1175		1099	423					243
VNSS6060C-SLD	59.25	33	69.62	-	75.62	57.5	58.25	2	55.25	16.634	23.39	2.0	15	NEMA 5-15P	665
	1505	838	1768	-	1921	1461	1480		1403	423					302
VNSS7260C-SLD	71.25	33	69.62	-	75.62	69.5	70.25	2	67.25	16.634	28.30	2.0	15	NEMA 5-15P	755
	1810	838	1768	-	1921	1765	1784		1708	423					342

- Due to continuing engineering improvements, specifications are subject to change without notice.
- Case temperature will vary if the air curtain is disrupted.

