

**FEDERAL INDUSTRIES**

A Standex Company

215 Federal Avenue
Belleville, Wisconsin 53508-9201**Phone:** 800-356-4206**Fax:** 608-424-3234**Email:** Geninfo@Federalind.com**Website:** Federalind.com

Project Name: _____

Item #: _____

Model #: _____ Qty: _____

Approval: _____

AIA #

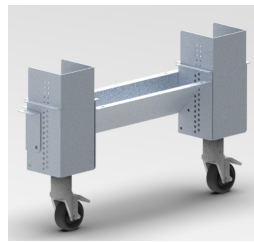
SIS #

VISION SERIES - Square Ends Self-Serve Non-Refrigerated Slide-In Display Case - 60"

Designed with impulse sales in mind. Get maximum return from an attention-grabbing case and increase profits.



Square model shown



Adjustable height casters

MODEL	DIMENSIONS (Includes End Panels)
<input type="checkbox"/> VNSS3660S-SLD	36 x 33 x 69.62 - 75.62 (in) 914 x 838 x 1768 - 1921 (mm)
<input type="checkbox"/> VNSS4860S-SLD	47.25 x 33 x 69.62 - 75.62 (in) 1200 x 838 x 1768 - 1921 (mm)
<input type="checkbox"/> VNSS6060S-SLD	59.25 x 33 x 69.62 - 75.62 (in) 1505 x 838 x 1768 - 1921 (mm)
<input type="checkbox"/> VNSS7260S-SLD	71.25 x 33 x 69.62 - 75.62 (in) 1810 x 838 x 1768 - 1921 (mm)

STANDARD FEATURES**Model Features**

- Black interior including shelves
- Stainless steel display deck
- Tempered glass upper end panels
- Black powder coated base frame
- Black trim
- Adjustable height casters (32" to 38" counter height) with locks
- Cord & plug

Shelving

- Two tiers of adjustable black metal shelves with black price tag molding.
- Shelves can be flat or slanted down at 10°

Lighting

- 3500K LED top light

Agency Approvals

- UL, C-UL, and UL Sanitation listed to NSF-2

OPTIONAL ACCESSORIES

- 3500K LED lights below shelves
- White interior (including shelves)
- Stainless steel interior (including shelves)
- Stainless steel shelves in lieu of black
- Deli meat pegs
- Additional lighted 3500K LED shelf
- Stainless steel exterior finish
- Premium exterior laminate
- Graphics package
- Solid end panels (mirrored interior)
- Reflective end glass
- Clear or reflective glass, sliding rear doors
- Black polycarbonate removable locking security cover

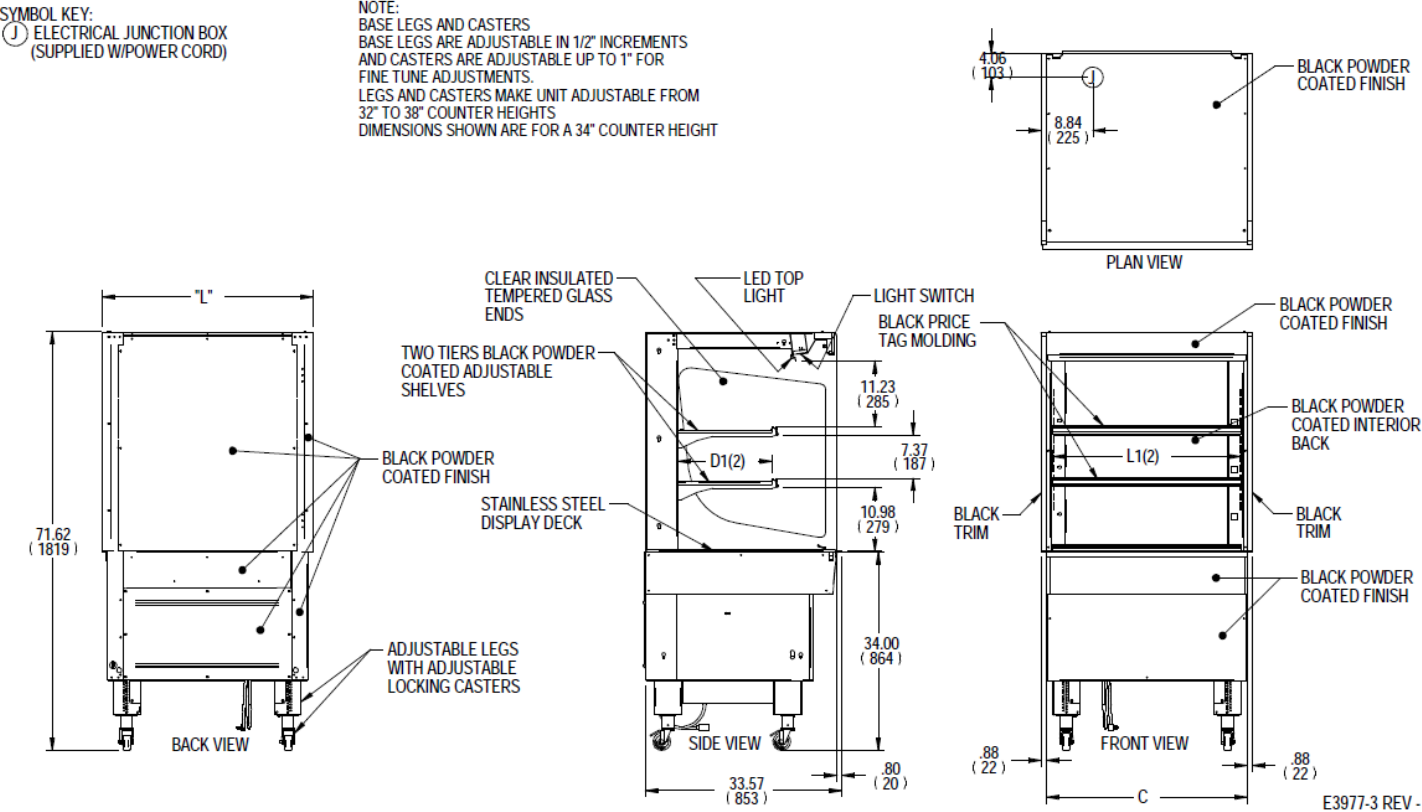
***Additional options available on the website and price list**

WARRANTY*
One year Parts and Labor
2nd thru 5th year part only
service compressor
(U.S.A. and Canada)

Note: Information is subject to change at any time. Visit www.federalind.com for the most current specs.

Zone	Intended Product To Be Displayed	
All	Non-Refrigerated Packaged Merchandise	

DIMENSION: xx" / (mm)
 DIMENSION TOLERANCE +/- 0.25 (6.4)



MODEL	DIMENSIONS						COUNTER CUTOUT	SHELVING			INTERIOR VOLUME CU FT	STANDARD CONNECTION CORD & PLUG			SHIP WEIGHT
	L	D	MIN	H	MAX	C		# OF	L1	D1		2 WIRE + GROUND		NEMA	
	in	in	in		in	in		TIERS	in	in		120/60/1		CORD &	LBS
	mm	mm	mm		mm	mm			mm	mm		AMPS	MAX FUSE SIZE	PLUG	KILO
VNSS3660S-SLD	36	33	69.62	-	75.62	34.5	35.25	2	32.25	16.634	13.98	1.5	15	NEMA 5-15P	445
	914	838	1768	-	1921	876	895		819	423					202
VNSS4860S-SLD	47.25	33	69.62	-	75.62	45.5	46.25	2	43.25	16.634	18.48	1.5	15	NEMA 5-15P	535
	1200	838	1768	-	1921	1156	1175		1099	423					243
VNSS6060S-SLD	59.25	33	69.62	-	75.62	57.5	58.25	2	55.25	16.634	23.39	2.0	15	NEMA 5-15P	665
	1505	838	1768	-	1921	1461	1480		1403	423					302
VNSS7260S-SLD	71.25	33	69.62	-	75.62	68.5	70.25	2	67.25	16.634	28.30	2.0	15	NEMA 5-15P	755
	1810	838	1768	-	1921	1765	1784		1708	423					342

- Due to continuing engineering improvements, specifications are subject to change without notice.
- Case temperature will vary if the air curtain is disrupted.

