



The Signature of Quality

FEDERAL INDUSTRIES

A Standex Company

215 Federal Avenue
Belleville, Wisconsin 53508-9201

Phone: 800-356-4206

Fax: 608-424-3234

Email: Geninfo@Federalind.com

Website: Federalind.com

Project Name: \_\_\_\_\_

Item #: \_\_\_\_\_

Model #: \_\_\_\_\_ Qty: \_\_\_\_\_

Approval: \_\_\_\_\_

AIA #

SIS #

VISION SERIES - Slim-Line Display Case - 60"

Designed to help you make the most of your limited space with a slim 24" depth while delivering a bold, attention-grabbing design that highlights your merchandise.



Model VRSL7260S Shown with Options

Table with 2 columns: MODEL and DIMENSIONS (Includes End Panels). Rows include VRSL3660S, VRSL4860S, VRSL6060S, and VRSL7260S with their respective dimensions in inches and millimeters.

STANDARD FEATURES

Model Features

- Black interior including shelves
Stainless steel display deck
Tempered glass ends
Black powder coated base frame
Moisture resistant end panel construction
Choice of standard colors on lower millwork panel
Black trim
Adjustable leg levelers
Cord & plug, self-contained only
Front air intake / rear discharge
Energy saving night curtain

Refrigeration

- R290 refrigerant
Electronic temperature control maintains 38°-40°F (3.3°-4.4°C) Note: Case temperatures will vary if the air curtain is disrupted.
Digital thermometer
Clear coil on demand defrost
Coated evaporator coil

Shelving

- Two tiers of adjustable black metal shelves with black price tag molding
Shelves can be flat or slanted down at 10°

Lighting

- 3500K LED top light

Agency Approvals

- UL, C-UL and UL Sanitation listed to NSF-7, Type I conditions
DOE 2017 compliant

OPTIONAL ACCESSORIES

- White interior (including shelves)
Stainless steel interior (including shelves)
Stainless steel or glass shelves in lieu of black
3500K LED lights below shelves
Additional lighted 3500K LED shelf
High-capacity condensate evaporator assembly
Self-cleaning condenser
Stainless steel exterior finish
Premium exterior laminate
Graphics package
Solid end panels (mirrored interior)
Reflective end glass
Clear or reflective glass, sliding rear doors (Solid hinged on 36" cases)
6" legs (152mm)
Seismic legs
Skirt w/4" casters or legs
2 1/2" (63.5mm) recessed or 4" (101.6mm) casters (self-contained models only) (Weight limits may apply)
Joining kit for continuous line-ups (not available with casters)
Front wire display basket
Front cart bumper
Roll-Down locking security cover (black, white, or gray)
Black polycarbonate removable locking security cover

\*Additional options available on the website and price list.



WARRANTY\* One year Parts and Labor 2nd thru 5th year part only service compressor (U.S.A. and Canada)

Note: Information is subject to change at any time. Visit www.federalind.com for the most current specs.

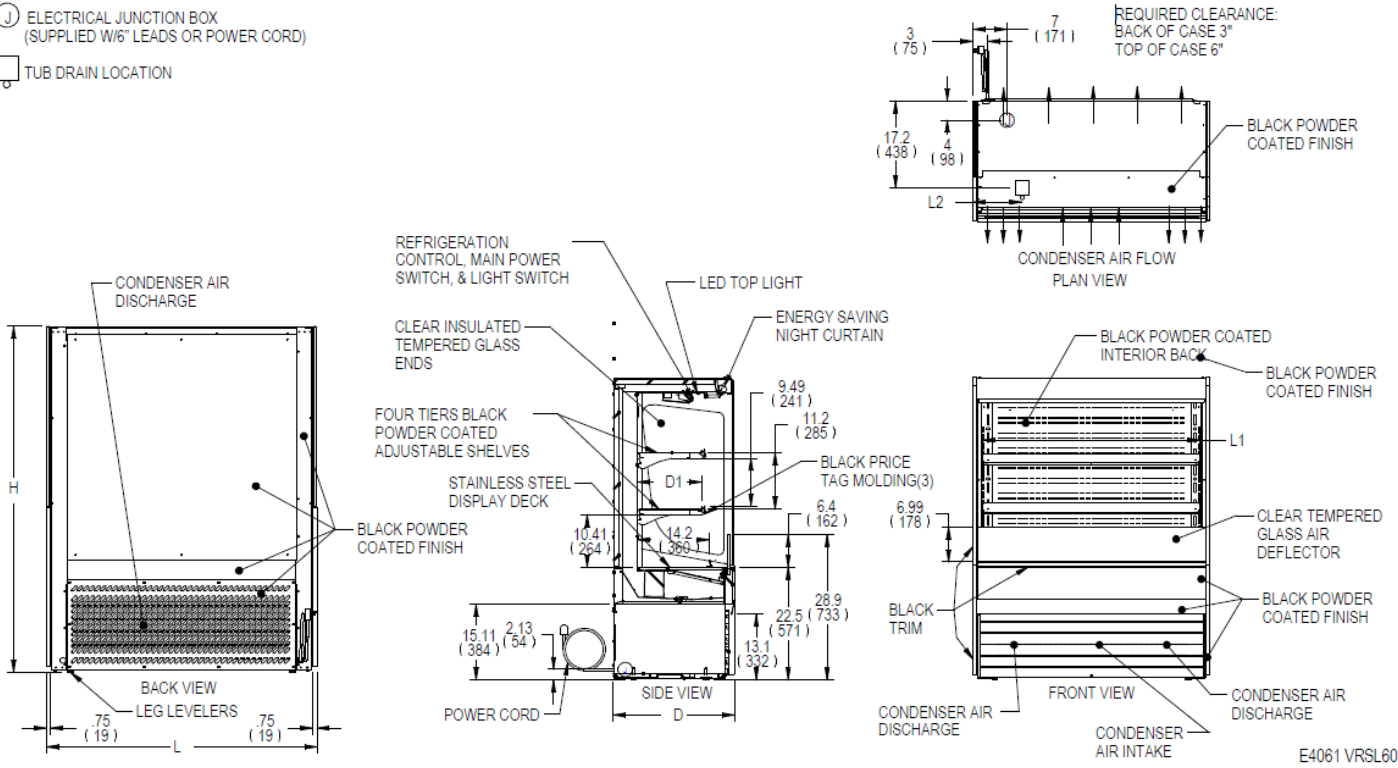
AIA #	<b>VISION SERIES - Slim-Line Display Case - 60"</b>
SIS #	<b>Product Specifications</b>

Intended Environment: Type I (Self-Contained) - Designed to operate in maximum ambient conditions of 75°F (24°C) and 55% relative humidity.

Zone	Intended Product To Be Displayed	Avg Prod Temp °F/°C
All	Packaged Refrigerated Products	38°F / (3.3°C)

**SYMBOL KEY:**

- ELECTRICAL JUNCTION BOX (SUPPLIED W/6" LEADS OR POWER CORD)
- TUB DRAIN LOCATION



E4061 VRSL60

MODEL	DIMENSIONS			TUB DRAIN L2	SHELVING		INTERIOR VOLUME CU FT	ELECTRICAL 2 WIRE + GROUND	STANDARD CONNECTION CORD & PLUG			REFRIGERANT	C.U. HP	CONDENSATE REMOVAL	SHIP WEIGHT	
	L	D	H		# OF TIERS	L1			D1	AMPS	MAX FUSE SIZE					NEMA CORD &
	in	in	in			in			in							
VRSL3660S	36	24	60	6.74	2	32.25	12.6	8.70	120/60/1	15.2	20	NEMA 5-20P	R290	3/4	INTEGRATED PAN	500
	914	610	1524	171		819	320									227
VRSL4860S	47.25	24	60	13.49	2	43.25	12.6	11.60	208-240/60/1	16.2	20	NEMA 6-20P	R290	1	INTEGRATED PAN	590
	1200	610	1524	343		1099	320									268
VRSL6060S	59.25	24	60	14.12	2	55.25	12.6	14.80	208-240/60/1	17	20	NEMA 6-20P	R290	(2)3/4	INTEGRATED PAN	750
	1505	610	1524	359		1403	320									340
VRSL7260S	71.25	24	60	20.12	2	67.25	12.6	18.00	208-240/60/1	17	20	NEMA 6-20P	R290	(2)3/4	INTEGRATED PAN	810
	1810	610	1524	511		1708	320									367

- Due to continuing engineering improvements, specifications are subject to change without notice
- Case temperature will vary if the air curtain is disrupted.



**FEDERAL INDUSTRIES**  
A Standex Company  
215 Federal Avenue Belleville, Wisconsin 53508-9201

**Phone:** 800-356-4206  
**Fax:** 608-424-3234  
**Email:** Geninfo@Federalind.com  
**Website:** Federalind.com