



The Signature of Quality

FEDERAL INDUSTRIES

A Standex Company

215 Federal Avenue
Belleville, Wisconsin 53508-9201

Phone: 800-356-4206

Fax: 608-424-3234

Email: Geninfo@Federalind.com

Website: Federalind.com

Project Name: _____

Item #: _____

Model #: _____ Qty: _____

Approval: _____

AIA #

SIS #

VISION SERIES - Slim-Line Display Case - 60"

Designed to help you make the most of your limited space with a slim 24" depth while delivering a bold, attention-grabbing design that highlights your merchandise.



Model VRSL7260S Shown with Options

Table with 2 columns: MODEL and DIMENSIONS (Includes End Panels). Rows include VRSL3660S, VRSL4860S, VRSL6060S, and VRSL7260S with their respective dimensions in inches and millimeters.

STANDARD FEATURES

Model Features

- Black interior including shelves
• Stainless steel display deck
• Tempered glass ends
• Black powder coated base frame
• Moisture resistant end panel construction
• Choice of standard colors on lower millwork panel
• Black trim
• Adjustable leg levelers
• Cord & plug, self-contained only
• Front air intake / front discharge
• Energy saving night curtain

Refrigeration

- R290 refrigerant
• Electronic temperature control maintains 38°-40°F (3.3°-4.4°C) Note: Case temperatures will vary if the air curtain is disrupted.
• Digital thermometer
• Clear coil on demand defrost
• Coated evaporator coil

Shelving

- Two tiers of adjustable black metal shelves with black price tag molding
• Shelves can be flat or slanted down at 10°

Lighting

- 3500K LED top light

Agency Approvals

- UL, C-UL and UL Sanitation listed to NSF-7, Type I conditions
• DOE 2017 compliant

OPTIONAL ACCESSORIES

- White interior (including shelves)
• Stainless steel interior (including shelves)
• Stainless steel or glass shelves in lieu of black
• 3500K LED lights below shelves
• Additional lighted 3500K LED shelf
• Field Install - High-capacity condensate evaporator assembly - Separate (1500W 120V, 15 AMP circuit required)
• Self-cleaning condenser
• Stainless steel exterior finish
• Premium exterior laminate
• Graphics package
• Solid end panels (mirrored interior)
• Reflective end glass
• Clear or reflective glass, sliding rear doors (Solid hinged on 36" cases)
• 6" legs (152mm)
• Seismic legs
• Skirt w/4" casters or legs
• 2 1/2" (63.5mm) recessed or 4" (101.6mm) casters (self-contained models only) (Weight limits may apply)
• Joining kit for continuous line-ups (not available with casters)
• Front wire display basket
• Front cart bumper
• Roll-Down locking security cover (black, white, or gray)
• Black polycarbonate removable locking security cover

*Additional options available on the website and price list.



WARRANTY* One year Parts and Labor 2nd thru 5th year part only service compressor (U.S.A. and Canada)



Note: Information is subject to change at any time. Visit www.federalind.com for the most current specs.

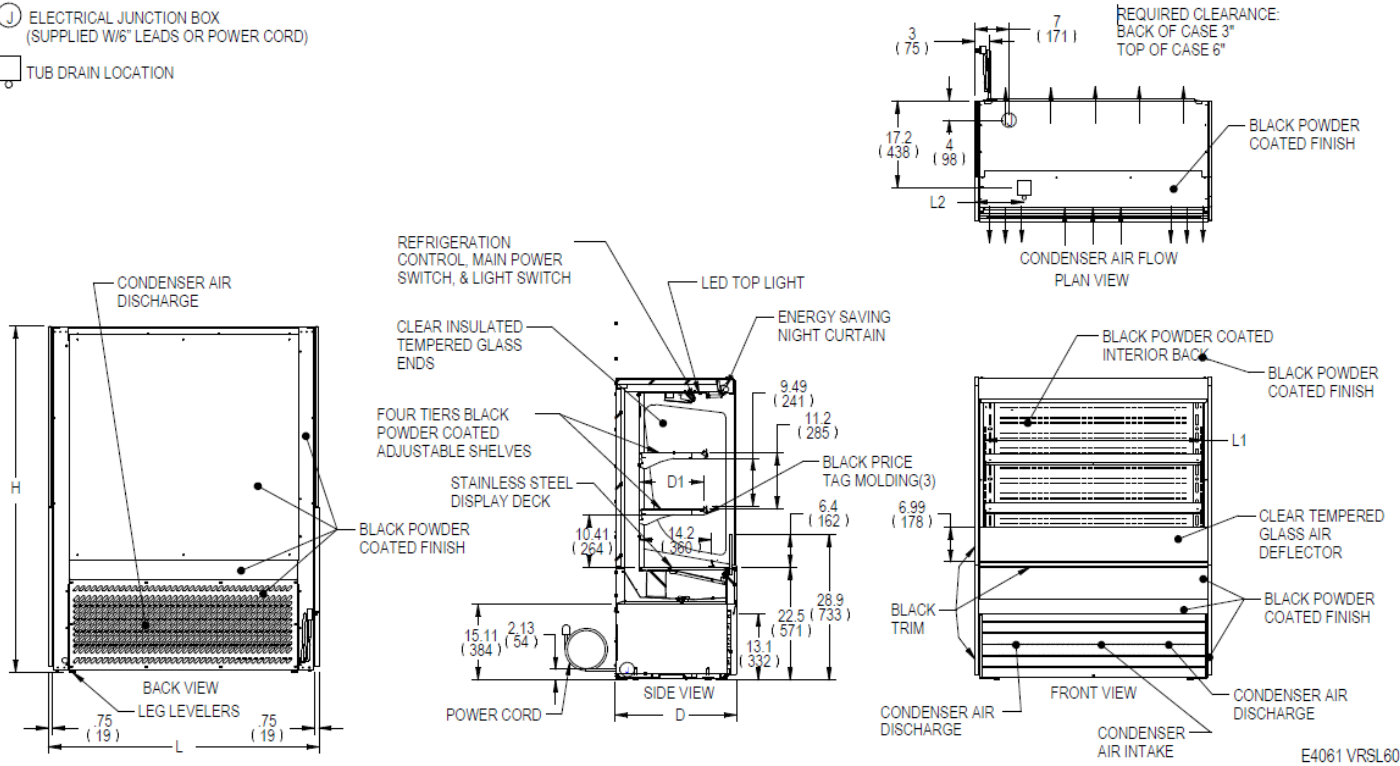
AIA #	VISION SERIES - Slim-Line Display Case - 60"
SIS #	Product Specifications

Intended Environment: Type I (Self-Contained) - Designed to operate in maximum ambient conditions of 75°F (24°C) and 55% relative humidity.

Zone	Intended Product To Be Displayed	Avg Prod Temp °F/°C
All	Packaged Refrigerated Products	38°F / (3.3°C)

SYMBOL KEY:

-  ELECTRICAL JUNCTION BOX (SUPPLIED W/6" LEADS OR POWER CORD)
-  TUB DRAIN LOCATION



E4061 VRSL60

MODEL	DIMENSIONS			TUB DRAIN L2	SHELVING			INTERIOR VOLUME CU FT	ELECTRICAL 2 WIRE + GROUND	STANDARD CONNECTION CORD & PLUG			REFRIGERANT	C.U. HP	CONDENSATE REMOVAL	SHIP WEIGHT
	L	D	H		# OF TIERS	L1	D1			AMPS	MAX FUSE SIZE	NEMA CORD &				
	in	in	in			in	in									
VRSL3660S	36	24	60	6.74	2	32.25	12.6	8.70	120/60/1	15.2	20	NEMA 5-20P	R290	3/4	INTEGRATED PAN	500
	914	610	1524	171		819	320									227
VRSL4860S	47.25	24	60	13.49	2	43.25	12.6	11.60	208-240/60/1	16.2	20	NEMA 6-20P	R290	1	INTEGRATED PAN	590
	1200	610	1524	343		1099	320									268
VRSL6060S	59.25	24	60	14.12	2	55.25	12.6	14.80	208-240/60/1	17	20	NEMA 6-20P	R290	(2)3/4	INTEGRATED PAN	750
	1505	610	1524	359		1403	320									340
VRSL7260S	71.25	24	60	20.12	2	67.25	12.6	18.00	208-240/60/1	17	20	NEMA 6-20P	R290	(2)3/4	INTEGRATED PAN	810
	1810	610	1524	511		1708	320									367

- Due to continuing engineering improvements, specifications are subject to change without notice
- Case temperature will vary if the air curtain is disrupted.



FEDERAL INDUSTRIES
A Standex Company
215 Federal Avenue Belleville, Wisconsin 53508-9201

Phone: 800-356-4206
Fax: 608-424-3234
Email: Geninfo@Federalind.com
Website: Federalind.com