



*The Signature of Quality*

## FEDERAL INDUSTRIES

A Standex Company

215 Federal Avenue  
Belleville, Wisconsin 53508-9201

**Phone:** 800-356-4206

**Fax:** 608-424-3234

**Email:** Geninfo@Federalind.com

**Website:** Federalind.com

Project Name: \_\_\_\_\_

Item #: \_\_\_\_\_

Model #: \_\_\_\_\_ Qty: \_\_\_\_\_

Approval: \_\_\_\_\_

AIA #

SIS #

## VISION SERIES - Slim-Line Display Case - 78"

Designed to help you make the most of your limited space with a slim 24" depth while delivering a bold, attention-grabbing design that highlights your merchandise.



Model  
VRSL7278S  
Shown with  
Options

MODEL	DIMENSIONS (Includes End Panels)
<input type="checkbox"/> VRSL3678S	36 x 24 x 78 (in) 914 x 610 x 1981 (mm)
<input type="checkbox"/> VRSL4878S	47.25 x 24 x 78 (in) 1200 x 610 x 1981 (mm)
<input type="checkbox"/> VRSL6078S	59.25 x 24 x 78 (in) 1505 x 610 x 1981 (mm)
<input type="checkbox"/> VRSL7278S	71.25 x 24 x 78 (in) 1810 x 610 x 1981 (mm)

## STANDARD FEATURES

### Model Features

- Black interior including shelves
- Stainless steel display deck
- Tempered glass ends
- Black powder coated base frame
- Moisture resistant end panel construction
- Choice of standard colors on lower millwork panel
- Black trim
- Adjustable leg levelers
- Cord & plug, self-contained only
- Front air intake / front discharge
- Energy saving night curtain

### Refrigeration

- R290 refrigerant
- Electronic temperature control maintains 38°-40°F (3.3°-4.4°C) Note: Case temperatures will vary if the air curtain is disrupted.
- Digital thermometer
- Clear coil on demand defrost
- Coated evaporator coil

### Shelving

- Four tiers of adjustable black metal shelves with black price tag molding.
- Shelves can be flat or slanted down at 10°.

### Lighting

- 3500K LED top light

### Agency Approvals

- UL, C-UL and UL Sanitation listed to NSF-7, Type I conditions
- DOE 2017 compliant

## OPTIONAL ACCESSORIES

- ☐ White interior (including shelves)
- ☐ Stainless steel interior (including shelves)
- ☐ Stainless steel or glass shelves in lieu of black
- ☐ 3500K LED lights below shelves
- ☐ Additional lighted 3500K LED shelf
- ☐ Field Install - High-capacity condensate evaporator assembly - Separate (1500W 120V, 15 AMP circuit required)
- ☐ Self-cleaning condenser
- ☐ Stainless steel exterior finish
- ☐ Premium exterior laminate
- ☐ Graphics package
- ☐ Solid end panels (mirrored interior)
- ☐ Reflective end glass
- ☐ Clear or reflective glass, sliding rear doors (Solid hinged on 36" cases)
- ☐ 6" legs (152mm)
- ☐ Seismic legs
- ☐ Skirt w/4" casters or legs
- ☐ 2 1/2" (63.5mm) recessed or 4" (101.6mm) casters (self-contained models only) (Weight limits may apply)
- ☐ Joining kit for continuous line-ups (not available with casters)
- ☐ Front wire display basket
- ☐ Front cart bumper
- ☐ Roll-Down locking security cover (black, white, or gray)
- ☐ Black polycarbonate removable locking security cover

\*Additional options available on the website and price list.



**WARRANTY\***  
One year Parts and Labor  
2nd thru 5th year part only  
service compressor  
(U.S.A. and Canada)

**Note: Information is subject to change at any time. Visit [www.federalind.com](http://www.federalind.com) for the most current specs.**

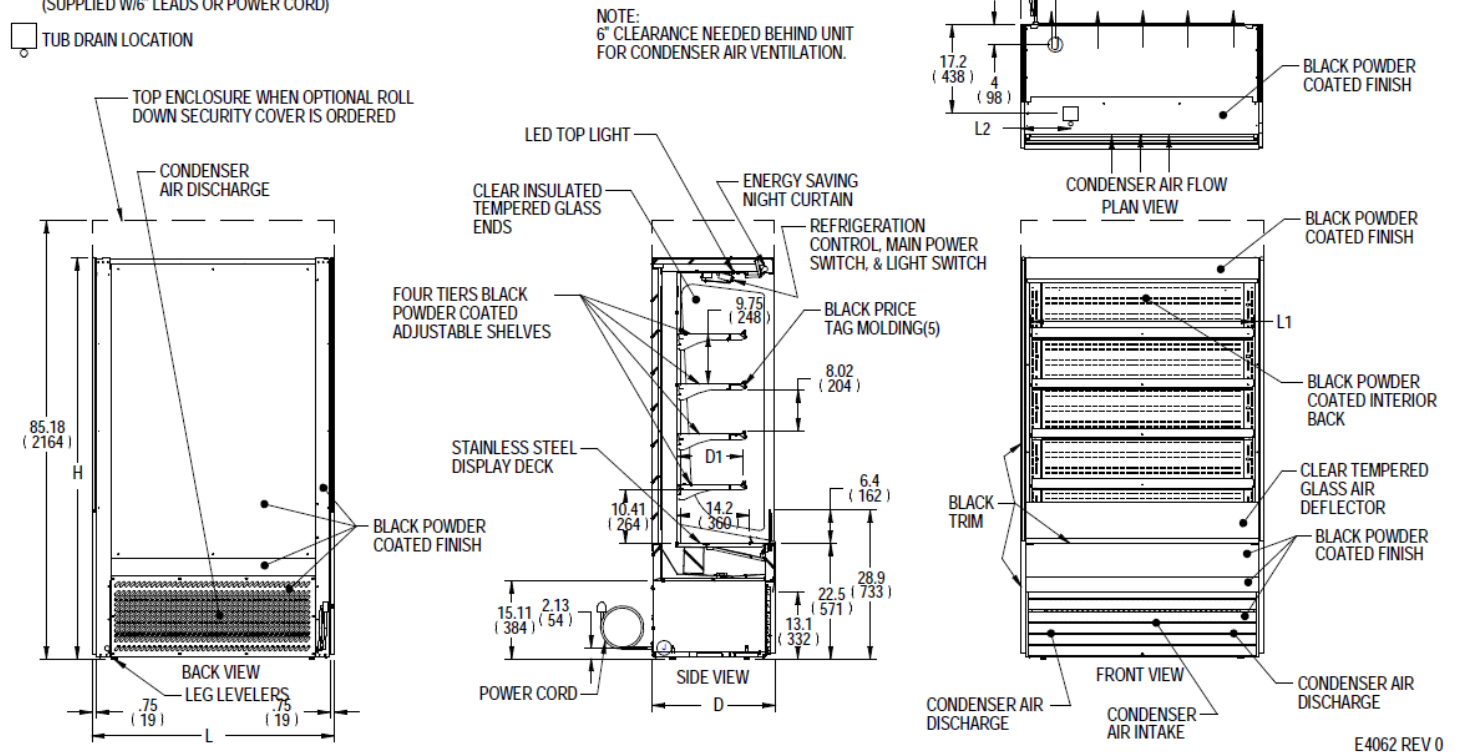
AIA #	<b>VISION SERIES - Slim-Line Display Case - 78"</b>
SIS #	
<b>Product Specifications</b>	

Intended Environment: Type I (Self-Contained) - Designed to operate in maximum ambient conditions of 75°F (24°C) and 55% relative humidity.		
Zone	Intended Product To Be Displayed	Avg Prod Temp °F/°C
All	Packaged Refrigerated Products	38°F / [3.3°C]

**DIMENSION: xx"/(mm)**  
**DIMENSION TOLERANCE +/- 0.25**  
**(6.4)**

SYMBOL KEY:

- Ⓝ ELECTRICAL JUNCTION BOX  
(SUPPLIED W/6" LEADS OR POWER CORD)
- TUB DRAIN LOCATION



									SELF CONTAINED						
MODEL	DIMENSIONS			TUB DRAIN	SHELVING			INTERIOR VOLUME CU FT	ELECTRICAL	STANDARD CONNECTION CORD & PLUG			REFRIGERANT	CONDENSATE REMOVAL	SHIP WEIGHT
	L	D	H	L2	# OF TIERS	L1	D1		2 WIRE + GROUND	AMPS	MAX FUSE SIZE	NEMA CORD &			LBS
	in	in	in	in		in	in								
	mm	mm	mm	mm		mm	mm								
VRSL3678S	36	24	78	6.74	4	32.25	12.6	13.30	120/60/1	16	20	NEMA 5-20P	R290	INTEGRATED PAN	500
	914	610	1981	171		819	320								227
VRSL4878S	47.25	24	78	13.49	4	43.25	12.6	17.70	208-240/60/1	11	15	NEMA 6-15P	R290	INTEGRATED PAN	590
	1200	610	1981	343		1099	320								268
VRSL6078S	59.25	24	78	14.12	4	55.25	12.6	22.70	208-240/60/1	16	20	NEMA 6-20P	R290	INTEGRATED PAN	750
	1505	610	1981	359		1403	320								340
VRSL7278S	71.25	24	78	20.12	4	67.25	12.6	27.60	208-240/60/1	16	20	NEMA 6-20P	R290	INTEGRATED PAN	810
	1810	610	1981	511		1708	320								367

- Due to continuing engineering improvements, specifications are subject to change without notice
- Case temperature will vary if the air curtain is disrupted.

