



The Signature of Quality

### FEDERAL INDUSTRIES

A Standex Company

215 Federal Avenue  
Belleville, Wisconsin 53508-9201

Phone: 800-356-4206

Fax: 608-424-3234

Email: Geninfo@Federalind.com

Website: Federalind.com

Project Name: \_\_\_\_\_

Item #: \_\_\_\_\_

Model #: \_\_\_\_\_ Qty: \_\_\_\_\_

Approval: \_\_\_\_\_

AIA #

SIS #

## VISION SERIES - Milk Display Case

Designed with school nutrition in mind, the Milk Display Case enhances accessibility, visibility, and security. It ensures that students can easily access fresh milk and other cold products.



Model VRSL3683S-MLK  
Shown with Options

MODEL	DIMENSIONS (Includes End Panels)
<input type="checkbox"/> VRSL3683S-MLK	36 x 24.2 x 82.75 (in) 914 x 615 x 2102 (mm)

### STANDARD FEATURES

#### Model Features

- White interior including shelves
- Stainless steel display deck
- Tempered glass ends
- Black powder coated base frame
- Moisture resistant end panel construction
- Choice of standard colors on lower millwork panel
- Black trim
- Adjustable leg levelers
- Cord & plug, self-contained only
- Front air intake / rear discharge
- Energy saving night curtain

#### Refrigeration

- R290 refrigerant
- Electronic temperature control maintains 38°-40°F (3.3°-4.4°C) Note: Case temperatures will vary if the air curtain is disrupted.
- Digital thermometer
- Clear coil on demand defrost
- Coated evaporator coil
- Top mount condensing unit
- Self-Contained Refrigeration

#### Shelving

- Three tiers of adjustable white metal shelves with price tag molding.
- Shelves can be flat or slanted down at 10°.

#### Lighting

- 3500K LED top light

#### Agency Approvals

- UL, C-UL and UL Sanitation listed to NSF-7, Type I conditions
- DOE 2017 compliant

### OPTIONAL ACCESSORIES

- Black interior (including shelves)
- Stainless steel interior (including shelves)
- Stainless steel or glass shelves in lieu of white
- 3500K LED lights below shelves
- Additional lighted 3500K LED shelf
- High-capacity condensate evaporator assembly
- Self-cleaning condenser
- Stainless steel exterior finish
- Premium exterior laminate
- Graphics package
- Solid end panels (mirrored interior)
- Reflective end glass
- Clear or reflective glass, sliding rear doors (Solid hinged on 36" cases)
- 6" legs (152mm)
- Seismic legs
- Skirt w/4" casters or legs
- 2 1/2" (63.5mm) recessed or 4" (101.6mm) casters (self-contained models only) (Weight limits may apply)
- Joining kit for continuous line-ups (not available with casters)
- Front wire display basket
- Front cart bumper
- Roll-Down locking security cover (black, white, or gray)
- Black polycarbonate removable locking security cover

\*Additional options available on the website and price list.



**WARRANTY\***  
One year Parts and Labor  
2nd thru 5th year part only  
service compressor  
(U.S.A. and Canada)

**Note: Information is subject to change at any time. Visit [www.federalind.com](http://www.federalind.com) for the most current specs.**

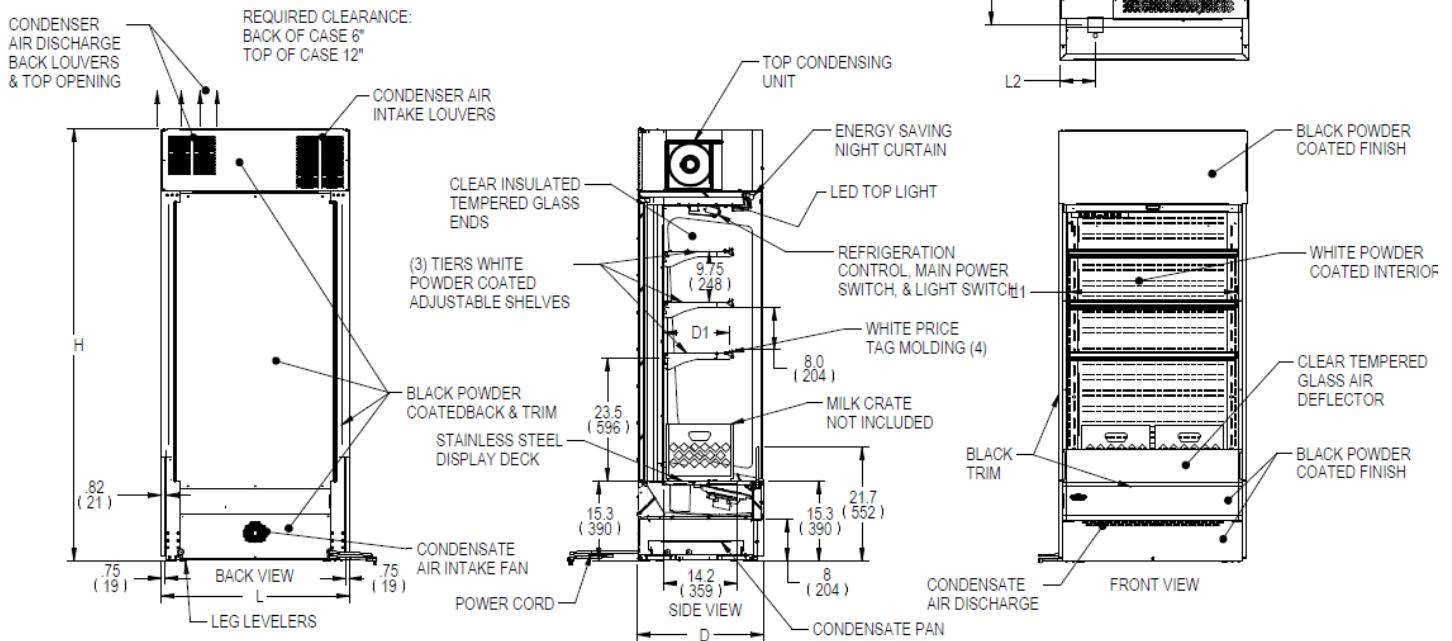
AIA #	<b>VISION SERIES - Milk Display Case</b>
SIS #	Product Specifications

Intended Environment: Type I (Self-Contained) - Designed to operate in maximum ambient conditions of 75°F (24°C) and 55% relative humidity.		
<b>Zone</b>	<b>Intended Product To Be Displayed</b>	<b>Avg Prod Temp °F/°C</b>
All	Packaged Refrigerated Products	38°F / (3.3°C)

**DIMENSION: xx" / (mm)**  
**DIMENSION TOLERANCE +/- 0.25**  
**(6.4)**

SYMBOL KEY:

- ELECTRICAL JUNCTION BOX (SUPPLIED W/6" LEADS OR POWER CORD)
- TUB DRAIN LOCATION



E4063 REV 0

MODEL	DIMENSIONS			TUB DRAIN	SHELVING		INTERIOR VOLUME CU FT	ELECTRICAL 2 WIRE + GROUND	STANDARD CONNECTION CORD & PLUG			REFRIGERANT	C.U. HP	CONDENSATE REMOVAL	SHIP WEIGHT LBS KILO	
	L	D	H	L2	# OF TIERS	L1			D1	AMPS	MAX FUSE SIZE					NEMA CORD &
	in	in	in	in		in			in							
VRSL3683-MLK	36 914	24.2 615	82.75 2102	6.7 170	3	32.25 819	12.6 320	13.30	120/60/1	15.2	20	NEMA 5-20P	R290	3/4	INTEGRATED PAN	500 227

- Due to continuing engineering improvements, specifications are subject to change without notice.
- Case temperature will vary if the air curtain is disrupted.



**FEDERAL INDUSTRIES**  
 A Standex Company  
 215 Federal Avenue Belleville, Wisconsin 53508-9201

**Phone:** 800-356-4206  
**Fax:** 608-424-3234  
**Email:** Geninfo@Federalind.com  
**Website:** Federalind.com