

**FEDERAL INDUSTRIES**

A Standex Company

215 Federal Avenue
Belleville, Wisconsin 53508-9201**Phone:** 800-356-4206**Fax:** 608-424-3234**Email:** Geninfo@Federalind.com**Website:** Federalind.com

Project Name: _____

Item #: _____

Model #: _____ Qty: _____

Approval: _____

AIA #

SIS #

VISION SERIES - Curved Ends Self-Serve Refrigerated Slide-In Display Case - 60"

Designed with impulse sales in mind. Get maximum return from an attention-grabbing case and increase profits.



MODEL	DIMENSIONS (Includes End Panels)
<input type="checkbox"/> VRSS3660C-SLD	36 x 33 x 69.62 - 75.62 (in) 914 x 838 x 1768 - 1921 (mm)
<input type="checkbox"/> VRSS4860C-SLD	47.25 x 33 x 69.62 - 75.62 (in) 1200 x 838 x 1768 - 1921 (mm)
<input type="checkbox"/> VRSS6060C-SLD	59.25 x 33 x 69.62 - 75.62 (in) 1505 x 838 x 1768 - 1921 (mm)
<input type="checkbox"/> VRSS7260C-SLD	71.25 x 33 x 69.62 - 75.62 (in) 1810 x 838 x 1768 - 1921 (mm)

STANDARD FEATURES**Model Features**

- Black interior including shelves
- Stainless steel display deck
- Tempered glass upper end panels
- Black powder coated base frame
- Black trim
- Rear air intake and discharge
- Adjustable height casters (32" to 38" counter height) with locks
- Cord & plug
- Energy saving night curtain

Refrigeration

- R290 Refrigerant
- Electronic temperature control maintains 38° - 40°F (3.3° - 4.4°C) Note: Case temperatures will vary if the air curtain is disrupted.
- Digital thermometer
- Clear coil on demand defrost
- Coated evaporator coil

Shelving

- Two tiers of adjustable black metal shelves with black price tag molding.
- Shelves can be flat or slanted down at 10°

Lighting

- 3500K LED top light

Agency Approvals

- UL, C-UL, and UL Sanitation listed to NSF-7, Type I conditions
- DOE 2017 compliant

OPTIONAL ACCESSORIES

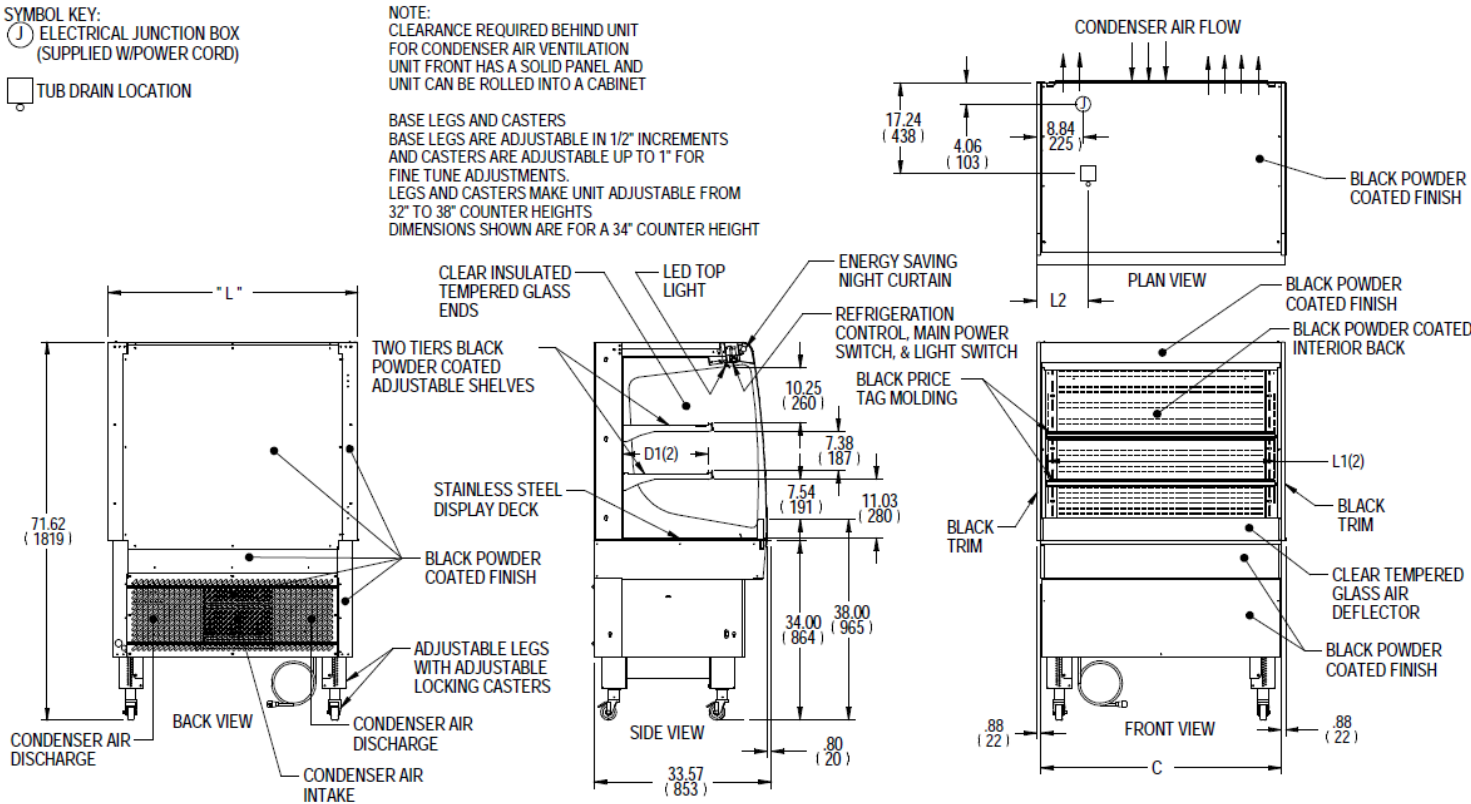
- | | |
|--|--|
| <input type="checkbox"/> White interior (including shelves) | <input type="checkbox"/> Graphics package |
| <input type="checkbox"/> Stainless steel interior (including shelves) | <input type="checkbox"/> Clear or reflective glass, sliding rear doors (Solid hinged on 36" cases) |
| <input type="checkbox"/> Stainless steel shelves in lieu of black | <input type="checkbox"/> Black polycarbonate removable locking security cover |
| <input type="checkbox"/> Additional lighted 3500K LED shelf | |
| <input type="checkbox"/> 3500K LED lights below shelves | |
| <input type="checkbox"/> Deli meat pegs | |
| <input type="checkbox"/> Field Install - High-capacity condensate evaporator assembly - Separate (1500W 120V, 15 AMP circuit required) | |
| <input type="checkbox"/> Self-cleaning condenser | |
| <input type="checkbox"/> Stainless steel exterior finish | |
| <input type="checkbox"/> Reflective glass end panels | |
| <input type="checkbox"/> Solid end panels (mirrored interior) | |
| <input type="checkbox"/> Premium exterior laminate (upper solid ends only) | |

Additional options available on the website and price list****WARRANTY
One year Parts and Labor
2nd thru 5th year part only
service compressor
(U.S.A. and Canada)**Note: Information is subject to change at any time. Visit www.federalind.com for the most current specs.**

AIA #	VISION SERIES - Curved Ends Self-Serve Refrigerated Slide-In Display Case - 60"
SIS #	
Product Specifications	

Intended Environment: Type I -Designed to operate in maximum ambient conditions of 75°F (24°C) and 55% relative humidity.		
Zone	Intended Product To Be Displayed	Avg Prod Temp °F/°C
All	Packaged Refrigerated Products	38°F / [3.3°C]

DIMENSION: xx" / (mm)
DIMENSION TOLERANCE +/- 0.25 (6.4)



E3973-4 REV A

														SELF CONTAINED							
MODEL	DIMENSIONS						COUNTER	TUB DRAIN	SHELVING			INTERIOR VOLUME CU FT	ELECTRICAL 2 WIRE + GROUND	STANDARD CONNECTION CORD & PLUG			REFRIGERANT	CONDENSATE REMOVAL	SHIP		
	L	D	MIN	H	MAX	C	CUTOUT	L2	# OF TIERS	L1	D1			AMPS	MAX FUSE SIZE	NEMA CORD &			R290	INTEGRATED PAN	WEIGHT
	in	in	in	in	in	in	in	in		in	in										LBS
	mm	mm	mm	mm	mm	mm	mm	mm		mm	mm										KILO
VRSS3660C-SLD	36	33	69.62	-	75.62	34.5	35.25	6.74	2	32.25	16.634	13.98	120/60/1	16	20	NEMA 5-20P	R290	INTEGRATED PAN	535		
	914	838	1768	-	1921	876	895	171		819	423								243		
	47.25	33	69.62	-	75.62	45.5	46.25	13.49		43.25	16.634								620		
VRSS4860C-SLD	1200	838	1768	-	1921	1156	1175	343	2	1099	423	18.48	208-240/60/1	11	15	NEMA 6-15P	R290	INTEGRATED PAN	281		
	59.25	33	69.62	-	75.62	57.5	58.25	14.12		55.25	16.634								755		
	1505	838	1768	-	1921	1461	1480	359		1403	423								342		
VRSS6060C-SLD	71.25	33	69.62	-	75.62	69.5	70.25	20.12	2	67.25	16.634	23.39	208-240/60/1	16	20	NEMA 6-20P	R290	INTEGRATED PAN	845		
	1810	838	1768	-	1921	1765	1784	511		1708	423								383		

- Due to continuing engineering improvements, specifications are subject to change without notice.
- Case temperature will vary if the air curtain is disrupted.

