



The Signature of Quality

FEDERAL INDUSTRIES

A Standex Company

215 Federal Avenue
Belleville, Wisconsin 53508-9201

Phone: 800-356-4206

Fax: 608-424-3234

Email: Geninfo@Federalind.com

Website: Federalind.com

Project Name: _____

Item #: _____

Model #: _____ Qty: _____

Approval: _____

AIA #

SIS #

VISION SERIES - Square Ends Self-Serve Refrigerated Slide-In Display Case - 60"

Designed with impulse sales in mind. Get maximum return from an attention-grabbing merchandiser and increase profits.



Curved End Shown

OPTIONAL ACCESSORIES

- ☐ White interior (including shelves)
- ☐ Stainless steel interior (including shelves)
- ☐ Stainless steel shelves in lieu of black
- ☐ Additional lighted 3500K LED shelf (10)
- ☐ Deli meat pegs
- ☐ Field Install - High-capacity condensate evaporator assembly - Separate (1500W 120V, 15 AMP circuit required)
- ☐ Self-cleaning condenser
- ☐ o
- ☐ k
- ☐ o
- ☐ h

- ☐ Graphics package
- ☐ Clear or reflective glass, sliding rear doors (Solid hinged on 36" cases)
- ☐ Black polycarbonate removable locking security cover
- ☐ Roll-Down locking security cover (black, white, or gray)
- ☐ Clear sliding rear access door (Solid hinged door on 36" model)
- ☐ Cord exit bottom of case
- ☐ Slanted milk crate deck

*Additional options available on the website and price list.

MODEL	DIMENSIONS (Includes End Panels)
<input type="checkbox"/> VRSS3660S-SLD	36 x 33 x 69.62 - 75.62 (in) 914 x 838 x 1768 - 1921 (mm)
<input type="checkbox"/> VRSS4860S-SLD	47.25 x 33 x 69.62 - 75.62 (in) 1200 x 838 x 1768 - 1921 (mm)
<input type="checkbox"/> VRSS6060S-SLD	59.25 x 33x 69.62 - 75.62(in) 1505 x 838 x 1768 - 1921(mm)
<input type="checkbox"/> VRSS7260S-SLD	71.25 x 33x 69.62 - 75.62 (in) 1810 x 838 x 1768 - 1921 (mm)

STANDARD FEATURES

Model Features

- Black interior including shelves
- Stainless steel display deck
- Tempered glass upper end panels
- Black powder coated base frame
- Choice of glass or solid ends
- Choice of white or black paint or standard laminate colors
- Black trim
- Rear air intake and discharge
- Adjustable height casters (3" with locks)
- Cord & plug
- Energy saving night curtain

Refrigeration

- R290 Refrigerant
- Electronic temperature control maintains 38°-40°F (3.3°-4.4°C) Note: Case temperatures will vary if the air curtain is disrupted.
- Digital thermometer
- Clear coil on demand defrost
- Coated evaporator coil

Shelving

- Two tiers of adjustable black metal shelves with black price tag molding
- Shelves can be flat or slanted down at 10°

Lighting

- 3500K LED top light

Agency Approvals

- UL, C-UL and UL Sanitation listed to NSF-7, Type I conditions
- DOE 2017 compliant



WARRANTY*
One year Parts and Labor
2nd thru 5th year part only
service compressor
(U.S.A. and Canada)

Note: Information is subject to change at any time. Visit www.federalind.com for the most current specs.

AIA #	<h1>VISION SERIES - Square Ends Self-Serve Refrigerated Slide-In Display Case - 60"</h1> <h2>Product Specifications</h2>
SIS #	

Intended Environment: Type I -Designed to operate in maximum ambient conditions of 75°F (24°C) and 55% relative humidity.		
Zone	Intended Product To Be Displayed	Avg Prod Temp °F/°C
All	Packaged Refrigerated Products	38°F / [3.3°C]

DIMENSION: xx"/(mm)

DIMENSION TOLERANCE +/- 0.25 (6.4)

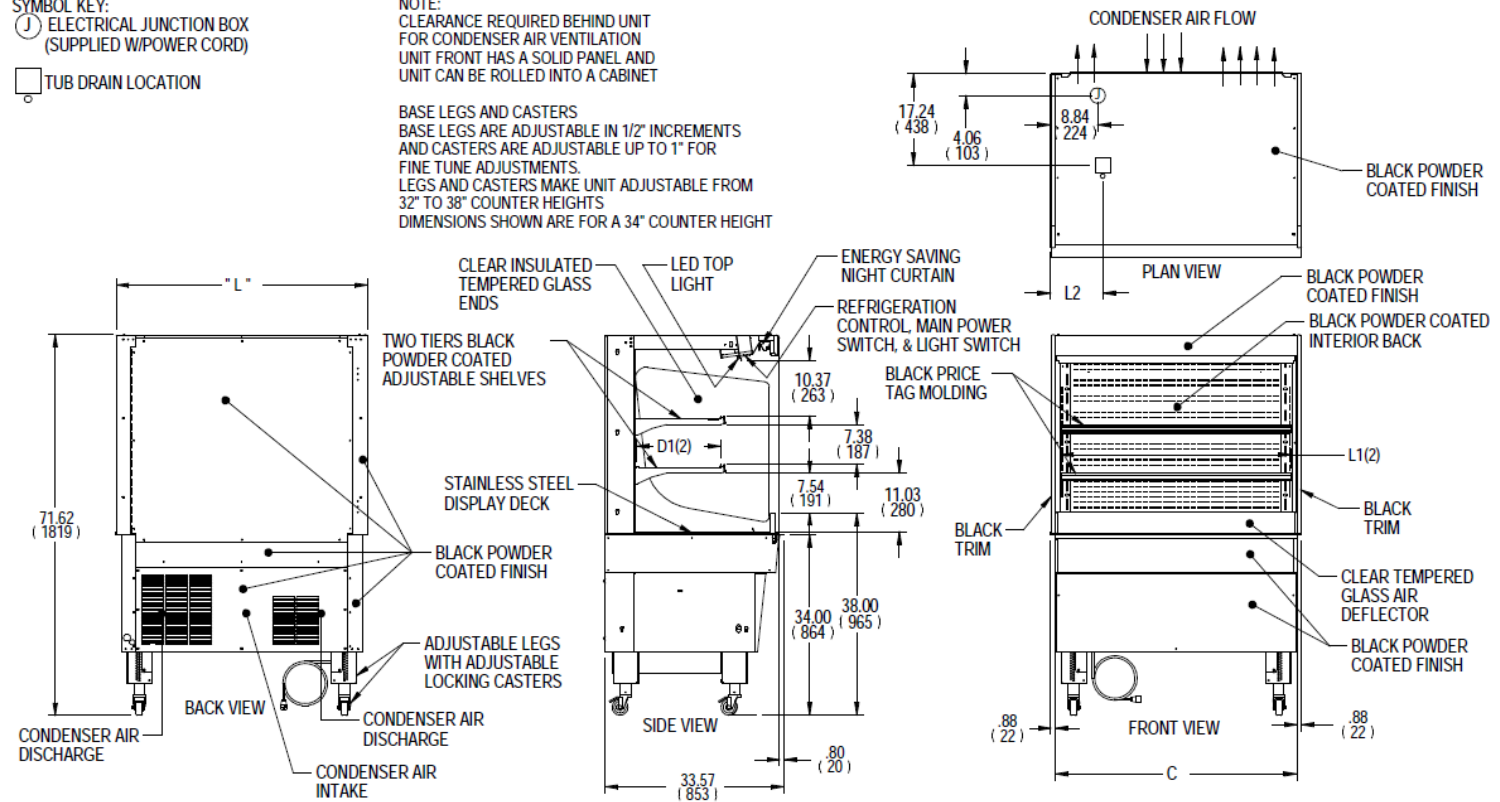
SYMBOL KEY:

① ELECTRICAL JUNCTION BOX (SUPPLIED W/POWER CORD)

□ TUB DRAIN LOCATION

NOTE:
CLEARANCE REQUIRED BEHIND UNIT FOR CONDENSER AIR VENTILATION
UNIT FRONT HAS A SOLID PANEL AND UNIT CAN BE ROLLED INTO A CABINET

BASE LEGS AND CASTERS
BASE LEGS ARE ADJUSTABLE IN 1/2" INCREMENTS AND CASTERS ARE ADJUSTABLE UP TO 1" FOR FINE TUNE ADJUSTMENTS.
LEGS AND CASTERS MAKE UNIT ADJUSTABLE FROM 32" TO 38" COUNTER HEIGHTS
DIMENSIONS SHOWN ARE FOR A 34" COUNTER HEIGHT



E3973-3 REV A

MODEL	DIMENSIONS						COUNTER	TUB DRAIN	SHELVING			INTERIOR VOLUME CU FT	ELECTRICAL 2 WIRE + GROUND	STANDARD CONNECTION CORD & PLUG			REFRIGERANT	CONDENSATE REMOVAL	SHIP WEIGHT
	L	D	MIN	H	MAX	C	CUTOUT	L2	# OF TIERS	L1	D1			AMPS	MAX FUSE SIZE	NEMA CORD &			LBS
	in	in	in	in	in	in	in	in		in	in								KILO
	mm	mm	mm	mm	mm	mm	mm	mm		mm	mm								
VRSS3660S-SLD	36	33	69.62	-	75.62	34.5	35.25	6.74	2	32.25	16.634	13.98	120/60/1	16	20	NEMA 5-20P	R290	INTEGRATED PAN	535
	914	838	1768	-	1921	876	895	171		819	423								243
VRSS4860S-SLD	47.25	33	69.62	-	75.62	45.5	46.25	13.49	2	43.25	16.634	18.48	208-240/60/1	11	15	NEMA 6-15P	R290	INTEGRATED PAN	620
	1200	838	1768	-	1921	1156	1175	343		1099	423								281
VRSS6060S-SLD	59.25	33	69.62	-	75.62	57.5	58.25	14.12	2	55.25	16.634	23.39	208-240/60/1	16	20	NEMA 6-20P	R290	INTEGRATED PAN	755
	1505	838	1768	-	1921	1461	1480	359		1403	423								342
VRSS7260S-SLD	71.25	33	69.62	-	75.62	69.5	70.25	20.12	2	67.25	16.634	28.30	208-240/60/1	16	20	NEMA 6-20P	R290	INTEGRATED PAN	845
	1810	838	1768	-	1921	1765	1784	511		1708	423								383

- Case temperature will vary if the air curtain is disrupted.
- Due to continuing engineering improvements, specifications are subject to change without notice



FEDERAL INDUSTRIES
A Standex Company
215 Federal Avenue Belleville, Wisconsin 53508-9201

Phone: 800-356-4206
Fax: 608-424-3234
Email: Geninfo@Federalind.com
Website: Federalind.com