



The Signature of Quality

FEDERAL INDUSTRIES

A Standex Company

215 Federal Avenue
Belleville, Wisconsin 53508-9201

Phone: 800-356-4206

Fax: 608-424-3234

Email: Geninfo@Federalind.com

Website: Federalind.com

Project Name: _____

Item #: _____

Model #: _____ Qty: _____

Approval: _____

AIA #

SIS #

VISION SERIES - Square End Self-Serve Refrigerated Case - 78"

Designed with impulse sales in mind. Get maximum return from an attention-grabbing merchandiser and increase profits.



Model VRSS4878S
Shown with Options

OPTIONAL ACCESSORIES

- | | |
|----------------------------------------------------------------------------------------------------------------------------------------|----------------------------------------------------------------------------------------------------------------------------------|
| <input type="checkbox"/> White interior (including shelves) | <input type="checkbox"/> Graphics package |
| <input type="checkbox"/> Stainless steel interior (including shelves) | <input type="checkbox"/> Solid end panels (mirrored interior) |
| <input type="checkbox"/> Stainless steel or glass shelves in lieu of black | <input type="checkbox"/> Reflective end glass |
| <input type="checkbox"/> Deli meat pegs | <input type="checkbox"/> Clear or reflective glass, sliding rear doors (Solid hinged on 36" cases) |
| <input type="checkbox"/> 3500K LED lights below shelves | <input type="checkbox"/> 6" legs (152mm) |
| <input type="checkbox"/> Additional lighted 3500K LED shelf | <input type="checkbox"/> Seismic legs |
| <input type="checkbox"/> Field Install - High-capacity condensate evaporator assembly - Separate (1500W 120V, 15 AMP circuit required) | <input type="checkbox"/> Skirt w/4" casters or legs |
| <input type="checkbox"/> Condensate evaporator assembly (field install) (separate 120V, 20A circuit required) (remote only) | <input type="checkbox"/> 2 1/2" (63.5mm) recessed or 4" (101.6mm) casters (self-contained models only) (Weight limits may apply) |
| <input type="checkbox"/> Remote refrigeration with condensate pump (EEV included) | <input type="checkbox"/> Joining kit for continuous line-ups (not available with casters) |
| <input type="checkbox"/> Self-cleaning condenser | <input type="checkbox"/> Front wire display basket |
| <input type="checkbox"/> Rear air intake / rear discharge | <input type="checkbox"/> Front cart bumper |
| <input type="checkbox"/> Stainless steel exterior finish | <input type="checkbox"/> Roll-Down locking security cover (black, white, or gray) Stand alone models only |
| <input type="checkbox"/> Premium exterior laminate | <input type="checkbox"/> Black polycarbonate removable locking security cover |

*Additional options available on the website and price list.

MODEL	DIMENSIONS (Includes End Panels)
<input type="checkbox"/> VRSS3678S	36 x 33 x 78 (in) 914 x 838 x 1981 (mm)
<input type="checkbox"/> VRSS4878S	47.25 x 33 x 78 (in) 1200 x 838 x 1981 (mm)
<input type="checkbox"/> VRSS6078S	59.25 x 33x 78 (in) 1505 x 838 x 1981 (mm)
<input type="checkbox"/> VRSS7278S	71.25 x 33x 78 (in) 1810 x 838 x 1981 (mm)

STANDARD FEATURES

Model Features

- Black interior including shelves
- Stainless steel display deck
- Tempered glass ends
- Black powder coated base frame
- Moisture resistant end panel construction
- Choice of standard colors on lower millwork panel
- Black trim
- Adjustable leg levelers
- Cord & plug, self-contained only
- Front air intake / front discharge
- Energy saving night curtain
- Matches profile of the VRSS & VHSS models

Refrigeration

- R290 Refrigerant
- Electronic temperature control maintains 38°-40°F (3.3°-4.4°C) Note: Case temperatures will vary if the air curtain is disrupted.
- Digital thermometer
- Clear coil on demand defrost
- Coated evaporator coil

Shelving

- Four tiers of adjustable black metal shelves with black price tag molding.
- Shelves can be flat or slanted down at 10°.

Lighting

- 3500K LED top light

Agency Approvals

- UL, C-UL and UL Sanitation listed to NSF-7, Type I conditions.
- DOE 2017 compliant



WARRANTY*
One year Parts and Labor
2nd thru 5th year part only
service compressor
(U.S.A. and Canada)

Note: Information is subject to change at any time. Visit www.federalind.com for the most current specs.

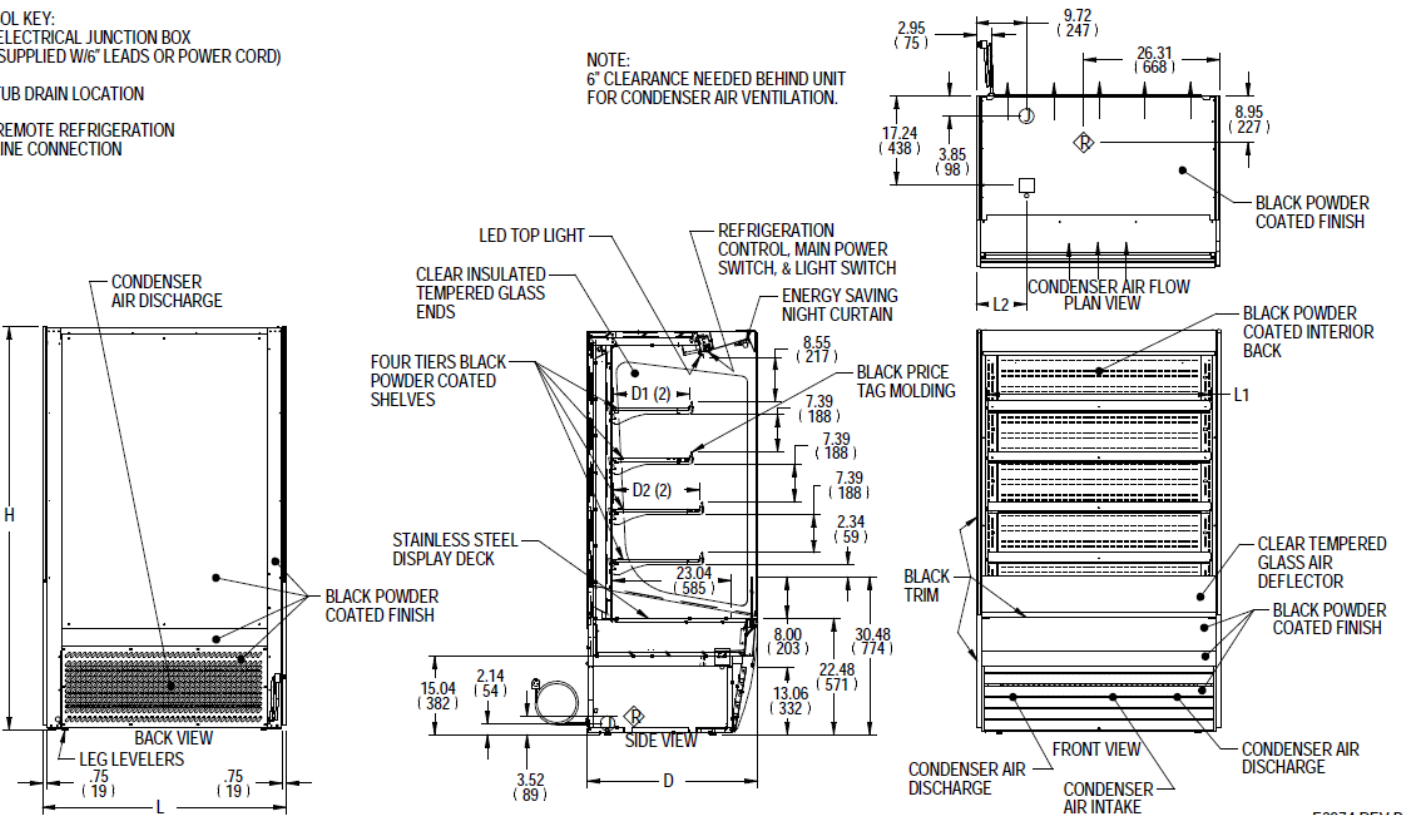
AIA #	VISION SERIES - Square End Self-Serve Refrigerated Case - 78"
SIS #	
Product Specifications	

Intended Environment: Type I - Designed to operate in maximum ambient conditions of 75°F (24°C) and 55% relative humidity.		
Zone	Intended Product To Be Displayed	Avg Prod Temp °F/°C
All	Packaged Refrigerated Products	38°F / (3.3°C)

DIMENSION: xx"/(mm)
 DIMENSION TOLERANCE +/- 0.25 (6.4)

SYMBOL KEY:

- SYMBOL KEY:
- ELECTRICAL JUNCTION BOX (SUPPLIED W/6' LEADS OR POWER CORD)
 - TUB DRAIN LOCATION
 - REMOTE REFRIGERATION LINE CONNECTION



E3974 REV B

MODEL	DIMENSIONS				TUB DRAIN	# OF TIERS	SHELVING			INTERIOR VOLUME CU FT	ELECTRICAL	STANDARD CONNECTION CORD & PLUG			REFRIGERANT	CONDENSATE REMOVAL	SHIP WEIGHT	REMOTE			SHIP WEIGH	
	L	D	H	L2			L1	D1	D2			AMPS	MAX FUSE SIZE	NEMA CORD &				PERMANENT CONNECT	REFRIGERANT	BTU'S @ + 20°		CONDENSATE REMOVAL
	in	in	in	in			in	in	in			2 WIRE + GROUND						AMPS	MAX FUSE			
	mm	mm	mm	mm			mm	mm	mm													
VRSS3678S	36	33	78	6.74	4	32.25	14.634	16.634	19.47	120/60/1	16.0	20	NEMA 5-20P	R290	INTEGRATED PAN	740	2.5	15	R449A	6,720	PUMP	695
	914	838	1981	171		819	372	423								336						315
	47.25	33	78	13.49		43.25	14.634	16.634								820						775
VRSS4878S	1200	838	1981	343	4	1099	372	423	25.74	208-240/60/1	11.0	15	NEMA 6-15P	R290	INTEGRATED PAN	372	3.0	15	R449A	9,580	PUMP	351
	59.25	33	78	14.12		55.25	14.634	16.634								1030						985
VRSS6078S	1505	838	1981	359	4	1403	372	423	32.58	208-240/60/1	16.0	20	NEMA 6-20P	R290	INTEGRATED PAN	467	3.5	15	R449A	11,200	PUMP	447
	71.25	33	78	20.12		67.25	14.634	16.634								1080						1040
VRSS7278S	1810	838	1981	511	4	1708	372	423	39.42	208-240/60/1	16.0	20	NEMA 6-20P	R290	INTEGRATED PAN	490	3.5	15	R449A	12,300	PUMP	472

- Due to continuing engineering improvements, specifications are subject to change without notice.
- Case temperature will vary if the air curtain is disrupted.



FEDERAL INDUSTRIES
 A Standex Company
 215 Federal Avenue Belleville, Wisconsin 53508-9201

Phone: 800-356-4206
Fax: 608-424-3234
Email: Geninfo@Federalind.com
Website: Federalind.com