

**FEDERAL INDUSTRIES**

A Standex Company

215 Federal Avenue  
Belleville, Wisconsin 53508-9201**Phone:** 800-356-4206**Fax:** 608-424-3234**Email:** Geninfo@Federalind.com**Website:** Federalind.com

Project Name: \_\_\_\_\_

Item #: \_\_\_\_\_

Model #: \_\_\_\_\_ Qty: \_\_\_\_\_

Approval: \_\_\_\_\_

AIA #

SIS #

**VISION SERIES - Square End Self-Serve Refrigerated Case - 78"**

Designed with impulse sales in mind. Get maximum return from an attention-grabbing merchandiser and increase profits.



Model VRSS4878S  
Shown with Options

MODEL	DIMENSIONS (Includes End Panels)
<input type="checkbox"/> VRSS3678S	36 x 33 x 78 (in) 914 x 838 x 1981 (mm)
<input type="checkbox"/> VRSS4878S	47.25 x 33 x 78 (in) 1200 x 838 x 1981 (mm)
<input type="checkbox"/> VRSS6078S	59.25 x 33 x 78 (in) 1505 x 838 x 1981 (mm)
<input type="checkbox"/> VRSS7278S	71.25 x 33 x 78 (in) 1810 x 838 x 1981 (mm)

**STANDARD FEATURES****Model Features**

- Black interior including shelves
- Stainless steel display deck
- Tempered glass ends
- Black powder coated base frame
- Moisture resistant end panel construction
- Choice of standard colors on lower millwork panel
- Black trim
- Adjustable leg levelers
- Cord & 90 degree plug, self-contained only
- Front air intake / front discharge
- Energy saving night curtain
- Matches profile of the VRSS & VHSS models

**Refrigeration**

- R290 Refrigerant
- Electronic temperature control maintains 38°-40°F (3.3°-4.4°C) Note: Case temperatures will vary if the air curtain is disrupted.
- Digital thermometer
- Clear coil on demand defrost
- Coated evaporator coil

**Shelving**

- Four tiers of adjustable black metal shelves with black price tag molding.
- Shelves can be flat or slanted down at 10°.

**Lighting**

- 3500K LED top light

**Agency Approvals**

- UL, C-UL and UL Sanitation listed to NSF-7, Type I conditions.
- DOE 2017 compliant

**OPTIONAL ACCESSORIES**

- |   |  |
|---|--|
| <input type="checkbox"/> White interior (including shelves)   | <input type="checkbox"/> Graphics package  |
| <input type="checkbox"/> Stainless steel interior (including shelves)   | <input type="checkbox"/> Solid end panels (mirrored interior)  |
| <input type="checkbox"/> Stainless steel or glass shelves in lieu of black  | <input type="checkbox"/> Reflective end glass  |
| <input type="checkbox"/> Deli meat pegs   | <input type="checkbox"/> Clear or reflective glass, sliding rear doors (Solid hinged on 36" cases)                               |
| <input type="checkbox"/> 3500K LED lights below shelves   | <input type="checkbox"/> 6" legs (152mm)   |
| <input type="checkbox"/> Additional lighted 3500K LED shelf   | <input type="checkbox"/> Seismic legs  |
| <input type="checkbox"/> High output condo pan - self-contained units only  | <input type="checkbox"/> Skirt w/4" casters or legs  |
| <input type="checkbox"/> Condensate evaporator assembly (field install) (separate 120V, 20A circuit required) (remote only) | <input type="checkbox"/> 2 1/2" (63.5mm) recessed or 4" (101.6mm) casters (self-contained models only) (Weight limits may apply) |
| <input type="checkbox"/> Remote refrigeration with condensate pump (EEV included)   | <input type="checkbox"/> Joining kit for continuous line-ups (not available with casters)  |
| <input type="checkbox"/> Self-cleaning condenser  | <input type="checkbox"/> Front wire display basket   |
| <input type="checkbox"/> Rear air intake / rear discharge   | <input type="checkbox"/> Front cart bumper   |
| <input type="checkbox"/> Stainless steel exterior finish  | <input type="checkbox"/> Roll-Down locking security cover (black, white, or gray) Stand alone models only                        |
| <input type="checkbox"/> Premium exterior laminate  | <input type="checkbox"/> Black polycarbonate removable locking security cover  |

\*Additional options available on the website and price list.



**WARRANTY\***  
One year Parts and Labor  
2nd thru 5th year part only  
service compressor  
(U.S.A. and Canada)

**Note: Information is subject to change at any time. Visit [www.federalind.com](http://www.federalind.com) for the most current specs.**

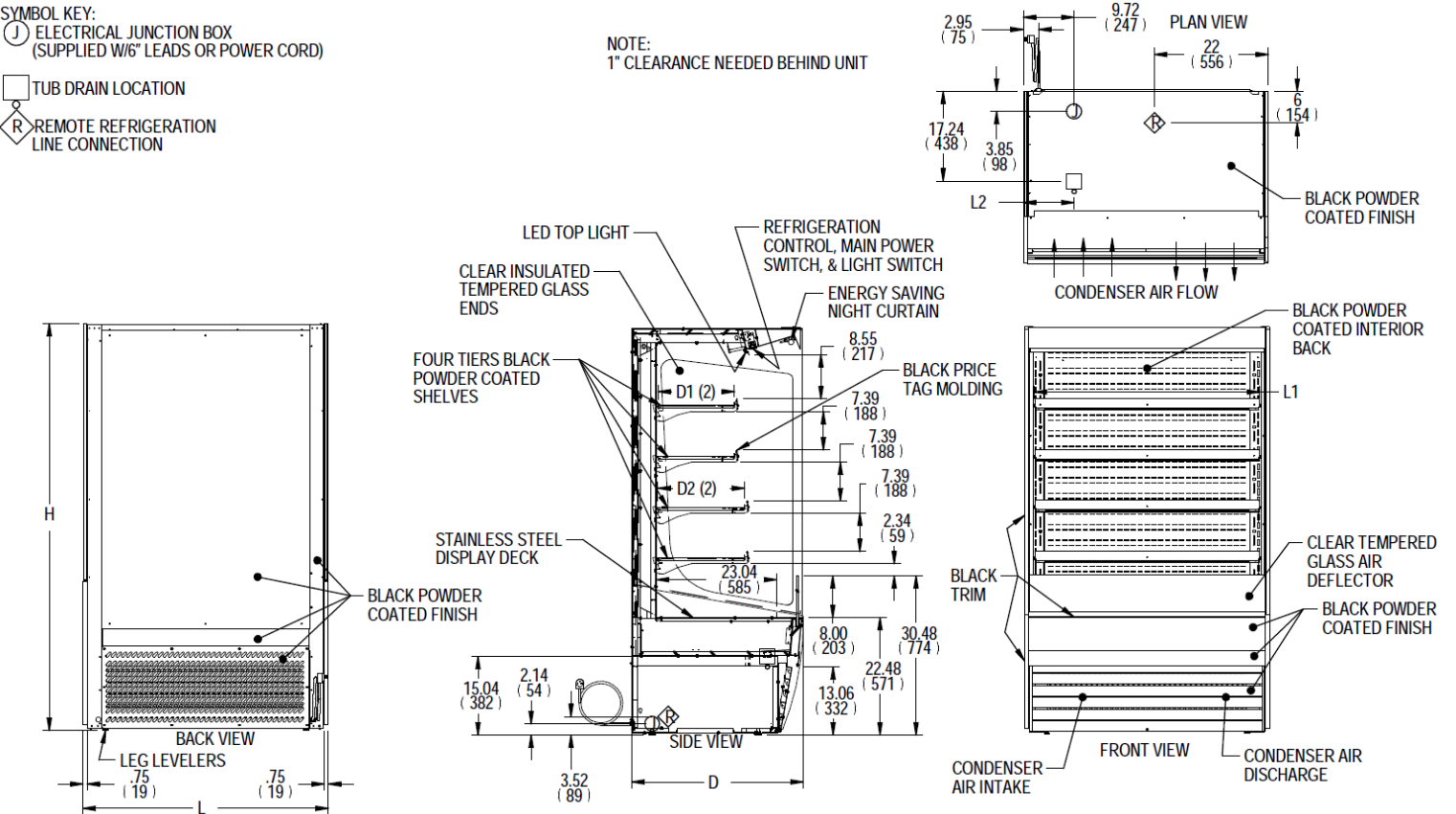
AIA #	<h1>VISION SERIES - Square End Self-Serve Refrigerated Case - 78"</h1> <h2>Product Specifications</h2>
SIS #	

Intended Environment: Type I - Designed to operate in maximum ambient conditions of 75°F (24°C) and 55% relative humidity.		
Zone	Intended Product To Be Displayed	Avg Prod Temp °F/°C
All	Packaged Refrigerated Products	38°F / (3.3°C)

DIMENSION: xx"/(mm)  
 DIMENSION TOLERANCE +/- 0.25 (6.4)

SYMBOL KEY:

- SYMBOL KEY:
- ELECTRICAL JUNCTION BOX (SUPPLIED W/6" LEADS OR POWER CORD)
  - TUB DRAIN LOCATION
  - REMOTE REFRIGERATION LINE CONNECTION



E3974 REV B

MODEL	DIMENSIONS			TUB DRAIN	SHELVING			INTERIOR VOLUME CU FT	ELECTRICAL	SELF CONTAINED					REMOTE							
	L	D	H	L2	# OF TIERS	L1	D1			D2	STANDARD CONNECTION CORD & PLUG			REFRIGERANT	CONDENSAT E REMOVAL	SHIP WEIGHT	PERMANENT CONNECT		REFRIGERANT	BTU'S @ + 20°	CONDENSATE REMOVAL	SHIP WEIGHT
	in	in	in	in		in	in			in	AMPS	MAX FUSE SIZE	NEMA CORD & PLUG		CONDENSAT E REMOVAL	LBS KILO	AMPS	MAX FUSE SIZE		CONDENSATE REMOVAL	LBS KILO	
	mm	mm	mm	mm		mm	mm			mm												
	mm	mm	mm	mm		mm	mm			mm												
VRSS3678S	36	33	78	6.74	4	32.25	14.634	16.634	19.47	120/60/1	16.0	20	NEMA 5-20P	R290	INTEGRATED PAN	740	-	-	-	-	-	-
	914	838	1981	171		819	372	423							336							
VRSS4878S	47.25	33	78	13.49	4	43.25	14.634	16.634	25.74	208- 240/60/1	11.0	15	NEMA 6-15P	R290	INTEGRATED PAN	820	3.0	15	R454C	9,580	PUMP	775
	1200	838	1981	343		1099	372	423							372							
VRSS6078S	59.25	33	78	14.12	4	55.25	14.634	16.634	32.58	208- 240/60/1	16.0	20	NEMA 6-20P	R290	INTEGRATED PAN	1030	3.5	15	R454C	11,200	PUMP	985
	1505	838	1981	359		1403	372	423							467							
VRSS7278S	71.25	33	78	20.12	4	67.25	14.634	16.634	39.42	208- 240/60/1	16.0	20	NEMA 6-20P	R290	INTEGRATED PAN	1080	3.5	15	R454C	12,300	PUMP	1040
	1810	838	1981	511		1708	372	423							490							

- Due to continuing engineering improvements, specifications are subject to change without notice.
- Case temperature will vary if the air curtain is disrupted.



**FEDERAL INDUSTRIES**  
 A Standex Company  
 215 Federal Avenue Belleville, Wisconsin 53508-9201

**Phone:** 800-356-4206  
**Fax:** 608-424-3234  
**Email:** [Geninfo@Federalind.com](mailto:Geninfo@Federalind.com)  
**Website:** [Federalind.com](http://Federalind.com)