



The Signature of Quality

FEDERAL INDUSTRIES

A Standex Company

215 Federal Avenue
Belleville, Wisconsin 53508-9201

Phone: 800-356-4206

Fax: 608-424-3234

Email: Geninfo@Federalind.com

Website: Federalind.com

Project Name: \_\_\_\_\_

Item #: \_\_\_\_\_

Model #: \_\_\_\_\_ Qty: \_\_\_\_\_

Approval: \_\_\_\_\_

AIA #

SIS #

VISION SERIES - Square End Self-Serve Refrigerated Case - 78"

Designed with impulse sales in mind. Get maximum return from an attention-grabbing merchandiser and increase profits.



Model VRSS4878S
Shown with Options

OPTIONAL ACCESSORIES

- White interior (including shelves)
Stainless steel interior (including shelves)
Stainless steel or glass shelves in lieu of black
Deli meat pegs
3500K LED lights below shelves
Additional lighted 3500K LED shelf
High output condo pan - self-contained units only
Condensate evaporator assembly (field install)
Remote refrigeration with condensate pump (EEV included)
Self-cleaning condenser
Rear air intake / rear discharge
Stainless steel exterior finish
Premium exterior laminate
Graphics package
Solid end panels (mirrored interior)
Reflective end glass
Clear or reflective glass, sliding rear doors
6" legs (152mm)
Seismic legs
Skirt w/4" casters or legs
2 1/2" (63.5mm) recessed or 4" (101.6mm) casters
Joining kit for continuous line-ups
Front wire display basket
Front cart bumper
Roll-Down locking security cover
Black polycarbonate removable locking security cover

\*Additional options available on the website and price list.

Table with 2 columns: MODEL and DIMENSIONS. Lists models VRSS3678S, VRSS4878S, VRSS6078S, and VRSS7278S with their respective dimensions.

STANDARD FEATURES

Model Features

- Black interior including shelves
Stainless steel display deck
Tempered glass ends
Black powder coated base frame
Moisture resistant end panel construction
Choice of standard colors on lower millwork panel
Black trim
Adjustable leg levelers
Cord & 90 degree plug, self-contained only
Front air intake / front discharge
Energy saving night curtain
Matches profile of the VRSS & VHSS models

Refrigeration

- R290 Refrigerant
Electronic temperature control maintains 38°-40°F
Digital thermometer
Clear coil on demand defrost
Coated evaporator coil

Shelving

- Four tiers of adjustable black metal shelves with black price tag molding.
Shelves can be flat or slanted down at 10°.

Lighting

- 3500K LED top light

Agency Approvals

- UL, C-UL and UL Sanitation listed to NSF-7, Type I conditions.
DOE 2017 compliant



WARRANTY\* One year Parts and Labor 2nd thru 5th year part only service compressor (U.S.A. and Canada)

Note: Information is subject to change at any time. Visit www.federalind.com for the most current specs.

|       |   |
|-------|---|
| AIA # | VISION SERIES - Square End Self-Serve Refrigerated Case - 78" |
| SIS # | Product Specifications  |

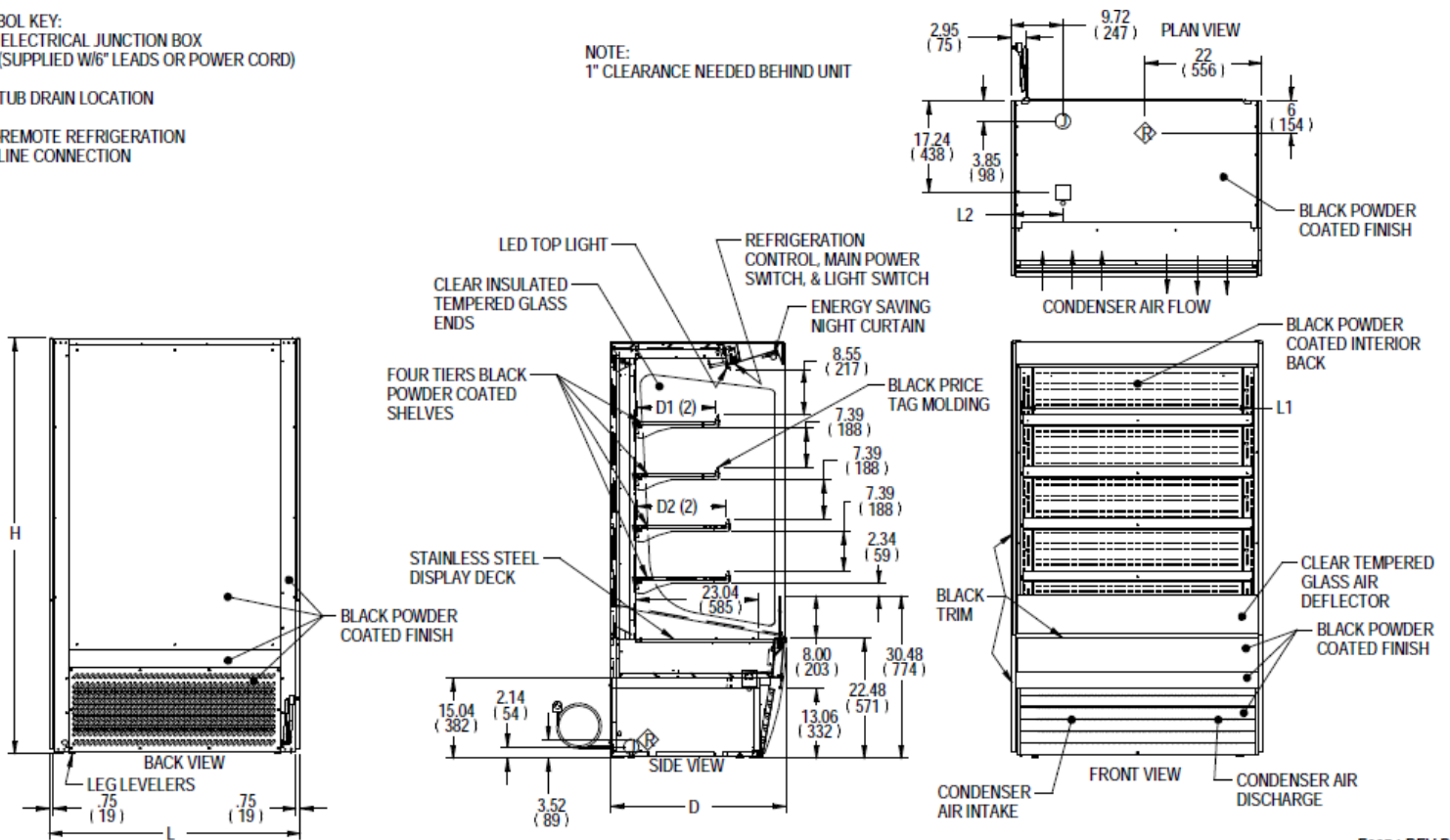
|  |                                  |                     |
|--|----------------------------------|---------------------|
| Intended Environment: Type I - Designed to operate in maximum ambient conditions of 75°F (24°C) and 55% relative humidity. |                                  |                     |
| Zone   | Intended Product To Be Displayed | Avg Prod Temp °F/°C |
| All  | Packaged Refrigerated Products   | 38°F / (3.3°C)      |

**DIMENSION: xx"/(mm)**  
**DIMENSION TOLERANCE +/- 0.25 (6.4)**

SYMBOL KEY:

- SYMBOL KEY:
- ① ELECTRICAL JUNCTION BOX (SUPPLIED W/6' LEADS OR POWER CORD)
  - TUB DRAIN LOCATION
  - Ⓡ REMOTE REFRIGERATION LINE CONNECTION

NOTE:  
1" CLEARANCE NEEDED BEHIND UNIT



E3974 REV B

| MODEL     | DIMENSIONS |     |      |       | TUB DRAIN | SHELVING   |        |        | INTERIOR VOLUME CU FT | ELECTRICAL   | SELF CONTAINED |             |             | REMOTE              |                |                   |               |             |               |                    |             |                  |               |               |      |
|-----------|------------|-----|------|-------|-----------|------------|--------|--------|-----------------------|--------------|----------------|-------------|-------------|---------------------|----------------|-------------------|---------------|-------------|---------------|--------------------|-------------|------------------|---------------|---------------|------|
|           | L          | D   | H    | L2    |           | # OF TIERS | L1     | D1     |                       |              | D2             | CORD & PLUG | REFRIGERANT | CONDENSAT E REMOVAL | SHIP WEIGHT    | PERMANENT CONNECT |               | REFRIGERANT | BTU'S @ + 20° | CONDENSATE REMOVAL | SHIP WEIGHT |                  |               |               |      |
|           | in         | in  | in   | in    |           |            | in     | in     |                       |              | in             |             |             |                     |                | AMPS              | MAX FUSE SIZE |             |               |                    |             | AMPS             | MAX FUSE SIZE | LBS           | KILO |
|           | mm         | mm  | mm   | mm    |           |            | mm     | mm     |                       |              | mm             |             |             |                     |                | 2 WIRE + GROUND   | MAX FUSE SIZE |             |               |                    |             | NEMA CORD & PLUG | AMPS          | MAX FUSE SIZE | LBS  |
| VRSS3678S | 36         | 33  | 78   | 6.74  | 4         | 32.25      | 14.634 | 16.634 | 19.47                 | 120/60/1     | 16.0           | 20          | NEMA 5-20P  | R290                | INTEGRATED PAN | 740               | -             | -           | -             | -                  | -           |                  |               |               |      |
| VRSS4878S | 47.25      | 33  | 78   | 13.49 | 4         | 43.25      | 14.634 | 16.634 | 25.74                 | 208-240/60/1 | 11.0           | 15          | NEMA 6-15P  | R290                | INTEGRATED PAN | 820               | 3.0           | 15          | R454C         | 9,580              | PUMP        | 775              |               |               |      |
| VRSS6078S | 59.25      | 33  | 78   | 14.12 | 4         | 55.25      | 14.634 | 16.634 | 32.58                 | 208-240/60/1 | 16.0           | 20          | NEMA 6-20P  | R290                | INTEGRATED PAN | 1030              | 3.5           | 15          | R454C         | 11,200             | PUMP        | 985              |               |               |      |
| VRSS7278S | 71.25      | 33  | 78   | 20.12 | 4         | 67.25      | 14.634 | 16.634 | 39.42                 | 208-240/60/1 | 16.0           | 20          | NEMA 6-20P  | R290                | INTEGRATED PAN | 1080              | 3.5           | 15          | R454C         | 12,300             | PUMP        | 1040             |               |               |      |
|           | 1810       | 838 | 1981 | 511   |           | 1708       | 372    | 423    |                       |              |                |             |             |                     |                | 490               |               |             |               |                    |             | 472              |               |               |      |

- Due to continuing engineering improvements, specifications are subject to change without notice.
- Case temperature will vary if the air curtain is disrupted.



**FEDERAL INDUSTRIES**  
 A Standex Company  
 215 Federal Avenue Belleville, Wisconsin 53508-9201

**Phone:** 800-356-4206  
**Fax:** 608-424-3234  
**Email:** Geninfo@Federalind.com  
**Website:** Federalind.com